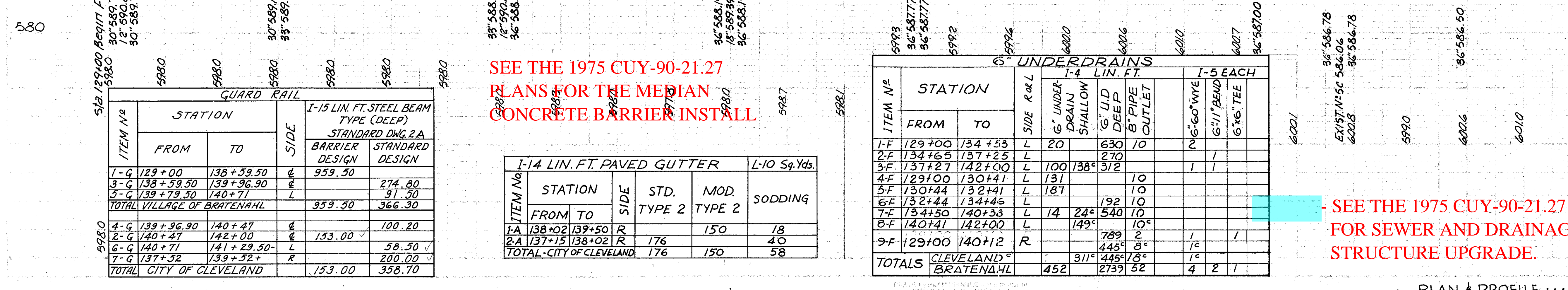
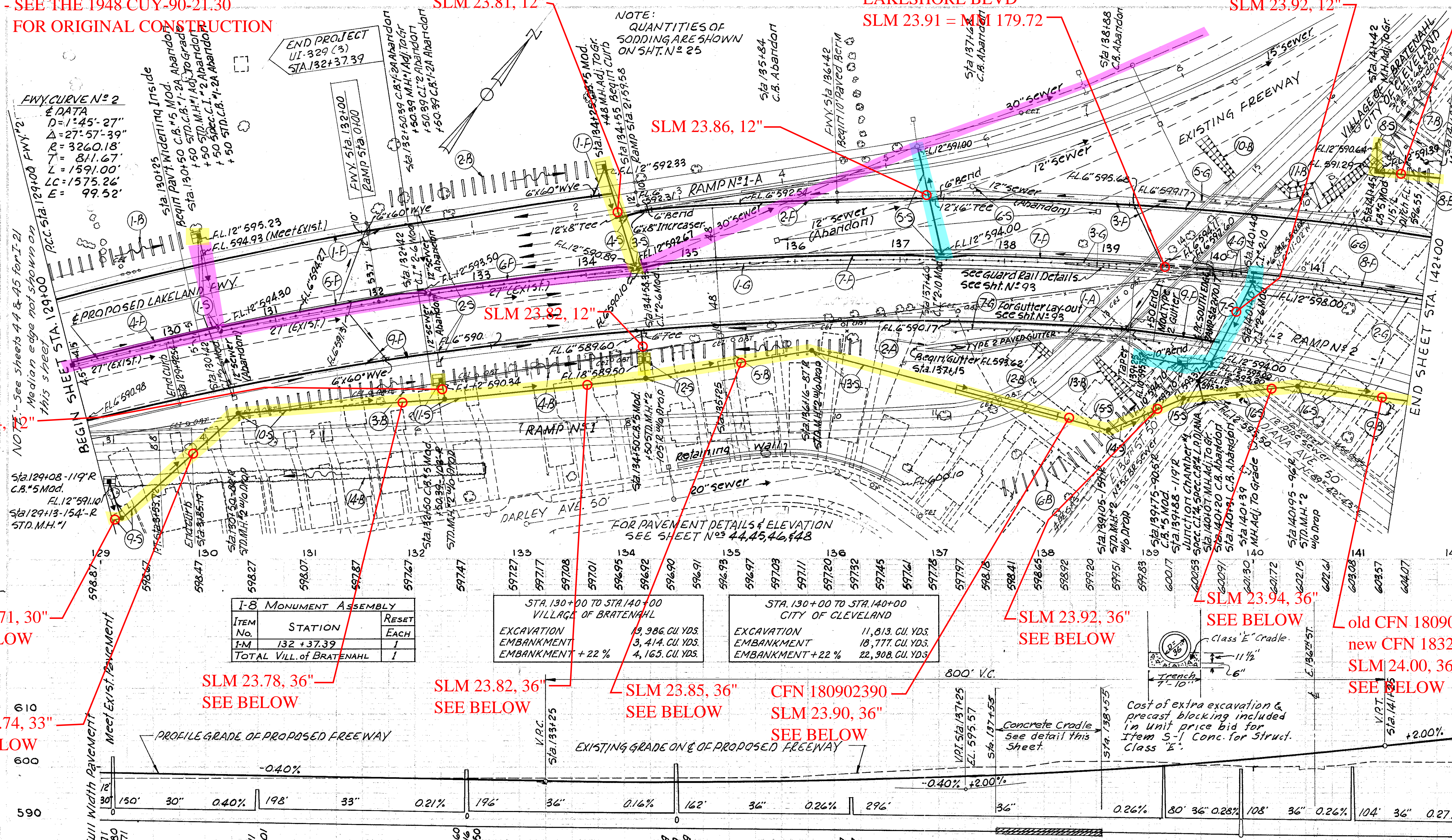


- SEE THE 1948 CUY-90-21.30 FOR ORIGINAL CONSTRUCTION



I-8 MONUMENT ASSEMBLY

ITEM No	STATION	RESET EACH
I-8	132 + 37.39	1
TOTAL VILL. OF BRATENAHL		1

STA. 130+00 TO STA. 140+00 VILLAGE OF BRATENAHL

EXCAVATION	19,986 CU. YDS.
EMBANKMENT	3,414 CU. YDS.
EMBANKMENT + 22 %	4,165 CU. YDS.

STA. 130+00 TO STA. 140+00 CITY OF CLEVELAND

EXCAVATION	11,813 CU. YDS.
EMBANKMENT	18,777 CU. YDS.
EMBANKMENT + 22 %	22,908 CU. YDS.

SEE THE 1975 CUY-90-21.27 PLANS FOR THE MEDIAN CONCRETE BARRIER INSTALL

I-14 LIN. FT. PAVED GUTTER

ITEM No	STATION	SIDE	STD. TYPE 2	MOD. TYPE 2	SODDING
I-14	138+02	R	176	150	18
2-A	137+15	R	176	150	40
TOTAL - CITY OF CLEVELAND			176	150	58

6" UNDERDRAINS

ITEM N ^o	STATION		SIDE	1-4 LIN. FT.				I-5 EACH		
	FROM	TO		UNDER DRAIN SHALLOW	G.U.D DEEP	8" PIPE OUTLET	6" WYE	6" BEND	6" TEE	
1-F	129+00	134+53	L	20	630	10				
2-F	134+65	137+25	L	80	270					
3-F	137+27	142+00	L	100	312					
4-F	129+00	130+41	L	131	10					
5-F	130+44	132+41	L	187	10					
6-E	132+44	134+46	L		192	10				
7-F	134+50	140+38	L	14	24	540	10			
8-F	140+41	142+00	L		149		10			
9-F	129+00	140+12	R		789	2		1		
TOTALS					311	4485	18	1	1	
					452	2739	52	4	2	

SEE THE 1975 CUY-90-21.27 FOR SEWER AND DRAINAGE STRUCTURE UPGRADE.

STORM SEWERS

ITEM N ^o	STATION	FROM	TO	SIDE	L ^o R	DIA.	GRADE	SLOPE	CONCRETE		JUNCTION	ABANDONED	UND. PAVT.	LOCATION OF STRUCTURE
									CL	CR				
1-5	130+42	130+50	131	R	15	5	0.40%	1.00%	CL	CL				130+42.50
2-5	131+42	132+00	131	R	15	5	0.40%	1.00%	CL	CL				131+42.50
3-5	132+00	133+00	132	R	15	5	0.40%	1.00%	CL	CL				132+00.50
4-5	133+00	134+00	133	R	15	5	0.40%	1.00%	CL	CL				133+00.50
5-5	134+00	135+00	134	R	15	5	0.40%	1.00%	CL	CL				134+00.50
6-5	135+00	136+00	135	R	15	5	0.40%	1.00%	CL	CL				135+00.50
7-5	136+00	137+00	136	R	15	5	0.40%	1.00%	CL	CL				136+00.50
8-5	137+00	138+00	137	R	15	5	0.40%	1.00%	CL	CL				137+00.50
9-5	138+00	139+00	138	R	15	5	0.40%	1.00%	CL	CL				138+00.50
10-5	139+00	140+00	139	R	15	5	0.40%	1.00%	CL	CL				139+00.50
11-5	140+00	141+00	140	R	15	5	0.40%	1.00%	CL	CL				140+00.50
12-5	141+00	142+00	141	R	15	5	0.40%	1.00%	CL	CL				141+00.50
13-5	142+00	143+00	142	R	15	5	0.40%	1.00%	CL	CL				142+00.50
14-5	143+00	144+00	143	R	15	5	0.40%	1.00%	CL	CL				143+00.50
15-5	144+00	145+00	144	R	15	5	0.40%	1.00%	CL	CL				144+00.50
TOTALS														