

SLM 25.71, 21"
SEE BELOW

SLM 25.76, 24"
SEE BELOW

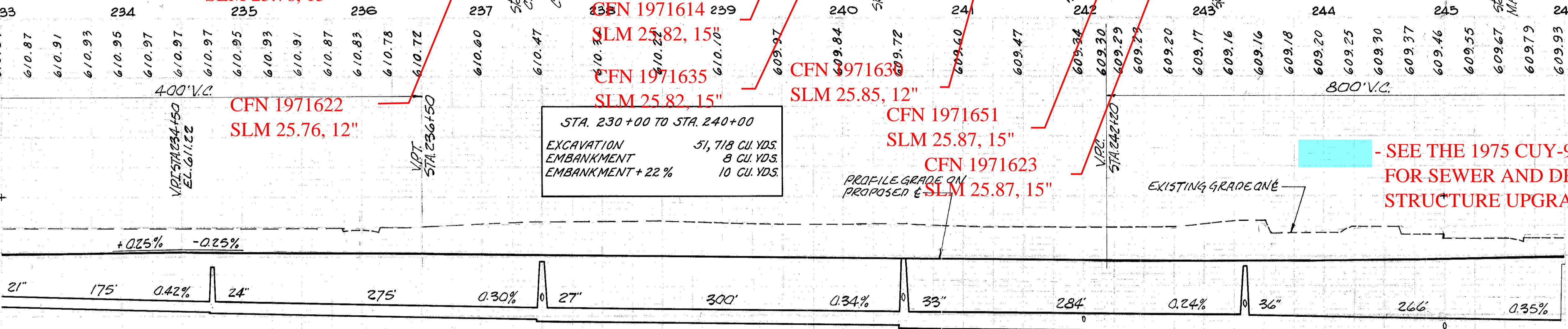
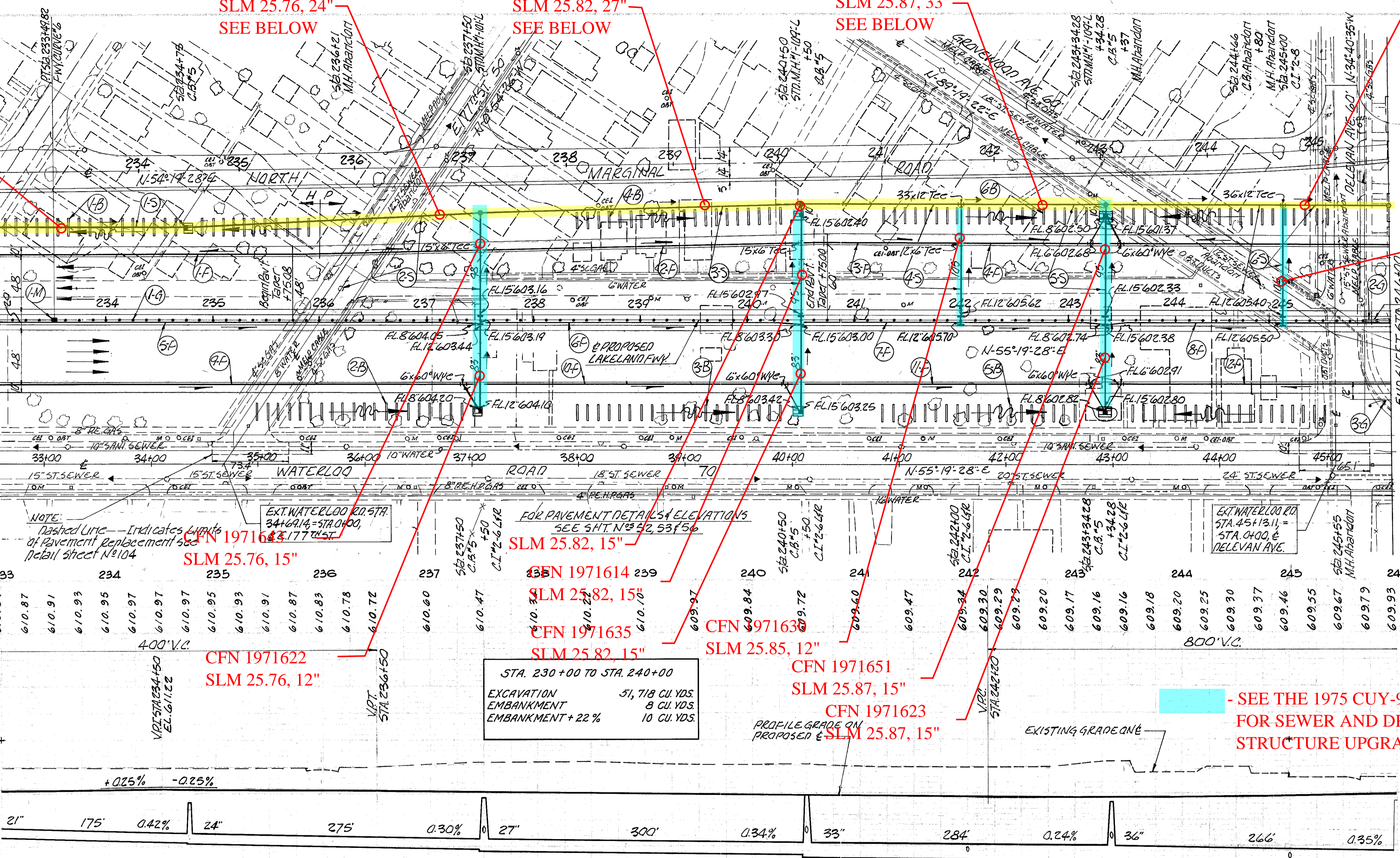
SLM 25.82, 27"
SEE BELOW

SLM 25.87, 33"
SEE BELOW

SLM 25.92, 36"
SEE BELOW

CFN 1971644
SLM 25.91, 12"
SEE GUARD RAIL DETAILS
SHT. N°104

FWY CURVE #6
E DATA
D=1°20'00"
L=983.83'
LC=981.69'
E=28.31'



ITEM No.	STATION		SIDE R OR L	I-15 LIN.FT.	
	FROM	TO		STEEL BEAM TYPE (DEEP) STD. DWG. N° 2A	STANDARD DESIGN
1-G	233+00	245+75.4	E	1275.40	
2-G	245+75.4	246+00	E		49.2
3-G	245+81.4	246+00	R		18.6
TOTAL				1275.40	67.8

ITEM No.	STATION		SIDE R OR L	GLID DEEP	STAIRS	OUTLET	6x60 WYE
	FROM	TO					
1-F	233+00	237+50	L	449			
2-F	237+50	240+50	L	298			
3-F	240+50	243+34	L	300	10		1
4-F	243+34	246+00	L	284	10		1
5-F	233+00	237+50	R	436	10		
6-F	237+50	240+50	R	286	10		
7-F	240+50	243+34	R	270	10		
8-F	243+34	246+00	R	253	10		
9-F	233+00	237+50	R	463	10		
10-F	237+50	240+50	R	315	10		
11-F	240+50	243+34	R	300	10		
12-F	243+34	246+00	R	282	10		
TOTAL				3936	100		6

ITEM No.	STATION		SIDE R OR L	LENGTH x WIDTH	SODDING
	FROM	TO			
1-B	233+05	235+90	L	16x1.5	75
2-B	235+43	237+33	R	16x1.5	53
3-B	238+43	240+33	R	16x1.5	53
4-B	238+43	240+33	L	16x1.5	53
5-B	241+27	243+41	L	16x1.5	106
6-B	241+27	243+41	R	16x1.5	106
TOTAL					446

ITEM No.	STATION	SIDE R OR L	I-8 MONUMENT ASSEMBLY	
			TYPE B	EACH
1-M	233+49.82	E	1	1
TOTAL THIS SHEET				1

STATION	FROM	TO	I-8 EACH		I-15 EACH		TOTAL THIS SHEET
			CL. CB. U. MH. C.B. 2-8 5	CL. CB. U. MH. C.B. 2-8 5	CL. CB. U. MH. C.B. 2-8 5	CL. CB. U. MH. C.B. 2-8 5	
233+00	234+75	235+00	1	1	1	1	1
235+00	236+00	236+00	1	1	1	1	1
236+00	237+00	237+00	1	1	1	1	1
237+00	238+00	238+00	1	1	1	1	1
238+00	239+00	239+00	1	1	1	1	1
239+00	240+00	240+00	1	1	1	1	1
240+00	241+00	241+00	1	1	1	1	1
241+00	242+00	242+00	1	1	1	1	1
242+00	243+00	243+00	1	1	1	1	1
243+00	244+00	244+00	1	1	1	1	1
244+00	245+00	245+00	1	1	1	1	1
245+00	246+00	246+00	1	1	1	1	1
TOTAL THIS SHEET				38	38	38	38

- SEE THE 1975 CUY-90-21.27 FOR SEWER AND DRAINAGE STRUCTURE UPGRADE.

SEE THE 1975 CUY-90-21.27 PLANS FOR THE MEDIAN CONCRETE BARRIER INSTALL