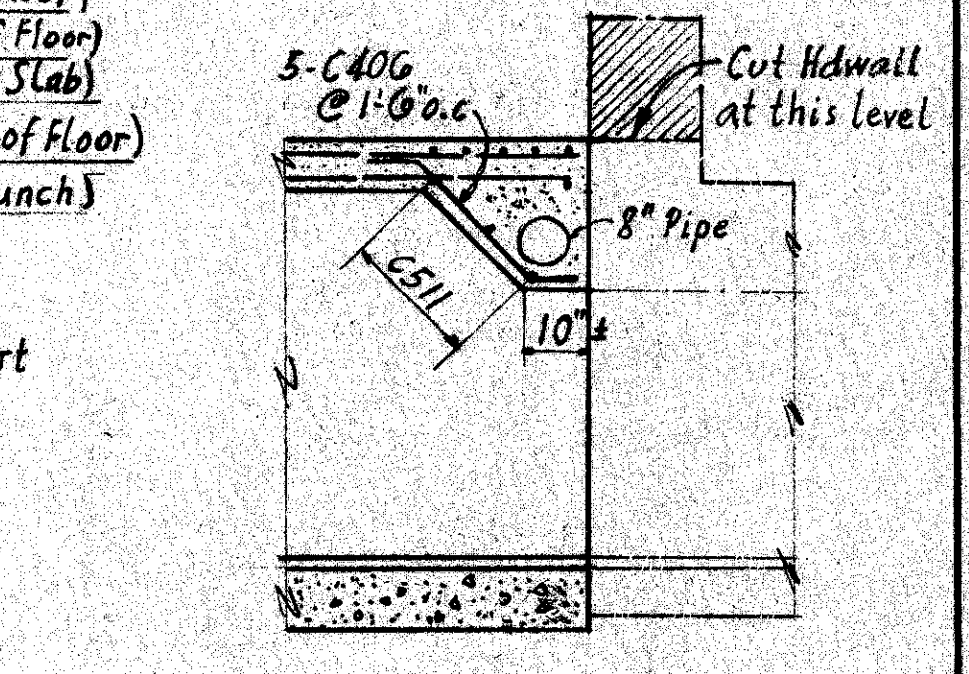
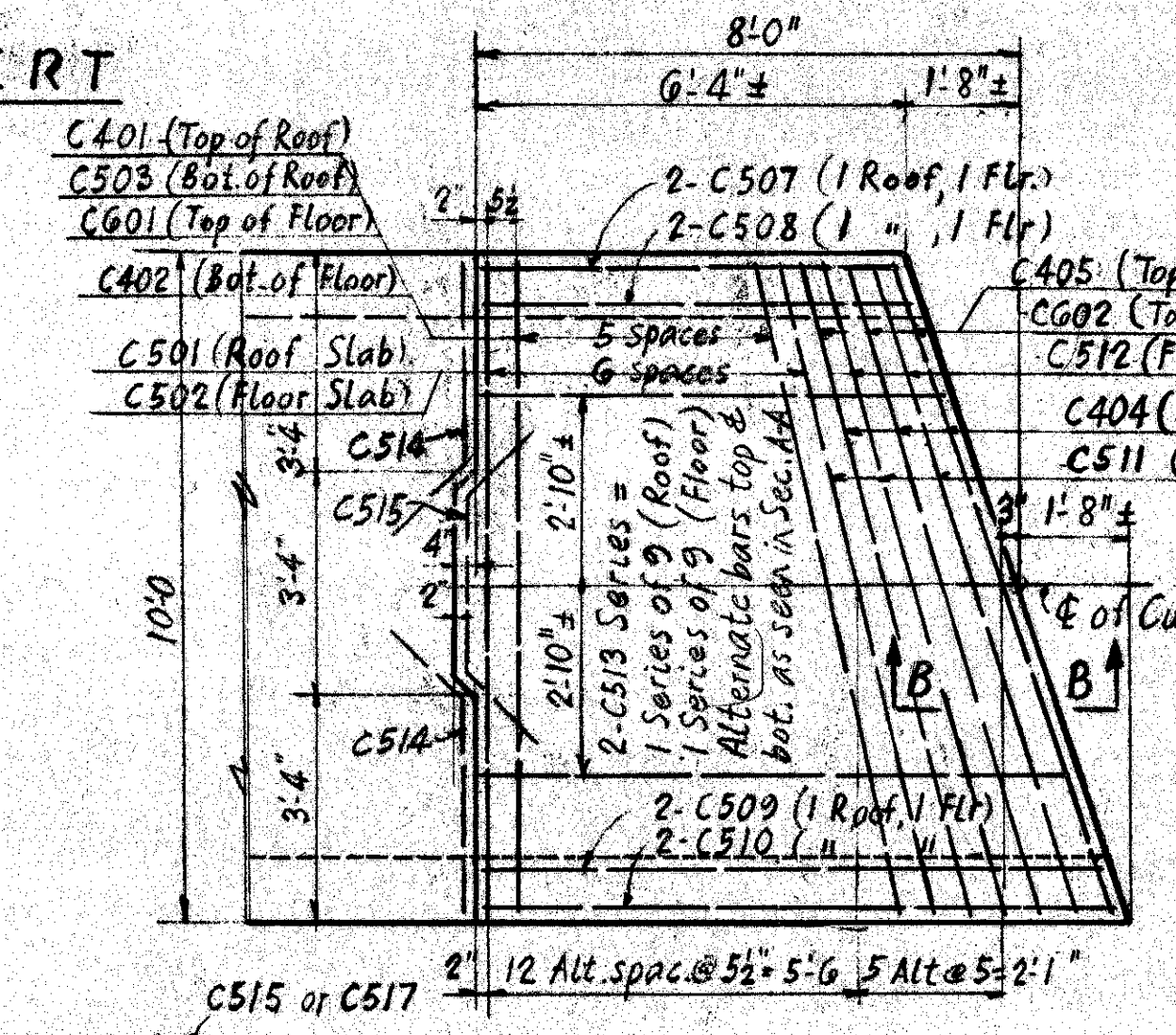
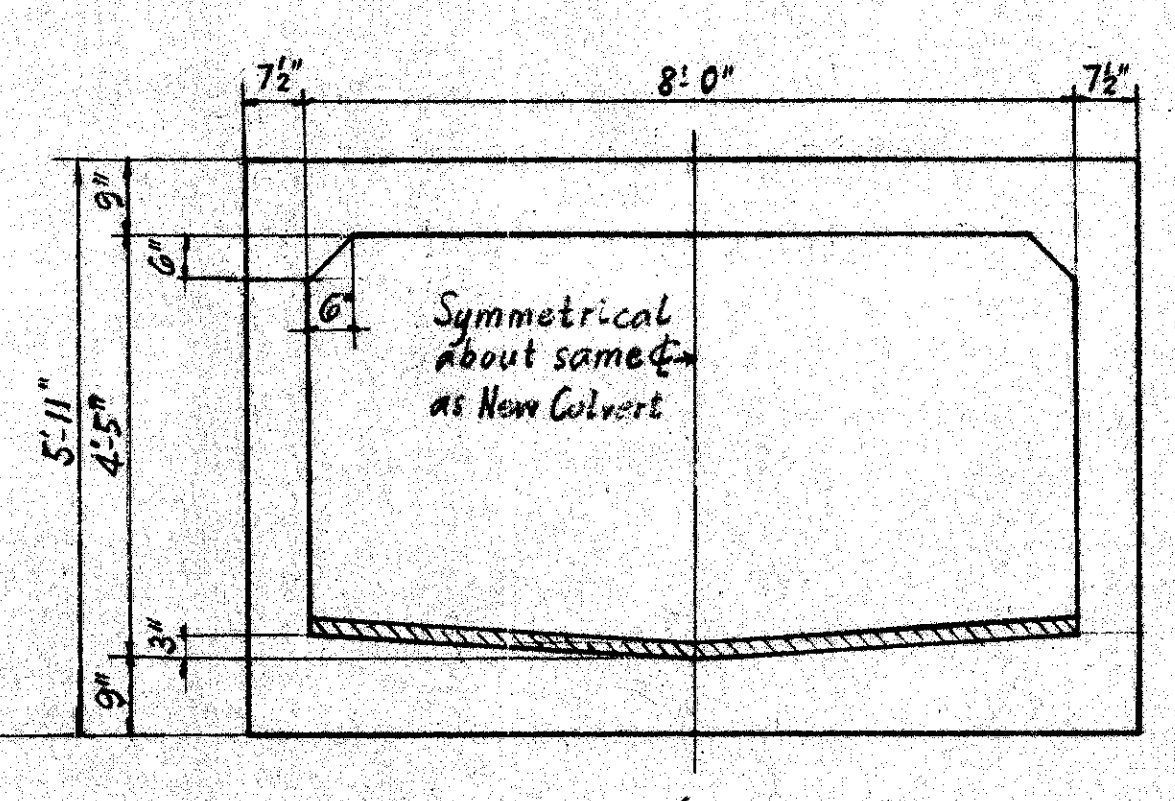
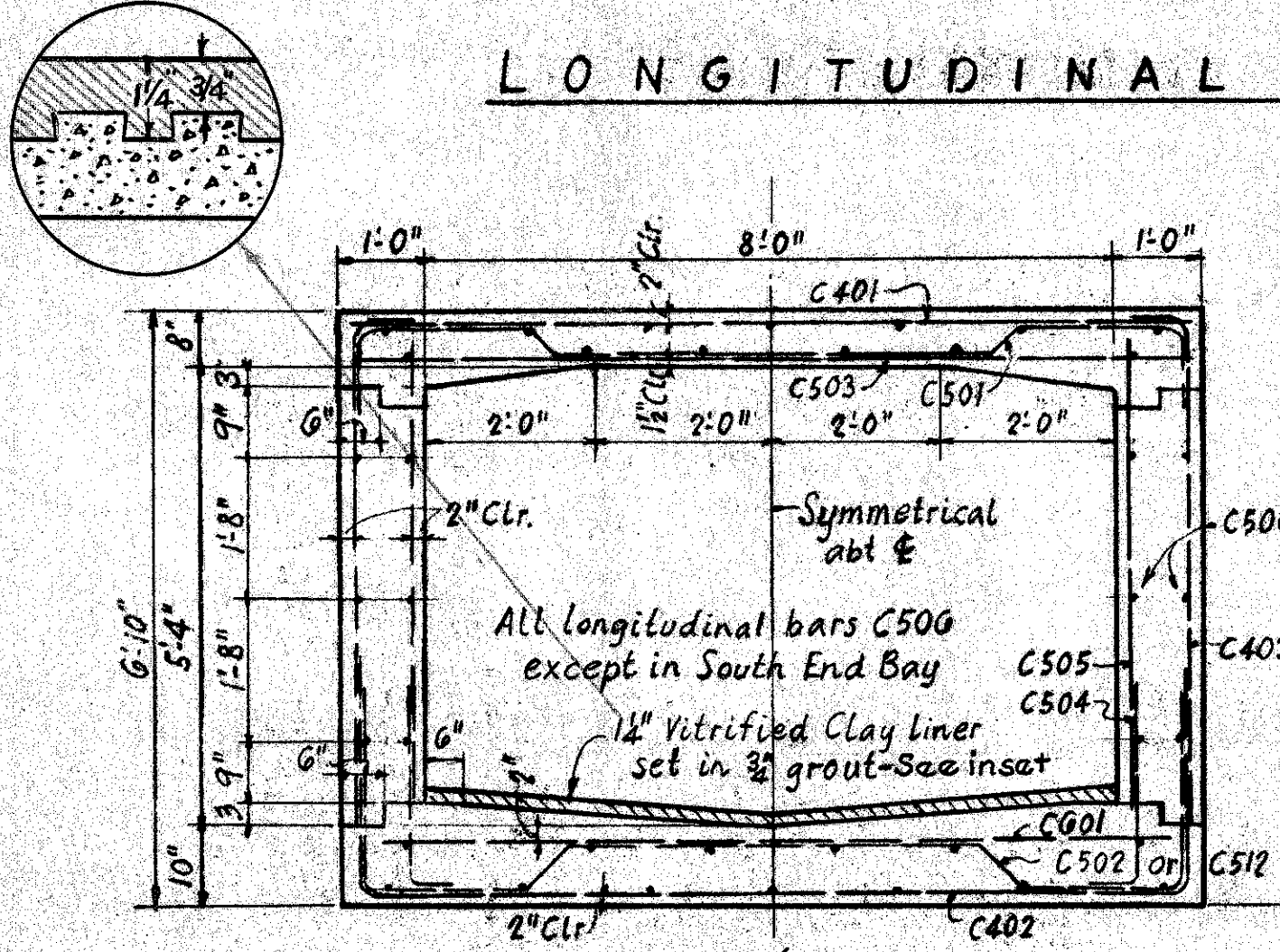


old CFN 180902527
new CFN 1882627
SLM 25.27, 96"x5'-4"
CONCRETE BOX
SEE SHEET 28

LONGITUDINAL SECTION ON ϕ OF CULVERT

REINFORCING STEEL LIST				
MARK	NO.	LENGTH	WEIGHT	SHP.
CG01	294	9'-6"	4195	S
CG02	3	9'-11"	45	S
C501	304	11'-5"	3619	B
C502	304	14'-9"	4676	B
C503	294	9'-6"	2913	S
C504	243	3'-9"	950	B
C505	243	5'-6"	1394	S
C506	342	29'-8"	10582	S
C507	5	6'-2"	32	S
C508	5	6'-5"	33	S
C509	5	9'-0"	47	S
C510	5	9'-3"	48	S
C511	3	9'-9"	30	S
C512	2	15'-0"	31	B
C513	2 SEAMS OF 9 LACH	6'-9"	146	S
C514	72	4'-7"	344	B
C515	36	5'-6"	207	B
C516	72	3'-6"	263	B
C517	36	4'-6"	169	B
C401	294	9'-8"	1899	S
C402	294	14'-5"	2830	B
C403	1205	7'-1"	5701	B
C404	3	14'-10"	30	B
C405	3	10'-1"	20	S
C406	5	3'-7"	12	B



ESTIMATED QUANTITIES				
ITEM	TOTAL	UNIT	DESCRIPTION	CULVERT
E-2	520	C.Y.	UNCLASSIFIED EXCAVATION	520
S-1	282	CY	CLASS C CONCRETE	282
S-4	40216	LBS.	REINFORCING STEEL	40216
S-24	LUMP	SUM	REMOVAL OF EXISTING STRUCTURE	L.S.
Spec	2230	SQ.FT.	1 1/2" VITRIFIED CLAY TUNNEL LINER & GROUT	2230

NOTES
 CONCRETE shall be Class "C".
 REINFORCING STEEL shall be 2" clear from face of concrete, unless otherwise noted.
 BAR SIZE is indicated in the bar mark. The first digit indicates the bar size number for example: C504 is a #5 size bar.
 REPLACEMENT BARS If Replacement bars are fabricated from stock which has previously been tested and approved by the Ohio Testing Laboratory, test samples as provided in Section S-402 need not be furnished, and replacement will not be required.

MAXIMUM SOIL PRESSURE
= 1500 # PER SQ. FT.

HARGETT, YANDA & BARBER
 Consulting Engineers
 4500 Euclid Ave. Cleveland 8, Ohio

GREEN-CREEK CULVERT
 DETAILS TO REPLACE EXISTING CULVERT
 REINFORCING STEEL LIST & ESTIMATED QUANTITIES
 LAKELAND FREEWAY
 CUYAHOGA COUNTY
 SEC. CUY. 2-24.33 STA. 211+10

DESIGNED	DRAWN	TRACED	CHECKED	REVIEWED	DATE
CEA	CEA	JMP	MP		