

CFN 1971555
SLM XX, 12"
SEE BELOW

CFN 1971562
SLM 27.01, 18"
SEE BELOW

CFN 1971554
SLM 27.00, 18"
SEE BELOW

CFN 1971553
SLM 27.01, 12"
SEE BELOW

CFN 1971535
SLM XX, 15"
SEE BELOW

FED. DIST.	STATE	PROJECT	FISCAL YEAR
2	OHIO	I-329 (13)	27 152

CUYAHOGA COUNTY
CUY. 2-25.96

CFN 1971561
SLM XX, 18"
SEE BELOW

CFN 1971564
SLM XX, 18"
SEE BELOW

CFN 1971537
SLM XX, 18"
SEE BELOW

FWY CURVE NO 1-E
& DATA

D = 0°-44'-43"
A = 5°-57'-44.5"
R = 7687.82'
T = 400.37'
L = 800.00'
L.C. = 799.65'
E = 10.42'

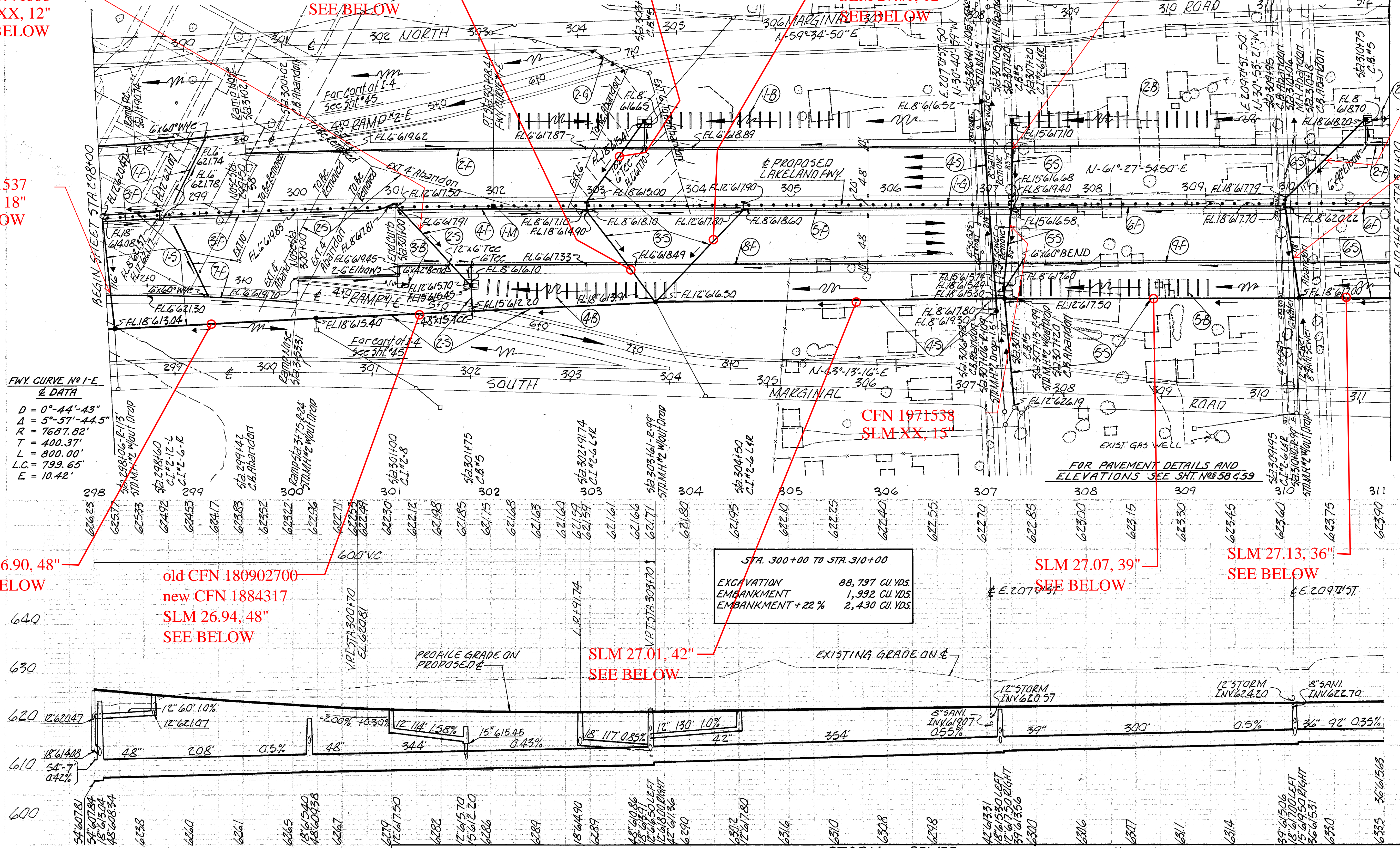
SLM 26.90, 48"
SEE BELOW

old CFN 180902700
new CFN 1884317
SLM 26.94, 48"
SEE BELOW

SLM 27.01, 42"
SEE BELOW

SLM 27.07, 39"
SEE BELOW

SLM 27.13, 36"
SEE BELOW



STA. 300+00 TO STA. 310+00

EXCAVATION	88,797 CU. YDS.
EMBANKMENT	1,992 CU. YDS.
EMBANKMENT + 22%	2,430 CU. YDS.

ITEM	STATION	RAIL		GUARD		TOTAL	
		FROM	TO	FROM	TO		
1-G	298+00	311+00	4	1300.00	1300.00	264	
L-10 SR. YDS.							
ITEM	STATION	LENGTH		WIDTH		TOTAL	
		FROM	TO	FROM	TO		
1-B	302+15	305+57	L	16' X 1.5'	88		
2-B	307+38	310+33	L	16' X 1.5'	56		
3-B	301+00	301+10	R	10' X 12'	14		
4-B	301+00	303+82	R	16' X 1.5'	53		
5-B	307+28	309+16	R	16' X 1.5'	53		
TOTAL							264

ITEM	LOCATION	LIN. FT.	TOTAL		
			2-G RAMP #2-E, STAG 478	37.5'	
1-F	298+00	311+00	1	1	
2-F	298+50	301+00	1	1	
3-F	298+00	301+00	1	1	
4-F	301+00	304+50	1	1	
5-F	304+50	307+20	1	1	
6-F	307+20	311+00	1	1	
7-F	298+00	307+27	1	1	
8-F	300+00	307+27	1	1	
9-F	307+27	311+00	1	1	
TOTAL					274.00

ITEM	STATION	TO	SHALLOW		DEEP		TOTAL	
			FROM	TO	FROM	TO		
1-F	298+00	311+00	L	224	20	1180	1	
2-F	298+50	301+00	L	50	20	228	1	
3-F	298+00	301+00	L	20	20	326	1	
4-F	301+00	304+50	L	20	20	358	1	
5-F	304+50	307+20	L	100	10	640	1	
6-F	307+20	311+00	L	100	10	395	1	
7-F	298+00	307+27	L	100	10	395	1	
8-F	300+00	307+27	L	100	10	395	1	
9-F	307+27	311+00	L	100	10	395	1	
TOTAL								274.00

I-B MONUMENT ASSEMBLY

ITEM	STATION	SIDE	R OR L	TYPE	
1-M	301+98.41	4		1	
TOTAL					1

ITEM	STATION	SIDE	STORM SEWER															I-16 EA.				E-12		LOCATION OF STRUCTURE								
			I-2 LIN. FT.															I-5 EACH				E-12										
			12" CLB	15" CLB	18" CLB	36" CLB	39" CLB	42" CLB	48" CLB	54" CLB	6" CLB	12" CLB	12" CLB	15" CLB	15" CLB	18" CLB	18" CLB	48" CLB	12" CLB	48" CLB	STD. #2	STD. #5	STD. #1		STD. #2	STD. #3	STD. #4	M.H.	C.B.	PIPE	REMOVAL	
1-5	298+00	300+17	L	R	63																									298+06; +60; 299+42; 300+02		
2-5	RAMP #1-E, STAG 478	303+61	L	R																									240	RAMP #1-E, STAG 478; 301+00; +75		
3-5	302+91	304+50	L	R	6		6																						302+91; 74; 303+50; +61; 304+50			
4-5	303+61	307+13	L	R						350																				306+91; +98; 307+06		
5-5	307+13	310+10	L	R			6	9		296																				307+05; +11; +13; +20		
6-5	309+95	311+00	L	R			6	9		90																				309+95; 310+06; +10; +18; +75		
TOTAL					69	6	21	90	296	350	204	6	210E	235	104	81	82	23	100	210	114	113	336	1	1	1E	5	5	9	2	6	690

PLAN & PROFILE --- MAIN LINE --- STA. 298+00 TO STA. 311+00