

F.W.Y. CURVE No. 2-E	F.W.Y. CURVE No. 3-E
DATA $\Delta = 0^\circ 50' 24.6"$ $\Delta = 18' 43' 16.5"$ $R = 6819.66'$ $T = 400.46'$ $LC = 799.54'$ $E = 11.75'$	DATA $\Delta = 0^\circ 28' 00"$ $\Delta = 5^\circ 09' 36"$ $R = 12277.58'$ $T = 338.66'$ $L = 677.14'$ $E = 4.67'$

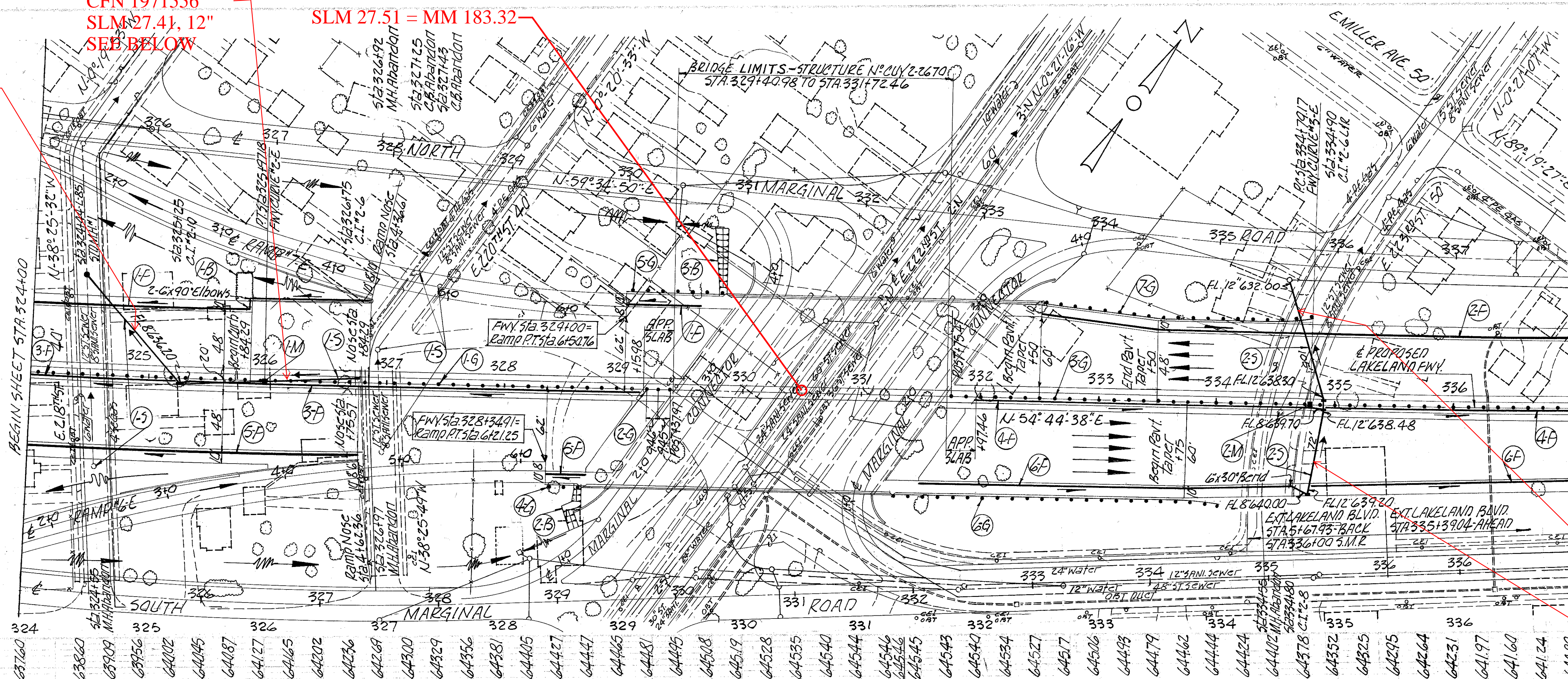
B.M. O.M. 52 ELEV. 638.076
 Approx. 691 ft. E. of C.L. of E. 222nd St. and 27 ft. S. of C.L. of Lakeland Blvd. E. of angle point produced W. 25.55 ft. N.E. of N.V. in 08T pole #13396 on top of Bank on E. side of E. 222nd St. 11.56 ft. N.W. of N.W. corner of bridge bldg. (State Plastic Inc.)
 B.M. O.M. X-58 ELEV. 636.428
 Approx. 27 ft. N. of C.L. of Lakeland Blvd. and 430 ft. N.E. of C.L. of E. 222nd St. in N. walk of Lakeland and 892 ft. S.W. of C.L. of E. 222nd St. 59.96 ft. N. of top and center of hyd. on S. side of Lakeland.

NOTE:
 Existing Light Along The North side of EXT. LAKELAND BLVD. ARE TO REMAIN IN PLACE EXCEPT AS NOTED ON LIGHTING SHEET NOS 100, 101, 102 & 103.

FOR PAVEMENT DETAILS & ELEVATIONS SEE SHEET NOS 61, 62 & 63

CFN 1971542
 SLM XX, 12"

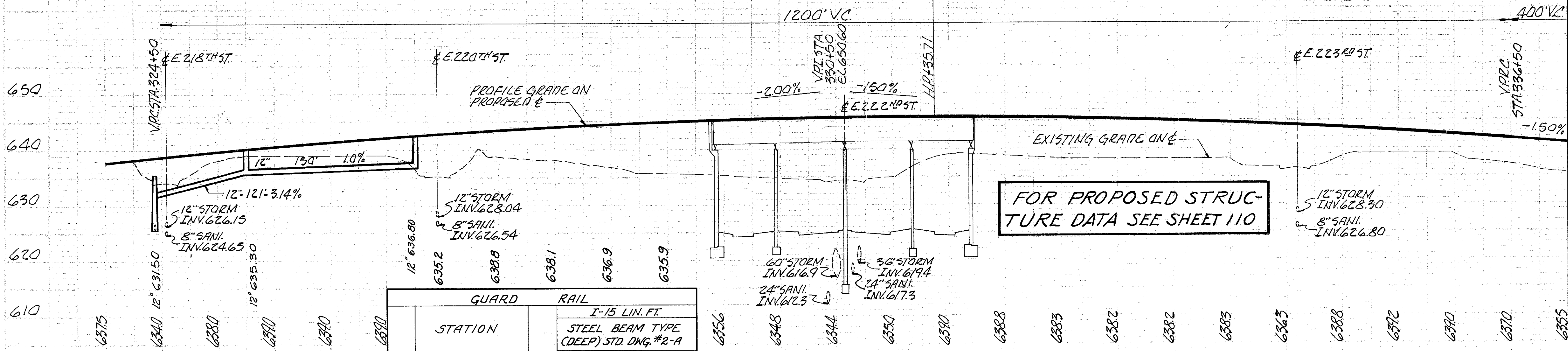
CFN 1971563
 SLM XX, 12"



CFN 1971539
 SLM 27.40, 12"
 SEE BELOW

CFN 1971556
 SLM 27.41, 12"
 SEE BELOW

E. 222nd STREET
 SLM 27.51 = MM 183.32



ITEM No	STATION		SIDE R OR L	I-15 LIN. FT.	
	FROM	TO		BARRIER DESIGN	STANDARD DESIGN
1-G	324+00	329+19.06	Q	519.06	
2-G	329+19.06	329+40.98	Q	21.92	
3-G	331+72.46	337+00	Q	527.54	
4-G	328+34.91	328+65.79	R		30.88
5-G	329+00	329+84.62	L		84.62
6-G	331+27.57	334+00	R		272.43
7-G	332+51.63	334+80	L		228.35
TOTAL				1068.52	616.28

STA. 320+00 TO STA. 340+00
 EXCAVATION 47,258 CU. YDS.
 EMBANKMENT 58,838 CU. YDS.
 EMBANKMENT +22% 71,783 CU. YDS.

ITEM No	STATION	SIDE R OR L	I-8 MONUMENT ASSEMBLY	
			TYPE "B"	EACH
1-M	325+97.18	Q	1	
2-M	334+79.17	Q	1	
TOTAL			2	

ITEM No	STATION		SIDE R OR L	I-2 LIN. FT.		I-8 EACH				I-16 EA.	LOCATION OF STRUCTURE	
	FROM	TO		12" CLB	12" CLB	STD. #1	STD. #2-6	STD. #2-8	STD. #2-10			
	M.H.	C.I.		M.H.	C.I.	M.H.	C.B.					
1-S	324+44	327+43	L&R	148	118	1	1	1	3	2	324+44; +55; 325+25; 326+28; 326+92; +97; 327+25; +43	
2-S	334+55	334+90	L&R	6	172	2	1	1	1	1	334+55; +80; +90	
TOTAL				154	290	1	3	1	1	4	2	

STATION	FROM	TO	SIDE R OR L	LENGTH	WIDTH	SODDING		TOTAL
						FOR SPECIAL BERM PROTECTION	FOR PROTECTION	
324+00	329+19.06	329+40.98	Q	21.92	10	10	20	20
331+72.46	337+00	337+00	Q	527.54	10	10	20	20
328+34.91	328+65.79	328+65.79	R	30.88	10	10	20	20
329+00	329+84.62	329+84.62	L	84.62	10	10	20	20
331+27.57	334+00	334+00	R	272.43	10	10	20	20
332+51.63	334+80	334+80	L	228.35	10	10	20	20
TOTAL				1068.52	616.28			1240

PLAN & PROFILE - MAIN LINE - STA. 324+00 TO STA. 337+00