

SLM 0.98, 24"  
MM 156.79  
SEE SHEET 60  
REMOVED IN 2000

SLM 0.98, 18"  
MM 156.79  
SEE SHEET 60  
REMOVED IN 2000

SLM 0.98, 15"  
MM 156.79  
SEE SHEET 60  
REMOVED IN 2000

SLM 0.98, 15"  
MM 156.79  
SEE SHEET 60  
REMOVED IN 2000

Low Priority Outfall  
CUY12020R  
SLM 1.14, Ditch

PROPOSED STRUCTURE - STRUCTURE NO. CUY-90-0095  
TYPE: Continuous Steel Beam With Reinforced Concrete Deck and Substructure  
SPANS: 70'; 2@82'; 57.5' 9c Bearings  
ROADWAY: 52'-0" flt of 4'-0" Sidewalks  
LOAD FREQUENCY: CF 400(57) SKEW: 0°  
WEARING SURFACE: 1" Monolithic Concrete  
APPROACH SLABS: AS-1-67 (25' Long)  
ALIGNMENT: Tangent

old CFN 180900114  
new CFN 1876441  
SLM 1.14, 68"x43"  
HEL, MM 156.95  
SEE SHEET 21

Item No.	Station	Side	Conduit Type "B"		Conduit Type "C"		Standard Catch Basin						Concrete Masonry	Channel Protection	Jule Mating
			15"	18"	12"	15"	No. 3-A	No. 4	No. 5	No. 6	Standard	Manhole			
From		To		Lin. Ft.	Lin. Ft.	Lin. Ft.	Each	Each	Each	Each	Each	Each	Each	Each	
1-D	50+00	51+80	RL			180									
2-D	51+23	51+23	RL											42	
3-D	51+80	53+25	LL	46	51	12	29	2	1	1		135	0.51		
4-D	51+80	53+25	RL			105								125	
5-D	51+87	53+37	RL											125	
6-D	53+25	53+37	RL			12		2						125	
7-D	51+87	53+37	LL											125	
8-D	56+50		RL	81				1				0.26	3.6		
9-D	60+25		RL	71						1		0.26	3.6		
Totals				198	51	157	42	204	5	1	1	1	135	1.03	7.2

\* 706.01ES, 706.02 or 706.08

CFN XXXXXXX  
SLM 1.14, 15"  
MM 156.95  
SEE SHEET 61  
INV. 3/3/2017  
NEEDS INS

Item No.	Station	Side	6" Pipe Under-drain		6" Pipe Under-drain		Conduit Type-F		Bends & Branches	Guard Rail Type-5	Anchor Assembly	Approach End Assembly
			Shallow	Deep	Unclassified	6"	Lin. Ft.	Each				
From		To		Lin. Ft.	Lin. Ft.	Lin. Ft.	Each	Each	Each	Each	Each	
4-D	50+00	61+00	LL	1080	34	30	1					
2-D	50+00	61+00	RL	1080		28	1					
1-B	50+00	51+25.00	RL						225.00	2		
2-B	50+00	52+12.50	LL						212.50	1	1	
Totals				2160	34	58			437.50	3	1	

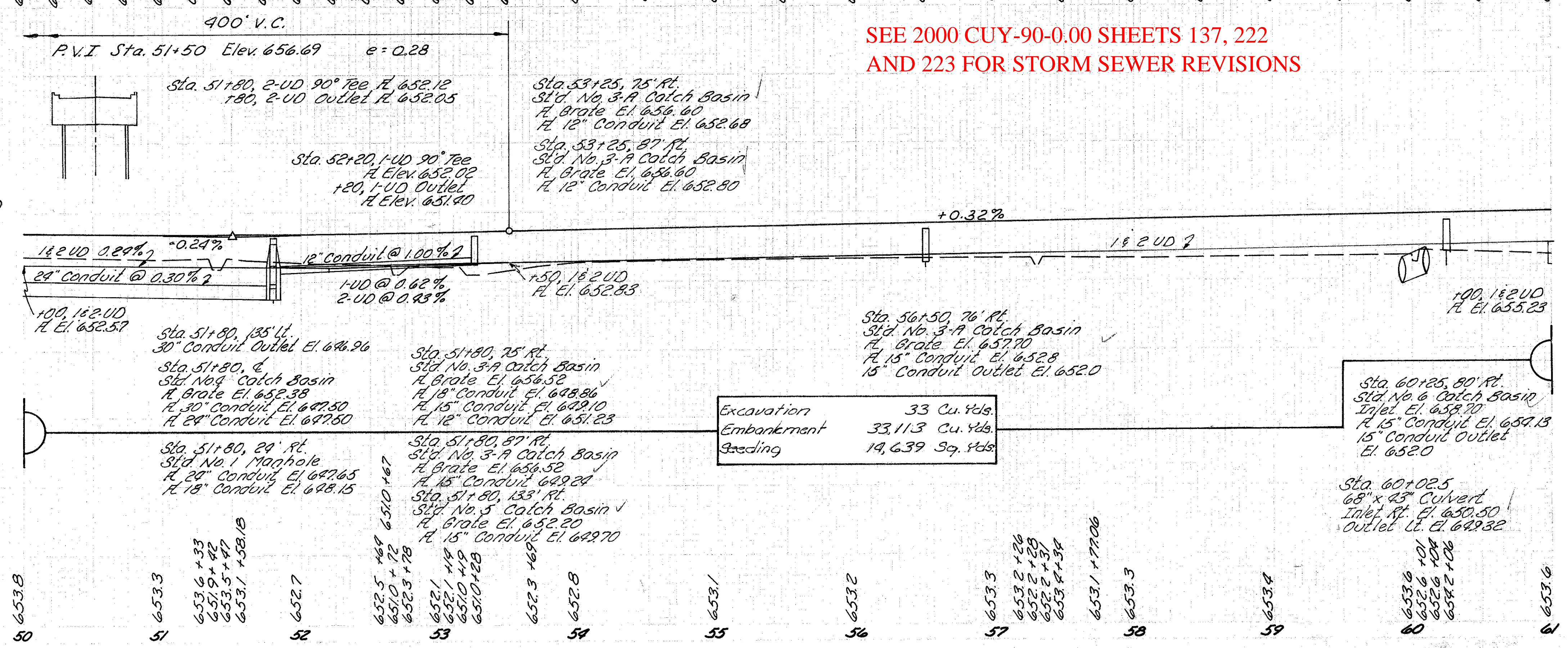
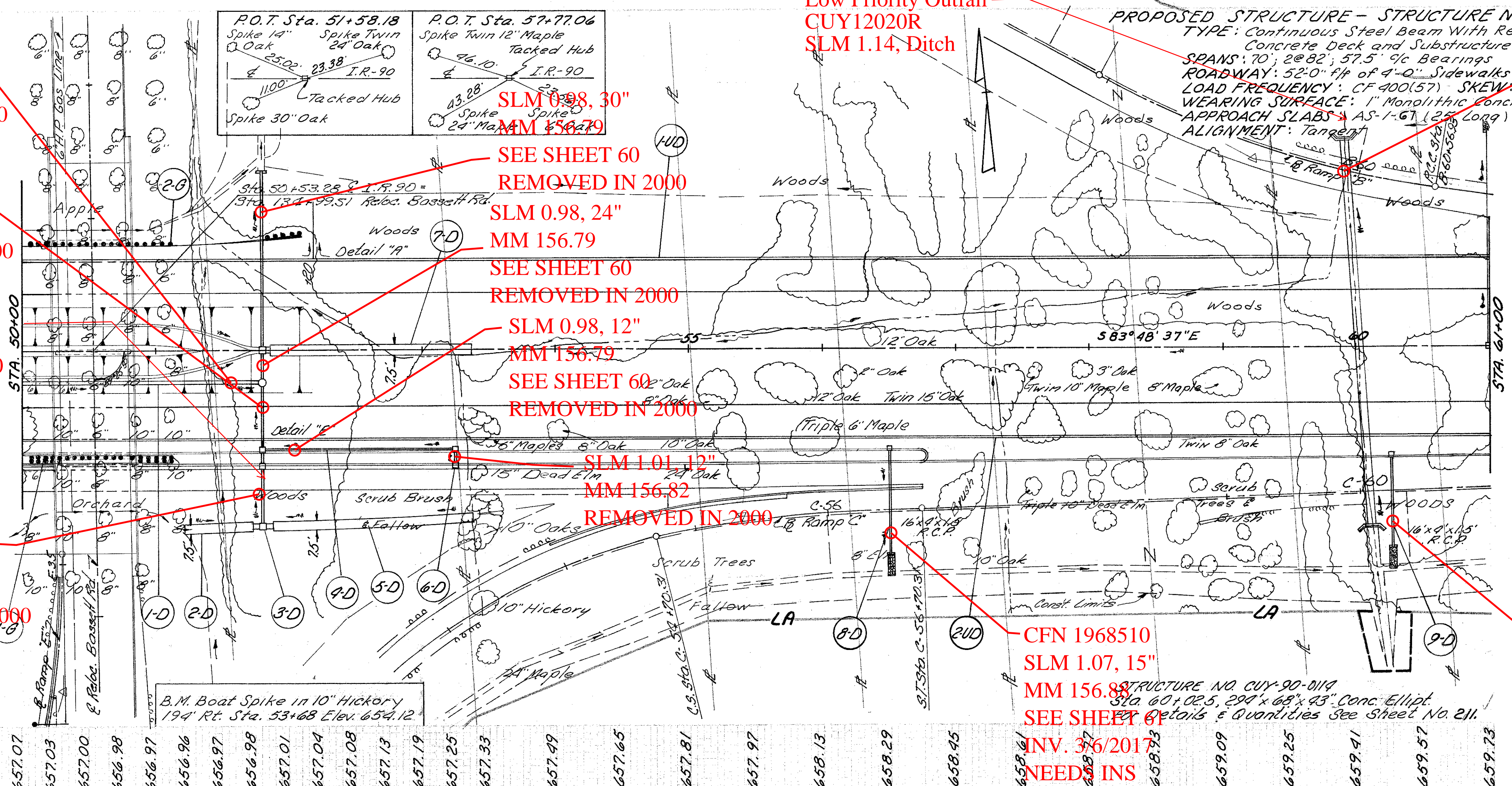
See Sheet No. 109 For Bassett Road Plan and Profile  
See Sheet No. 89+90 For Ramp-B Plan and Profile  
See Sheet No. 95 For Ramp-C Plan and Profile  
See Sheet No. 116 For Ramp-E and C Collector Lane and Ramp-C Entrance Detail

SEE 2000 CUY-90-0.00 SHEETS 137, 222 AND 223 FOR STORM SEWER REVISIONS

Excavation	33 Cu. Yds.
Embankment	33,113 Cu. Yds.
Grading	19,639 Sq. Yds.

Sta. 60+25, 80' Rt.  
Std. No. 6 Catch Basin  
Inlet El. 658.70  
R. 15" Conduit Outlet El. 652.0

Sta. 60+02.5  
68" x 23" Culvert  
Inlet Rt. El. 650.50  
Outlet Lt. El. 649.32



QUANTITIES CALC. P.D. 10-24-68  
QUANTITIES CKD. H.S. 10-31-68

APPROX. V.L. 10-24-68  
M.M. 10-24-68  
C.C. 10-24-68  
S.S. 10-24-68  
D.D. 10-24-68  
R.R. 10-24-68  
B.M. 10-24-68  
R.L. 10-24-68