

P.I. STA. 230+61.84 @ W.B.L.
 P.I. STA. 231+14.98 @ SURVEY
 P.I. STA. 231+68.34 @ E.B.L.
 $\Delta = 12^{\circ}00' - 21''$ RT.
 $D = 0^{\circ}28'$
 $R = 12,277.67'$
 $T = 1,294.06'$
 $L = 2,572.67'$
 $E = 67.69'$

CLAGUE RD
 SLM 4.58=MM 160.39

BRIDGE
 SFN 1808001
 SEE SHEET 427

REFERENCE SHEETS	SHEET NOS
MEDIAN TRANSITION	6
WATERLINE WORK	506,507
WASHWATER DRAIN	515-519
SANITARY SEWER WORK	469
INTERCHANGE INDEX	192
PAVEMENT DETAILS (TAPERS)	29
BRIDGE NO. CUY-90-0458	792-804
SERVICE ROAD	181
GUARD RAIL SUMMARY	21
DETAIL OF CONC. ARCH OVER TRIPLE 96" PIPES	425
CONCRETE BARRIER, DETAILS & SUMMARY	22,24

CUY-90-2.80

QUANTITIES CALC. JcHc 7 MAY 1973
 QUANTITIES CK'D 5-8-73 J.D.

44
 966

old CFN 180900405
 new CFN 1877364
 SLM 4.57, 60"
 MM 160.38
 SEE SHEET 426

old CFN 180900457
 new CFN 1877366
 SLM 4.57, 60"
 MM 160.38
 SEE SHEET 443

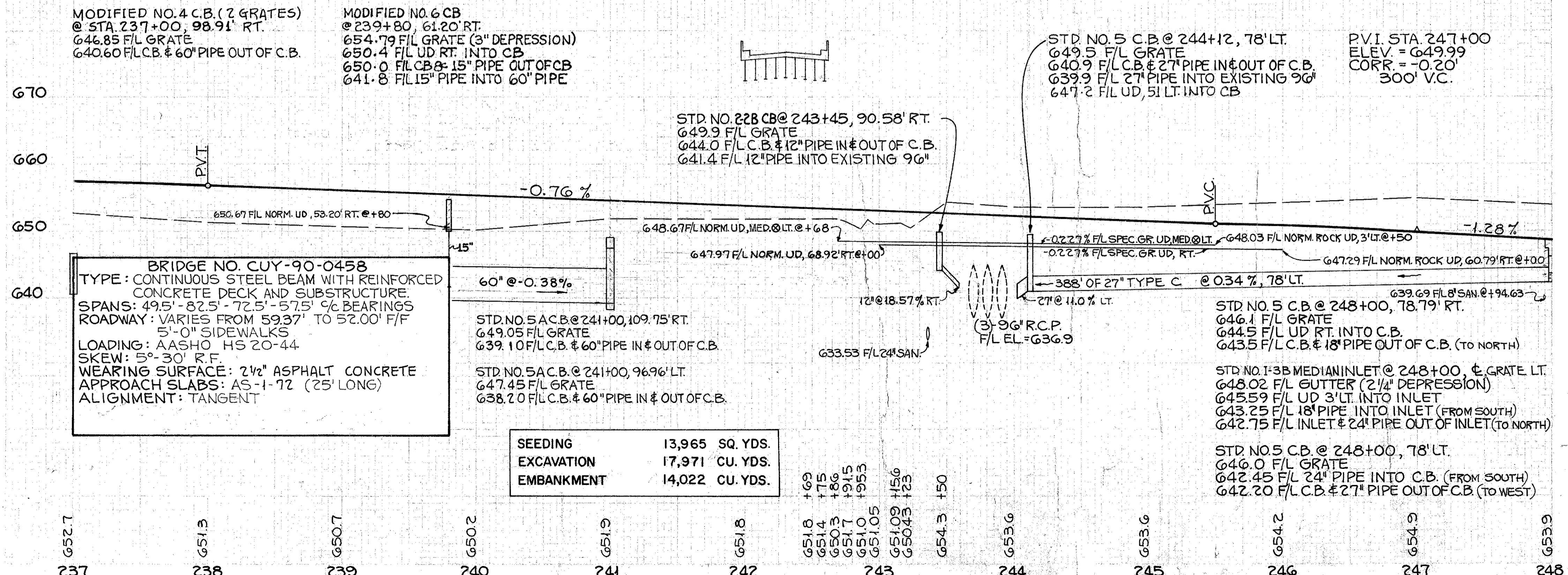
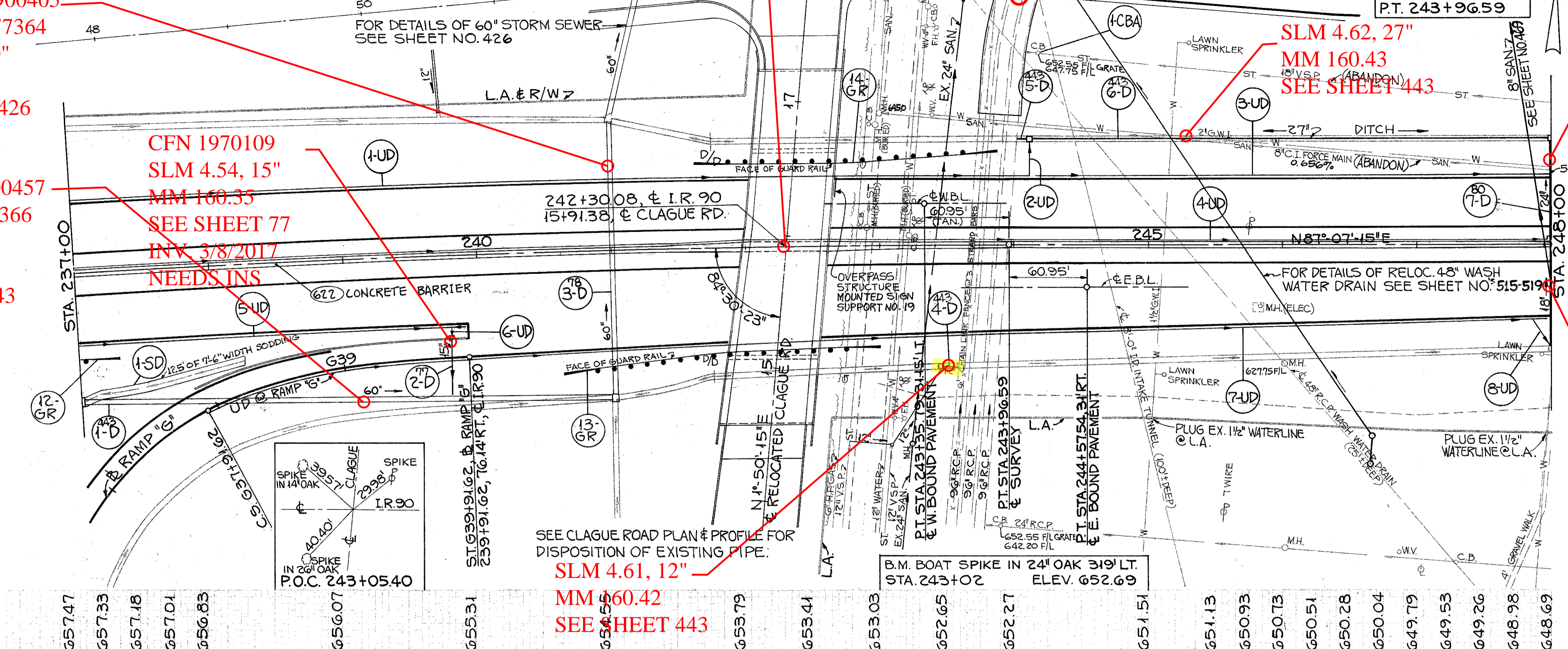
CFN 1970112
 SLM 4.70, 24"

MM 160.51
 SEE SHEET 80
 INV. 3/9/2017
 NEEDS INS

CFN 1970097
 SLM 4.70, 18"
 MM 160.51
 SEE SHEET 80
 INV. 3/9/2017
 NEEDS INS

REF.	STATION	605 SHALLOW PIPE UNDER-DRAINS G'	605 SHALLOW PIPE UNDER-DRAINS G'	603 CONDUIT TYPE F G'	BENDS & BRANCHES G'	605 UNCLASS'D PIPE UNDER-DRAINS G'	600 SODDING SQ. YDS.
		15" L.F.	18" L.F.	24" L.F.	90° BEND	60" WYE	
1-UD	244+12	715			1		
2-UD	244+12	16		10			
3-UD	244+16 TO 248+00 LT.		379	5			
4-UD	237+00 TO 247+99 LT.	568	239	10		282	
5-UP	237+00 TO 239+90 FT.	289			1		
6-UP	239+80			9			
7-UP	239+91.02 TO 247+97 RT.	308	197	10		300	
8-UP	247+86 TO 247+99 RT.		16				
1-SD	237+02 TO 238+25 RT.						104
TOTALS		1896	831	44		582	104

UNDERDRAIN TO REMAIN 1' OUTSIDE OF TOE OF CONCRETE BARRIER THRU OUT.



REF.	STATION	603 CONDUIT TYPE B				TYPE C		604 CATCH BASINS				STANDARD INLET NO. I-3B	CATCH BASINS ABANDONED	
		15" L.F.	18" L.F.	24" L.F.	60" L.F.	60" L.F.	27" L.F.	STANDARD	MODIFIED	STANDARD	MODIFIED			
1-D	237+00 TO 241+00 RT.													
2-D	239+80 RT.	46				397								
3-D	241+00									2				
4-D	243+45 TO 243+58 RT.				14									
5-D	244+02 TO 244+12 LT.													
6-D	244+12 TO 248+00 LT.					388								
7-D	248+00			77	74									
* 1-CBA	244+18 LT.													1
TOTALS		46	77	74	208	397	14	398	1	1	3	2	1	1

NO SODDING WITH CB'S AS ALL IN ROCK CUT.
 * CONNECT PIPE THRU