

SLM 5.33, 72"
MM 161.14
SEE SHEET 445

SLM 5.36, 72"
MM 161.17
SEE SHEET 445

CFN XXXXXXX
SLM 5.45, 15"
MM 161.26
SEE SHEET 91
INV. 3/10/2017
NEEDS INS.

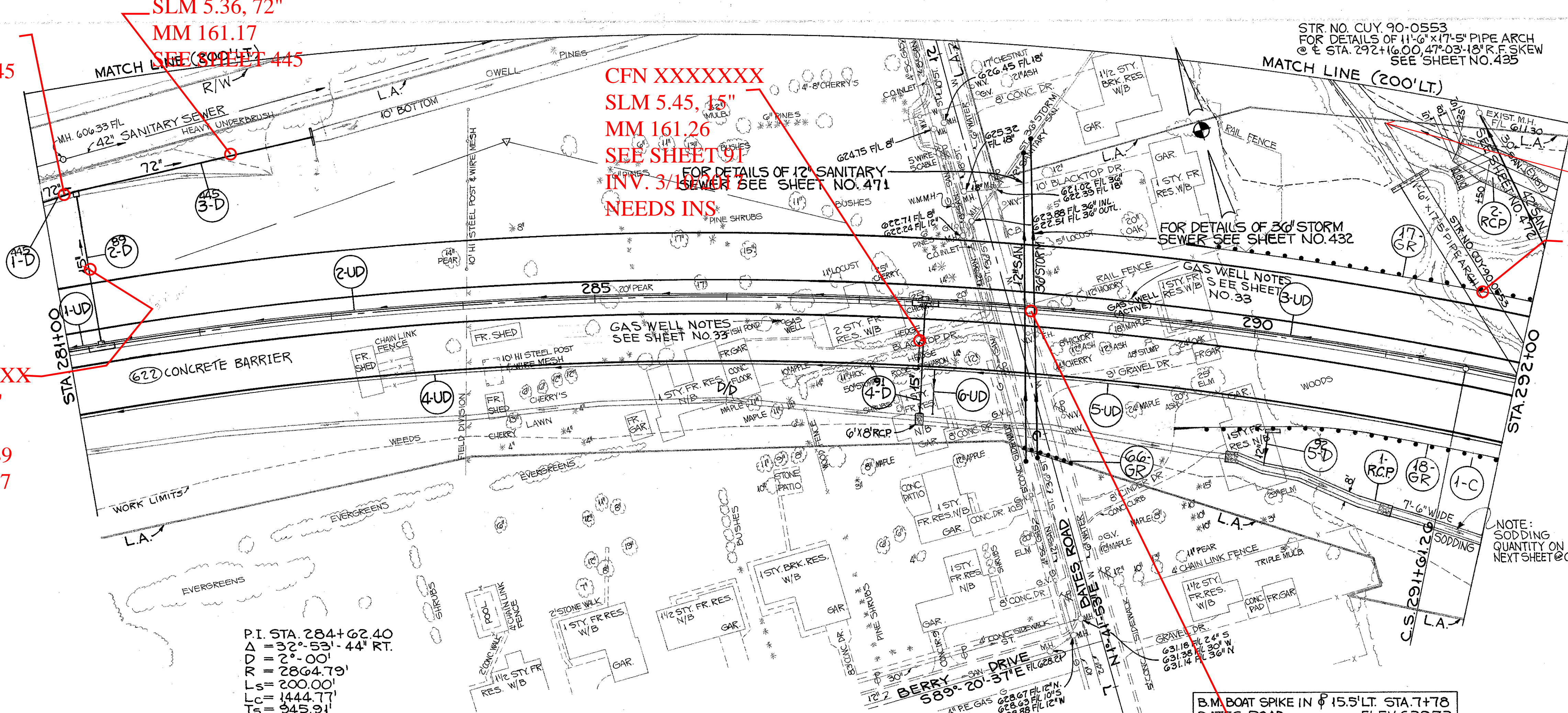
CFN XXXXXXX
SLM 5.33, 15"
MM 161.14
SEE SHEET 89
INV. 3/10/2017
NEEDS INS

REFERENCE SHEETS	SHEET NO'S
BATES ROAD	281
WATER LINE WORK	522
SANITARY SEWER WORK	471, 472
STRUCTURE NO. CUY-90-0553 CHANNEL	434, 435
36" STORM SEWER	432
I.R. 90 SUPERELEVATION TABLE	56
GUARD RAIL SUMMARY	21
CONCRETE BARRIER DETAILS & SUMMARY	22, 25
CURB BEHIND GUARD RAIL DETAIL	31

QUANTITIES CALC.	J.O.H. 7MAY 1973
QUANTITIES CK'D.	5-8-73 J.D.

48
966

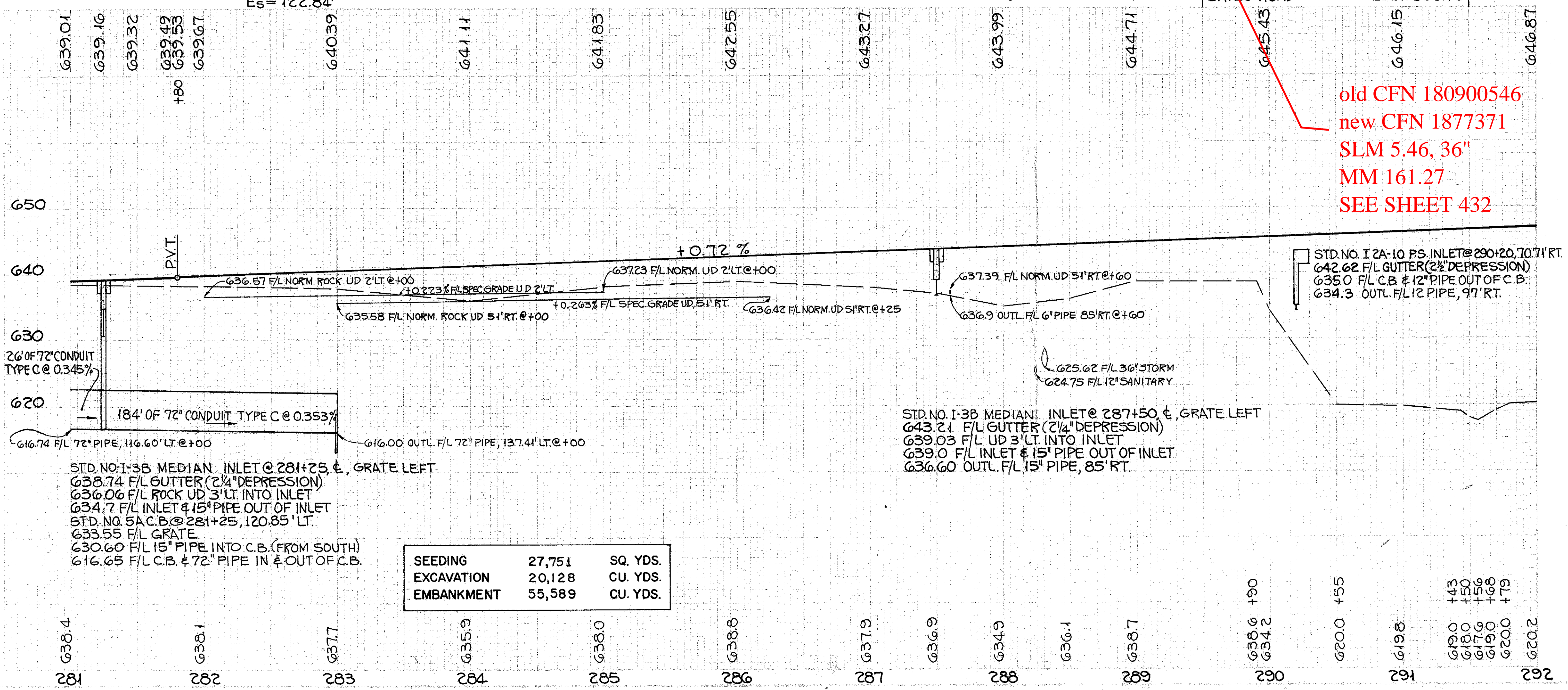
CUY-90-2.80



Low Priority Outfall
CUY12502L
SLM 5.58, Ditch
BRIDGE

REF.	STATION	605 SHALLOW UNCLASSIFIED PIPE UNDER-DRAINS	605 SHALLOW UNCLASSIFIED PIPE UNDER-DRAINS	603 CONDUIT TYPE F	BENDS & BRANCHES	609 ASPHALT CONCRETE CURB TYPE I
		70% TYPE B OR 70% TYPE C	70% TYPE B OR 70% TYPE C	6"	6" TEE	LIN. FT.
1-UD	281+00 TO 281+22, 3' LT.	22				
2-UD	281+26 TO 281+47, 3' LT.	64	300	247	10	
3-UD	287+51 TO 292+00, 3' LT.			439	10	
4-UD	281+00 TO 287+48, 5' RT.	197	319	121		
5-UD	287+52 TO 292+00, 5' RT.			440	1	
6-UD	287+60			24	10	
I-C	290+15 TO 292+00 RT.					181.5
TOTALS		283	619	1271	30	181.5

P.I. STA. 284+62.40
Δ = 32° 53' - 44" RT.
D = 2° - 00'
R = 2864.79'
Ls = 200.00'
Lc = 1444.77'
Ts = 945.91'
Es = 122.84'



old CFN 180900546
new CFN 1877371
SLM 5.46, 36"
MM 161.27
SEE SHEET 432

REF.	STATION	603 CONDUIT TYPE B	604 CONDUIT TYPE C	602 STANDARD PAVED SHOULDER	601 MASONRY HEADWALLS	601 TYPE B ROCK CHANNEL PROTECTION	603 CONDUIT TYPE C	604 CATCH BASINS STANDARD	604 MEDIAN INLET NO. 1-3B
		15"	72"	12A-10	CU. YDS.	18" THK.	12"	NO. 5A	STD. NO.
1-D	281+00 TO 281+25 LT.								
2-D	281+25	113	26					1	1
3-D	281+25 TO 283+00 LT.		184		2.77				
4-D	287+50	84			0.27	4			1
5-D	290+20 RT.			1	0.21		24		
1-RCP	289+90 TO 291+25 RT.					89			
2-RCP	291+25 TO 292+00 LT.					129			
TOTALS		197	210	1	3.5	222	24	1	2

SEEDING	27,751	SQ. YDS.
EXCAVATION	20,128	CU. YDS.
EMBANKMENT	55,589	CU. YDS.

STA. 281+00 TO STA. 292+00