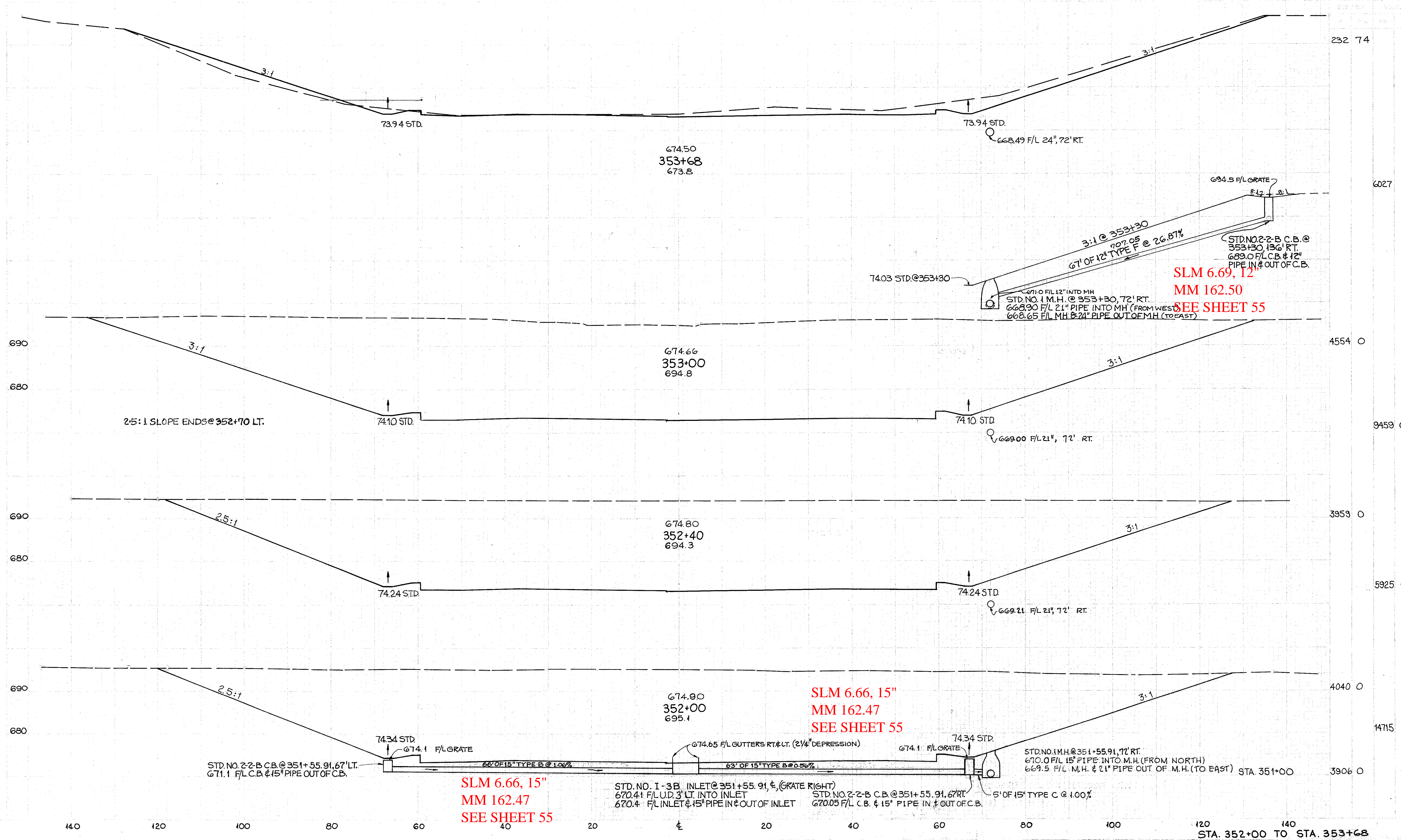


CUY -90-2.80
QUANTITIES CALC. J.H. 3 MAY '73
QUANTITIES CK'D. L.V. 5-8-73



SLM 6.69, 12
MM 162.50
SEE SHEET 55

SLM 6.66, 15"
MM 162.47
SEE SHEET 55

SLM 6.66, 15"
MM 162.47
SEE SHEET 55

STD. NO. 2-2-B C.B. @ 351+55.91, 67' LT.
671.1 F/L C.B. & 15" PIPE OUT OF C.B.

STD. NO. I-3B INLET @ 351+55.91, (GRATE RIGHT)
670.41 F/L U.D. 3' LT. INTO INLET
670.4 F/L INLET & 15" PIPE IN & OUT OF INLET

STD. NO. 2-2-B C.B. @ 351+55.91, 67' RT.
670.05 F/L C.B. & 15" PIPE IN & OUT OF C.B.

STD. NO. 1 M.H. @ 351+55.91, 72' RT.
670.0 F/L 15" PIPE INTO M.H. (FROM NORTH)
669.5 F/L M.H. & 21" PIPE OUT OF M.H. (TO EAST) STA. 351+00

2.5:1 SLOPE ENDS @ 352+70 LT.

STD. NO. 2-2-B C.B. @ 353+30, 136' RT.
669.0 F/L C.B. & 12" PIPE IN & OUT OF C.B.

671.0 F/L 12" INTO MH
STD. NO. 1 M.H. @ 353+30, 72' RT.
668.90 F/L 21" PIPE INTO MH (FROM WEST)
668.65 F/L MH & 21" PIPE OUT OF MH (TO EAST)

440 120 100 80 60 40 20 0 20 40 60 80 100 120 140
STA. 352+00 TO STA. 353+68