

BENCHMARK: CHISELED "□" ON TOP OF RCP  
 STA. 125+45±, 100'± RT., ELEV.= 658.74  
 SEE SHEETS 547 TO 581 FOR  
 NOISE BARRIER PROFILES

CFN 1968508  
 SLM XX, 18"  
 SEE SHEET 265  
 INV. 3/6/2017  
 NEEDS INS.

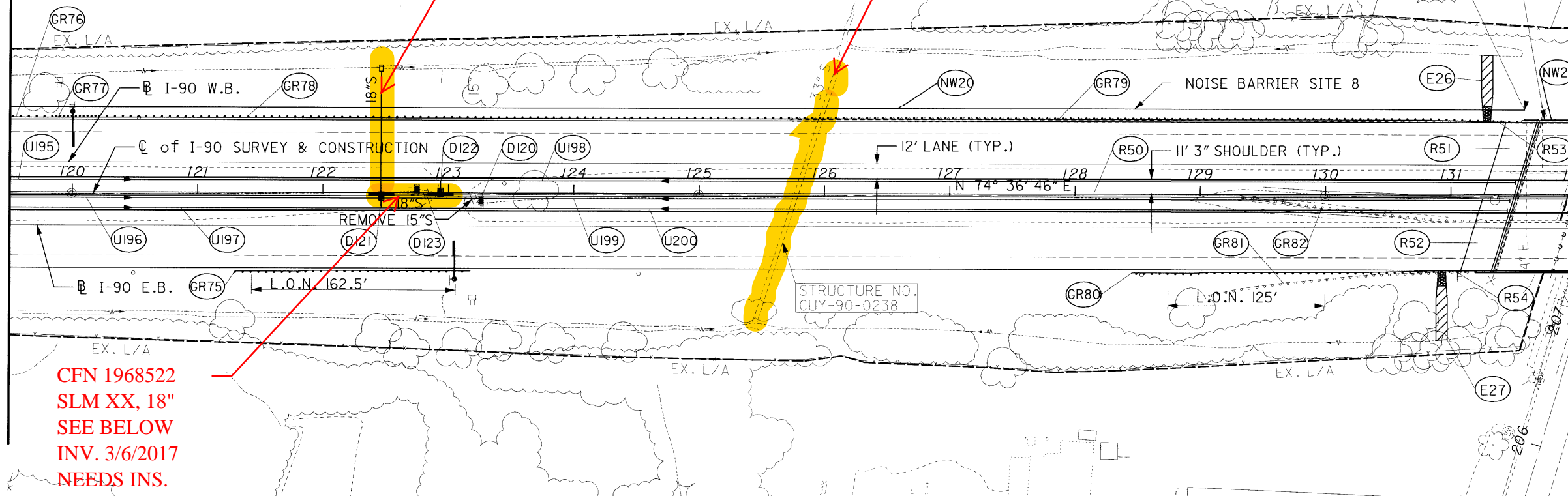
old CFN 180900238  
 new CFN 1876443  
 SLM 2.38, 33"  
 MM 158.19

NOISE BARRIER SITE 9

SUSPEND N.B. STA. 34+72.00  
 C/ I-90 STA. 131+58.46, 69.00' LT.

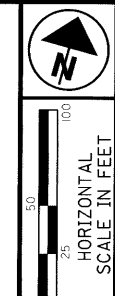
MATCHLINE STA 119+50

MATCHLINE STA 132+00



CFN 1968522  
 SLM XX, 18"  
 SEE BELOW  
 INV. 3/6/2017  
 NEEDS INS.

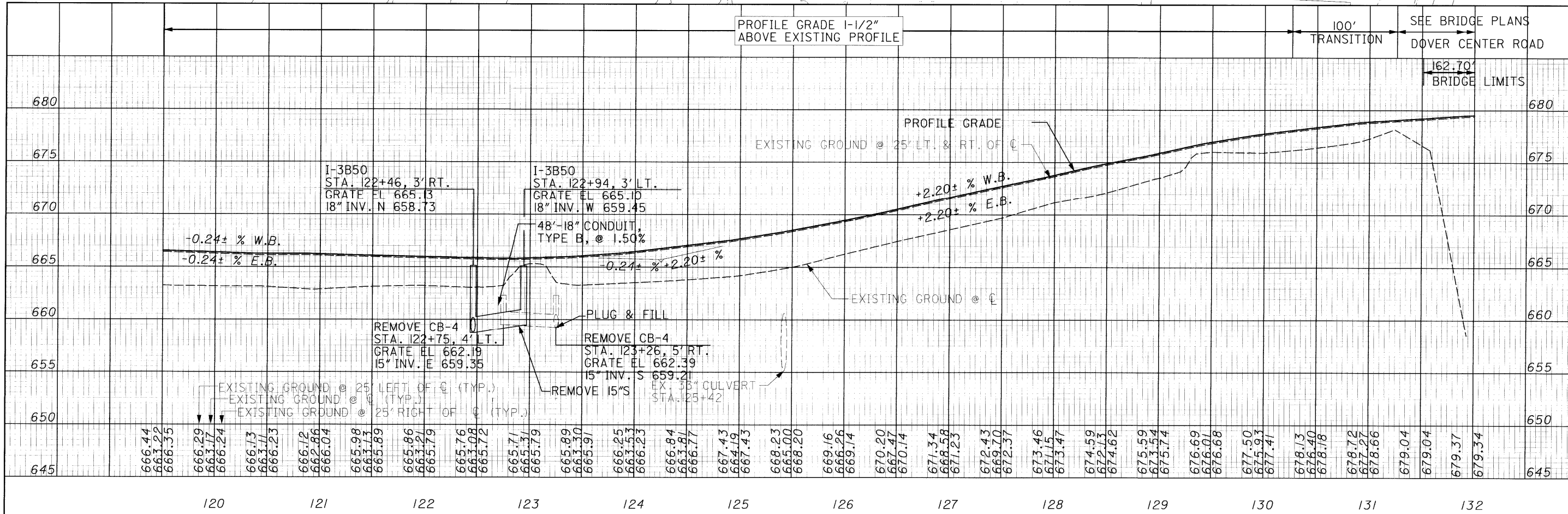
STRUCTURE NO.  
 CUY-90-0238



PLAN AND PROFILE  
 STA 119+50 TO STA 132+00

CUY-90-0.00

155  
 582



07 APR 2000  
 P:\PR22308\cadd\117386P.LDCN