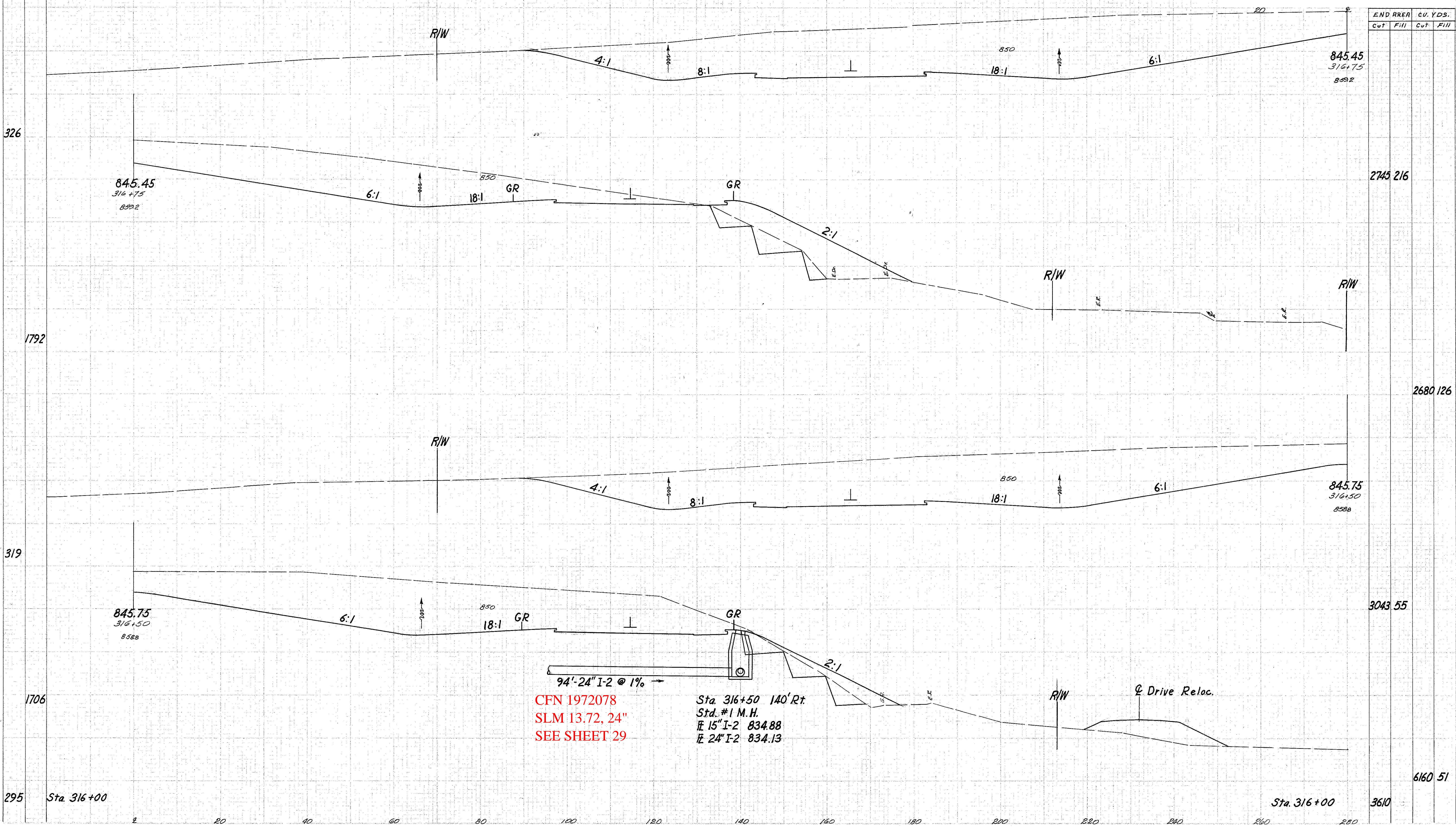


SEEDING
END WIDTH YDS.

183
306

LAKE COUNTY
LAK-1-10.38



CFN 1972078
SLM 13.72, 24"
SEE SHEET 29

Sta. 316+50 140' Rt.
Std. #1 M.H.
E 15" I-2 834.88
E 24" I-2 834.13

94'-24" I-2 @ 1%

Drive Reloc.