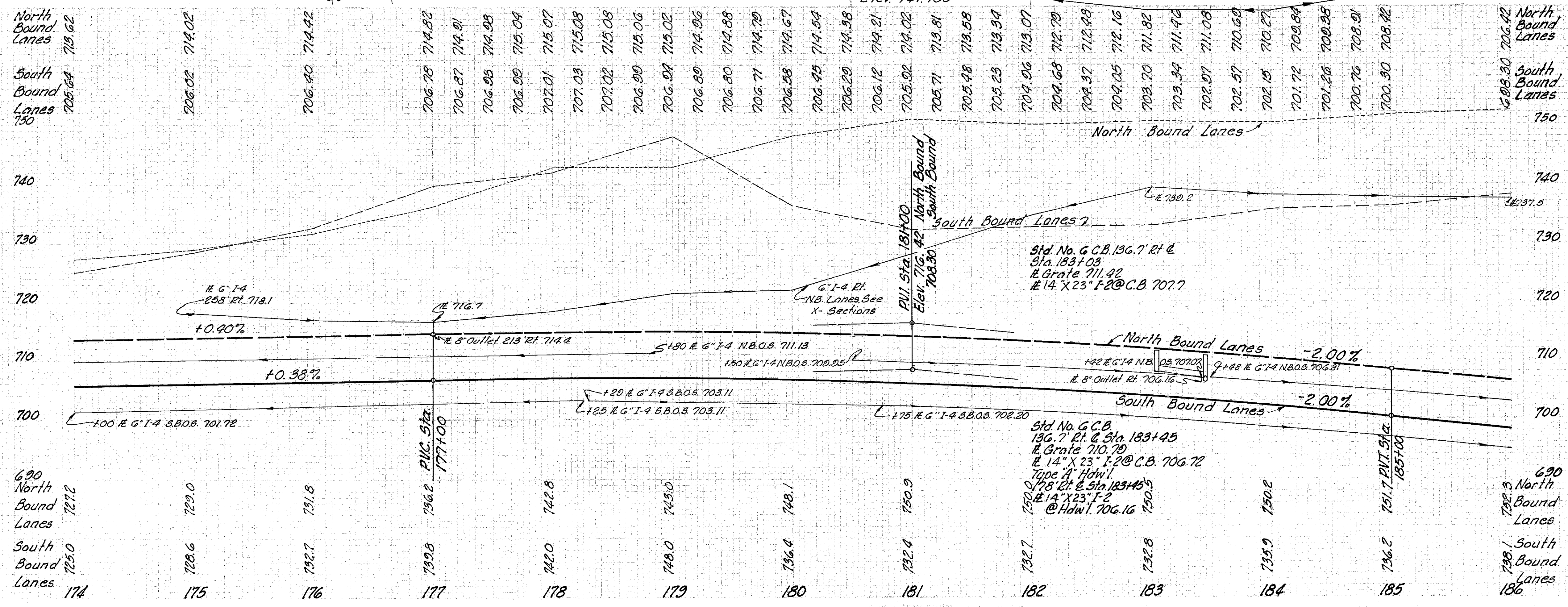
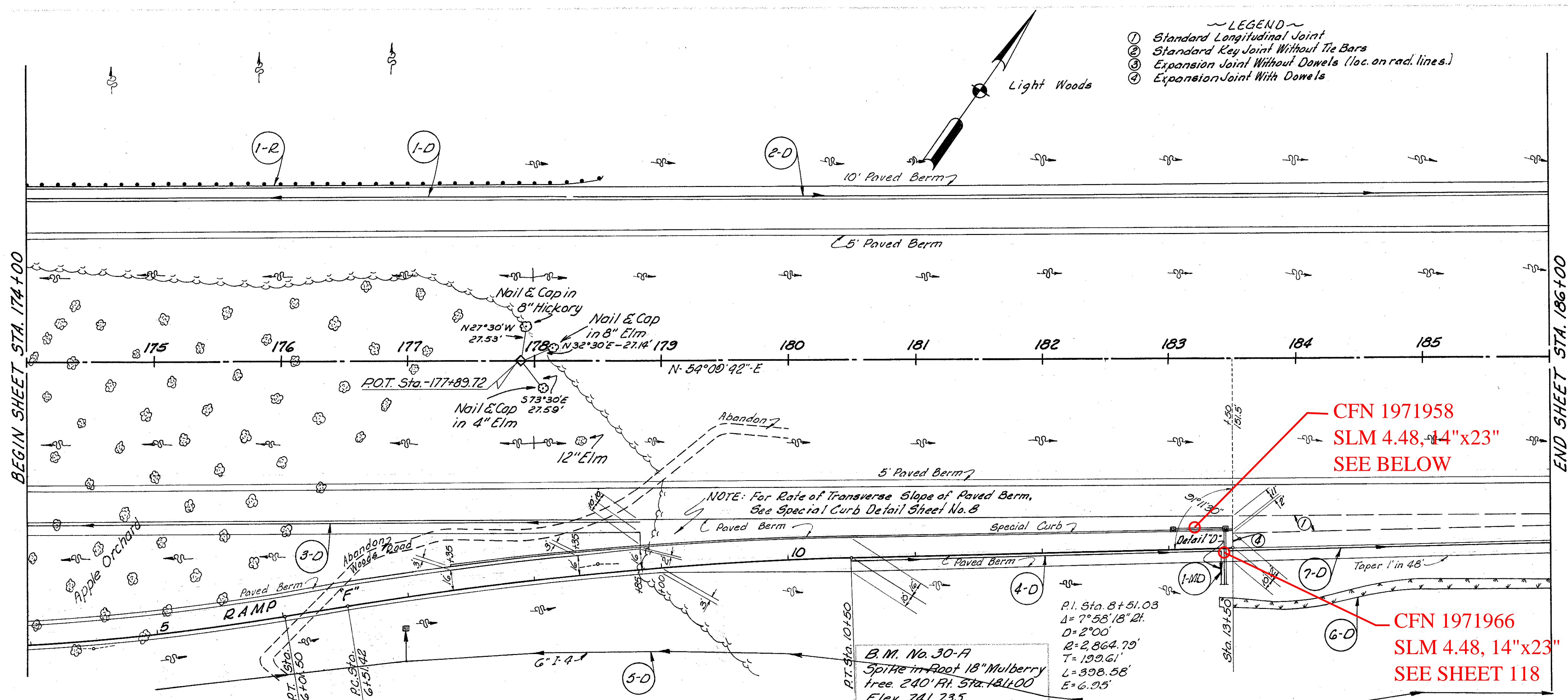


LAKE COUNTY  
LAK-1-2.16

ROADWAY				
Ref. No.	Station		Side &	I-15 Ord. Rail Dwg. & A Lg. Ft.
	From	To		
I-R	174+00	178+50	Lt.	450.0
Totals				450.0

- ~ LEGEND ~
- ① Standard Longitudinal Joint
  - ② Standard Key Joint Without Tie Bars
  - ③ Expansion Joint Without Dowels (loc. on rad. lines.)
  - ④ Expansion Joint With Dowels



Station	From	To	Side &	Excav. for Structures		Excav. for Storm		Underdrain		Totals
				Cu. Yds.	Lbs. Steel	Cu. Yds.	Lbs. Steel	6\"/>		
174	174+00	174+00	Lt.	0	0	0	0	0	0	0
175	174+00	175+00	Lt.	0	0	0	0	0	0	0
176	174+00	176+00	Lt.	0	0	0	0	0	0	0
177	174+00	177+00	Lt.	0	0	0	0	0	0	0
178	174+00	178+00	Lt.	0	0	0	0	0	0	0
179	174+00	179+00	Lt.	0	0	0	0	0	0	0
180	174+00	180+00	Lt.	0	0	0	0	0	0	0
181	174+00	181+00	Lt.	0	0	0	0	0	0	0
182	174+00	182+00	Lt.	0	0	0	0	0	0	0
183	174+00	183+00	Lt.	0	0	0	0	0	0	0
184	174+00	184+00	Lt.	0	0	0	0	0	0	0
185	174+00	185+00	Lt.	0	0	0	0	0	0	0
Totals				0	0	0	0	0	0	0

MICHAEL BAKER JR., CONSULTING ENGINEERS  
ROCHESTER, PENNSYLVANIA

STATE OF OHIO  
DEPARTMENT OF HIGHWAYS  
STATE HIGHWAY NO. 1  
C-43  
PLAN AND PROFILE  
STA. 174+00 TO STA. 186+00

Designed	Drawn	Traced	Checked	Reviewed	Date	Revised
B.P.	A.L.H.	K.A.	R.E.F.			

PLAN & PROFILE STA. 174+00 TO STA. 186+00