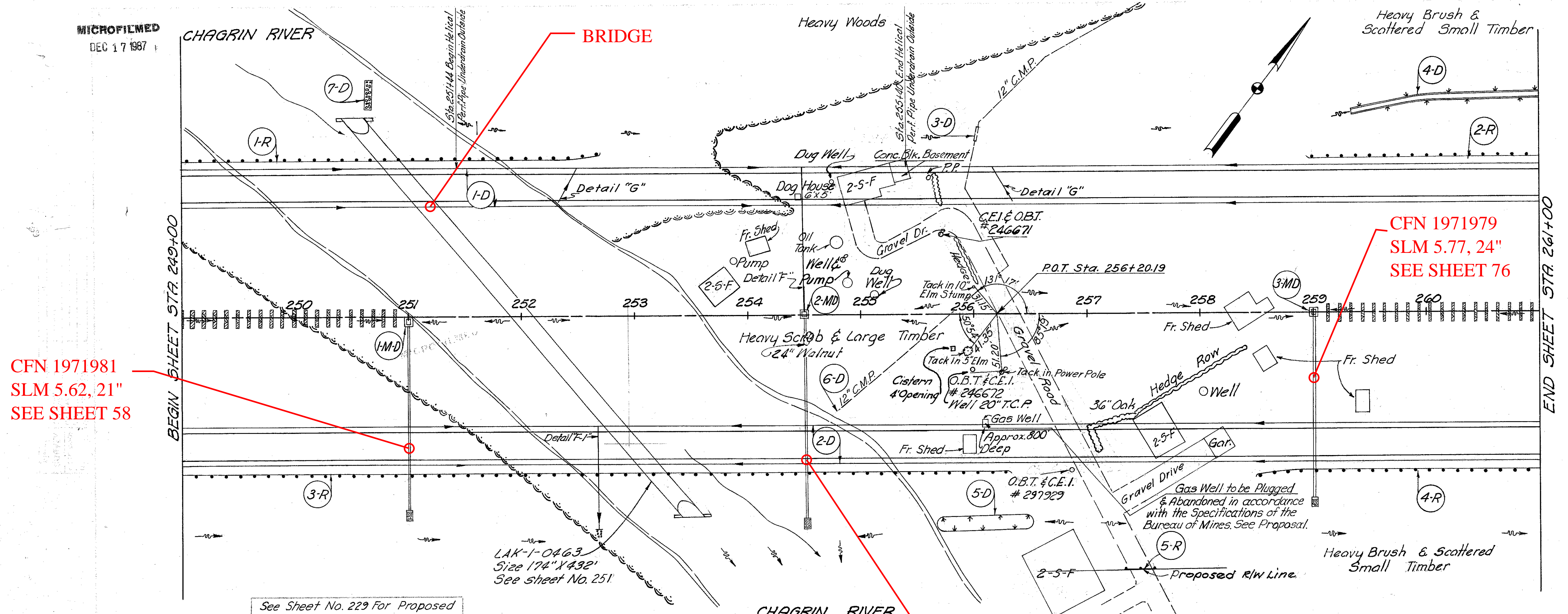


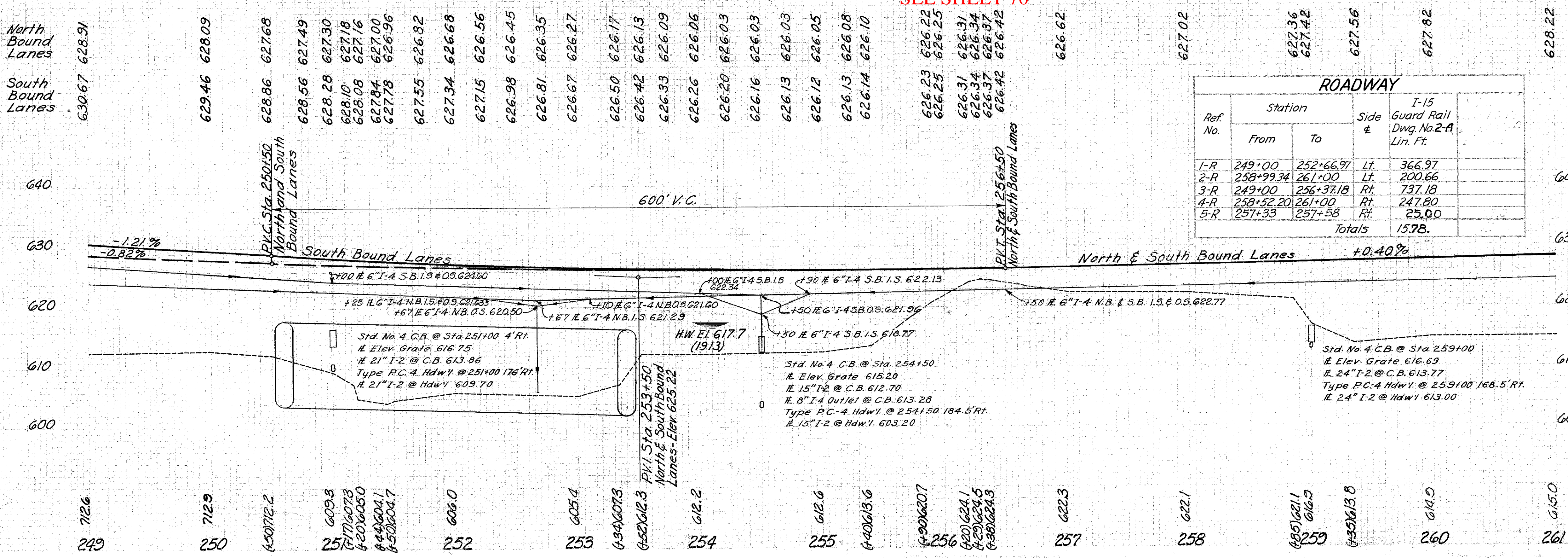
MICROFILMED
DEC 17 1987



CFN 1971981
SLM 5.62, 21"
SEE SHEET 58

CFN 1971979
SLM 5.77, 24"
SEE SHEET 76

CFN 1971983
SLM 5.69, 15"
SEE SHEET 70



| See Sh. No. | Ref. No. | Station | Side | | Total |
|-------------|----------|---------|------|-----|-------|
| | | | From | To | |
| 58 | 1-MD | 251+00 | Lt. | Lt. | |
| 70 | 2-MD | 254+50 | Lt. | Lt. | |
| 76 | 3-MD | 259+00 | Lt. | Lt. | |
| 240 | 1-D | 249+00 | Lt. | Lt. | |
| 241 | 2-D | 249+00 | Lt. | Lt. | |
| 75 | 4-D | 259+50 | Lt. | Lt. | |
| 79 | 4-D | 259+50 | Lt. | Lt. | |
| 244 | 7-D | 259+00 | Lt. | Lt. | |

MICHAEL BAKER, JR., CONSULTING ENGINEERS
ROCHESTER, PENNSYLVANIA

STATE OF OHIO
DEPARTMENT OF HIGHWAYS
STATE HIGHWAY NO. 1
C-44
PLAN AND PROFILE
STA. 249+00 TO STA. 261+00

| | | | | | | |
|----------|-------|--------|---------|----------|------|---------|
| Designed | Drawn | Traced | Checked | Reviewed | Date | Revised |
| T.L. | K.A. | A.H. | E.H. | | | |

PLAN & PROFILE STA. 249+00 - STA. 261+00