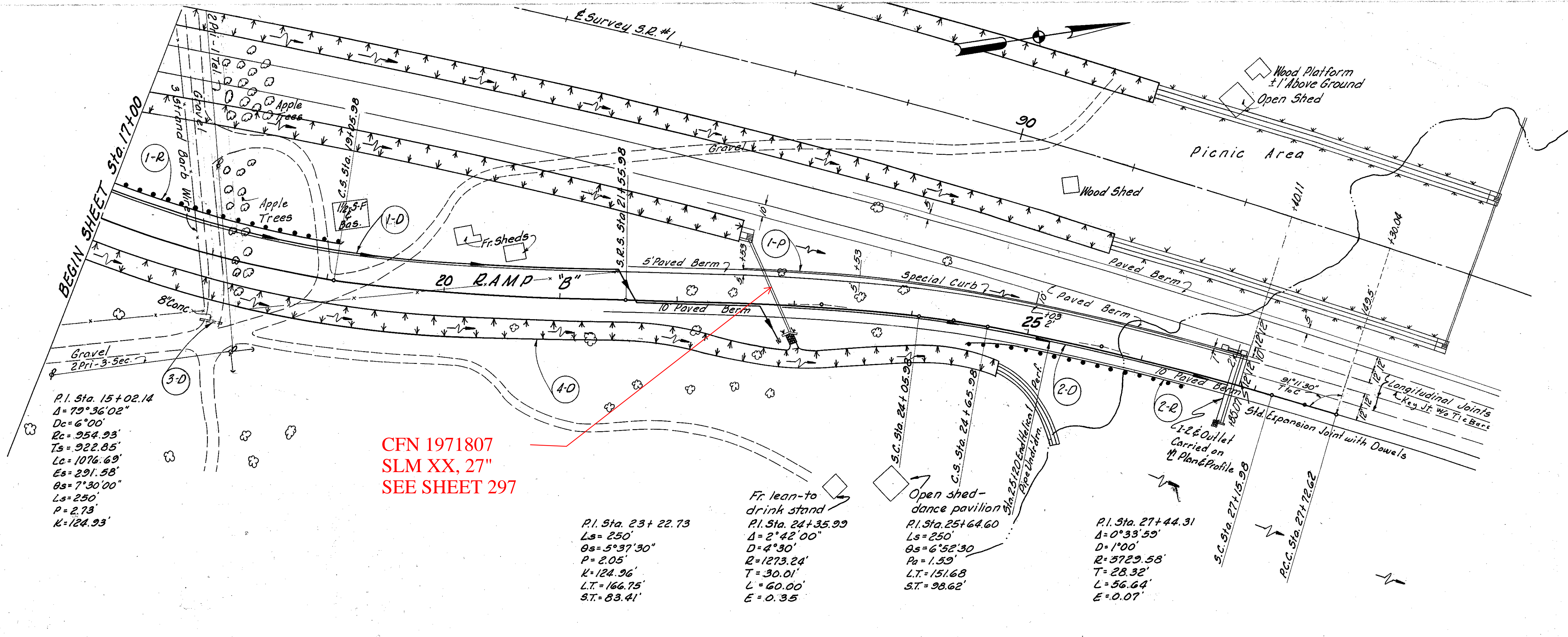


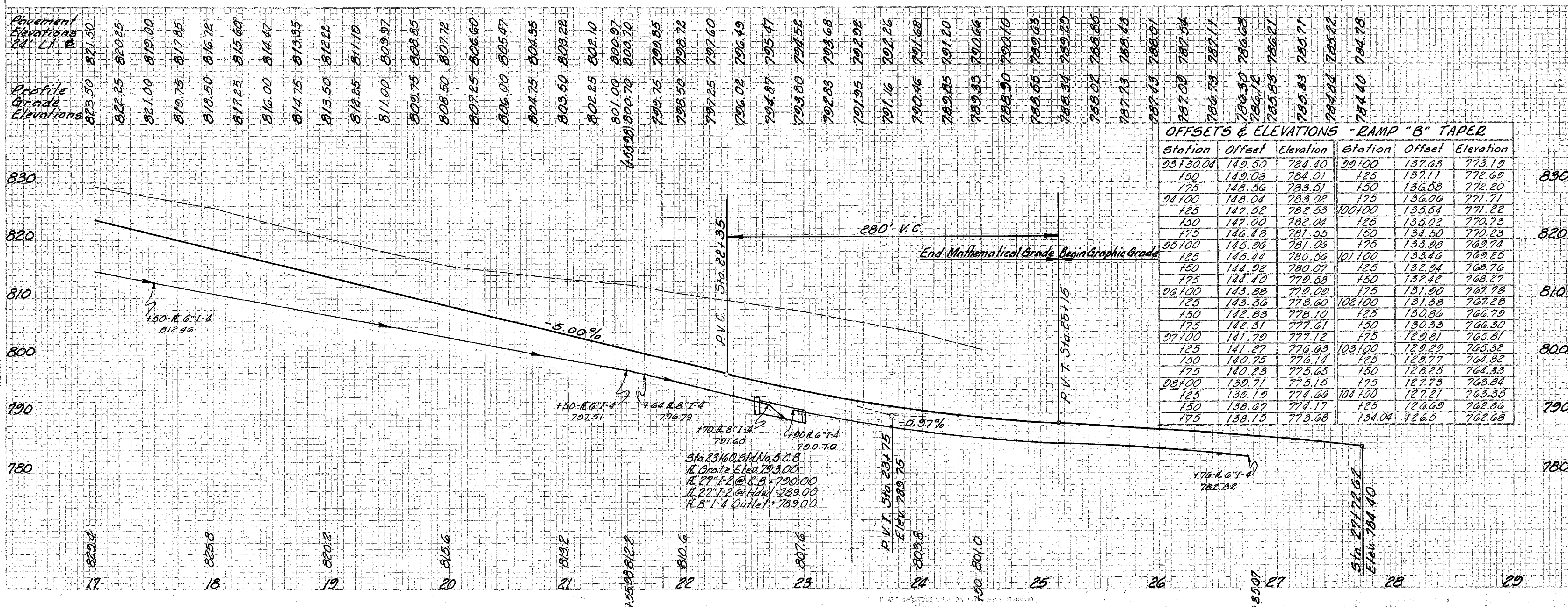
CUYAHOGA & LAKE COUNTIES
CUY-I-15.91
LAK-I-0.00

ROADWAY & PAVEMENT					
Ref. No.	Station		Side E	I-15 Guard Rail Dwg. No. 2A Lin. Ft.	I-12 Conc. Curb Spec. Lin. Ft.
	From	To			
1-R	17+00	19+03.84	LT.	192.01	
2-R	24+50	26+35.86	RT.	187.50	
1-P	22+53	26+35.07	LT.		437
Totals:				384.51	437

FINAL SURVEY PLATTED NOTE BOOK AREA, PROJECT, COUNTY, STATE, DATE, SHEET NO., SHEET TOTAL



CFN 1971807
SLM XX, 27"
SEE SHEET 297



Sta. No.	Side	Structure	Drainage		Notes
			Structure	Notes	
17+00	LT.	Underdrain	8" 6" C" 8"	1	
20+00	RT.	Underdrain	8" 6" C" 8"	1	
24+50	RT.	Underdrain	8" 6" C" 8"	1	
27+00	LT.	Underdrain	8" 6" C" 8"	1	
29+00	RT.	Underdrain	8" 6" C" 8"	1	
Totals:					5

REVISIONS:
 3-31-60 Grade Raise for 16'-4" Dr. CI.

MICHAEL BAKER JR., CONSULTING ENGINEERS
 ROCHESTER, PENNSYLVANIA

STATE OF OHIO
DEPARTMENT OF HIGHWAYS
 STATE HIGHWAY NO. 1
 C-42

EUCLID SPUR INTERCHANGE RAMP "B"
STA. 17+00 TO STA. 29+00

Designed	Drawn	Traced	Checked	Reviewed	Date	Revised
H.V.H.	A.H.	K.G.	L.I.			