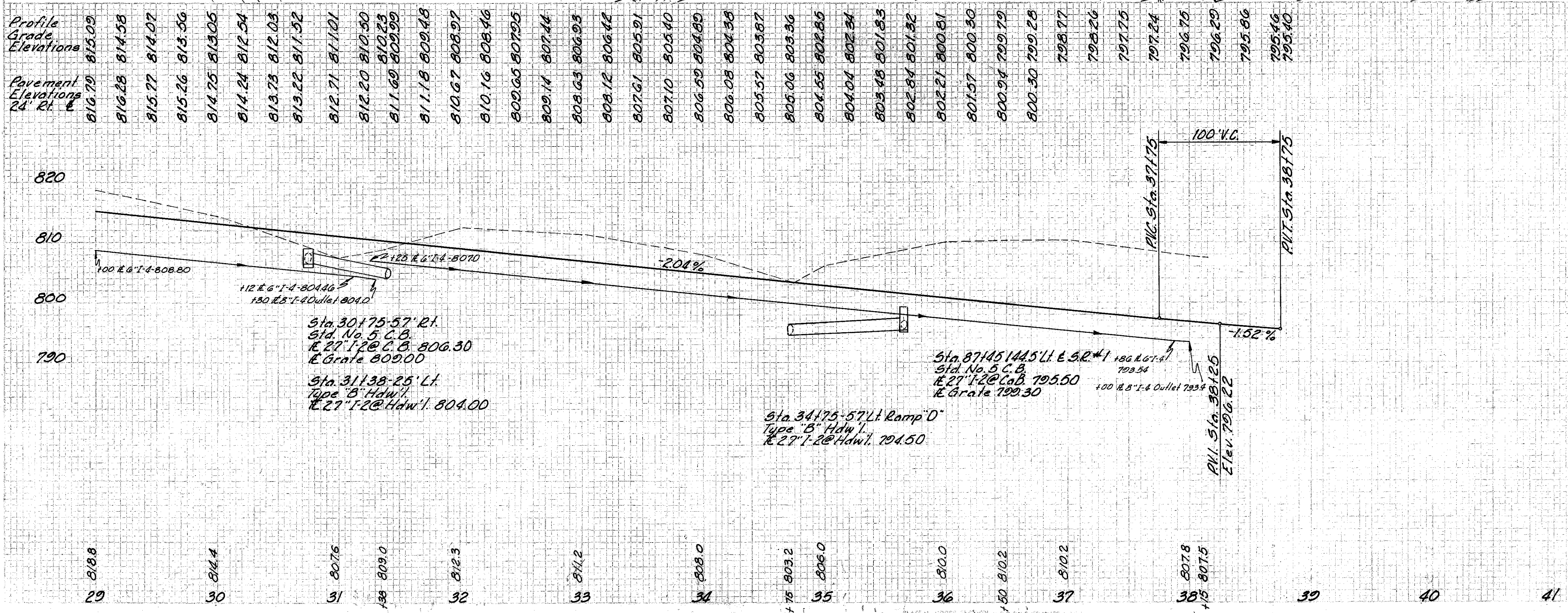
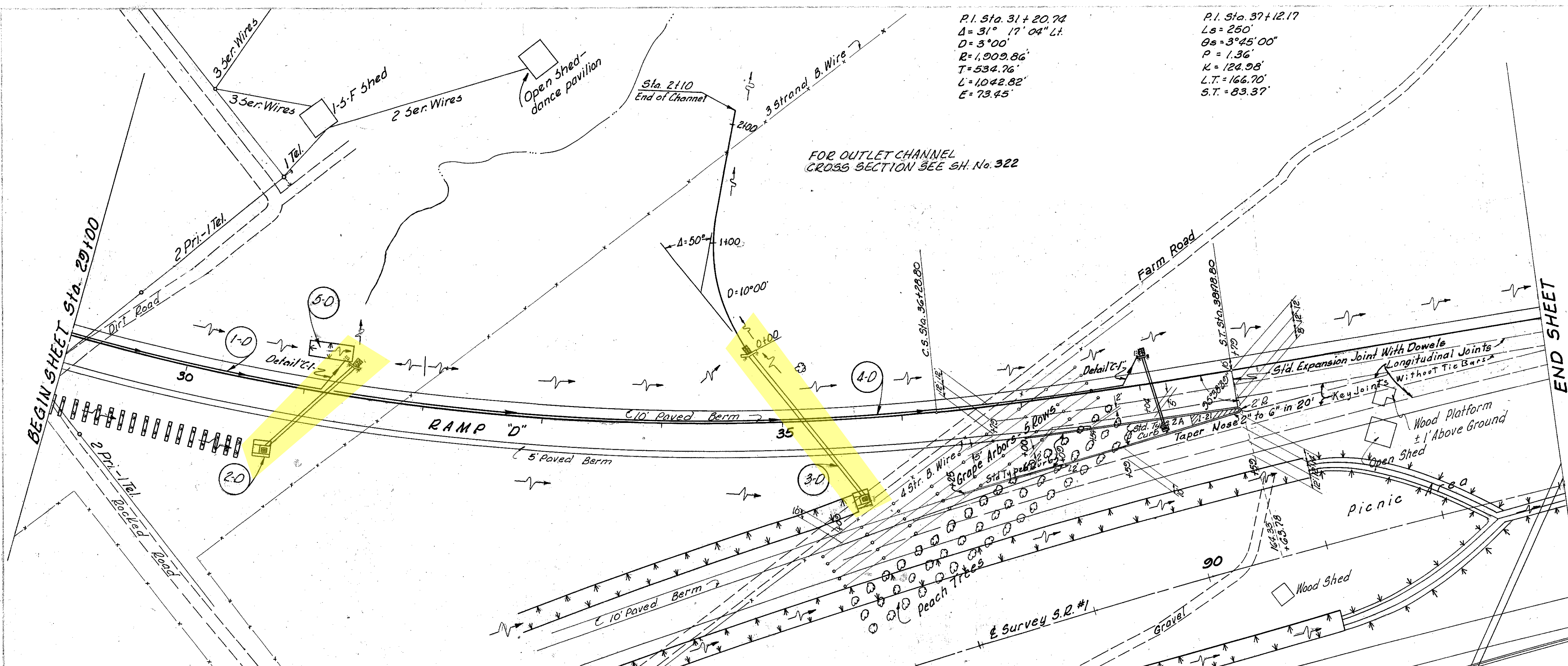


CUYAHOGA & LAKE COUNTIES
CUY-I-15.91
LAK-I-0.00

Ref. No.	Station		Side E	PAVEMENT		
	From	To		I-12 Conc. Curb	I-21 Conc. Med. Pt. Type 1	I-12 Conc. Curb Std. Type 2-A
1-P	38145	38170	Rt.	136		285
2-P	38137	38178	Rt.		23	
Totals:				136	23	285



Station	Side E	From		To	Lin. Ft.	Spec. Mat. (Vol./Sq. Ft.)	Excavation	Channel	Elevation	Cu. Yds.	Excavation for Structures	Cu. Yds.					
		From	To														
343 1-0		29+100	30+175	31+170	10	100					7						
321 2-0		30+175	31+175	31+175	10	100					7						
322 3-0		31+175	31+175	31+175	10	100					7						
343 4-0		31+175	31+175	31+175	10	100					7						
343 5-0		31+175	31+175	31+175	10	100					7						
Totals:												14	478	152	680	28	30

MICHAEL BAKER JR., CONSULTING ENGINEERS
 ROCHESTER, PENNSYLVANIA

STATE OF OHIO
DEPARTMENT OF HIGHWAYS
 STATE HIGHWAY NO. 1
 C-42

EUCLID SPUR INTERCHANGE RAMP "D"
STA. 29+00 TO STA. 41+00

Designed	Drawn	Traced	Checked	Reviewed	Date	Revised
H.V.	A.H.	K.G.	L.I.			