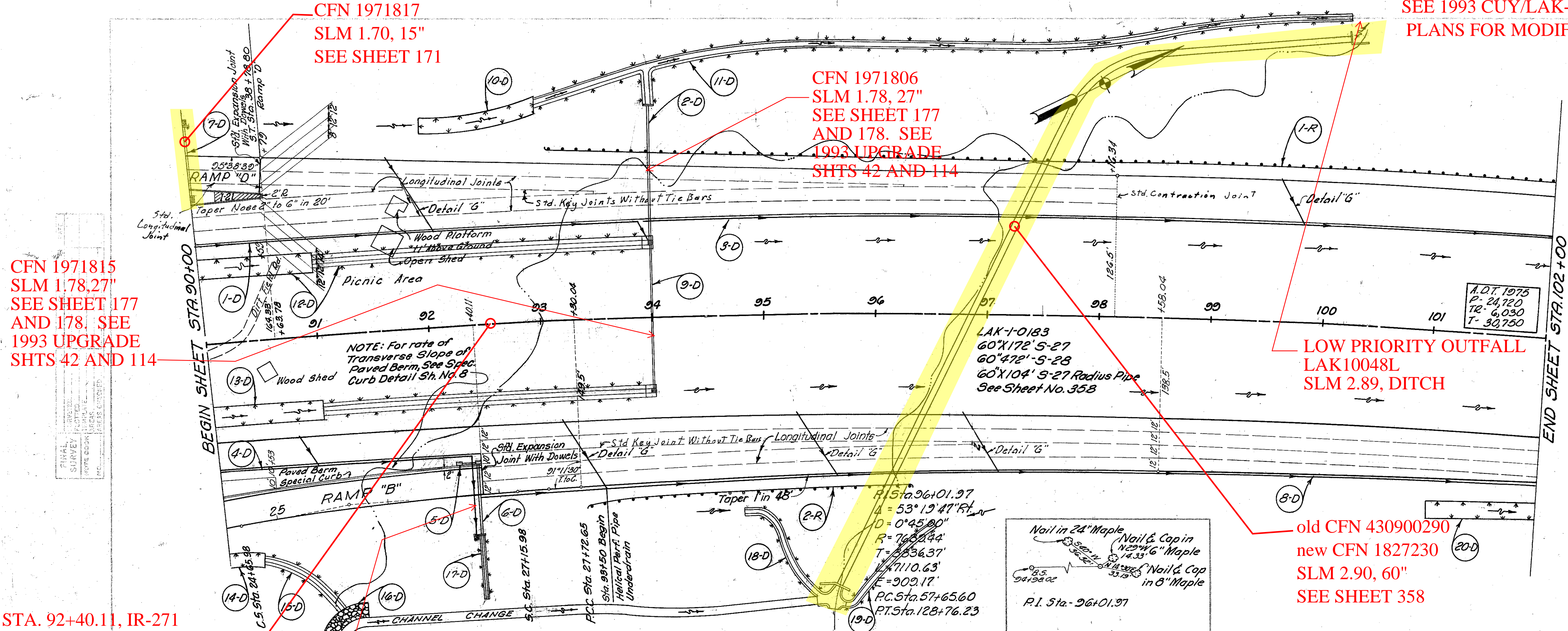


DIVISION	STATE	PROJECT	49
2	OHIO	1-1103 (88)	458

CUYAHOGA & LAKE COUNTIES
 CUY-I-15.91
 LAK-I-0.00



CFN 1971815
 SLM 1.78, 27"
 SEE SHEET 177
 AND 178. SEE
 1993 UPGRADE
 SHTS 42 AND 114

CFN 1971817
 SLM 1.70, 15"
 SEE SHEET 171

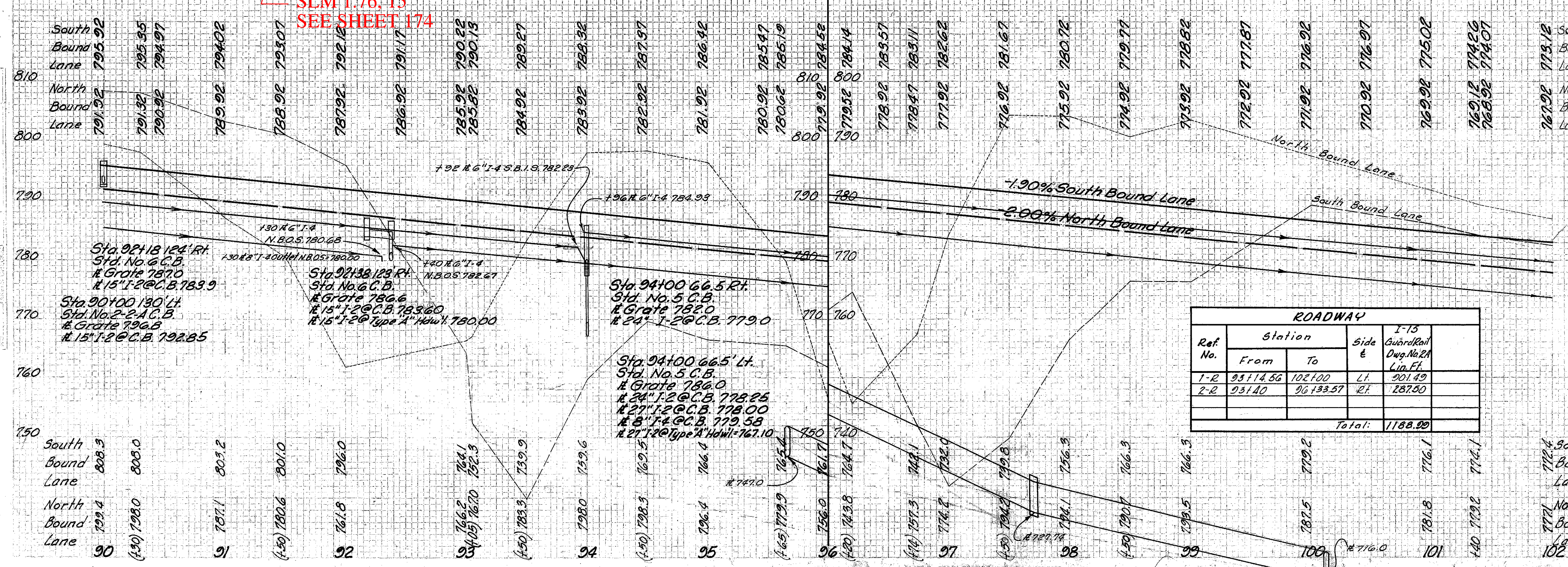
CFN 1971806
 SLM 1.78, 27"
 SEE SHEET 177
 AND 178. SEE
 1993 UPGRADE
 SHTS 42 AND 114

LOW PRIORITY OUTFALL
 LAK10048L
 SLM 2.89, DITCH

old CFN 430900290
 new CFN 1827230
 SLM 2.90, 60"
 SEE SHEET 358

STA. 92+40.11, IR-271
 (SLM 1.75)=IR-90 (SLM 2.76)

CFN 1971808
 SLM 1.76, 15"
 SEE SHEET 174



* If directed, these pipe runs shall be encased in Class "E" Concrete. Concrete, if required, shall be paid for at the unit price bid for Item 5-1.

See Sheet No.	Ref. No.	Station	Side	Structure	Elevation for		Class "F" Storm Sewer under Pavement or Approaches	Pipe Underdrain	Pipe	Specials	Catch Basins	Dumped Rock	Standard Protection	Type 1 Modified	No. of Plan	Sodding	Concrete for Structure	Reinforcing Steel	Drainage of Structures		
					Top	Bottom															
		90+00			795.92	795.92															
		91+00			794.02	794.02															
		92+00			792.12	792.12															
		93+00			790.22	790.22															
		94+00			788.32	788.32															
		95+00			786.42	786.42															
		96+00			784.52	784.52															
		97+00			782.62	782.62															
		98+00			780.72	780.72															
		99+00			778.82	778.82															
		100+00			776.92	776.92															
		101+00			775.02	775.02															
		102+00			773.12	773.12															

MICHAEL BAKER, JR., CONSULTING ENGINEERS
 ROCHESTER, PENNSYLVANIA

STATE OF OHIO
 DEPARTMENT OF HIGHWAYS
 STATE HIGHWAY NO. 1
 C-42
 PLAN AND PROFILE
 STA. 90+00 TO STA. 102+00

Designed	Drawn	Traced	Checked	Reviewed	Date	Revised
B.P.	A.H.	A.G.	L.I.			

PLAN & PROFILE STA. 90+00-STA. 102+00