

REPLACED UNDER
1993 CUY/LAK-271/90/
271X/90X-14.85/2.76
SHTS 42 AND 114
SLM 2.79, 27"
SEE SHEET 49

LOW PRIORITY OUTFALL
LAK10047L, DITCH
SLM 3.15

old CFN 430900309
new CFN 1856592
SLM 3.09, 36"
SEE SHEET 359

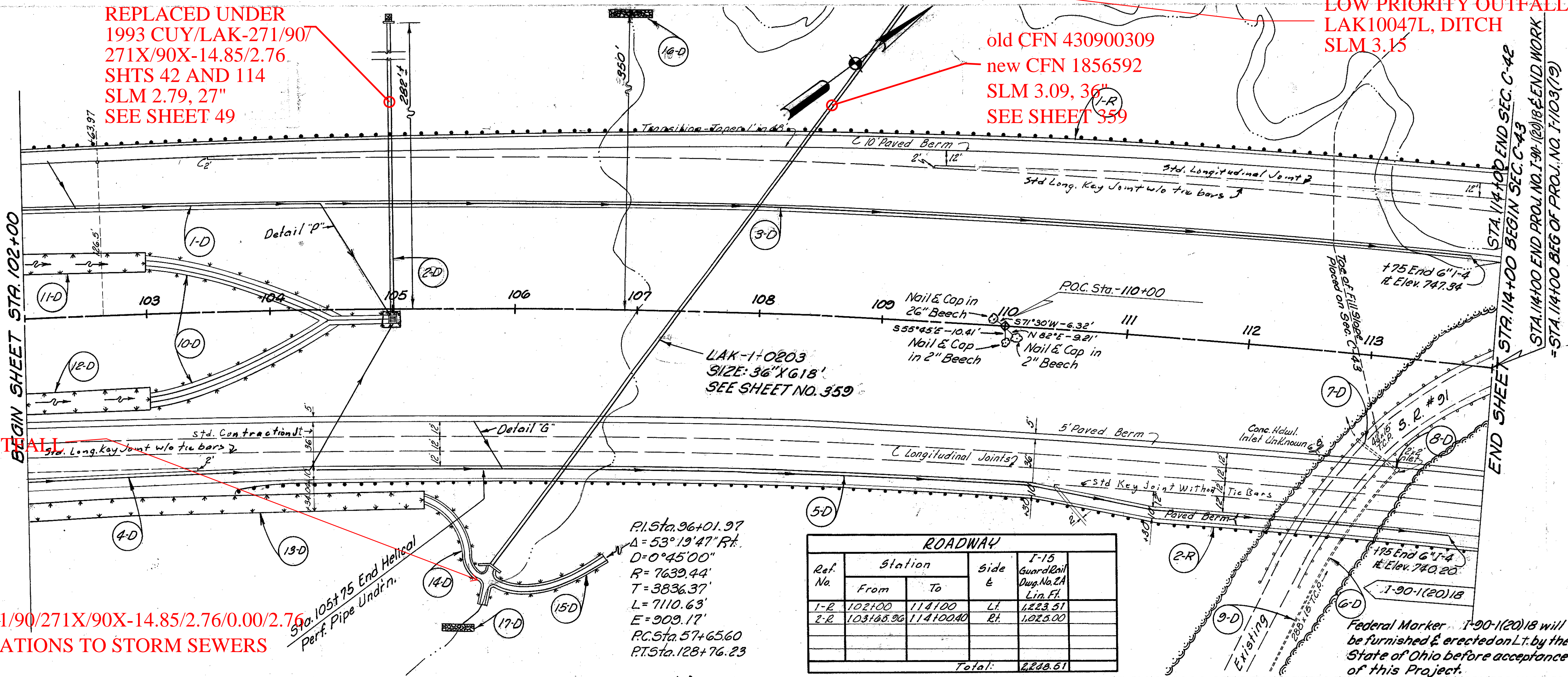
FED. RD. DIVISION	STATE	PROJECT
2	OHIO	I-1103 (18)

CUYAHOGA & LAKE COUNTIES
CUY-I-15.91
LAK-I-0.00

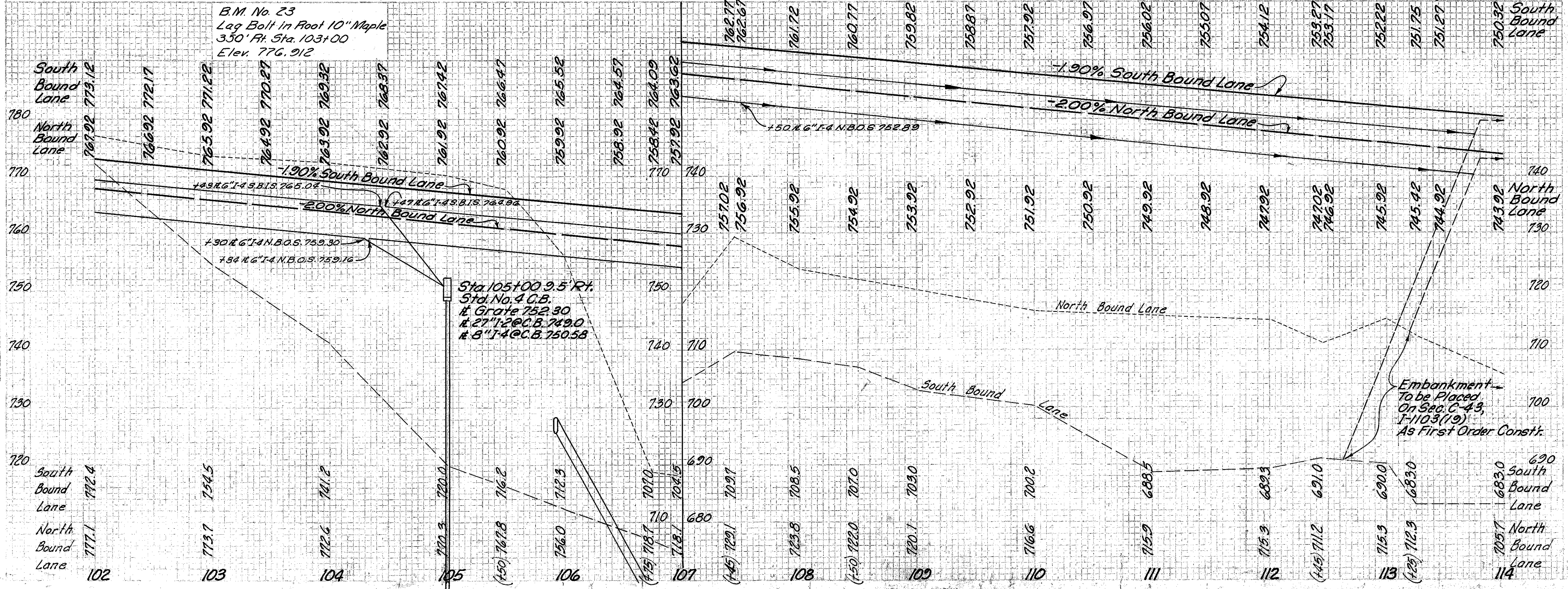
50
458

LOW PRIORITY OUTFALL
LAK10052R, DITCH
SLM 3.00

SEE 1993 CUY/LAK-271/90/271X/90X-14.85/2.76/0.00/2.76
PLANS FOR MODIFICATIONS TO STORM SEWERS



Ref. No.	Station From	Station To	Side &	I-15 Guardrail Dwg. No. 24	Lin. Ft.
1-2	102+00	114+00	Lt.	1223.51	
2-2	103+68.96	114+00.40	Rt.	1023.00	
Total:					2246.51



Drainage	Station	Side &	Structure	Material	Length	Quantity
I-2	102+00	Lt.	2	Pipe for Underdrain	6"	232
						234
I-3	103+00	Lt.	2	Pipe for Underdrain	6"	834
						834
I-4	104+00	Lt.	2	Pipe for Underdrain	6"	10
						10
I-5	105+00	Lt.	2	Pipe for Underdrain	6"	10
						10
I-6	106+00	Lt.	2	Pipe for Underdrain	6"	10
						10
I-7	107+00	Lt.	2	Pipe for Underdrain	6"	10
						10
I-8	108+00	Lt.	2	Pipe for Underdrain	6"	10
						10
I-9	109+00	Lt.	2	Pipe for Underdrain	6"	10
						10
I-10	110+00	Lt.	2	Pipe for Underdrain	6"	10
						10
I-11	111+00	Lt.	2	Pipe for Underdrain	6"	10
						10
I-12	112+00	Lt.	2	Pipe for Underdrain	6"	10
						10
I-13	113+00	Lt.	2	Pipe for Underdrain	6"	10
						10
I-14	114+00	Lt.	2	Pipe for Underdrain	6"	10
						10

MICHAEL BAKER, JR., CONSULTING ENGINEERS
ROCHESTER, PENNSYLVANIA

STATE OF OHIO
DEPARTMENT OF HIGHWAYS
STATE HIGHWAY NO. 1
C-42
PLAN AND PROFILE
STA. 102+00 TO STA. 114+00

Designed	Drawn	Traced	Checked	Reviewed	Date	Revised
B.P.	A.H.	A.G.	L.I.			

PLAN & PROFILE STA. 102+00-STA. 114+00