

CFN 1971995  
SLM 9.07, 27"  
SEE SHEET 77  
AND 78

FOR QUANTITIES AND  
DETAILS OF HEADWALL  
SEE SHEET NO. 223

SLM 9.09, 24"  
SEE SHEET 80

CFN 1971997  
SLM 9.13, 27"  
SEE SHEET 83  
EXTENDED AND REVISE  
2003 LAK-90/615-9.26/1.51  
SHTS 190 AND 200

SLM 9.08, 24"  
SEE SHEET 78

CFN 1971992  
SLM 9.09, 24"  
SEE SHEET 80

SLM 9.13, 15"  
SEE SHEET 83

CFN 1972016  
SLM 9.24, 18"  
SEE SHEET 20  
AND 83

CFN 1972000  
SLM 9.10, 21"  
SEE SHEET 78

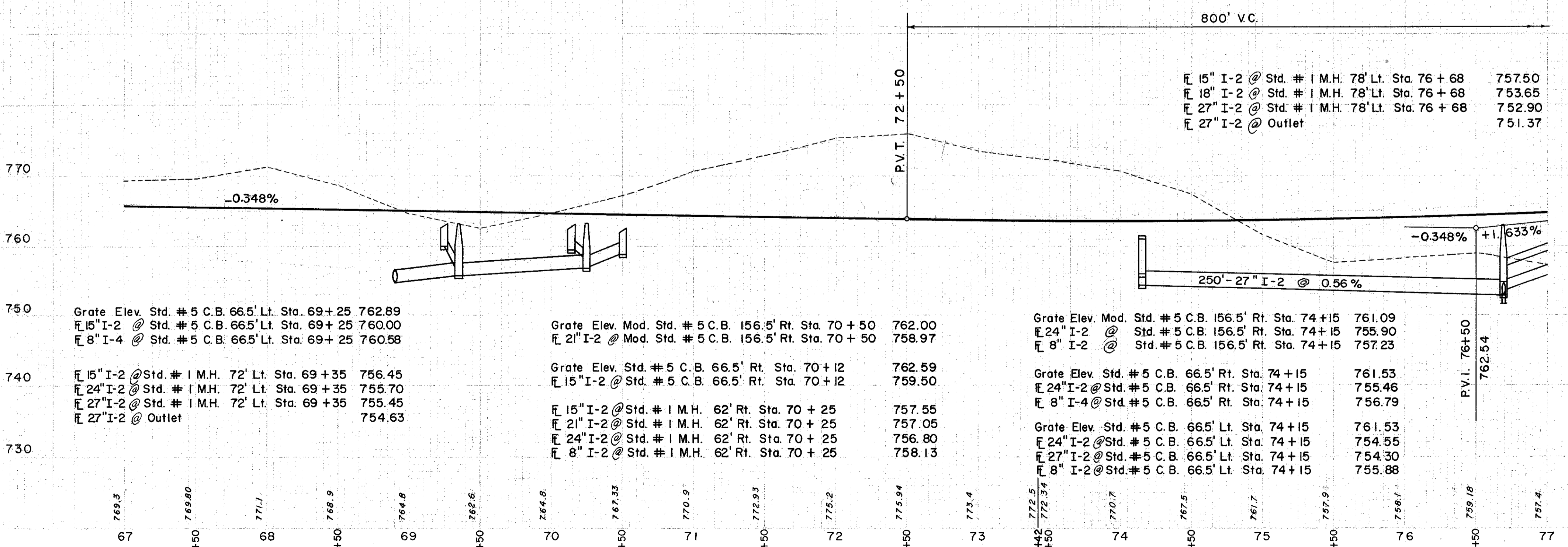
SLM 9.13, 27"  
SEE BELOW

NOTE: From Fence Line at Sta. 64+70 to Sta. 69+50 a 4" Field Tile Draining to the North.

NOTE: From Fence to Draw at Sta. 75+60 a 4" Field Tile Draining to the North.

NOTE: Between Draws at Right Angles to Approx. to 4" T.C. Tile 40' Apart

765.84	765.67	765.49	765.32	765.15	764.97	764.80	764.62	764.45	764.28	764.10	763.93	763.85	763.78	763.74	763.70	763.68	763.69	763.70	763.73	763.78	763.83	763.91	763.99	764.11	764.23	764.36	764.52	764.69	764.88
--------	--------	--------	--------	--------	--------	--------	--------	--------	--------	--------	--------	--------	--------	--------	--------	--------	--------	--------	--------	--------	--------	--------	--------	--------	--------	--------	--------	--------	--------



Grate Elev. Std. # 5 C.B. 66.5' Lt. Sta. 69+25	762.89
15" I-2 @ Std. # 5 C.B. 66.5' Lt. Sta. 69+25	760.00
8" I-4 @ Std. # 5 C.B. 66.5' Lt. Sta. 69+25	760.58
15" I-2 @ Std. # 1 M.H. 72' Lt. Sta. 69+35	756.45
24" I-2 @ Std. # 1 M.H. 72' Lt. Sta. 69+35	755.70
27" I-2 @ Std. # 1 M.H. 72' Lt. Sta. 69+35	755.45
27" I-2 @ Outlet	754.63

Grate Elev. Mod. Std. # 5 C.B. 156.5' Rt. Sta. 70+50	762.00
21" I-2 @ Mod. Std. # 5 C.B. 156.5' Rt. Sta. 70+50	758.97
Grate Elev. Std. # 5 C.B. 66.5' Rt. Sta. 70+12	762.59
15" I-2 @ Std. # 5 C.B. 66.5' Rt. Sta. 70+12	759.50
15" I-2 @ Std. # 1 M.H. 62' Rt. Sta. 70+25	757.55
21" I-2 @ Std. # 1 M.H. 62' Rt. Sta. 70+25	757.05
24" I-2 @ Std. # 1 M.H. 62' Rt. Sta. 70+25	756.80
8" I-2 @ Std. # 1 M.H. 62' Rt. Sta. 70+25	758.13

Grate Elev. Mod. Std. # 5 C.B. 156.5' Rt. Sta. 74+15	761.09
24" I-2 @ Std. # 5 C.B. 156.5' Rt. Sta. 74+15	755.90
8" I-2 @ Std. # 5 C.B. 156.5' Rt. Sta. 74+15	757.23
Grate Elev. Std. # 5 C.B. 66.5' Rt. Sta. 74+15	761.53
24" I-2 @ Std. # 5 C.B. 66.5' Rt. Sta. 74+15	754.55
27" I-2 @ Std. # 5 C.B. 66.5' Lt. Sta. 74+15	754.30
8" I-2 @ Std. # 5 C.B. 66.5' Lt. Sta. 74+15	755.88

REF. NO.	STATION	ROADWAY		DRAINAGE		L.F.	C.Y.	LBS.	C.Y.
		FROM	TO	CLASS	STRUCT.				
I-D	67+00	77+00	LT.	10	10	10	0.3		
2-D	67+00	77+00	LT.	48	48	48			
3-D	67+00	77+00	RT.	162	162	162			
4-D	67+00	77+00	RT.	158	158	158			
5-D	67+15	70+25	LT.	96	102	20			
7-D	67+00	70+50	RT.	88	82	30			
8-D	75+50	76+65	LT.						
9-D	74+15	77+16	LT.						
10-D	74+15	77+00	RT.						
11-D	76+65	77+00	RT.						

REF. NO.	STATION	ROADWAY		L.F.	C.Y.
		FROM	TO		
I-R	76+00	77+00	LT.	10	10

Excavation	58,375 C.Y.
Embankment	11,029 C.Y.
Subgrade	13,014 C.Y.