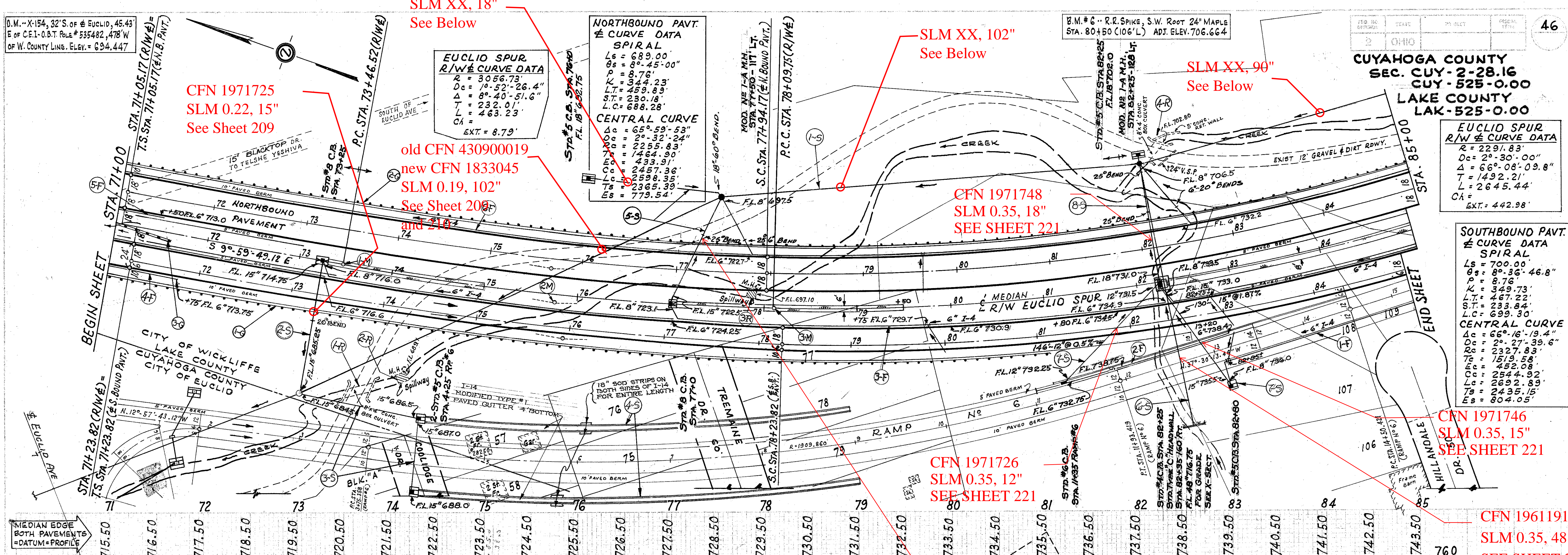


D.M. - X-154, 32' S. of E. of Euclid, 45.43
 E. of C.E.I.-O.B.T. Pole # 535482, 478' W
 of W. County Line. Elev. = 694.447

CUYAHOGA COUNTY
 SEC. CUY-2-28.16
 CUY-525-0.00
 LAKE COUNTY
 LAK-525-0.00



EUCLID SPUR R/W CURVE DATA

R = 3066.73'
 Dc = 19° 52' 26.4"
 Δ = 8° 40' 51.6"
 T = 232.01'
 L = 463.23'
 CA = 8.79'

NORTHBOUND PAVT. CURVE DATA

SPIRAL
 Ls = 689.00'
 Os = 8° 45' 00"
 P = 8.76'
 K = 924.23'
 LT = 458.83'
 ST = 230.18'
 L.C. = 688.28'

CENTRAL CURVE
 Δc = 65° 59' 53"
 Oc = 2° 32' 24"
 Tc = 2255.83'
 Lc = 1464.90'
 Ec = 433.91'
 Cc = 2457.36'
 Lc = 2598.35'
 Ts = 2365.39'
 Es = 779.54'

EUCLID SPUR R/W CURVE DATA

R = 2291.83'
 Dc = 2° 30' 00"
 Δ = 66° 08' 09.8"
 T = 1492.21'
 L = 2645.44'
 CA = 442.98'

SOUTHBOUND PAVT. CURVE DATA

SPIRAL
 Ls = 700.00'
 Os = 8° 36' 46.8"
 P = 8.76'
 K = 349.73'
 LT = 467.22'
 ST = 233.84'
 L.C. = 699.30'

CENTRAL CURVE
 Δc = 66° 16' 19.4"
 Oc = 2° 27' 39.6"
 Tc = 2327.83'
 Lc = 1519.58'
 Ec = 452.08'
 Cc = 2544.92'
 Lc = 2692.89'
 Ts = 2435.15'
 Es = 804.05'

6" UNDERDRAINS

REF. NO.	STATION	SIDE	I-4 LIN. FT.					I-5 EACH			
			SHALLOW	DEEP	M. 6.4 H.	8" PIPE OUTLET	6" 60° WYE	6" 90° BEND	6" 60° BEND	6"x6"x6" TEE	6" 20° ELBOW
1-F	13+07	R		250		10					
2-F	11+38	L		182		30					
3-F	71+00	L	1264		240		2		3		
4-F	71+00	R	75								
5-F	71+00	L	50								
6-F	71+00	L	1565			20			2	1	2
TOTALS:			2954	250	422	60	3	1	5	1	2

I-15 GUARD RAIL

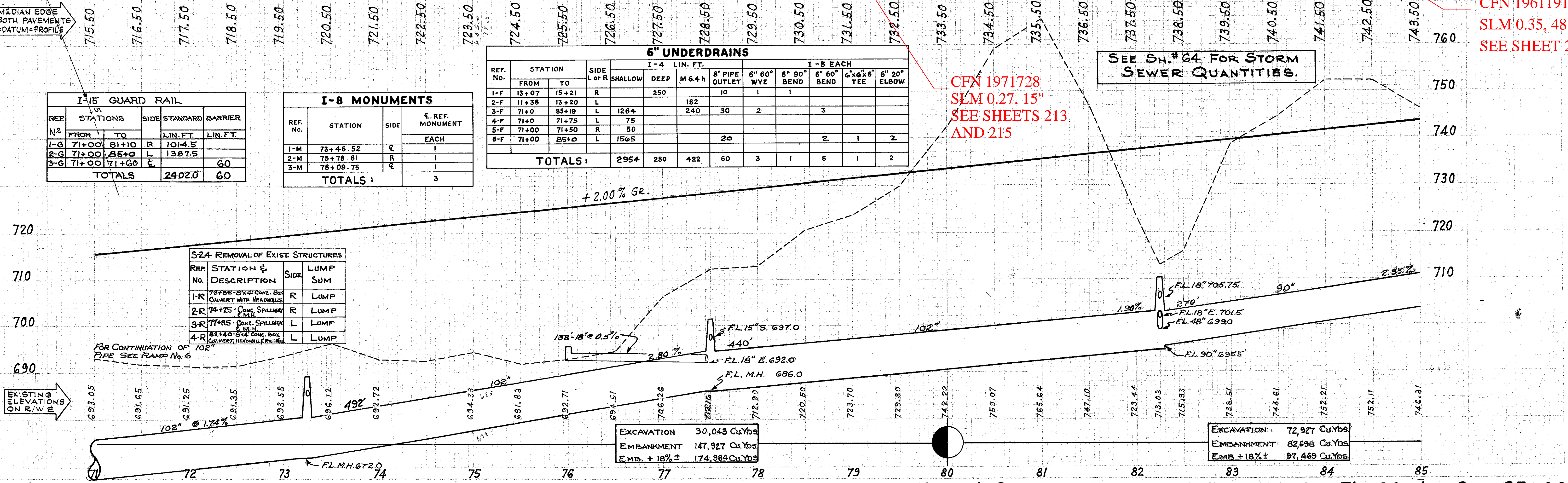
REF. NO.	STATIONS	SIDE	STANDARD	BARRIER	LIN. FT.	LIN. FT.
1-G	71+00	R	1014.5			
2-G	71+00	L	1387.5			
3-G	71+00	L		60		
TOTALS					2402.0	60

I-8 MONUMENTS

REF. NO.	STATION	SIDE	€ REF. MONUMENT	
1-M	73+46.52	€	EACH	
2-M	75+78.61	R	I	
3-M	78+09.75	€	I	
TOTALS:				3

S&A REMOVAL OF EXIST. STRUCTURES

REF. NO.	STATION & DESCRIPTION	SIDE	LUMP SUM
1-R	73+66 - 8'x4' CONC. BOX CULVERT WITH HEADWALL	R	LUMP
2-R	74+25 - CONC. SPILLWAY	R	LUMP
3-R	77+85 - CONC. SPILLWAY	L	LUMP
4-R	82+40 - 8'x4' CONC. BOX CULVERT, HEADWALL, RETAIN.	L	LUMP



PLAN & PROFILE .. EUCLID SPUR .. STA. 71+00 to STA. 85+00