

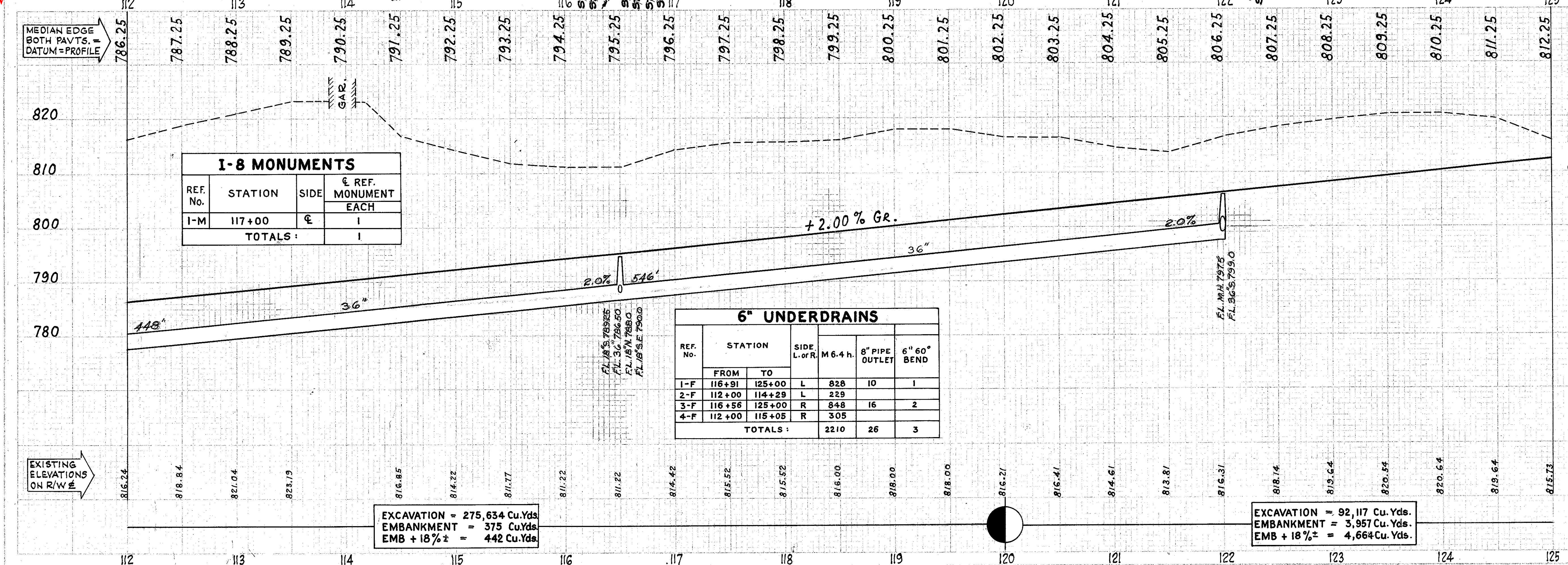
B.M. #11 - Bolt W. Side 30" Elm, Sta. 113+30, 170' Left. Adj. Elev. = 815.828
 B.M. #12 - Spike W. Side 30" Oak, Sta. 118+75 195' Left. Adj. Elev. = 811.427
 B.M. #13 - Spike S. Side 18" Oak, Sta. 124+35 270' Left. Adj. Elev. = 816.964

old CFN 430900090
 new CFN 1971734
 SLM 0.89, 36"
 SEE BELOW

SLM XX, 18"
 See Sheet 253
 AND 254

CFN 1971744
 SLM 1.02, 18"
 SEE SHEET 253
 SLM 1.08

SLM XX, 36"
 See Sheet 258



I-8 MONUMENTS			
REF. No.	STATION	SIDE	€ REF. MONUMENT EACH
I-M	117+00	€	1
TOTALS:			1

6" UNDERDRAINS						
REF. No.	STATION		SIDE L. or R.	M 6.4 h.	8" PIPE OUTLET	6" 60" BEND
	FROM	TO				
1-F	116+91	125+00	L	828	10	1
2-F	112+00	114+29	L	229		
3-F	116+56	125+00	R	848	16	2
4-F	112+00	115+05	R	305		
TOTALS:				2210	26	3

EXCAVATION = 275,634 Cu.Yds.
 EMBANKMENT = 375 Cu.Yds.
 EMB + 18% ± = 442 Cu.Yds.

EXCAVATION = 92,117 Cu.Yds.
 EMBANKMENT = 3,957 Cu.Yds.
 EMB + 18% ± = 4,664 Cu.Yds.

REF. No.	STATION	SIDE	M 6.4 CLASS UNDER PAV'T.		M 6.4 CLASS UNDER PAV'T.		M 6.4 CLASS UNDER PAV'T.		M 6.4 CLASS UNDER PAV'T.		M 6.4 CLASS UNDER PAV'T.		M 6.4 CLASS UNDER PAV'T.		M 6.4 CLASS UNDER PAV'T.		M 6.4 CLASS UNDER PAV'T.	
			FROM	TO	FROM	TO	FROM	TO	FROM	TO	FROM	TO	FROM	TO	FROM	TO	FROM	TO
1-S	112+00	R	18"	18"	18"	18"	18"	18"	18"	18"	18"	18"	18"	18"	18"	18"	18"	18"
2-S	116+50	R	18"	18"	18"	18"	18"	18"	18"	18"	18"	18"	18"	18"	18"	18"	18"	18"
3-S	116+50	R	18"	18"	18"	18"	18"	18"	18"	18"	18"	18"	18"	18"	18"	18"	18"	18"
4-S	112+00	R	18"	18"	18"	18"	18"	18"	18"	18"	18"	18"	18"	18"	18"	18"	18"	18"
TOTALS:			134	66	82	25	318	130	64	546	2	2	1	2	975	11.3	565	19