

FWY CURVE NO. 4  
 E DATA  
 D=0°-28'-00"  
 Δ=06°-58'-18"  
 R=12277.58'  
 T=747.88'  
 L=1493.93'  
 LC=1493.00'  
 E=22.76'

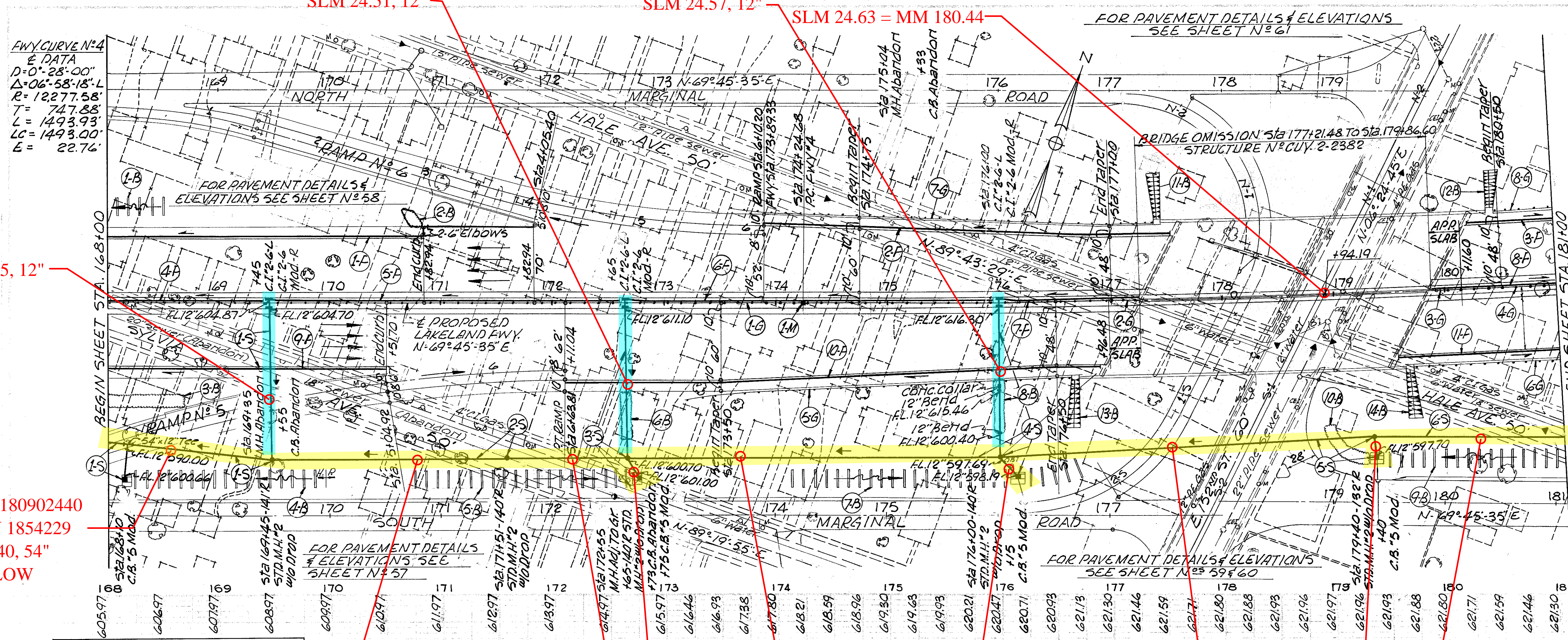
STATE	PROJECT	FISCAL YEAR
OHIO	I-29 (12)	1958

CUYAHOGA COUNTY  
 CUY - 2 - 22.97

ITEM No.	STATION	SIDE	TYPE
1-M	174+24.68	E	1
TOTAL			1

ITEM No.	STATION	SIDE	LENGTH	WIDTH	SODDING	SODDING FOR SPECIAL BERM & SLOPE PROTECTION
1-B	168+00	L	16+57	16'x15'	16	
2-B	170+78	L	18+10	18'x12'	20	
3-B	168+00	R	16+87	16'x15'	45	
4-B	168+27	R	16+58	16'x15'	53	
5-B	170+68	R	17+58	17'x15'	50	
6-B	172+65	R	17+10	17'x15'	66	
7-B	174+08	R	17+72	17'x15'	56	
8-B	176+00	R	18+10	18'x15'	40	
9-B	179+57	R	18+10	18'x15'	68	
10-B	178+91	R	17+33	17'x12'		
11-B	STRUCTURE OVER E. 152 <sup>ND</sup> ST.					48
12-B	NW ABUTMENT					27
13-B	SW ABUTMENT					48
14-B	SE ABUTMENT					48
TOTAL THIS SHEET					505	191

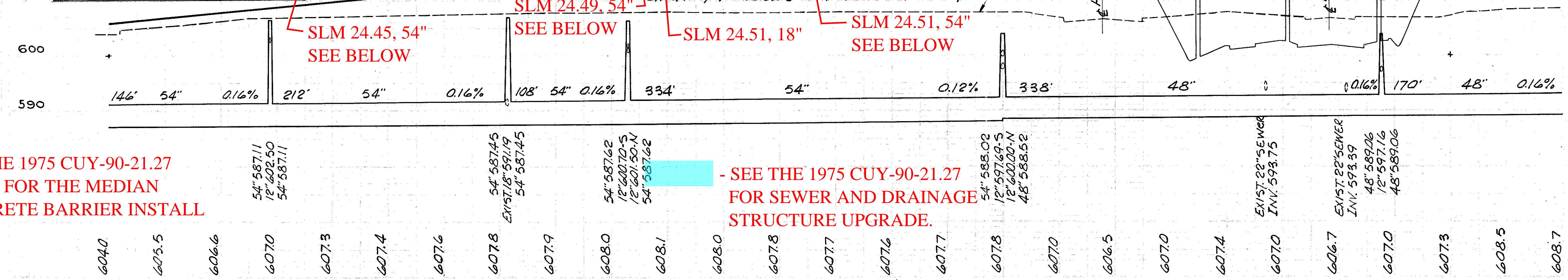
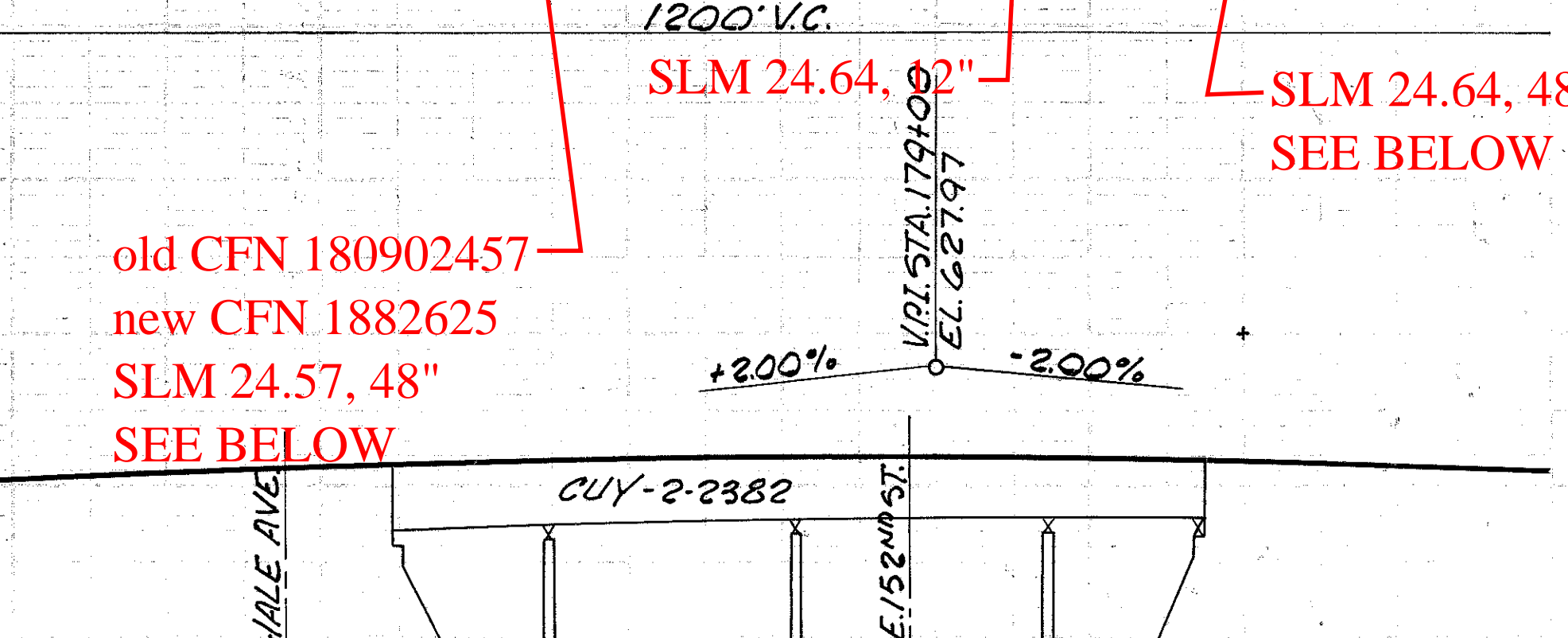
ITEM No.	STATION	SIDE	LENGTH	WIDTH	SODDING	SODDING FOR SPECIAL BERM & SLOPE PROTECTION
1-S	168+00	R	16+55	16'x15'	16	
2-S	169+45	R	17+57	17'x15'	20	
3-S	171+57	R	17+75	17'x15'	30	
4-S	172+65	R	17+15	17'x15'	34	
5-S	176+00	R	17+40	17'x15'	68	
6-S	179+40	R	18+10	18'x15'		
TOTALS					86	18



ITEM No.	STATION	SIDE	LENGTH	WIDTH	SODDING	SODDING FOR SPECIAL BERM & SLOPE PROTECTION
1-F	168+00	L	17+83	16'x15'	2	
2-F	173+89	L	17+54	16'x15'	10	
3-F	180+23	L	18+00	18'x12'	77	
4-F	168+00	L	16+43	16'x15'	10	
5-F	169+46	L	17+63	17'x15'	10	
6-F	172+66	L	17+98	17'x15'	10	
7-F	176+01	L	17+25	17'x15'	10	
8-F	179+90	L	18+10	18'x15'	10	
9-F	168+00	R	17+52	17'x15'	252	
10-F	172+11	R	17+90	17'x15'	479	
11-F	179+55	R	18+10	18'x15'	145	
TOTALS					2602	30

ITEM No.	STATION	SIDE	LENGTH	WIDTH	SODDING	SODDING FOR SPECIAL BERM & SLOPE PROTECTION
1-G	168+00	E	177+10.70	17'x15'	910.70	
2-G	177+10.70	E	177+21.48	17'x15'	10.78	
3-G	179+06.60	E	180+00.90	18'x12'	14.30	
4-G	180+00.90	E	181+00	18'x12'	99.10	
5-G	173+19.54	R	176+69.54	17'x15'	350.00	
6-G	179+62.02	R	181+00	18'x15'	137.98	
7-G	173+38.54	R	177+46.04	17'x15'	387.50	
8-G	180+38.32	L	181+00	18'x15'	61.48	
TOTAL THIS SHEET					1034.88	936.96

ITEM No.	STATION	SIDE	LENGTH	WIDTH	SODDING	SODDING FOR SPECIAL BERM & SLOPE PROTECTION
1-H	168+00	L	17+83	16'x15'	2	
2-H	173+89	L	17+54	16'x15'	10	
3-H	180+23	L	18+00	18'x12'	77	
4-H	168+00	R	16+43	16'x15'	10	
5-H	169+46	R	17+63	17'x15'	10	
6-H	172+66	R	17+98	17'x15'	10	
7-H	176+01	R	17+25	17'x15'	10	
8-H	179+90	R	18+10	18'x15'	10	
9-H	168+00	L	17+52	17'x15'	252	
10-H	172+11	L	17+90	17'x15'	479	
11-H	179+55	L	18+10	18'x15'	145	
TOTALS					2602	30



SEE THE 1975 CUY-90-21.27  
 PLANS FOR THE MEDIAN  
 CONCRETE BARRIER INSTALL

- SEE THE 1975 CUY-90-21.27  
 FOR SEWER AND DRAINAGE  
 STRUCTURE UPGRADE.