

Ref. No	Station		Side &	I-15	I-12
	From	To		Grd. Rail Dup. 2-A Lin. Ft.	Conc. Curb Special Lin. Ft.
1-R	114+00	81+22.5	LT.	425.0	
2-R	9100.64	13125	RT.	325.0	
3-R	12123.34	13150	LT.	125.0	
1-P	4163.97	11114	RT.		654.00
Totals				875.0	654.00

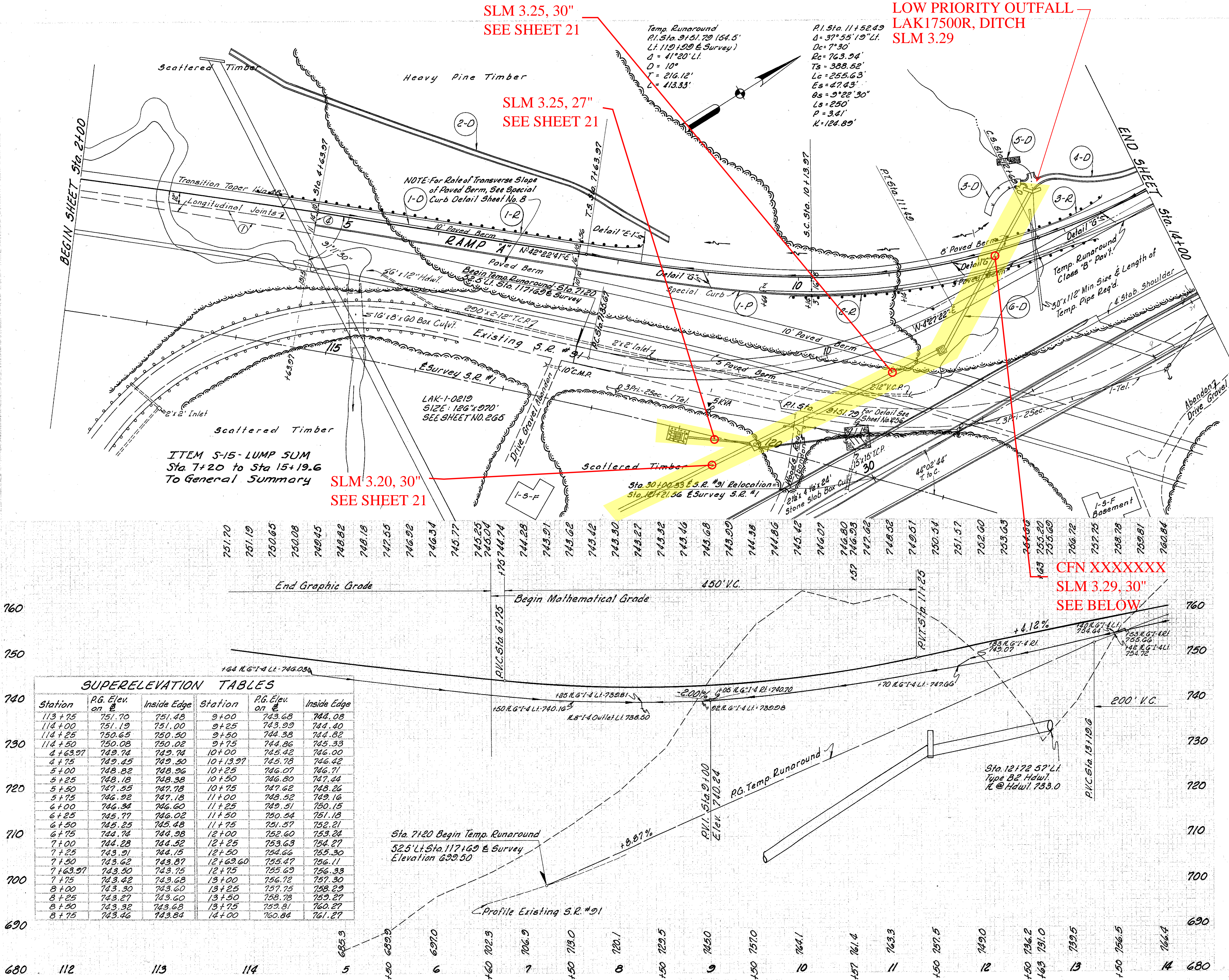
- ~ LEGEND ~
- ① Standard Longitudinal Joint
  - ② Standard Key Joint Without Tie Bars
  - ③ Expansion Joint Without Dowels (Loc. on radial lines)
  - ④ Expansion Joint With Dowels

Station	From	To	Side	Excavation	Underdrain	Pipe Culverts	Underdrain	Excavation	Station
1-1	114+00	81+22.5	LT.						1-1
1-2	9100.64	13125	RT.						1-2
1-3	12123.34	13150	LT.						1-3
1-4	4163.97	11114	RT.						1-4
Totals									

MICHAEL BAKER, JR., CONSULTING ENGINEERS  
ROCHESTER, PENNSYLVANIA

STATE OF OHIO  
DEPARTMENT OF HIGHWAYS  
STATE HIGHWAY NO. 1  
C-43  
S.R. NO. 91 INTERCHANGE RAMP "A"  
STA. 2+00 TO STA. 14+00

Designed	Drawn	Traced	Checked	Reviewed	Date	Revised
H.V.	J.S.H.	A.L.H.	B.P.			



SLM 3.25, 30"  
SEE SHEET 21

LOW PRIORITY OUTFALL  
LAK17500R, DITCH  
SLM 3.29

SLM 3.25, 27"  
SEE SHEET 21

SLM 3.20, 30"  
SEE SHEET 21

CFN XXXXXXX  
SLM 3.29, 30"  
SEE BELOW

Station	R.G. Elev. on E	Inside Edge	Station	R.G. Elev. on E	Inside Edge
113+75	751.70	751.48	9+00	743.68	744.08
114+00	751.19	751.00	9+25	743.99	744.40
114+25	750.65	750.50	9+50	744.38	744.82
114+50	750.08	750.02	9+75	744.86	745.33
4+63.97	749.74	749.74	10+00	745.42	746.00
4+75	749.45	749.50	10+13.97	745.78	746.42
5+00	748.82	748.96	10+25	746.07	746.71
5+25	748.18	748.38	10+50	746.80	747.44
5+50	747.55	747.78	10+75	747.62	748.26
5+75	746.92	747.18	11+00	748.52	749.16
6+00	746.34	746.60	11+25	749.51	750.15
6+25	745.77	746.02	11+50	750.54	751.18
6+50	745.25	745.48	11+75	751.57	752.21
6+75	744.74	744.98	12+00	752.60	753.24
7+00	744.28	744.52	12+25	753.63	754.27
7+25	743.91	744.15	12+50	754.66	755.30
7+50	743.62	743.87	12+63.60	755.47	756.11
7+63.97	743.50	743.75	12+75	755.69	756.33
7+75	743.42	743.68	13+00	756.72	757.30
8+00	743.30	743.60	13+25	757.75	758.29
8+25	743.27	743.60	13+50	758.78	759.27
8+50	743.32	743.68	13+75	759.81	760.27
8+75	743.46	743.84	14+00	760.84	761.27