

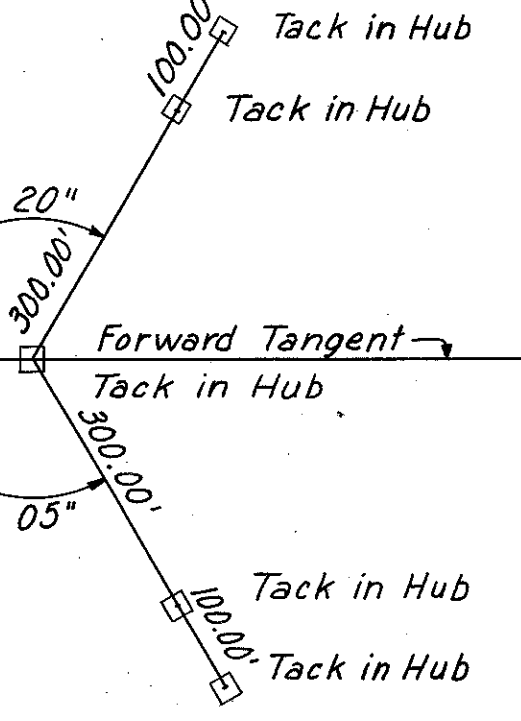
FED. RD. DIVISION	STATE	PROJECT
2	OHIO	

CUYAHOGA COUNTY
 CUY-1-2.20

23R
 313

CURVE DATA
 P.I. Sta. 441+96.64
 $\Delta = 8^{\circ}39'28''$
 $D = 0^{\circ}28'00''$
 $R = 12,277.67'$
 $T = 929.38'$
 $L = 1855.23'$
 $E = 35.07'$

REFERENCE POINT
 P.T. Sta. 451+22.49



BENCH MARK 133
 R.R. Spike 10" Hickory Tree
 165' Rt. Sta. 459+38
 Elev. 1202.533

BENCH MARK 133-A
 Lag Bolt W. Root 8" Wild Cherry
 393' Lt. Sta. 459+75
 Elev. 1213.056

PLAN

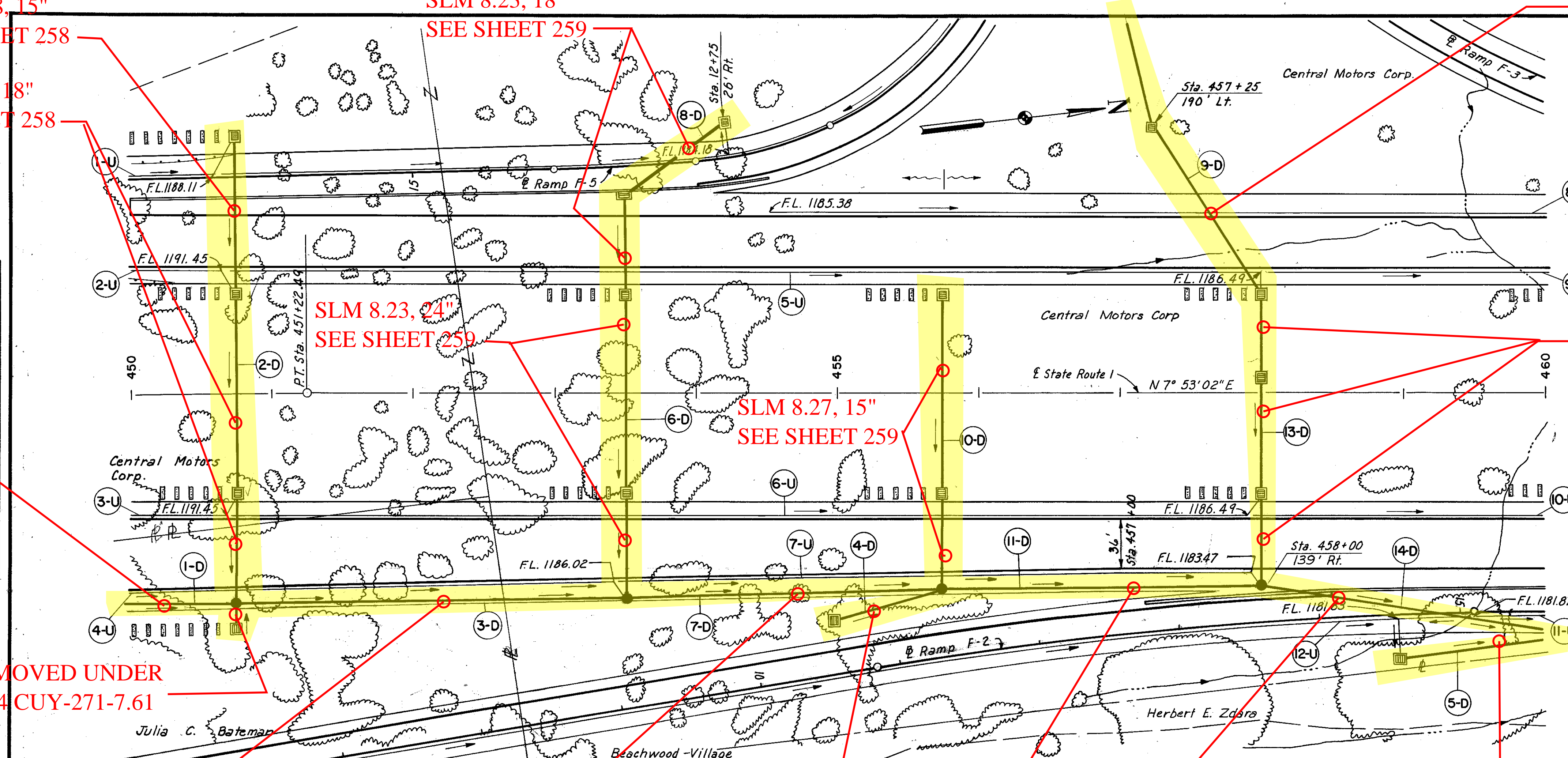
DATE	BY
12-11-88	H.A.
DATE	BY
12-28-89	H.A.

NOTE: SURVEYED, ALIGNED, AND CHECKED BY: H.A. DATE: 12-28-89. RT OF WAY CHECKED BY: H.A. DATE: 12-28-89.

PROFILE

DATE	BY
12-11-88	H.A.
DATE	BY
12-28-89	H.A.

NOTE: SURVEYED, ALIGNED, AND CHECKED BY: H.A. DATE: 12-28-89. STRUCTURE NOTATIONS: CHFD.



SLM 8.32, 24" SEE SHEET 262

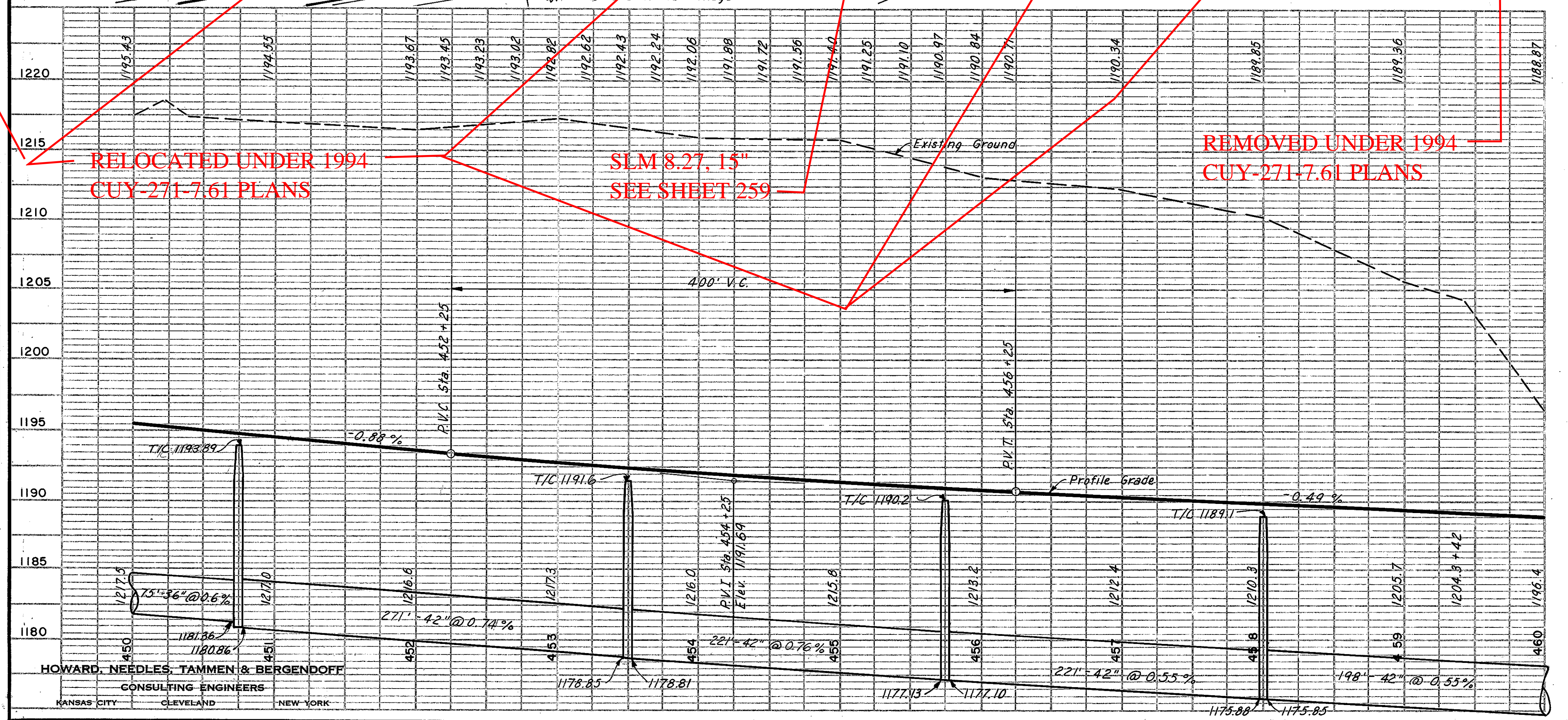
SLM 8.27, 15" SEE SHEET 259

SLM 8.23, 24" SEE SHEET 259

REMOVED UNDER 1994 CUY-271-7.61

REF. NO.	STATION	SIDE	DRAINAGE											
			I-2				I-8							
			Cl. "B" St. Sew. 15"	Cl. "B" St. Sew. 42"	Cl. "B" St. Sew. 15" Und. Pnt.	Cl. "B" St. Sew. 18" Und. Pnt.	Cl. "B" St. Sew. 24" Und. Pnt.	Cl. "B" St. Sew. 36" Und. Pnt.	Std. No. 1-3 C.B.	Std. No. 5 C.B.	Std. No. 6 C.B.	Std. No. 2 M.H. w/o Drop	Sodding No. 8 C.B.	
	From To		Lin. Ft.				Each				Sq. Yds. Each			
1-D	450+00 450+75	Rt.			75									
2-D	450+75 450+75		13			110	218				4		1	
3-D	450+75 453+50	Rt.		271									91	
4-D	455+00 455+75	Rt.	74							1				
5-D	453+50 460+00	Rt.	98				69	212			2	1	1	
6-D	453+50 453+50												24	
7-D	453+50 455+75	Rt.		221										
8-D	42+75 F-5 453+50	Lt.					82			1				
9-D	457+25 458+00	Lt.					135							
10-D	455+75 455+75						207				2		1	
11-D	455+75 458+00	Rt.		221									24	
13-D	458+00 458+00						202						24	
14-D	458+00 460+00	Rt.					198				2		1	
Total			*185'	*7/3		*317	*369	*549	*75	198	4	10	1	4

* Sec. M-6.5(b) or Sec. M-6.8(b)
 * Sec. M-6.6(b) or Sec. M-6.8(b)



RELOCATED UNDER 1994 CUY-271-7.61 PLANS

SLM 8.27, 15" SEE SHEET 259

REMOVED UNDER 1994 CUY-271-7.61 PLANS

REF. NO.	STATION	SIDE	UNDERDRAINS			
			I-4	I-4	I-5	
			Outlet Pipe Under 8"	Pipe Under 6"	60° Bend 6"	90° Bend 6"
	From To			Each		
			Lin. Ft.			
1-U	450+00 450+75	Lt.	10	75	1	
2-U	450+00 450+75	Lt.	10	70	1	
3-U	450+00 450+75	Rt.	10	70	1	
4-U	450+00 453+50	Rt.	10	34.1	1	
5-U	450+70 458+00	Lt.	10	730		1
6-U	450+70 458+00	Rt.	10	725	1	
7-U	453+45 458+00	Rt.	10	443	1	
8-U	454+50 460+00	Lt.		550		
9-U	458+04 460+00	Lt.		196		
10-U	457+95 460+00	Rt.		205		
11-U	457+12 F-2 460+00	Rt.		48		
12-U	457+00 F-2 458+00	Rt.	10	125		1
Total			80	3,578	6	1

* I-4 Underdrain (Deep)

GUARDRAIL		
STATION	SIDE	I-15 Steel Beam Type (Deep) Lin. Ft.
From To		
450+00 450+75	Lt.	75
450+00 450+30	Lt.	30
Total		105

SEE 1994 CUY-271-7.61 PLANS FOR EXTENSIONS OF LATERAL STORM SEWERS AND RELOCATION OF TRUNK SEWERS

Note:
 For Interchange Details See Sheets 45-51.
 For Sewer Profiles See Sheets 258, 259 & 262

Note:
 Earthwork for Ramps F-3, F-3A, F-2, F-5 and F-6 is included in the totals for this sheet. 7.

Excavation	467,973	Cu. Yds.
Embankment	1,5491	Cu. Yds.
Embankment + 18%	1,787,479	Cu. Yds.