

SLM 29.56=
MM 185.37=
SLM 28.48 SR 2

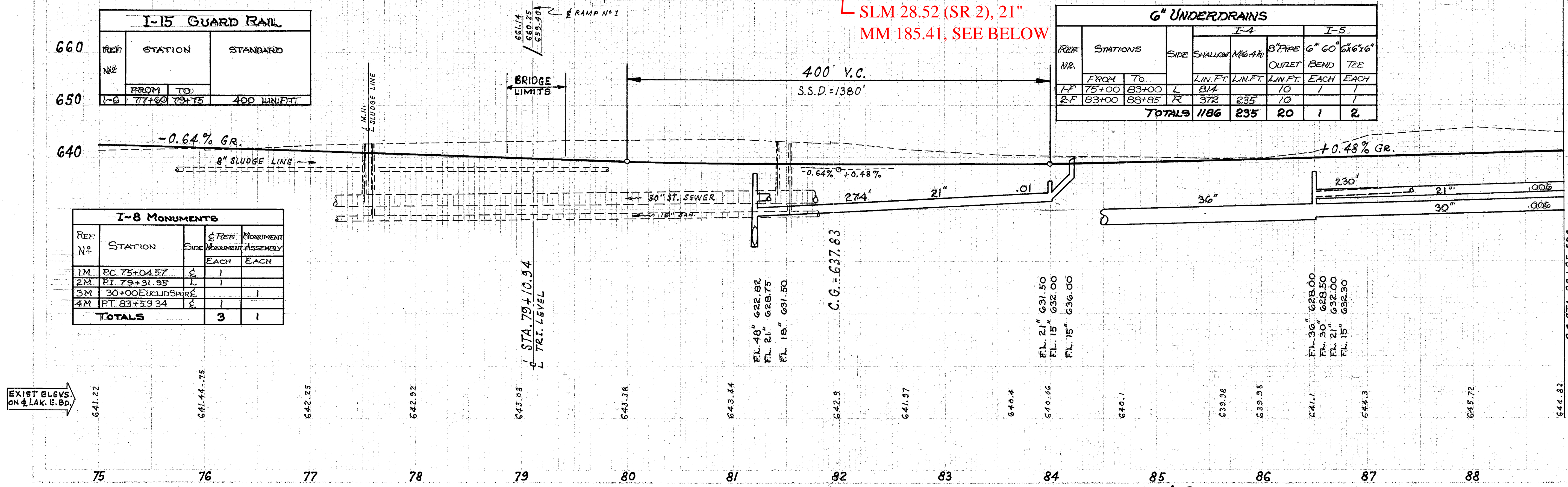
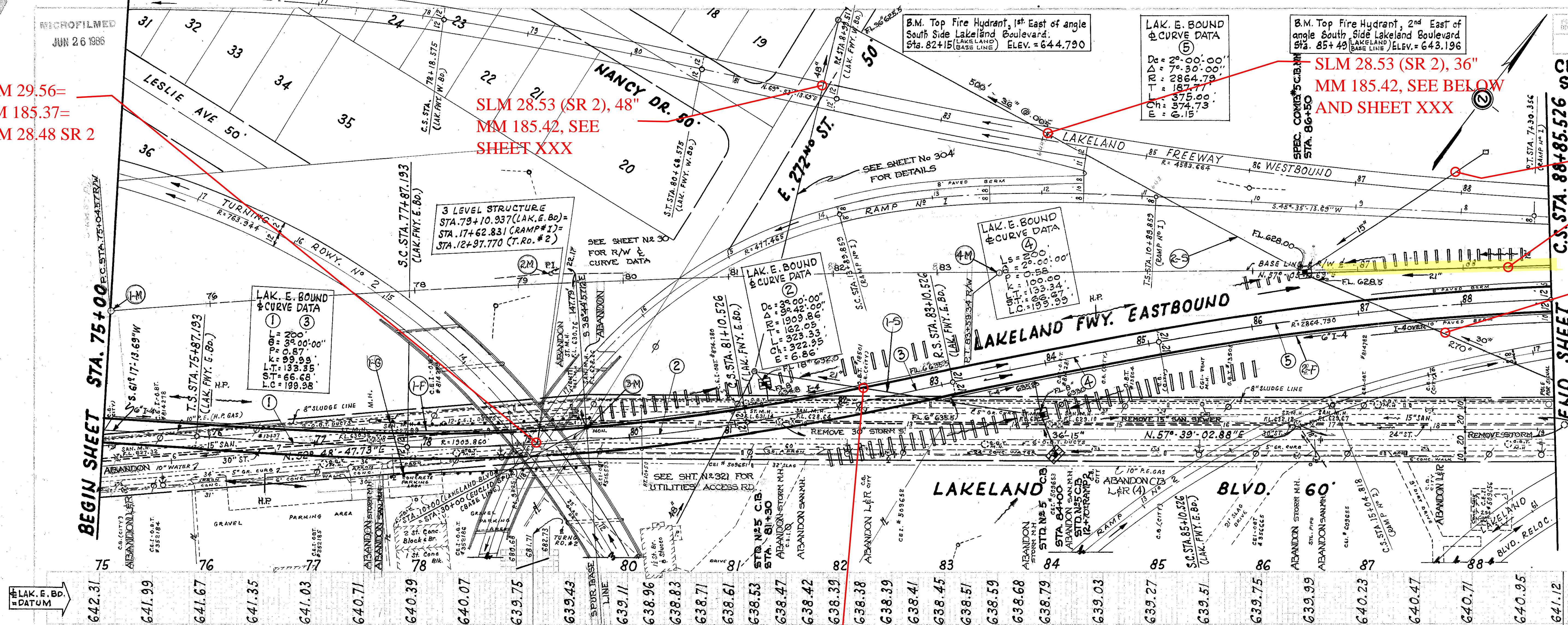
SLM 28.53 (SR 2), 48"
MM 185.42, SEE SHEET XXX

SLM 28.53 (SR 2), 36"
MM 185.42, SEE BELOW AND SHEET XXX

CUYAHOGA COUNTY
SEC. CUY-2-28.16
CUY-525-0.00
LAKE COUNTY
SEC. LAK-525-0.00

SLM 28.62 (SR 2), 15"
MM 185.51, SEE SHEET XXX
SLM 28.62 (SR 2), 21"
MM 185.51, SEE BELOW

CFN 1971598
SLM 28.62 (SR 2), 30"
MM 185.51, SEE BELOW



REF. NO.	STATION	STANDARD
1-6	77+60 TO 79+75	400 LIN. FT.

RAMP NO.	STATIONS	SIDE	I-4		I-5	
			SHALLOW	M.G.A.H.	8" PIPE	6" 60' x 6" 6"
	FROM	TO	LIN. FT.	OUTLET	END	TEE
1-F	75+00	83+00	L	814	10	1
2-F	83+00	88+85	R	372	235	10
TOTALS				1186	235	20

REF. NO.	STATION	SIDE	REF. MONUMENT	MONUMENT ASSEMBLY
1M	PC 75+04.57	E	1	
2M	PI 79+31.95	L	1	
3M	30+00 EXCL. SHUR	E	1	
4M	PT 83+59.34	E	1	
TOTALS			3	1

REF. NO.	STATION	FROM	TO	CLASS	UNDER	PAVT.	15"	21"	30"	36"	42"	48"	60"	72"	74"	740	490														
I-5	79+75	86+00	R	3-6	10	110	164																								
I-5	82+00	86+85	L	3-6	10	136	134	200	300	230																					
I-5	75+00	88+85	R	3-6	11	10	740	490																							
TOTALS																	36	10	164	136	134	200	300	230	3	1	247	11	10	740	490