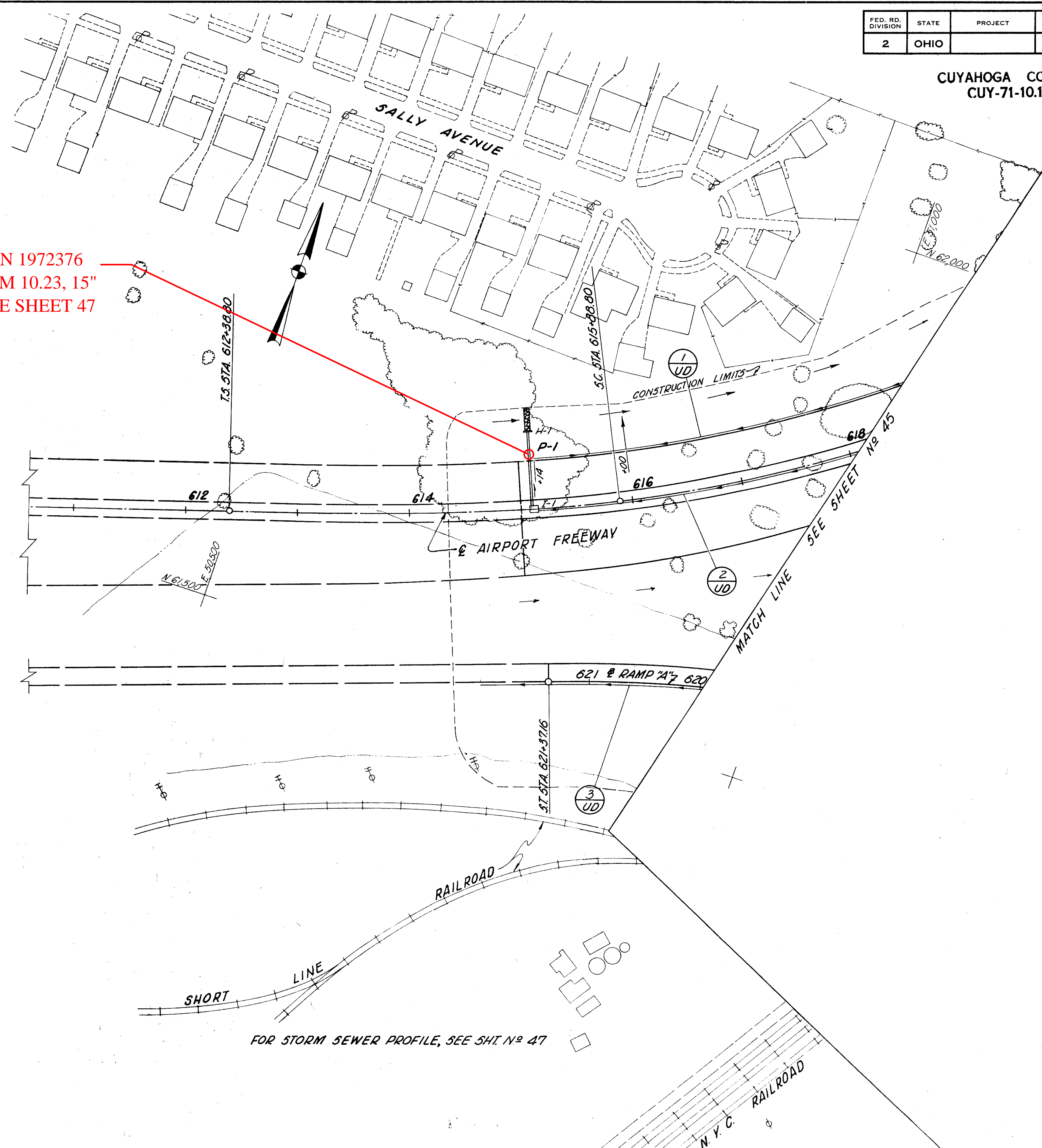


CFN 1972376
SLM 10.23, 15"
SEE SHEET 47



DATE	BY	REVISION

ESTIMATED QUANTITIES

REF. NO.	STATION TO STATION	SIDE	I-1						
			CL. F-3	CLASS F-4		I-5			
			6"	6"	8" SEC. M-6.4(G)	6" TEE			
			LIN. FT.	LIN. FT.	EACH				
1-UD	615+14 ~ 618+60	LT	138						
		RT	431		10	1			
2-UD	615+14 ~ 618+10		286	10					
3-UD	"A" 620+00 ~ 621+97		197						
TOTALS			914	10	10	1			

FOR STORM SEWER PROFILE, SEE SHI. No. 47