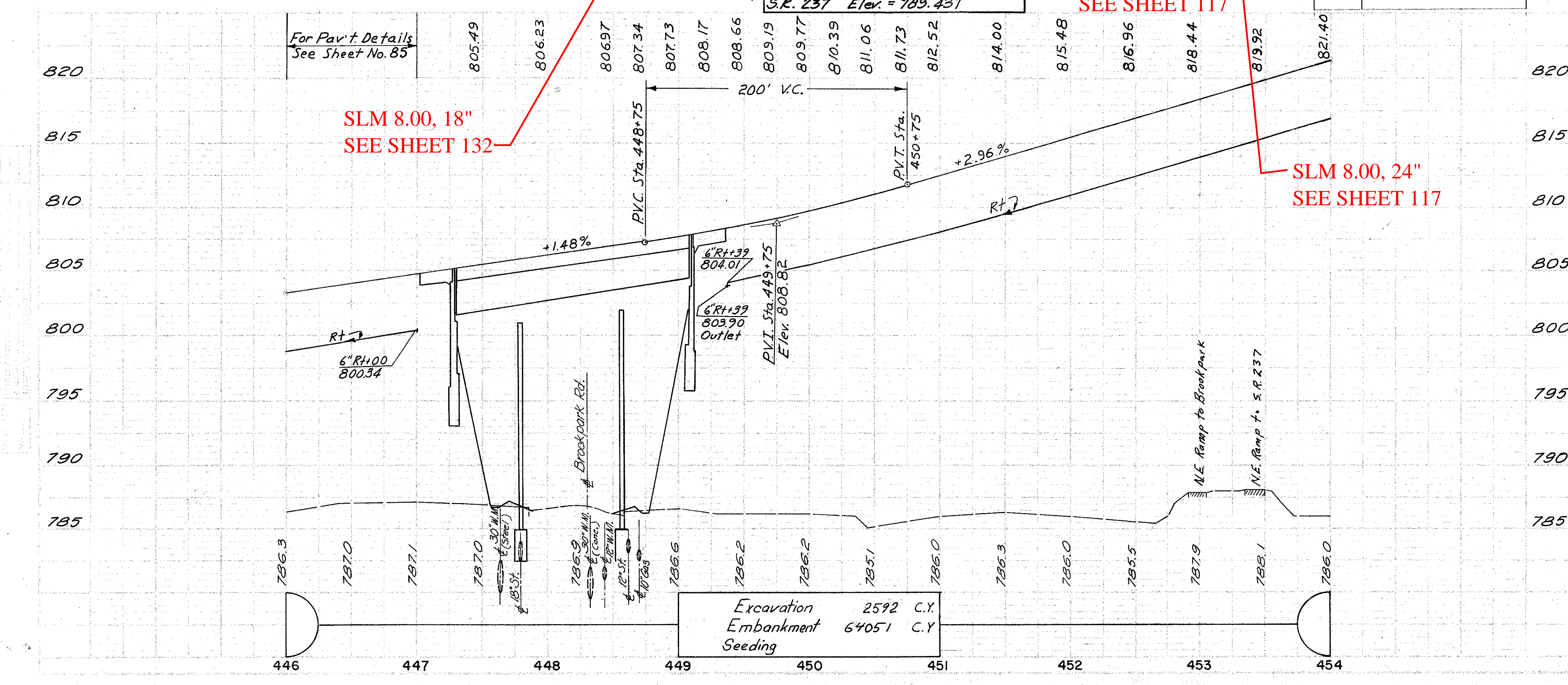
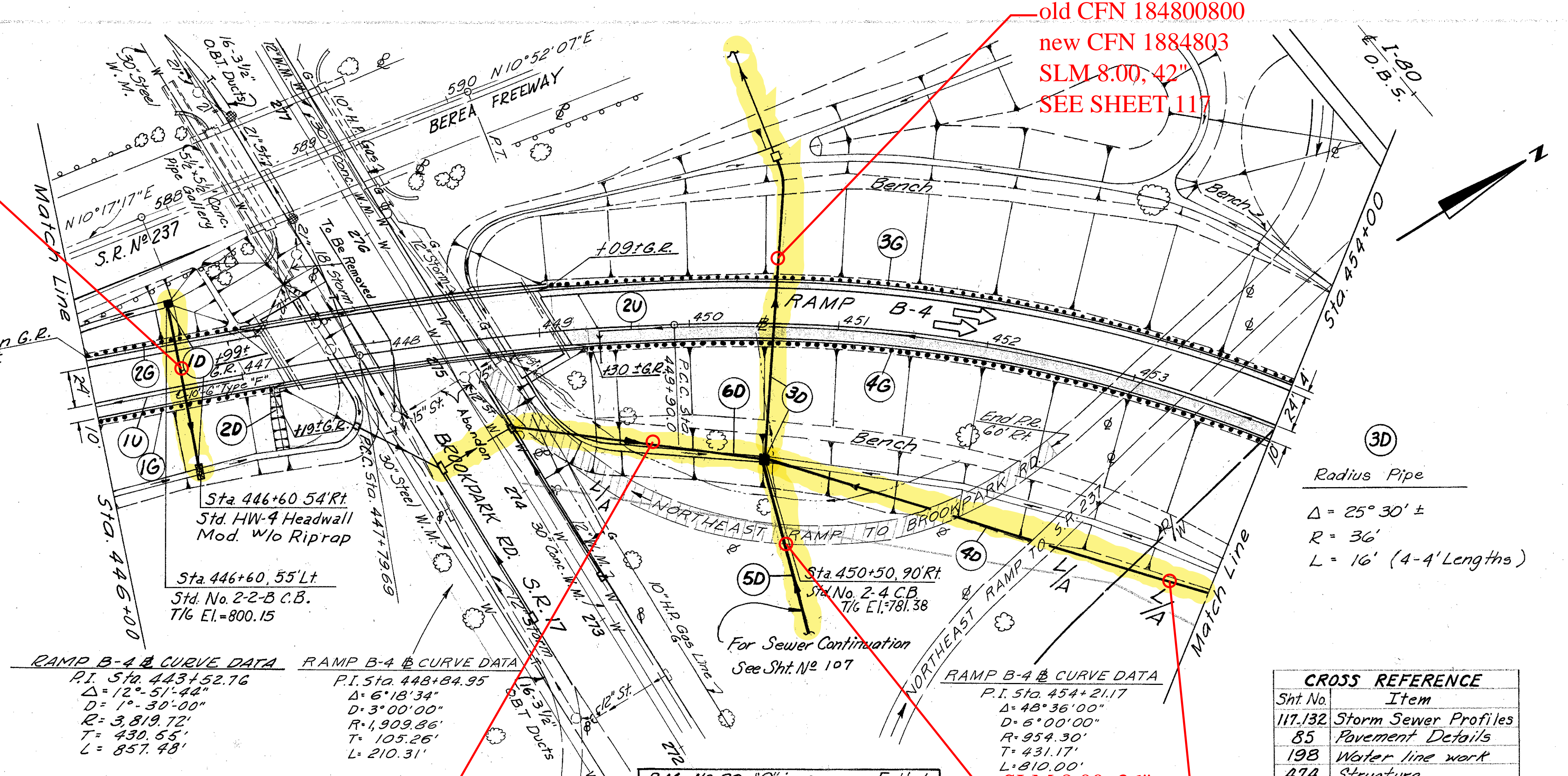


CUYAHOGA COUNTY
 CUY-480-800
 CUY-17-7.59

CFN 1974218
 SLM 8.02, 15"
 SEE SHEET 132

old CFN 184800800
 new CFN 1884803
 SLM 8.00, 42"
 SEE SHEET 117



ROADWAY	BRIDGE	PAVEMENT	STRUCTURE	ESTIMATED QUANTITIES
606	Guard Rail, Type 5 Standard	Bridge Terminal Assy. Type E		
606	Pavement Removed	Bridge Terminal Assy. Type F		
660	Special Berm & Slope Protection	Bend & Branches		
605	Unclassified	Shallow		
604	No. 2-2-B C.B.	No. 2-4 C.B.		
603	Type B Bedding	Type B		
602	Concrete Masonry	Rock Channel Protection Type B		

PROPOSED STRUCTURE NO. CUY-480
 TYPE: Continuous steel beam with reinforced concrete deck and reinforced concrete substructure.
 SPANS: 51'-0", 78'-0", 51'-0" ½ Brgs. along local tang.
 ROADWAY: 41'-0" f/p concrete parapets with Type 1 railing and 1'-0" curbs.
 LOADING: C.F. - 2000 (1957)
 WEARING SURFACE: 1" Monolithic concrete.
 SKEW: 23° 54' 19" rt. forward with respect to Ref. Ch.
 ALIGNMENT: 1° 30' 00" & 3° 00' 00" Compound Curve
 APPROACH SLABS: A 5-1-67 (25'-0" long).
 SUPERELEVATION: Varies from 0.021 ft to 0.049 ft.

* 3D+50 - 38.3% Interstate, 61.7% Urban