

FED. RD. DIVISION	STATE	PROJECT	90
2	OHIO		390

CUYAHOGA COUNTY
CUY. 480-21.40

DRAINAGE LEGEND

- Proposed Drainage Ditch
- Proposed Storm and Sanitary Sewers
- Proposed Underdrains
- Existing Storm Sewers
- Existing Sanitary Sewers
- Existing Water Mains
- Proposed Storm Manhole
- Proposed Sanitary Manhole
- Proposed Median Inlet
- Proposed Ditch Catch Basin
- Proposed Pavement Catch Basin
- Existing Storm and Sanitary Manholes
- Existing Storm Inlets
- Jute Matting
- Rock Channel Protection
- Sod
- Paved Gutter

SLM 21.77, 12"
SEE SHEET 113

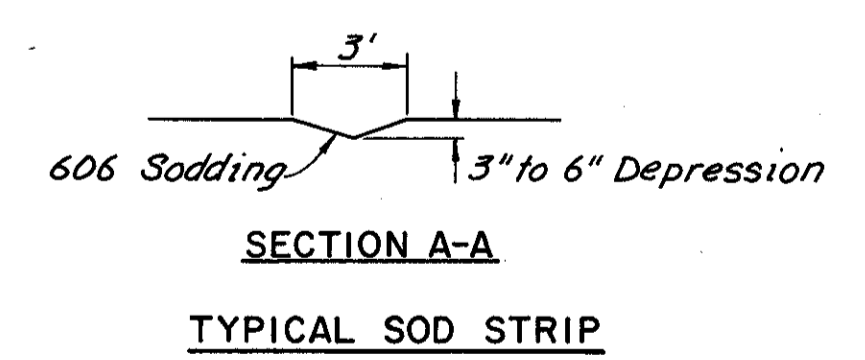
SLM 21.86, 24"
SEE SHEET 116

CFN 1974756
SLM 21.86, 30"
SEE SHEET 116

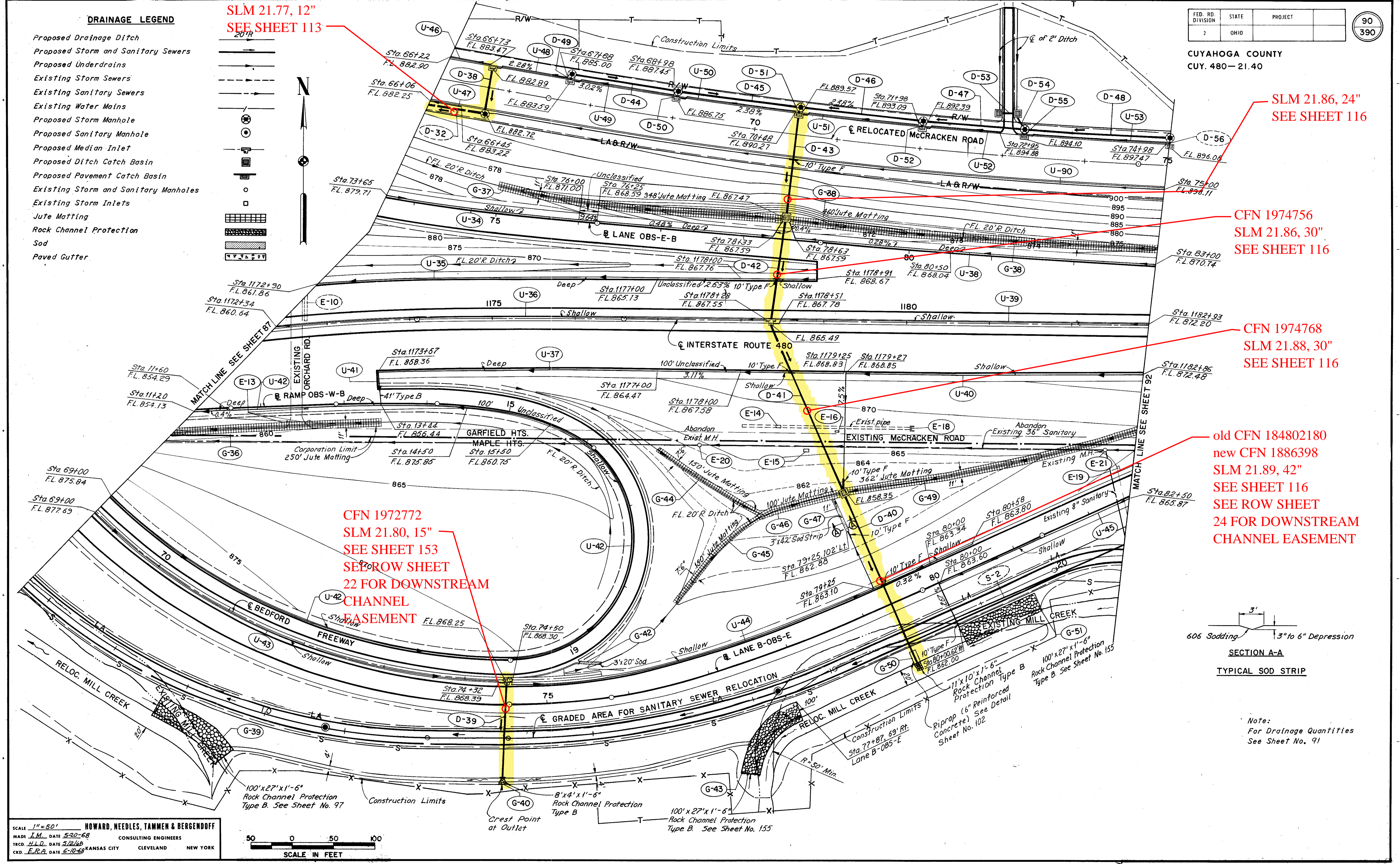
CFN 1974768
SLM 21.88, 30"
SEE SHEET 116

old CFN 184802180
new CFN 1886398
SLM 21.89, 42"
SEE SHEET 116
SEE ROW SHEET
24 FOR DOWNSTREAM
CHANNEL EASEMENT

CFN 1972772
SLM 21.80, 15"
SEE SHEET 153
SEE ROW SHEET
22 FOR DOWNSTREAM
CHANNEL
EASEMENT



Note:
For Drainage Quantities
See Sheet No. 91



SCALE 1"=50'
HOWARD, NEEDLES, TAMMEN & BERGENDOFF
MADE I.M. DATE 5-20-68 CONSULTING ENGINEERS
TRCD H.L.D. DATE 5/22/68
CKD E.R.B. DATE 6-10-68 KANSAS CITY CLEVELAND NEW YORK

