

SLM 8.27, 42"
SEE BELOW

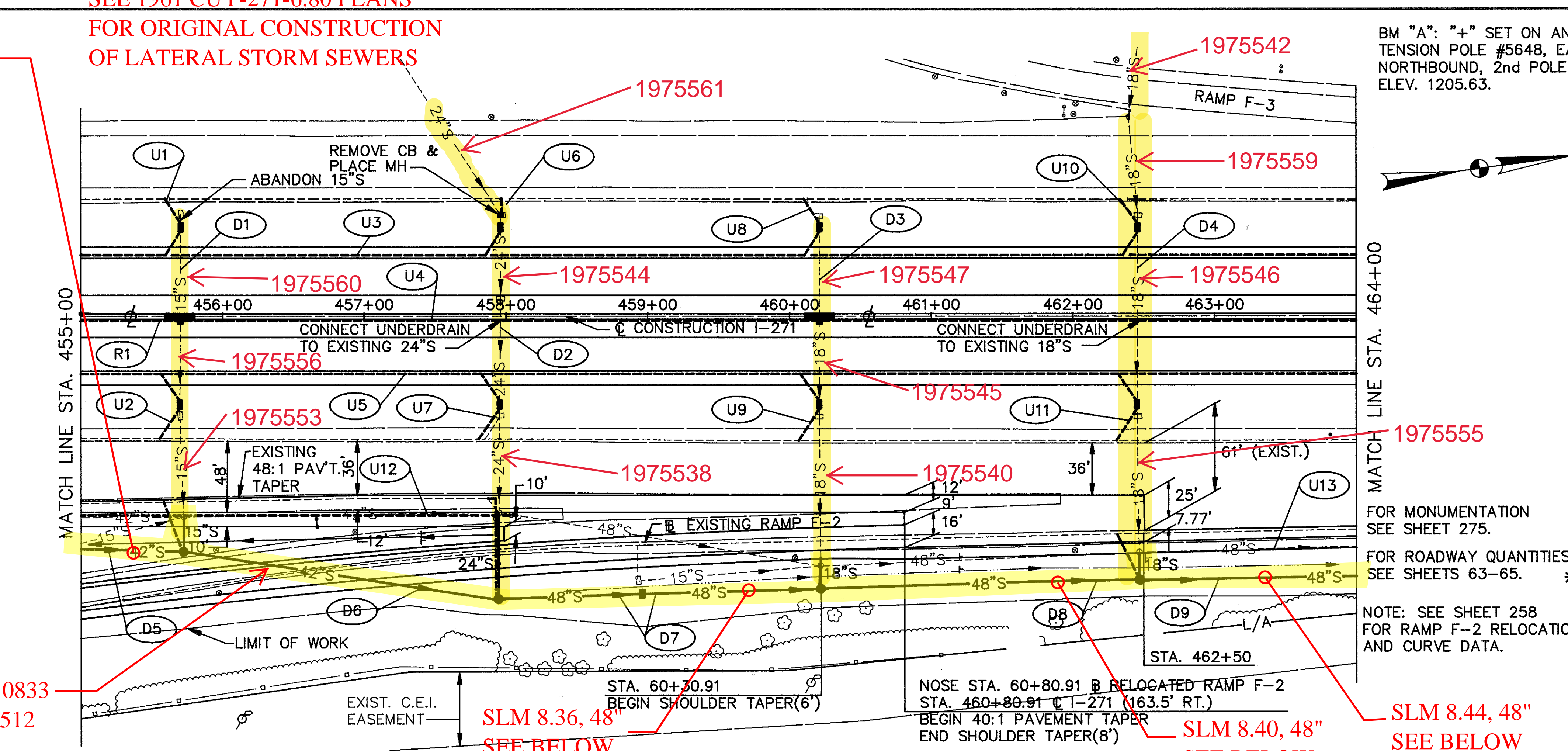
SEE 1961 CUY-271-6.80 PLANS
FOR ORIGINAL CONSTRUCTION
OF LATERAL STORM SEWERS

BM "A": "+" SET ON ANCHOR BOLT OF HIGH
TENSION POLE #5648, EAST SIDE OF I-271
NORTHBOUND, 2nd POLE SOUTH OF BM#35.
ELEV. 1205.63.

CALC. BY: JJB
DATE: 5/93
CHKD. BY: TJM
DATE: 7/93

CUY-271-7.61

OHIO
FHWA REGION 5
81
568



ESTIMATED QUANTITIES

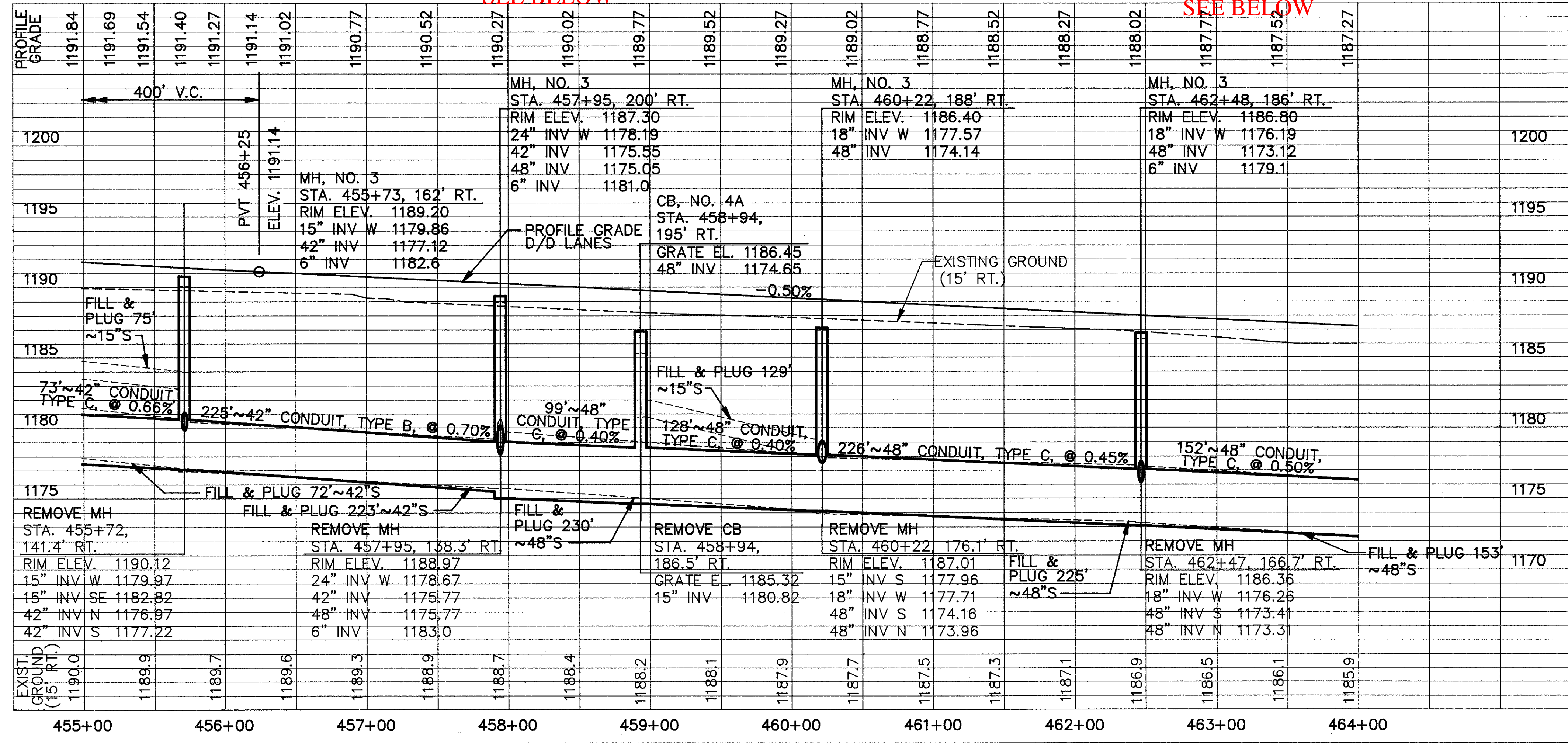
REF.	FROM	TO	SIDE	SPCL					603										604				660
				FILL & PLUG EXISTING CONDUIT	CATCH BASIN REMOVED	MANHOLE REMOVED	CATCH BASIN ABANDONED	15" CONDUIT, TYPE B, 706.02	15" CONDUIT, TYPE C, 706.02	18" CONDUIT, TYPE B, 706.02	18" CONDUIT, TYPE C, 706.02	24" CONDUIT, TYPE B, 706.02	24" CONDUIT, TYPE C, 706.02	42" CONDUIT, TYPE C, 706.02	48" CONDUIT, TYPE C, 706.02	MANHOLE, NO. 1	CATCH BASIN, NO. 4 WITH "E" GRATE	CATCH BASIN, NO. 4A WITH "E" GRATE	MANHOLE, NO. 3	INLET, NO. 3B50, A.P.P.	SODDING		
DUAL-DUAL QUANTITIES																							
D1	455+70		L&R		1		1	14	26										2		1	200	
D2	457+96.0		L&R		2														2			200	
D3	460+21		L&R		1		1			14	26		8	42				1	2			200	
D4	462+46		L&R		2							39						2				200	
MAINLINE QUANTITIES																							
D5	455+00	455+73	R	147		1		25														1	
D6	455+73	457+95	R	223		1						66										1	
D7	457+95	460+22	R	359	1	1																1	
D8	460+22	462+48	R	225		1			16												227	1	
D9	462+48	464+00	R	153																	152	1	
TOTALS				1107	7	4	2	39	26	54	65	74	42	73	605	1	8	1	4	2	800		

old CFN 182710833
new CFN 1864512
SLM 8.36, 42"
SEE BELOW

SLM 8.36, 48"
SEE BELOW

SLM 8.40, 48"
SEE BELOW

SLM 8.44, 48"
SEE BELOW



REF.	FROM	TO	SIDE	603		605		6" FITTINGS			603
				6" CONDUIT, TYPE F	6" CONDUIT, TYPE B	6" SHALLOW PIPE UNDERDRAIN WITH FABRIC WRAP	6" SHALLOW PIPE UNDERDRAIN WITH FABRIC WRAP, A.P.P.	WYE	TEE	BEND	
DUAL-DUAL QUANTITIES											
U1	455+55.4	455+70	L	30							1
U2	455+55.4	455+70	R	30							1
U3	455+00	464+00	L	108			892				4
U4	455+00	464+00	R	40			872		2		4
U5	455+00	464+00	R	108			892				4
U6	457+96		L	18							1
U7	457+81.4	457+96	R	30							1
U8	460+06.4	460+21	L	30							1
U9	460+06.4	460+21	R	30							1
U10	462+31.3	462+45.9	L	30							1
U11	462+30.5	462+45.1	R	30							1
MAINLINE QUANTITIES											
U12	455+00	458+13	R	116	313			1			3
U13	462+13.5	464+00	R	38	187			1			2
*D6				455+73	457+95	R					225
TOTALS							638	500	2656		225