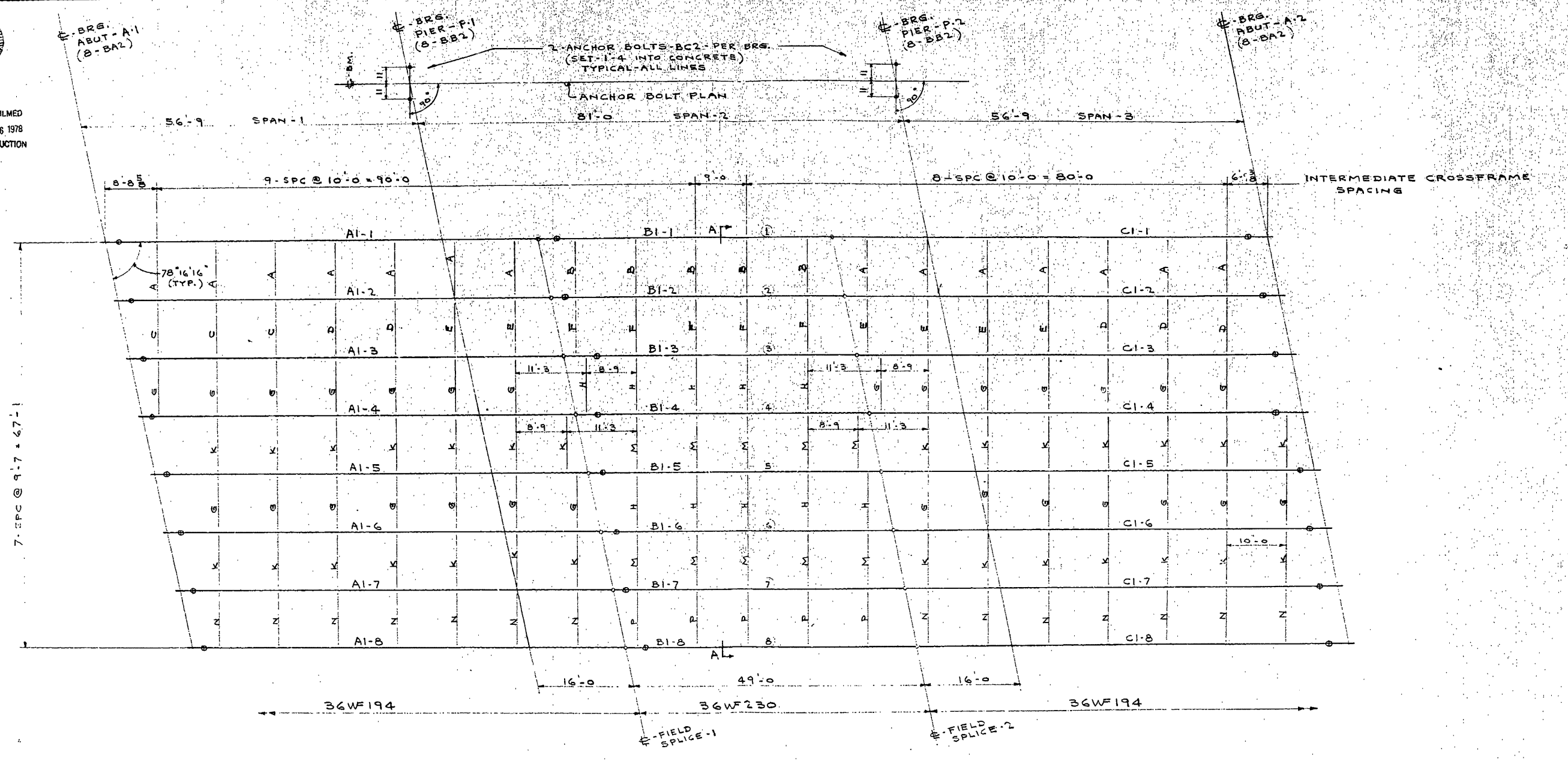






MICROFILMED  
OCT 6 1978  
REPRODUCTION



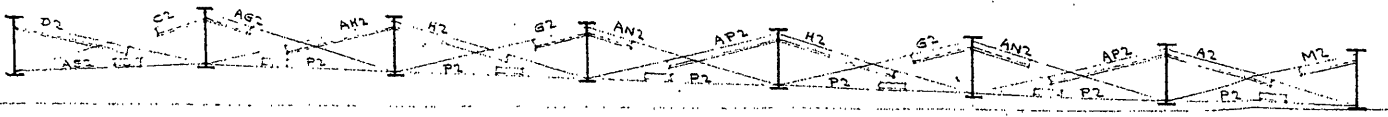
STEEL FRAMING PLAN (LEFT BRIDGE)

1973 - SPECIFICATIONS

ALL STEEL ASTM A36.  
 WELDING SHALL BE IN ACCORDANCE WITH  
 AWS SPECIFICATIONS FOR WELDED  
 HIGHWAY AND RAILWAY BRIDGES, EXCEPT  
 AS MODIFIED BY OHIO STATE  
 SPECIFICATION 513.17.  
 PAINT ONE SHOP COAT RED LEAD  
 OHIO STATE SPECIFICATION 708.15.  
 ALL STEEL SHALL BE CLEANED  
 BY ABRASIVE BLAST CLEANING.  
 CONSTRUCTION & MATERIAL SPEC.  
 501.05 APPLIES FOR EACH SHEET.

BUREAU OF BRIDGES  
 Director of Bridges  
 [Signature]  
 [Date]

APPROVED - JAN. 16 - 75

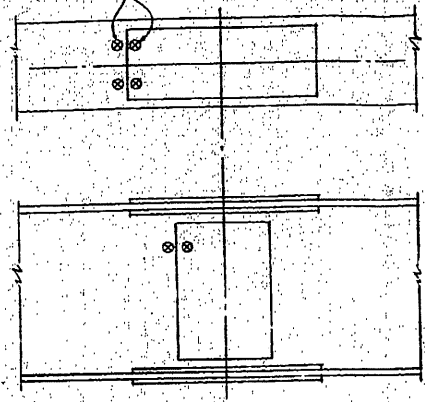


SECTION - A-A

STRUCT. CUY-90-0941-LEFT		
FOR CUYAHOGA COUNTY		
LOCATION OVER WEST 140 <sup>TH</sup> ST.		
OHIO STATE PROJ-58(74)		
CONTR. ALLIED BRIDGE		
LIBSON STEEL FABRICATING, INC		
LIBSON - OHIO		
DR. BY LB	DATE	SHEET NO.
NOV. 20 - 74	NOV. 20 - 74	E1 OF 2

22"  
 11"  
 8.5"  
 8.5"  
 11"  
 17"  
 22"

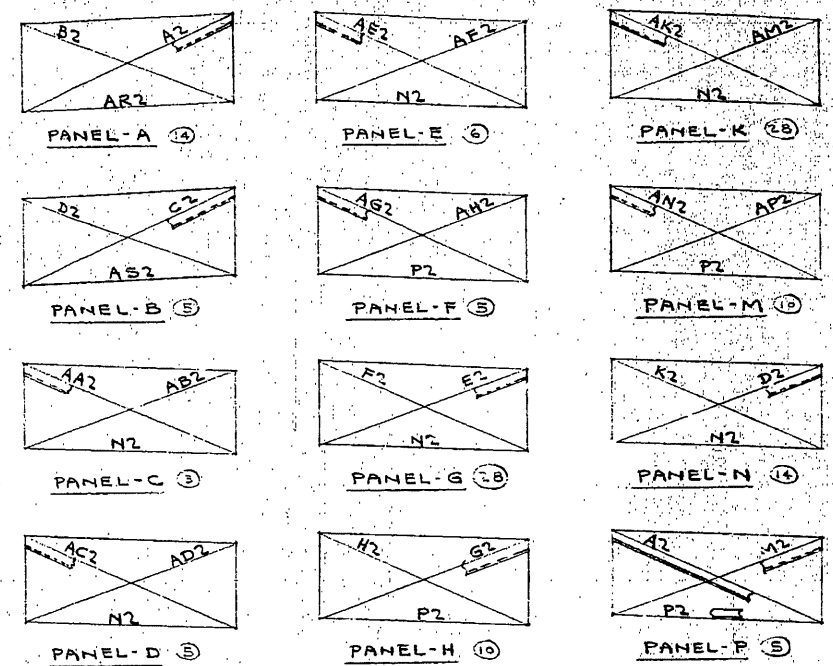
LOCATION OF MATCHMARK (BOTTOM R'S SIMILAR)



FIELD SPLICE MATCHMARK SYSTEM

ALL SPLICE R'S, FILL R'S, AND BEAMS TO BE STEEL STAMPED WITH A (4) CHARACTER IDENTIFICATION ACCORDING TO THE FOLLOWING SYSTEM.

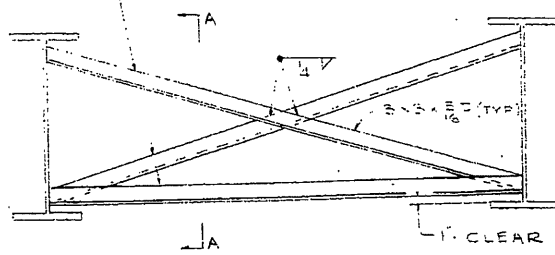
- 1<sup>ST</sup> CHARACTER TO BE A NUMBER DENOTING THE LINE NUMBER.
- 2<sup>ND</sup> CHARACTER TO BE A NUMBER DENOTING THE SPLICE NUMBER.
- 3<sup>RD</sup> CHARACTER TO BE A LETTER T OR B DENOTING TOP OR BOTTOM.
- 4<sup>TH</sup> CHARACTER TO BE A NUMBER 1 DENOTING N.S. OR NUMBER 2 DENOTING F.S.



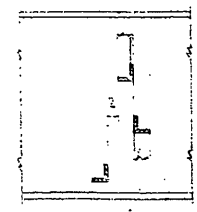
FIELD NOTE

3" 3x3x5/16 PER PANEL.  
PANEL ELEVATIONS TAKEN  
LOOKING EAST.  
TYPICAL THIS AREA.

FIELD WELD BOTH SIDES OF VERTICAL LEG AND TOP SIDE OF HORIZONTAL LEG TO BEAM WITH 1/4" CONT. FILLET WELD.



INTERMEDIATE CROSSFRAMES.



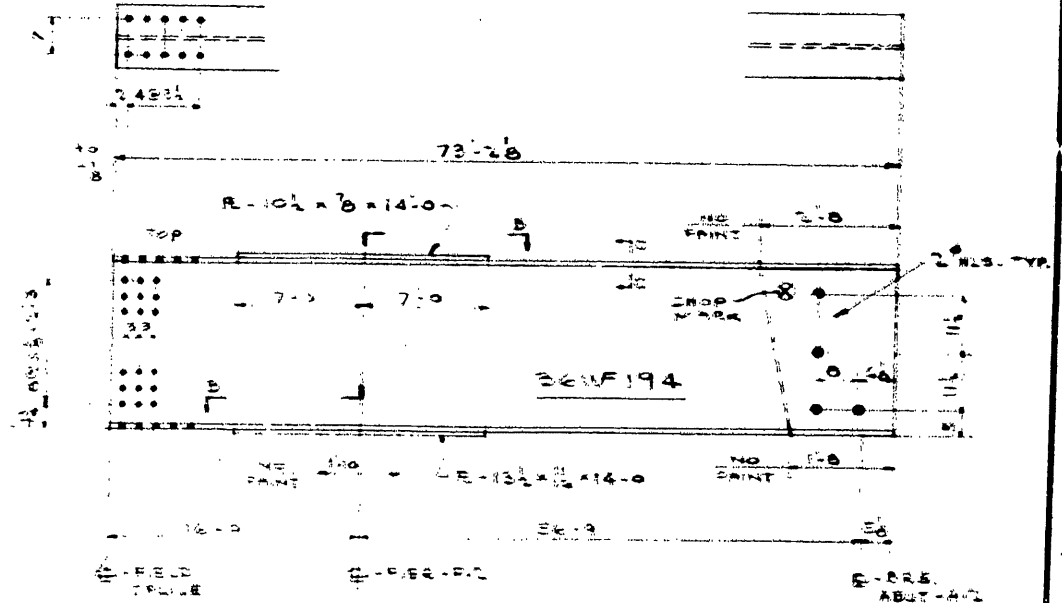
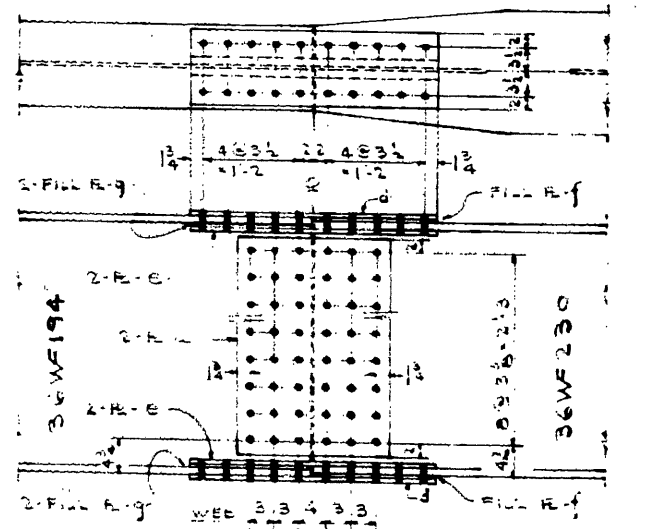
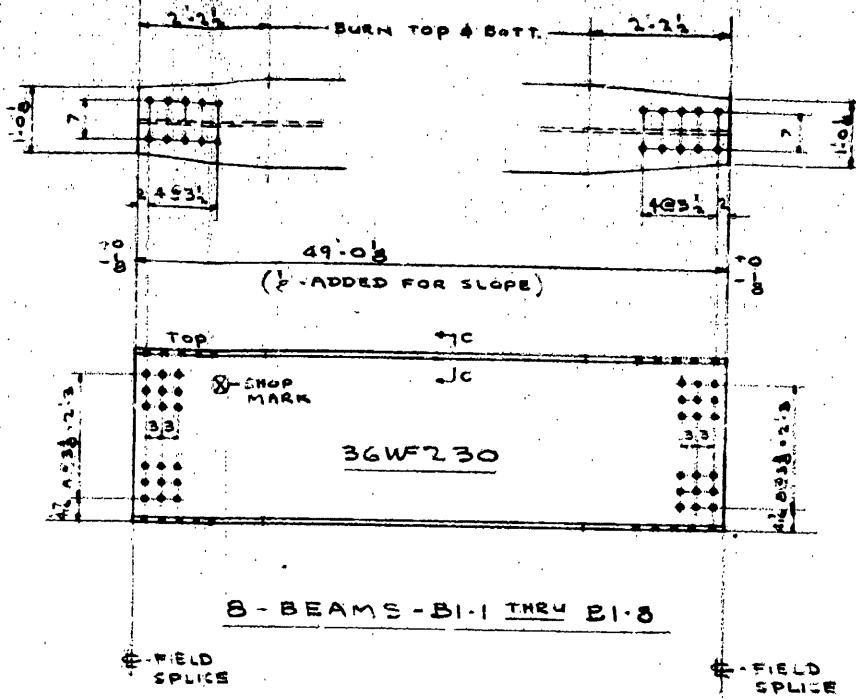
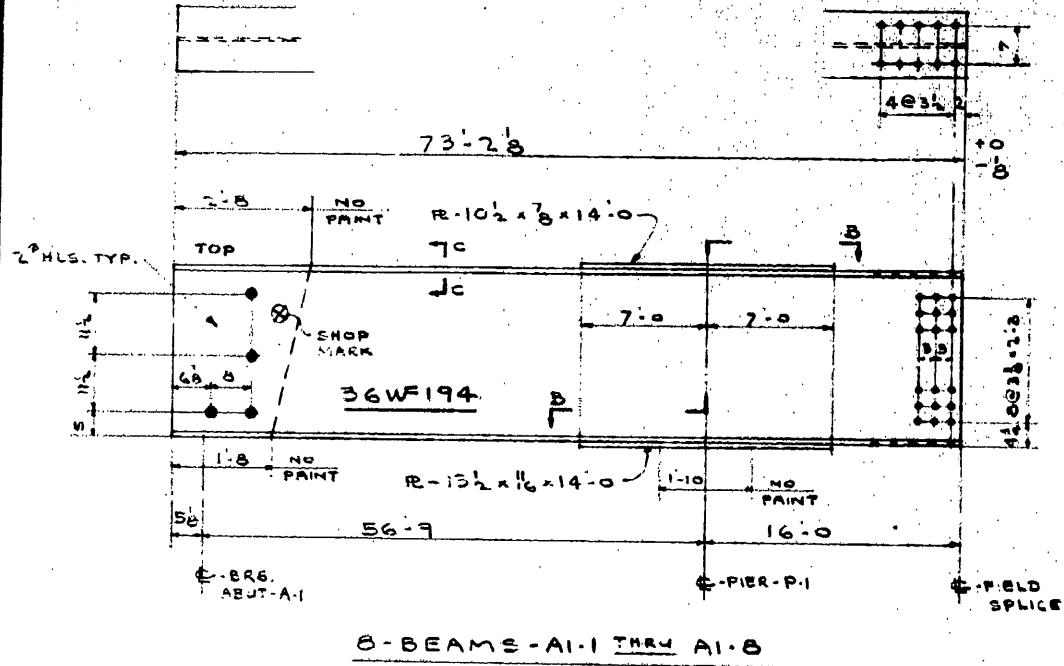
SECT. A-A

BUREAU OF  
APPROVED - JAN - 16 - 75  
LISBON STEEL FABRICATING, INC.  
STRUCT. CUY - 90 - 0941 - LEFT  
FOR CUYAHOGA COUNTY  
LOCATION OVER WEST - 140<sup>TH</sup> ST.  
OHIO STATE PROJ. 58 (74)  
CONTR. ALLIED BRIDGE

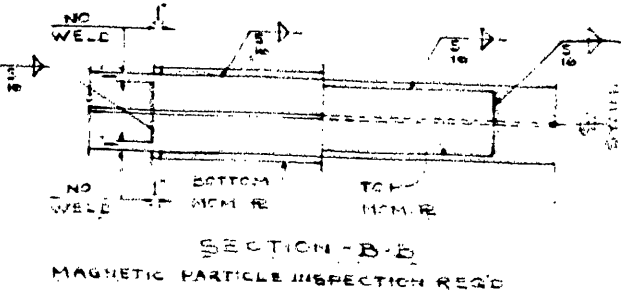
APPROVED - JAN - 16 - 75  
LISBON STEEL FABRICATING, INC.  
STRUCT. CUY - 90 - 0941 - LEFT  
FOR CUYAHOGA COUNTY  
LOCATION OVER WEST - 140<sup>TH</sup> ST.  
OHIO STATE PROJ. 58 (74)  
CONTR. ALLIED BRIDGE

DR BY LB  
DATE Nov. 20. 74  
GCFOW  
REVISED  
CONT. NO LSF-190  
SHEET NO.  
E2 OF 2

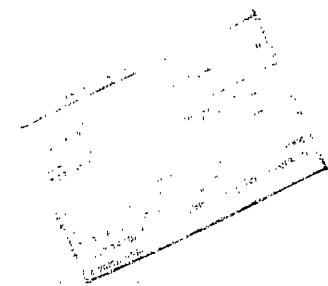
22  
11  
11  
58  
8.5"  
11"  
17"  
22"



- MATERIAL FOR ONE SPICE
- 2-2-R-19 1/2 x 7
  - 2-2-R-11 x 8 x 2-1/2
  - 2-4-R-4 1/2 x 2 x 2-1/2 (CTR. HOLES ON R)
  - 2-2-R-11 x 8 x 1-5/8
  - 2-4-R-4 1/2 x 8 x 1-5/8
  - 54-H.S. BOLTS-1 1/4 x 3/4-WEB
  - 40-1/4 x 1/2-F-ANGLES
  - ONE-HARDENED FLAT WASHER PER BOLT.



SHOP NOTE  
PIECE MARKS FOR EACH BEAM LINE SHALL BE ADHERED TO FOR SHOP LAYDOWN.  
BLOCKING DIAGRAM ON SH. 3.  
BEAM CAMBER LAYOUT ON SH. 3.



APPROVED JAN-16-75  
LISBON STEEL FABRICATING, INC.  
STRICT CUY-90-0241-LEFT  
FOR CUYAHOGA COUNTY  
LOCATION OVER WEST-1400 ST.  
OHIO STATE PROJ-58 (34)  
CONTR. ALLED BRIDGE

TOLERANCE -0 TO -1/4 MAX.  
BOLTED FIELD SPICE 16-REQ'D.

SHOP NOTE  
ALL FIELD SPICE HOLES-1/16" FOR 1/4" H.S. BOLTS.  
NO PAINT WITHIN 3" OF THESE HOLES.



