

A-15

# STATE OF OHIO DEPARTMENT OF TRANSPORTATION CUY-14/14DA-5.42/0.00 CITY OF CLEVELAND CUYAHOGA COUNTY

CUYAHOGA COUNTY CUY-14/14DA-5.42/0.00	OHIO FWMA REGION 5 41
STATE	FEDERAL PROJECT

**DESIGN DESIGNATION**

CURRENT ADT (1985)	= 19000
DESIGN ADT (2005)	= 26000
DHV (DESIGN HOURLY VOLUME)	= 2000
D (DIRECTIONAL DISTRIBUTION)	= 60%
T (PERCENT B & C TRUCKS)	= 6%
V (DESIGN SPEED)	= 50 MPH

MICROFILMED  
APR 21 1992

### CONVENTIONAL SIGNS

County Line	Limited Access (only)	LA
Township Line	Right of Way (only)	RW
Section Line	Limited Access & Right of Way	LA & RW
Corporation Line	Existing Right of Way	
Fence Line (existing) - x - x (proposed) - x - x	Property Line (in existing fence) - x - x	
Center Line 352 or 353	Railroad	
Trees, Stumps (to be removed)	Guardrail (existing) - a - a (proposed) - a - a	
Utility Poles: Telephone $\phi$ , Power $\phi$ , Light $\phi$		

### INDEX OF SHEETS

TITLE SHEET	1
SCHEMATIC PLAN	2
TYPICAL SECTIONS	3-5
GENERAL NOTES	6-11
COMPUTATIONS & SUB SUMMARIES	12-15
GENERAL SUMMARIES	16-18
PLAN SHEETS	19-20
MISCELLANEOUS DETAILS	21-23
CROSS SECTIONS	24-32
STRUCTURES, OVER 20' SPAN	33-38
TRAFFIC CONTROL PLANS	39-41

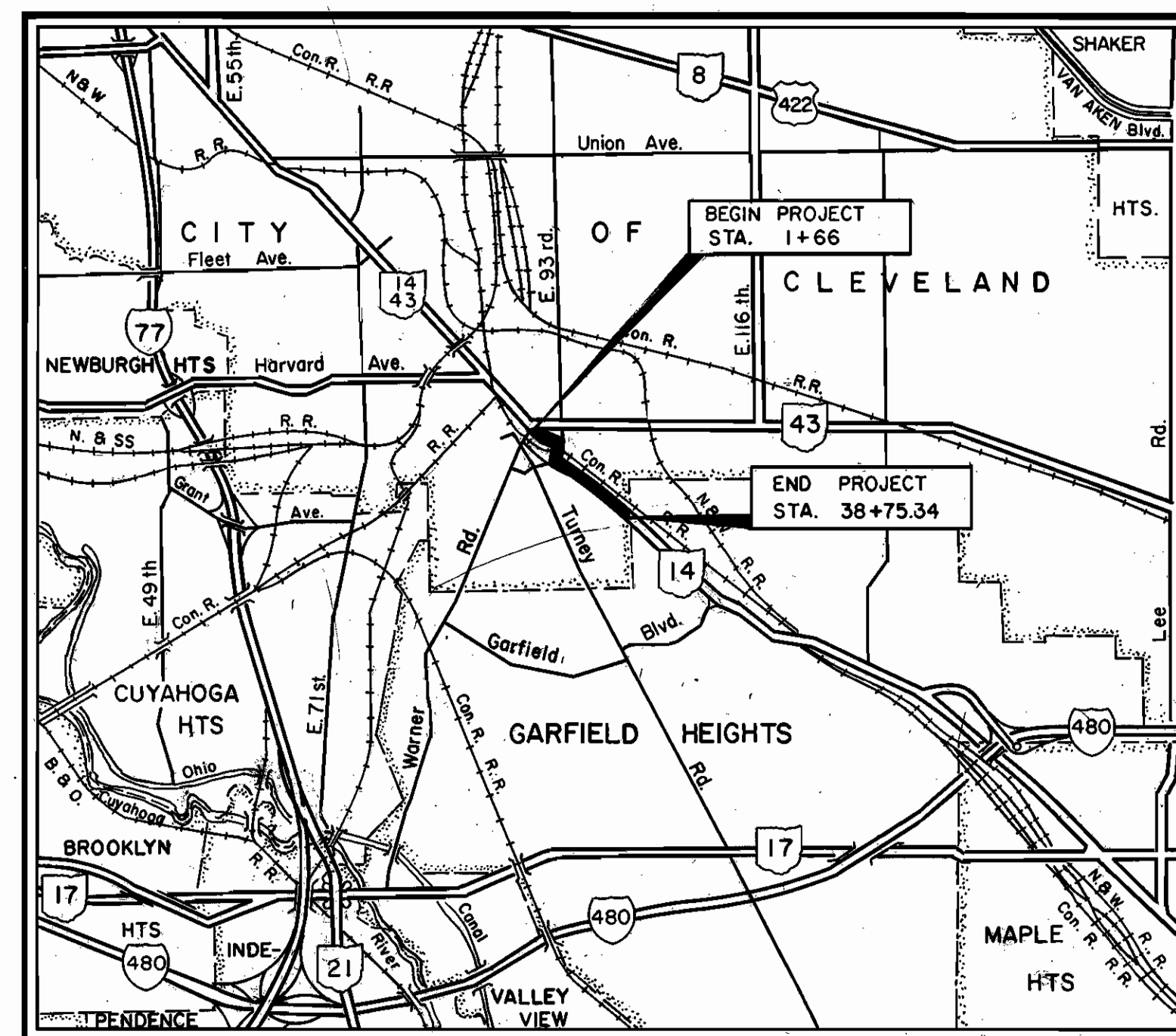
### LINE DATA

**PROJECT LIMITS**  
 S.R. 14 STA. 1+66 TO STA. 69+50=6784 L.F.  
 STA. 29+50 TO STA. 38+75.34=925.34 L.F.  
 DEDUCT FOR STATION EQUATIONS = -3746.36 L.F.  
 S.R. 14 D.A. STA. 5+89.25 TO STA. 29+50=2360.75 L.F.

**ADDITIONAL WORK**  
 S.R. 14 STA. 1+36 TO STA. 1+66=30 L.F.  
 E. 93 ST. STA. 86+36.86 TO STA. 93+10=673.14 L.F.  
 STA. 81+70 TO STA. 84+00=230 L.F.

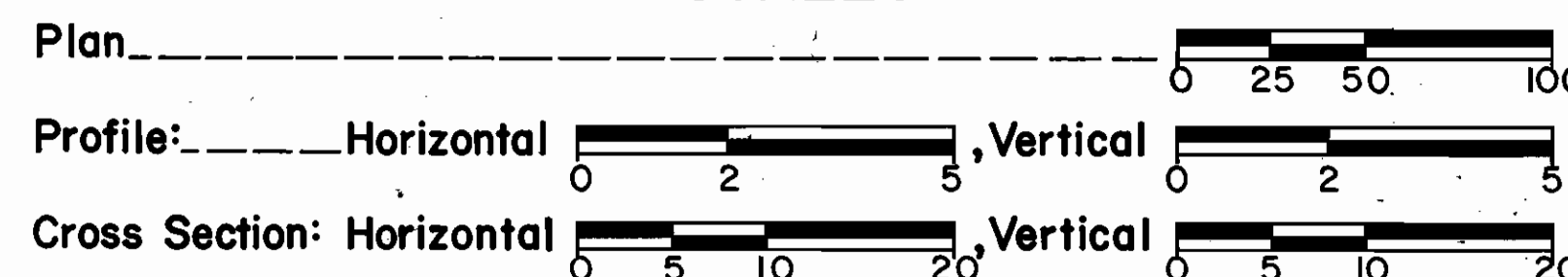
PROJECT LENGTH=6323.73 L.F.=1.198 MI.  
 WORK LENGTH=7256.87 L.F.=1.374 MI.

Plan Prepared By:  
O.D.O.T. DISTRICT 12  
LOCATION & DESIGN



Portion to be improved: \_\_\_\_\_  
 State & Federal Routes: \_\_\_\_\_  
 Other Roads: \_\_\_\_\_

### SCALES



SUPPLEMENTAL SPECIFICATIONS	
845	1-13-84
853	6-26-78
956	6-26-78
847	10-17-83
947	10-17-83
846	10-3-85
848	10-2-85

Approved: Martin A. Gallo  
 Date 10-31-1985 District Deputy Director of Transportation

Approved: Walter J. Geringer  
 Date 12-6-85 Engineer, Bureau of Bridges and Structural Design.

Approved: Wayne H. Kauble  
 Date 2-13-86 Chief Engineer, Planning and Design.

Approved: Warren J. Smith  
 Date 2-13-86 Director, Department of Transportation

SUPPLEMENTAL PRINTS OF STANDARD CONSTRUCTION DRAWINGS			
BP-5	1-11-85	GR-1	1-11-85
BP-6	6-1-65	GR-2B	2-5-82
BP-7	12-6-76	GR-3A	2-5-82
BP-11	1-30-84	GR-3B	1-21-85
BP-12	7-7-81	GR-4	2-5-82
		GR-4A	1-30-84
CB-3	5-1-79	GR-5	2-5-82
		MC-4	7-26-76
		MC-9A	1-11-85
		MC-11	8-1-78
F-1	11-10-83	HW-1	6-1-65
		TC-9.30	4-24-80
		TC-21.20	1-20-84

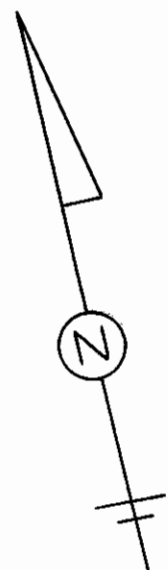
Project: \_\_\_\_\_  
 Date of Letting: \_\_\_\_\_ 19\_\_\_\_, Contract No. \_\_\_\_\_

# SCHEMATIC PLAN

FHWA REGION	STATE	PROJECT
5	OHIO	

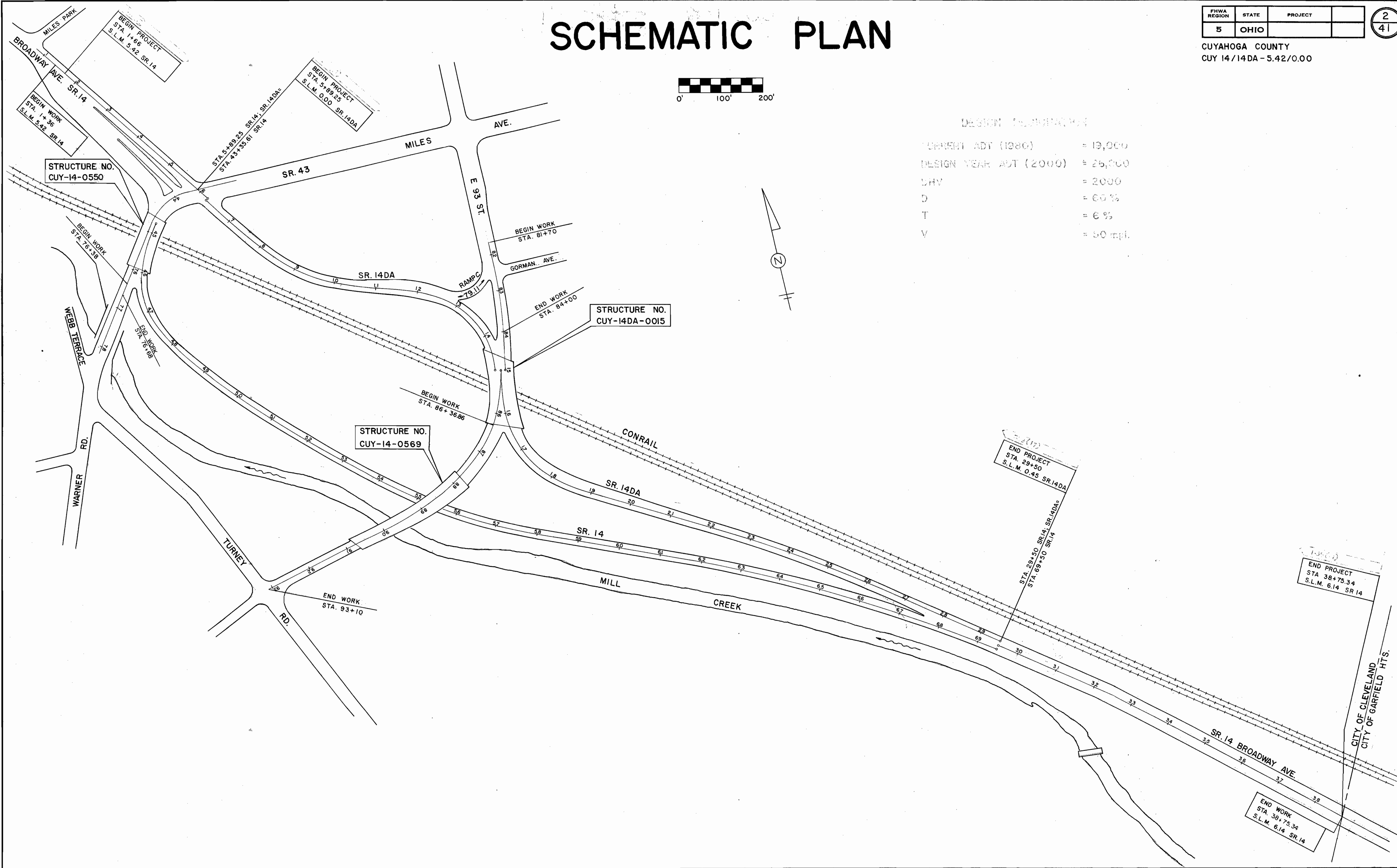
2  
41

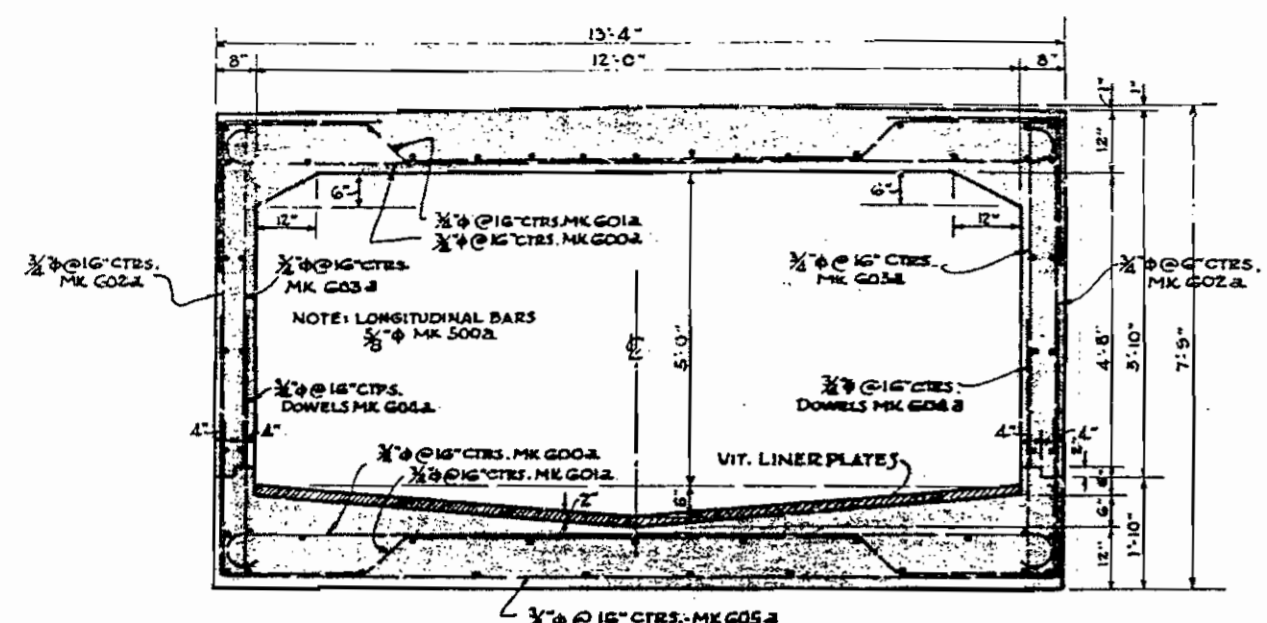
CUYAHOGA COUNTY  
 CUY 14/14DA-5.42/0.00



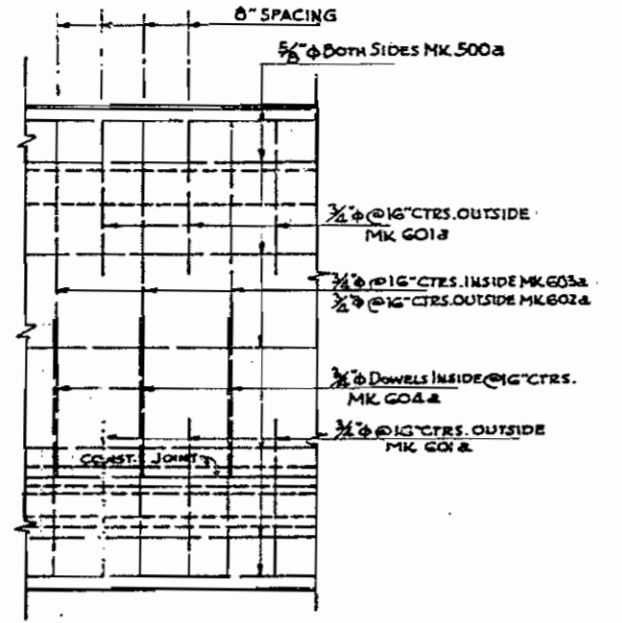
### DESIGN ASSUMPTIONS

CURRENT ADT (1980)	= 13,000
DESIGN YEAR ADT (2000)	= 25,000
DRY	= 2000
D	= 60%
T	= 6%
V	= 50 mph



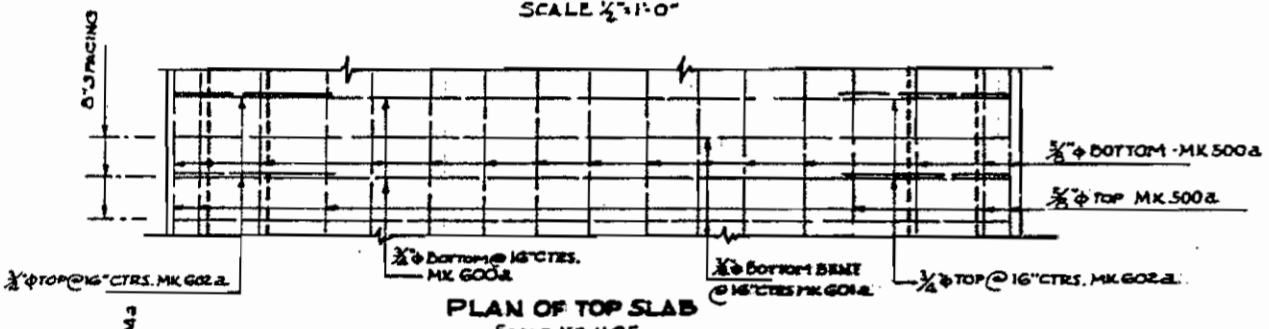


TYPICAL SECTION N#1  
SCALE 1/2" = 1'-0"

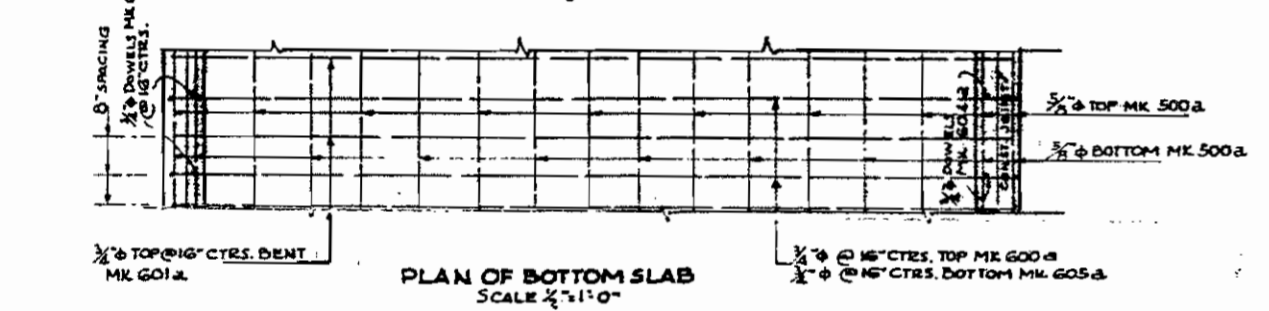


ELEVATION OF WALL  
SCALE 1/2" = 1'-0"

TYPICAL SECT. N#1  
DESIGN DATA  
L.L. 10 TON TRUCK  
PLUS 4 FT. FILL  
OR 6" FILL  
F<sub>1</sub> = 20,000  $\psi$  -  
F<sub>2</sub> = 3,000  $\psi$



PLAN OF TOP SLAB  
SCALE 1/2" = 1'-0"

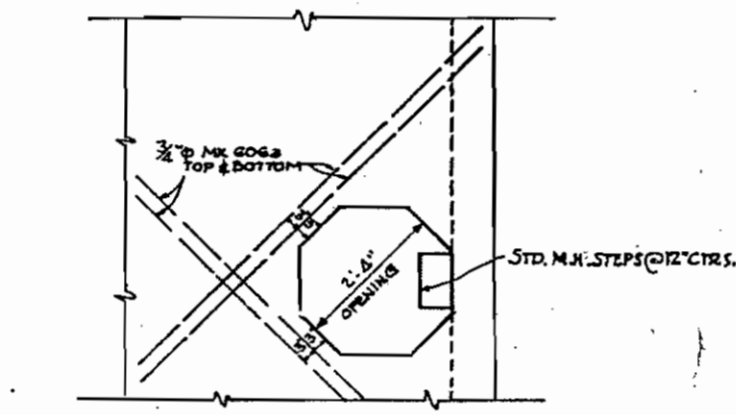


PLAN OF BOTTOM SLAB  
SCALE 1/2" = 1'-0"

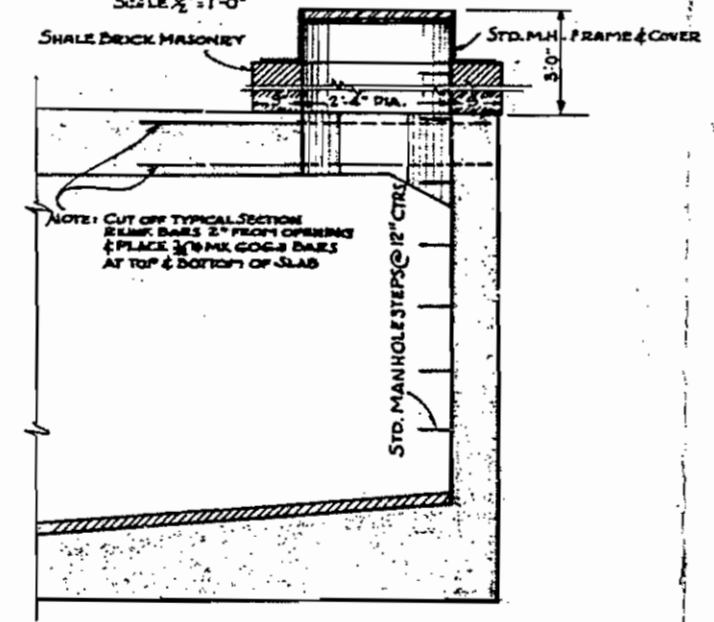
BAR LIST - TYPICAL SECTION N#1 - 12'-0" x 5'-0" REINFC. CONC. CULVERT

MARK	SIZE	DETAIL	APPROX LENGTH	NO REQ'D.
G00a	3/4"		14'-4"	820
G01a	3/4"		18'-8"	820
G02a	3/4"		8'-2"	820
G03a	3/4"	STRAIGHT	5'-0"	828
G04a	3/4"	STRAIGHT DOWEL	4'-4"	828
G05a	3/4"		21'-4"	410
G06a	3/4"	STRAIGHT AT MANHOLES	7'-9"	8
500a	3/4"	STRAIGHT LONGITUDINAL	30'-0"	1056

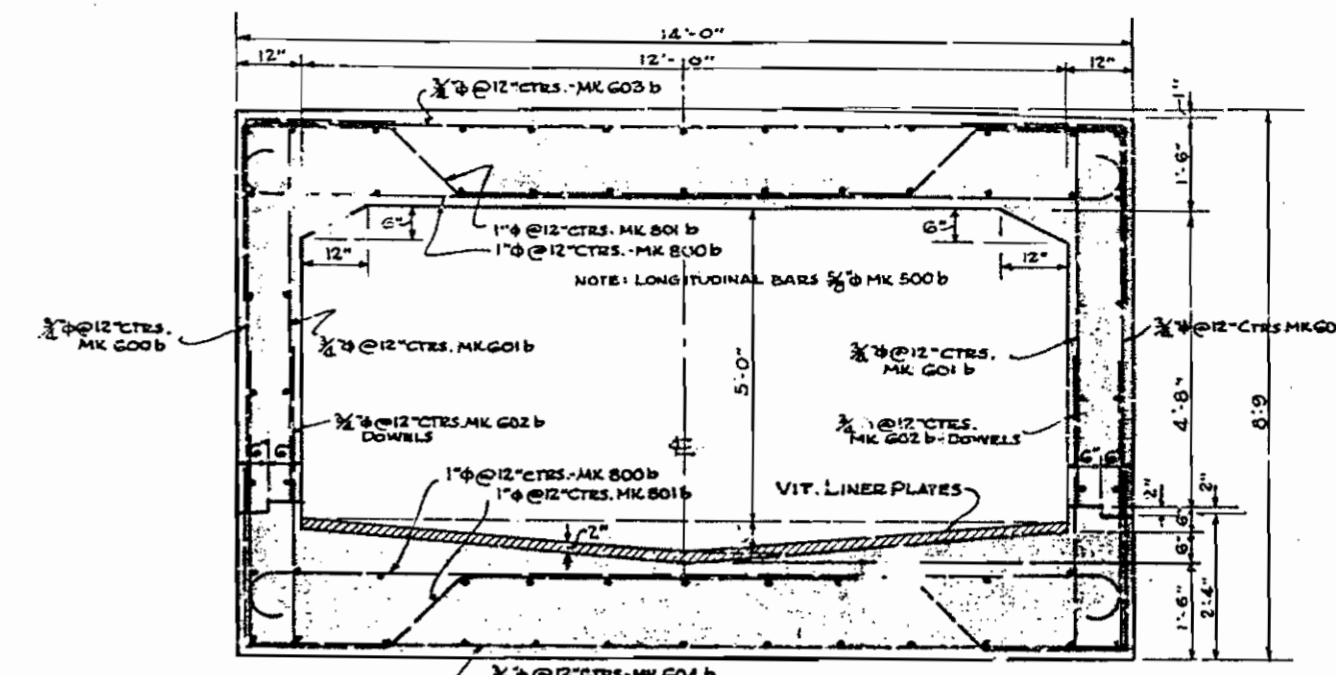
NOTE: CUT OFF TO FIT FOR 24" DIA. OF CULVERT  
NOTE: HOOKS TO BE STD. A.C.I. CODE HOOKS



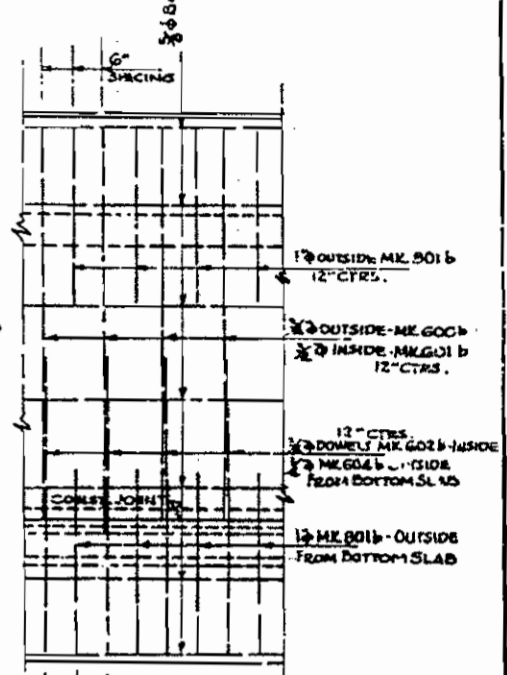
PLAN OF TOP SLAB AT MANHOLE  
SCALE 1/2" = 1'-0"



SECTION OF MANHOLE  
SCALE 1/2" = 1'-0"

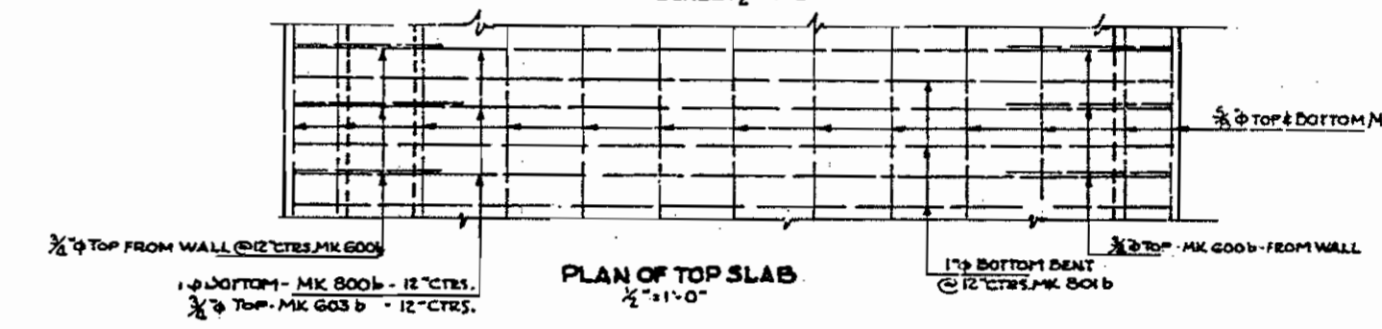


TYPICAL SECTION N#2  
SCALE 1/2" = 1'-0"



ELEVATION OF WALL  
SCALE 1/2" = 1'-0"

DESIGN DATA - TYPICAL SECT. N#2  
L.L. = E-72 RAILROAD  
7' FILL  
F<sub>1</sub> = 3000  $\psi$  -  
F<sub>2</sub> = 20,000  $\psi$  -



PLAN OF TOP SLAB  
SCALE 1/2" = 1'-0"



PLAN OF BOTTOM SLAB  
SCALE 1/2" = 1'-0"

BAR LIST - TYPICAL SECTION N#2 - 12'-0" x 5'-0" REINFC. CONC. CULVERT

MARK	SIZE	DETAIL	APPROX LENGTH	NO REQ'D.
800b	1"		15'-10"	42
801b	1"		23'-8"	40
G00b	3/4"		8'-8"	40
G01b	3/4"	STRAIGHT	6'-0"	40
G02b	3/4"	(DOWEL)	4'-10"	40
G03b	3/4"	-	13'-8"	20
G04b	3/4"		23'-0"	20
500b	3/4"	STRAIGHT LONGITUDINAL	19'-8"	64

NOTE: HOOKS TO BE STD. A.C.I. CODE HOOKS

NOTE: CONCRETE TO BE CLASS 2 OR 2 P CONCRETE.

NOTE: CORRECTNESS OF UNDERGROUND INFORMATION HEREIN SHOWN IS NOT GU. WARRNTED, AND MUST BE USED AT THE RISKER'S OWN RISK.

CITY OF CLEVELAND  
ENGINEERING DIVISION  
SAMUEL P. DAVID - DIRECTOR OF PUBLIC SERVICE  
PLAN FOR  
**PRATT AVE. RELIEF SEWER**

SCALE: 1" = 10' (VERTICAL)  
1" = 40' (HORIZONTAL)  
COUNT: NUMBER  
DATE: 2-6-51

LEG. PLANS APPROVED BY: [Signature]  
DATE: [Date]

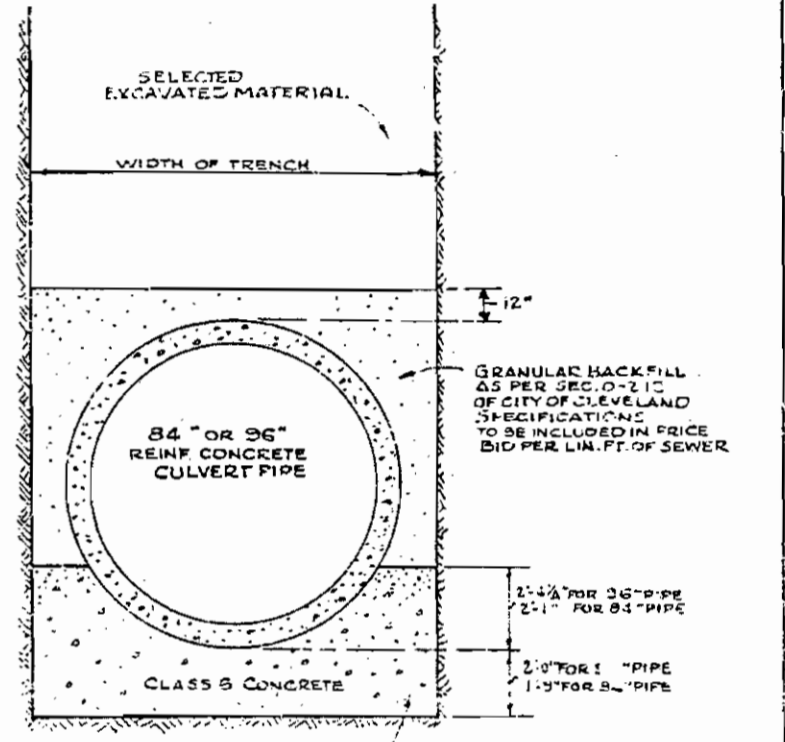
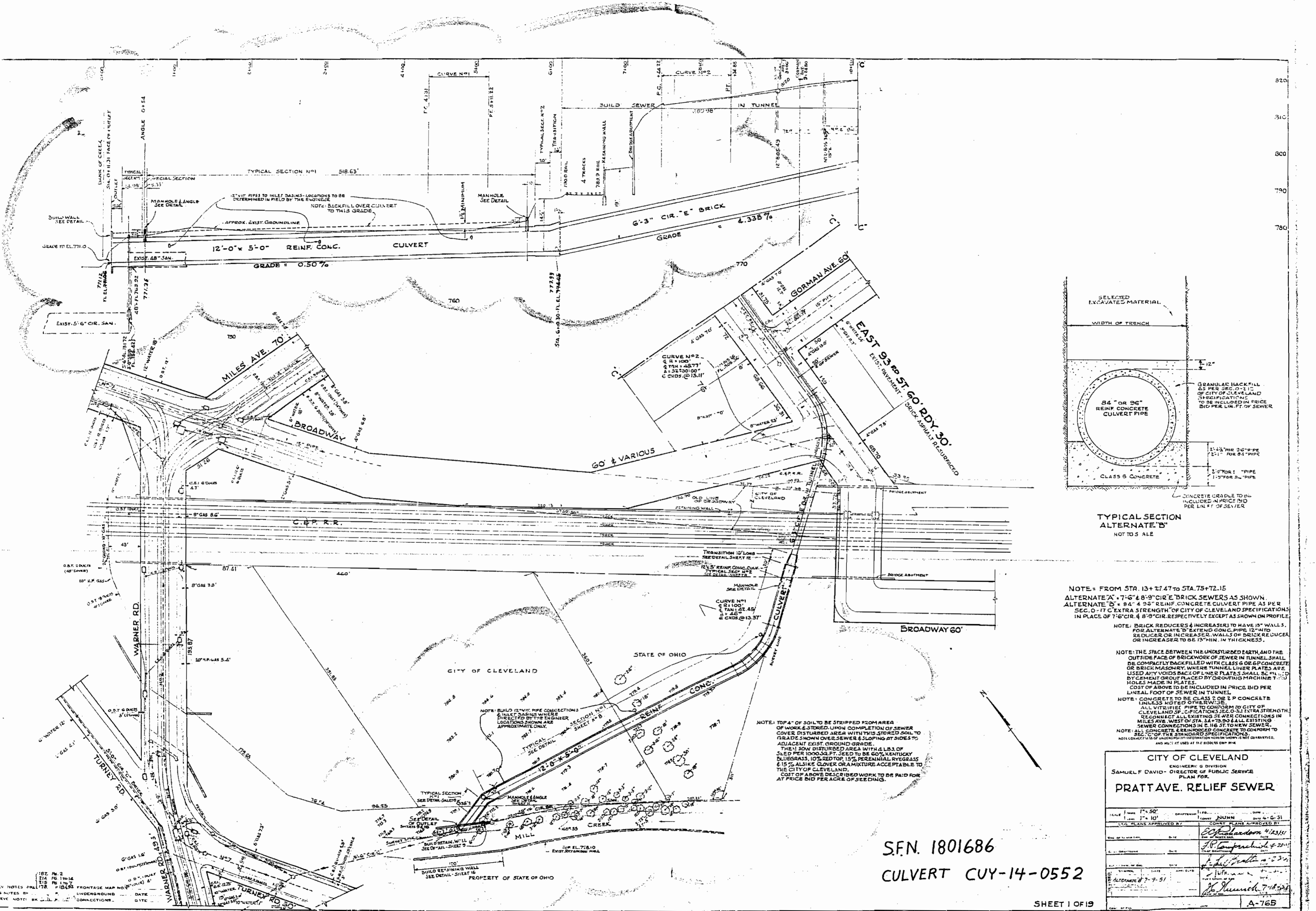
DATE: 2-6-51  
DATE: 2-6-51  
DATE: 7-8-51  
DATE: 7-8-51

DATE: 7-8-51  
DATE: 7-8-51  
DATE: 7-8-51

A-765

SFN. 1801686  
CULVERT CUY-14-0552

002221 ①



TYPICAL SECTION ALTERNATE "B" NOT TO SCALE

NOTE: FROM STA. 13+27.47 TO STA. 75+72.15 ALTERNATE "A" - 7'-6\"/>

NOTE: BRICK REDUCERS & INCREASERS TO HAVE 15\"/>

NOTE: THE SPACE BETWEEN THE UNDISTURBED EARTH, AND THE OUTSIDE FACE OF BRICKWORK OF SEWER IN TUNNEL SHALL BE COMPACTLY BACKFILLED WITH CLASS 6 OR 6P CONCRETE OR BRICK MASONRY. WHERE TUNNEL LINER PLATES ARE USED ANY VOIDS BACK OF LINER PLATES SHALL BE FILLED BY CEMENT GROUT PLACED BY GROUTING MACHINE THROUGH HOLES MADE IN PLATES. COST OF ABOVE TO BE INCLUDED IN PRICE BID PER LINEAL FOOT OF SEWER IN TUNNEL.

NOTE: CONCRETE TO BE CLASS 2 OR 2P CONCRETE UNLESS NOTED OTHERWISE. ALL VITRIFIED PIPE TO CONFORM TO CITY OF CLEVELAND SPECIFICATIONS SEC. 0-311 EXTRA STRENGTH. RECONNECT ALL EXISTING SEWER CONNECTIONS IN MILES AVE. WEST OF STA. 34+79.90 & ALL EXISTING SEWER CONNECTIONS IN E. 115 ST. TO NEW SEWER.

NOTE: ALL CONCRETE & REINFORCED CONCRETE TO CONFORM TO SEC. 0-17 OF THE STANDARD SPECIFICATIONS. NOTE: CONTRACTORS OF UNDERGROUND INFORMATION HEREIN SHOWN IS NOT GUARANTEED, AND MUST BE USED AT THE CONTRACTOR'S OWN RISK.

NOTE: TOP 4\"/>

S.F.N. 1801686  
 CULVERT CUY-14-0552

CITY OF CLEVELAND	
ENGINEER: G. DIVISION	
SAMUEL F. DAVID - DIRECTOR OF PUBLIC SERVICE	
PLAN FOR	
PRATT AVE. RELIEF SEWER	
SCALE: 1\"/>	DATE: 4-23-51
DESIGNED BY: E.C. Johnson	CHECKED BY: J.P. Thompson
DRAWN BY: J.P. Thompson	APPROVED BY: S.F. David
DATE: 4-23-51	DATE: 7-18-51
SHEET 1 OF 19	
A-765	