

STRUCTURE GENERAL NOTES:

MAINTENANCE OF TRAFFIC:
 SEE THE ROADWAY PLANS FOR MAINTENANCE OF TRAFFIC REQUIREMENTS.

EXISTING STRUCTURE VERIFICATION:
 DETAILS AND DIMENSIONS SHOWN ON THESE PLANS PERTAINING TO THE EXISTING STRUCTURE HAVE BEEN OBTAINED FROM PLANS OF THE EXISTING STRUCTURE AND/OR FIELD MEASUREMENTS. THEY ARE INDICATIVE OF THE EXISTING STRUCTURE AND PROPOSED WORK, BUT THEY SHALL BE CONSIDERED TENTATIVE AND APPROXIMATE. THE CONTRACTOR IS REFERRED TO CMS SECTION 102.05, 105.02 AND 513.04. BASE CONTRACT BID PRICES UPON A RECOGNITION OF THE UNCERTAINTIES DESCRIBED ABOVE AND UPON A PREBID EXAMINATION OF THE EXISTING STRUCTURES. HOWEVER, THE DEPARTMENT WILL PAY FOR ALL PROJECT WORK BASED UPON ACTUAL DETAILS AND DIMENSIONS THAT HAVE BEEN VERIFIED IN THE FIELD.

EXISTING STRUCTURE PLANS:
 CONSTRUCTION PLANS FOR EXISTING STRUCTURES ARE ON FILE AT THE DEPARTMENT OF TRANSPORTATION DISTRICT 12 OFFICE, 5500 E. 98TH ST., GARFIELD HEIGHTS, OHIO AND ARE AVAILABLE FOR REFERENCE.

SEQUENCE OF CONSTRUCTION:
 SEE MOT NOTES IN ROADWAY PLANS.

PORTIONS OF STRUCTURE REMOVED, OVER 20 FOOT SPAN, AS PER PLAN:
 THIS ITEM SHALL INCLUDE THE ELEMENTS INDICATED IN THE PLANS AND GENERAL NOTES AND THAT ARE NOT SEPARATELY LISTED FOR PAYMENT. LIMITS OF REMOVAL SHALL BE AS SHOWN ON THE PLANS FOR BRIDGE E5 OR AS DIRECTED BY THE ENGINEER. ITEMS TO BE REMOVED INCLUDE THE SUBSTRUCTURE FOUNDATION PILES THAT INTERFERE WITH NEW CONSTRUCTION AND MISCELLANEOUS ITEMS THAT ARE NOT SHOWN TO BE INCORPORATED INTO THE FINAL CONSTRUCTION AND ARE DIRECTED TO BE REMOVED BY THE ENGINEER. SUBMIT WORKING DRAWINGS AND CALCULATIONS IN ACCORDANCE WITH CMS 501.55.

ALL CONCRETE, REINFORCING STEEL, ASPHALT, ETC. REMOVED FROM THE STRUCTURE AND NOT REUSED SHALL, UNLESS OTHERWISE SPECIFIED, BECOME THE PROPERTY OF THE CONTRACTOR AND SHALL BE REMOVED BY HIM/HER FROM THE SITE. THE MATERIALS SHALL NOT BE PERMITTED TO REMAIN ON SITE, WITHIN THE RIGHT-OF-WAY OR ELSEWHERE UNLESS SPECIFIED BY THE ENGINEER.

THE USE OF EXPLOSIVES AND HEADACHE BALLS WILL NOT BE PERMITTED. THE METHOD OF REMOVAL AND THE WEIGHT OF HAMMER SHALL BE APPROVED BY THE ENGINEER. PERFORM ALL WORK IN A MANNER THAT WILL NOT CUT, ELONGATE, OR DAMAGE THE EXISTING REINFORCING STEEL TO BE PRESERVED.

A LUMP SUM QUANTITY HAS BEEN CARRIED TO THE GENERAL SUMMARY FOR ITEM 202 - PORTIONS OF STRUCTURE REMOVED, OVER 20 FOOT SPAN, AS PER PLAN.

REMOVAL PLAN

LEGEND:

- = PHASE 4 REMOVAL
- = PHASE 7 REMOVAL
- = PHASE 9 REMOVAL
- "A" = VARIES FROM 1'-10"± TO 12'-9"± PHASE 4 REMOVAL
- "B" = VARIES FROM 50'-9"± TO 51'-4"± PHASE 7 REMOVAL
- "C" = 51'-11"± PHASE 9 REMOVAL

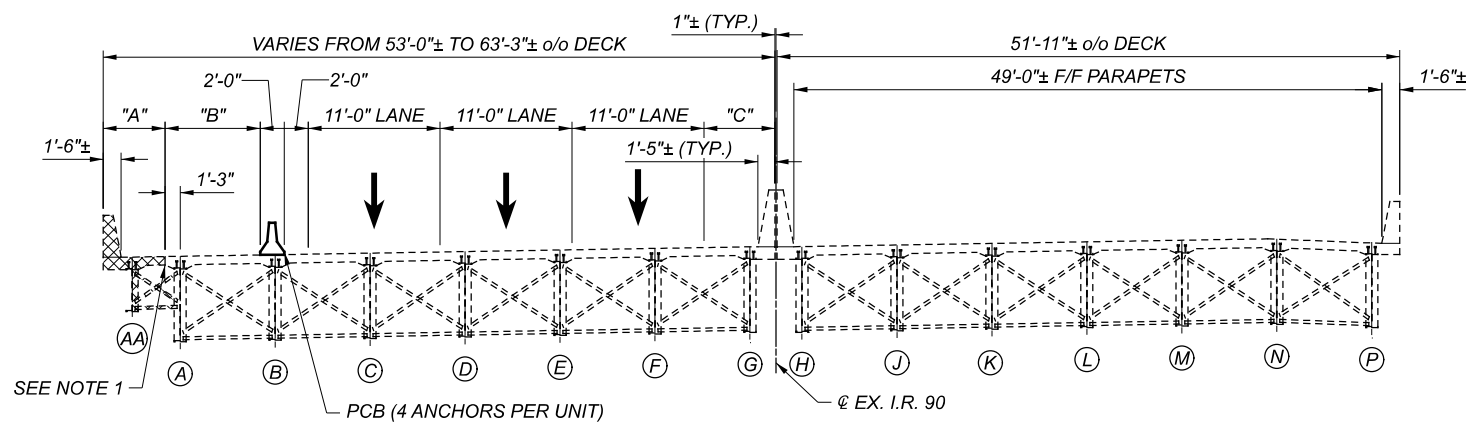
NOTES:

1. SEE SHEET 2/7 FOR PHASED MOT AND REMOVAL DETAILS.
2. SEE SHEET 3/7 FOR ABUTMENT AND PIER REMOVAL DETAILS.
3. FULL DEPTH SAWCUT SHALL FOLLOW EX. GIRDER A AT AN OFFSET OF 1'-3" FROM THE @ TO THE NORTH FOR THE FULL LENGTH OF BRIDGE.
4. REMOVE EX. MEDIAN ANCHORED PCB FROM BEGINNING OF REAR APPROACH SLAB TO @ EX. I.R. 90 STA. 66+61.00 IN PHASE 4.
5. SEE SHEET 5/7 FOR TEMPORARY SHORING DETAILS. REMOVE PORTIONS OF EXISTING APPROACH SLABS REQUIRED TO INSTALL PROPOSED TEMPORARY SHORING IN PHASE 7.
6. SEE SHEET 2/7 FOR LOCATION OF PCB.

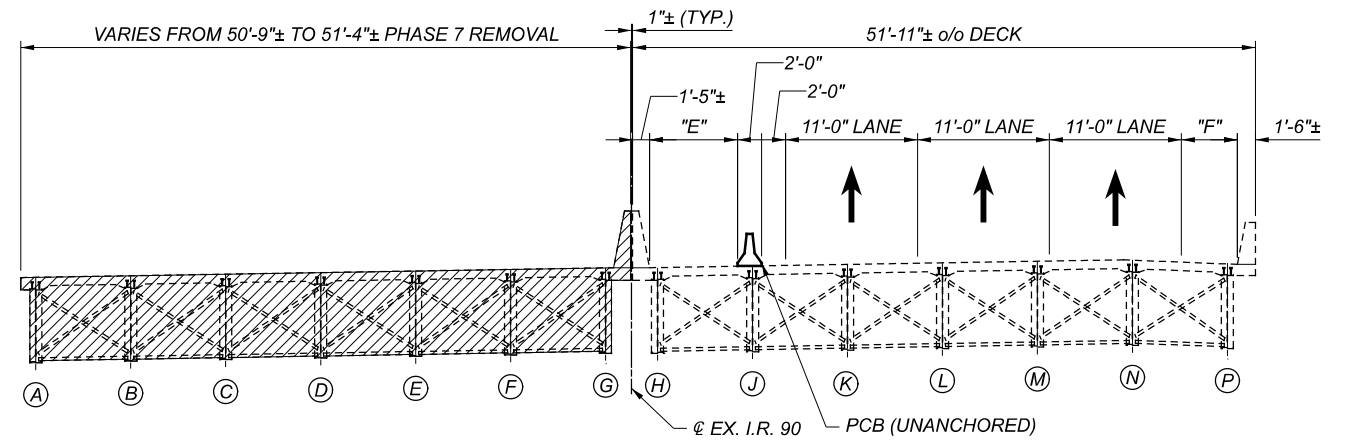
EXISTING STRUCTURE

TYPE: CONTINUOUS WELDED STEEL GIRDER WITH COMPOSITE REINFORCED CONCRETE DECK AND SUBSTRUCTURE	SFN 1807773
SPANS: 89'-11 ⁷ / ₈ "±, 125'-0 ¹ / ₄ "±, 88'-4 ³ / ₈ "± c/c BEARINGS (MEASURED ALONG EX. REFERENCE CHORD)	DESIGN AGENCY
ROADWAY: VARIES 62'-3 ⁵ / ₈ "± TO 50'-1"± (LEFT STRUCTURE) T/T PARAPETS 49'-0"± (RIGHT STRUCTURE) T/T PARAPETS	BURGESS & NIPLE 100 WEST ERIE STREET PARANVILLE, OHIO 44077
LOADING: HS20 CASE 1 AND ALTERNATE MILITARY LOADING WITH A FUTURE WEARING SURFACE (FWS) OF 60 PSF	DESIGNER CHECKER KMA JAA
SKEW: VARIES	REVIEWER DWL 06/02/22
WEARING SURFACE: 1" MONOLITHIC CONCRETE	PROJECT ID 82382
APPROACH SLABS: AS-1-81 (MODIFIED) (25 FEET LONG)	SUBSET TOTAL 1 7
ALIGNMENT: 01°30'00" CURVE LEFT	SHEET TOTAL 1956 2339
CROWN: 0.03 FT PER FT (SUPERELEVATED)	
STRUCTURE FILE NUMBER: 18067773	
DATE BUILT: 1963, 2011 REHABILITATION, 2014 WIDENING	
DISPOSITION: TO BE REMOVED	

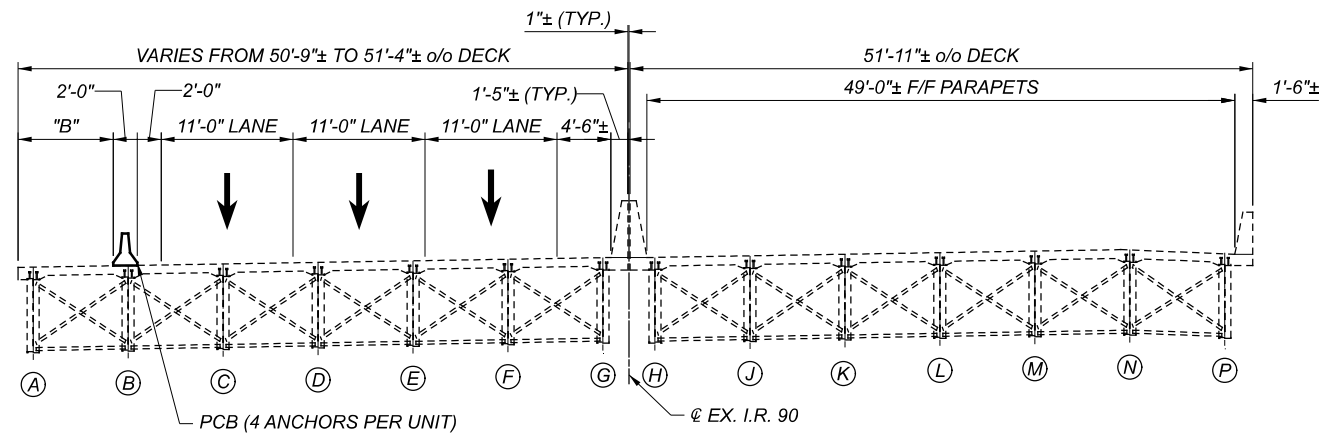
REMOVAL PLAN
CUY-90-1640 (BRIDGE E5)
I.R. 90 OVER I.R. 77 SB RAMPS



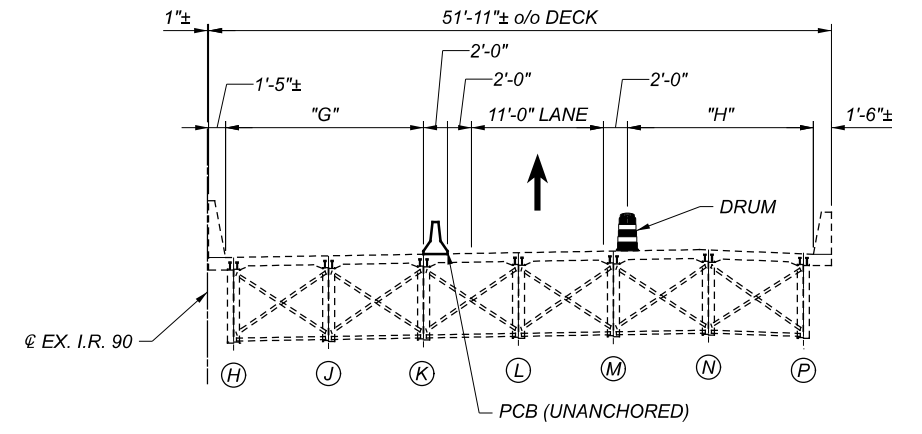
PHASE 4 REMOVAL AND MOT



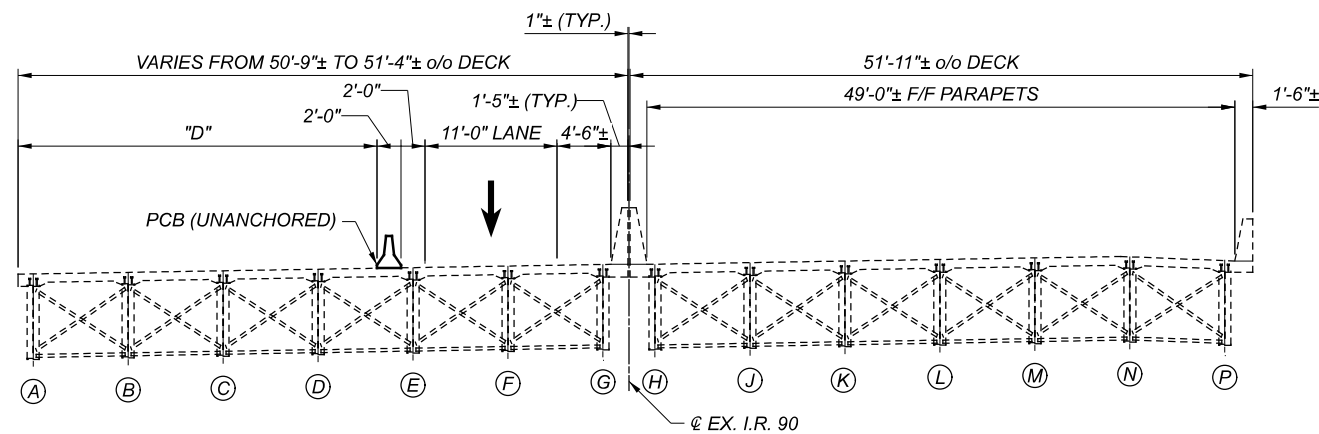
PHASE 7 REMOVAL AND MOT



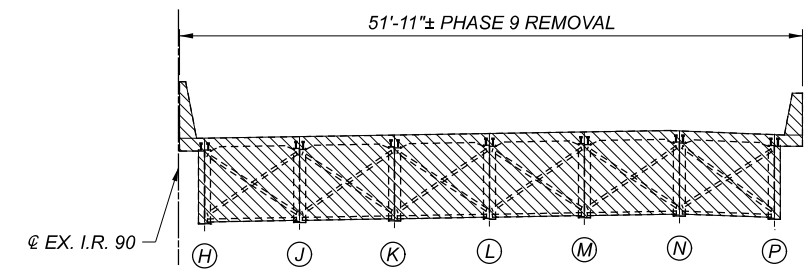
PHASE 5 MOT



PHASE 8 MOT



PHASE 6 MOT



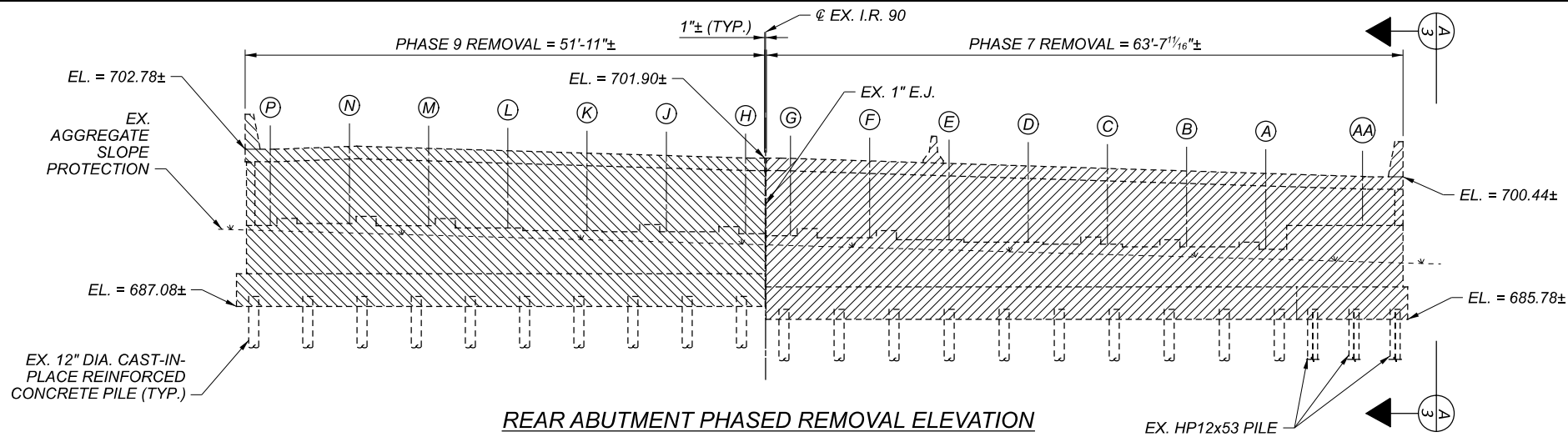
PHASE 9 REMOVAL

NOTES:

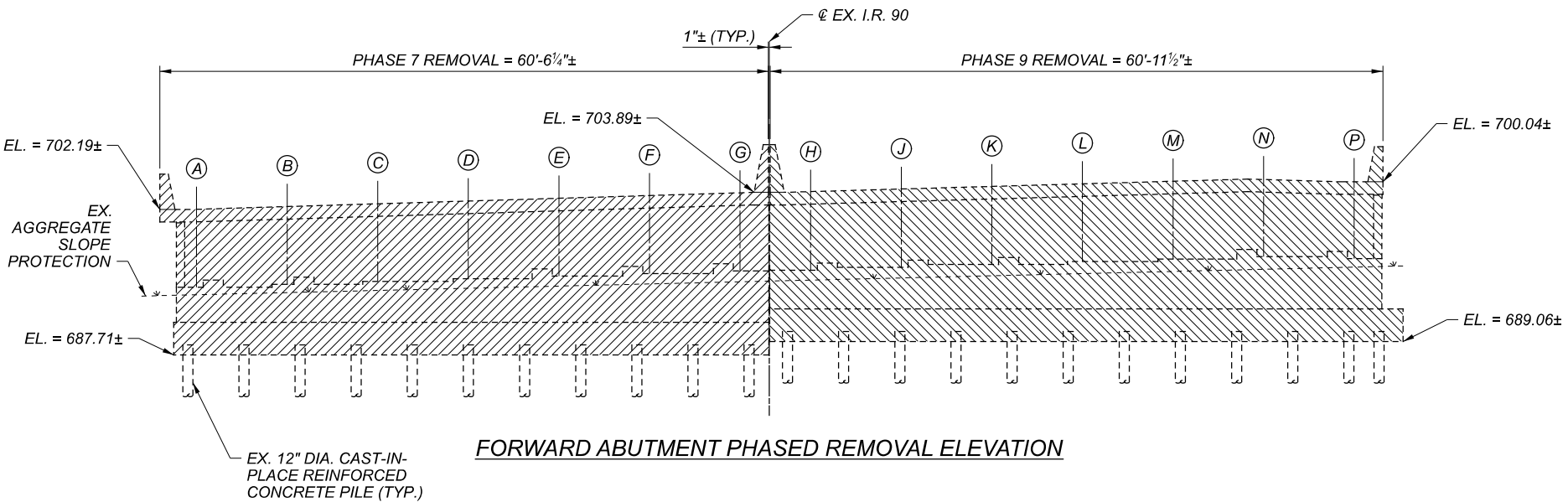
- PROPOSED FULL DEPTH SAWCUT AND PHASE REMOVAL LINE LOCATION. SAWCUT SHALL BE PARALLEL WITH ϕ GIRDER A FOR THE FULL BRIDGE LENGTH. REMOVE GIRDER AA AND ITS CROSSFRAME CONNECTIONS TO GIRDER A IN PHASE 4.
- SEE SHEET 1956/2339 FOR EXISTING MEDIAN PARAPET DETAILS. THE MEDIAN PARAPETS SHOWN ON THIS SHEET ARE FOR THE TYPICAL EXISTING CONDITION.

LEGEND:

- = PHASE 4 REMOVAL
- = PHASE 7 REMOVAL
- = PHASE 9 REMOVAL
- (A) = EXISTING GIRDER LETTER
- "A" = VARIES FROM 1'-10"± TO 12'-9"± PHASE 4 REMOVAL
- "B" = VARIES FROM 1'-5"± TO 8'-3"±
- "C" = VARIES FROM 4'-6"± TO 12'-4"±
- "D" = 29'-11"± TO 32'-4"±
- "E" = VARIES FROM 7'-4"± TO 8'-11"±
- "F" = VARIES FROM 2'-3"± TO 1'-8"±
- "G" = VARIES FROM 12'-10"± TO 18'-5"±
- "H" = VARIES FROM 12'-6"± TO 17'-10"±



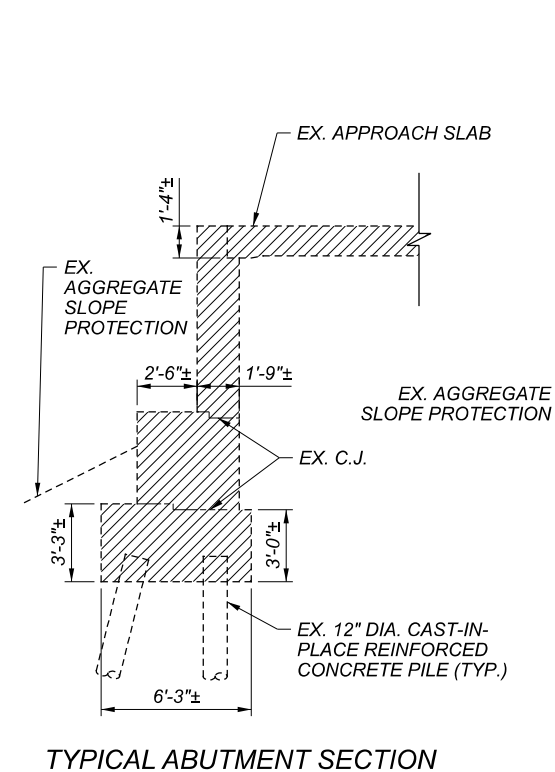
REAR ABUTMENT PHASED REMOVAL ELEVATION



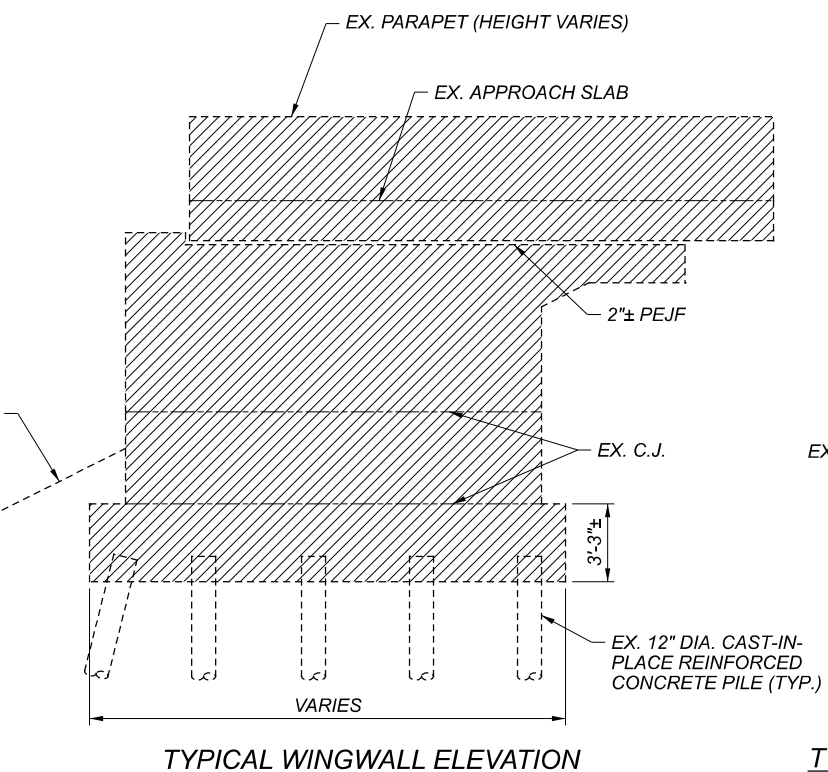
FORWARD ABUTMENT PHASED REMOVAL ELEVATION

LEGEND:

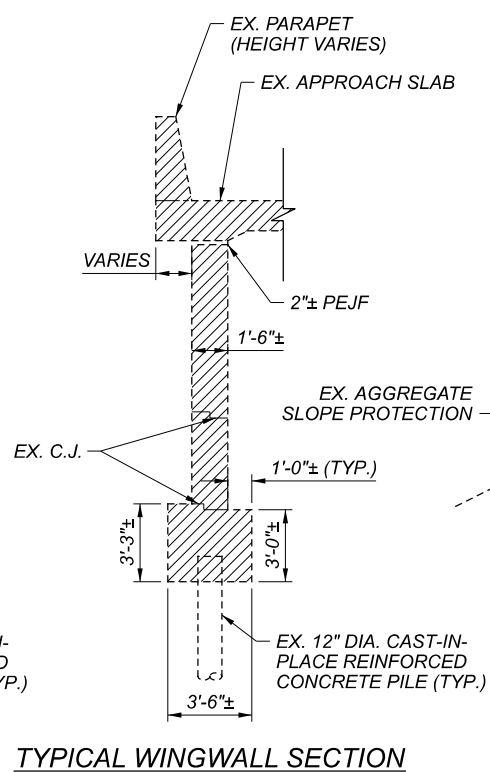
- = PHASE 7 REMOVAL
- = PHASE 9 REMOVAL
- = EXISTING GIRDER LETTER



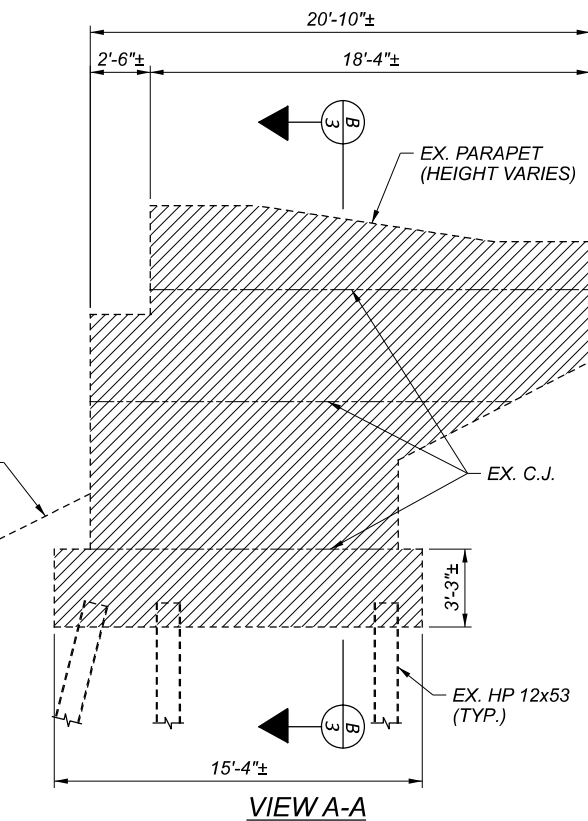
TYPICAL ABUTMENT SECTION



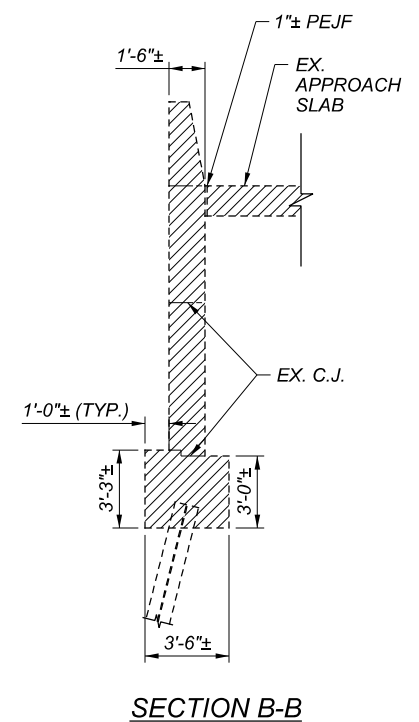
TYPICAL WINGWALL ELEVATION



TYPICAL WINGWALL SECTION



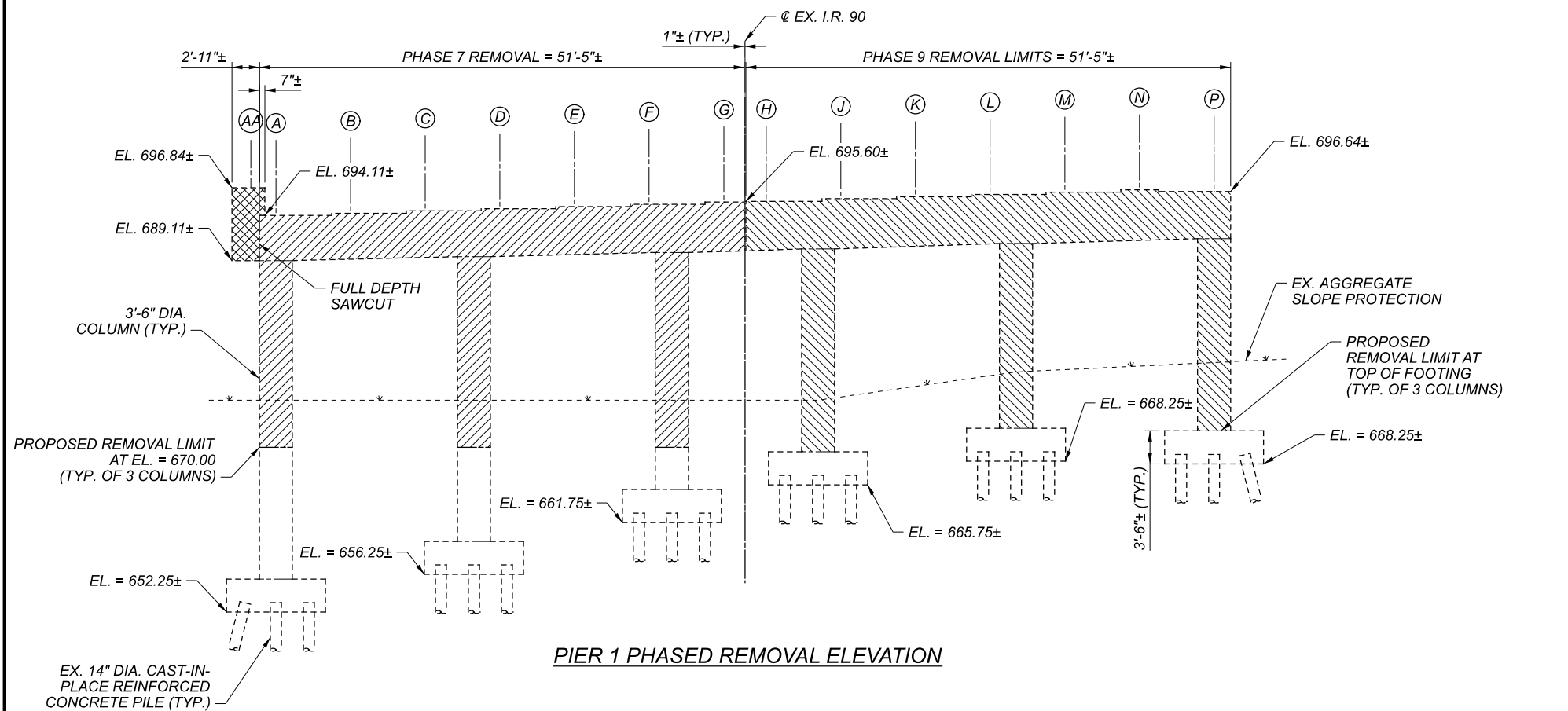
VIEW A-A



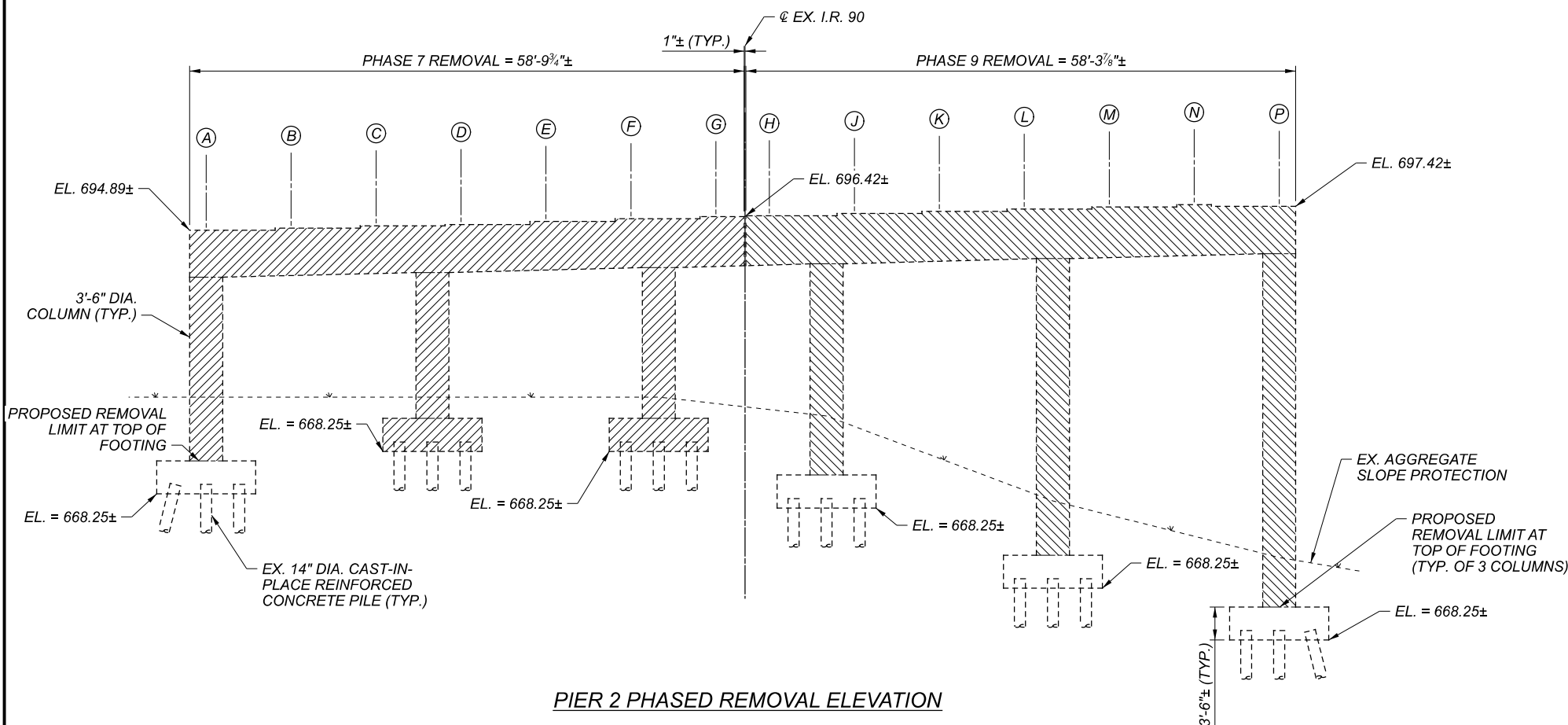
SECTION B-B

ABUTMENT PHASED REMOVAL DETAILS
 CUY-90-1640 (BRIDGE E5)
 I.R. 90 OVER I.R. 77 SB RAMPS

SFN	1807773
DESIGN AGENCY	
BURGESS & NIPLE	
100 WEST EIRE STREET PARANVILLE, OHIO 44077	
DESIGNER/CHECKER	KMA / JAA
REVIEWER	DWL 06/17/22
PROJECT ID	82382
SUBSET	TOTAL
3	7
SHEET	TOTAL
1958	2339



PIER 1 PHASED REMOVAL ELEVATION



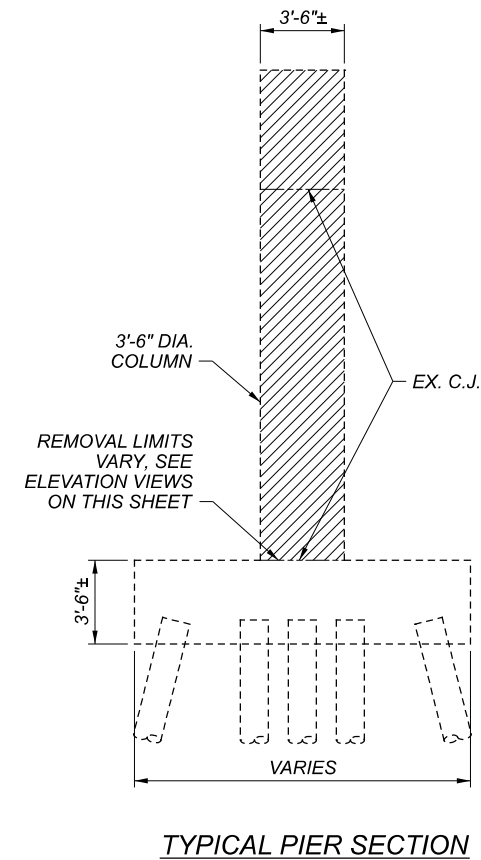
PIER 2 PHASED REMOVAL ELEVATION

LEGEND:

- = PHASE 4 REMOVAL
- = PHASE 7 REMOVAL
- = PHASE 9 REMOVAL
- = EXISTING GIRDER LETTER

NOTES:

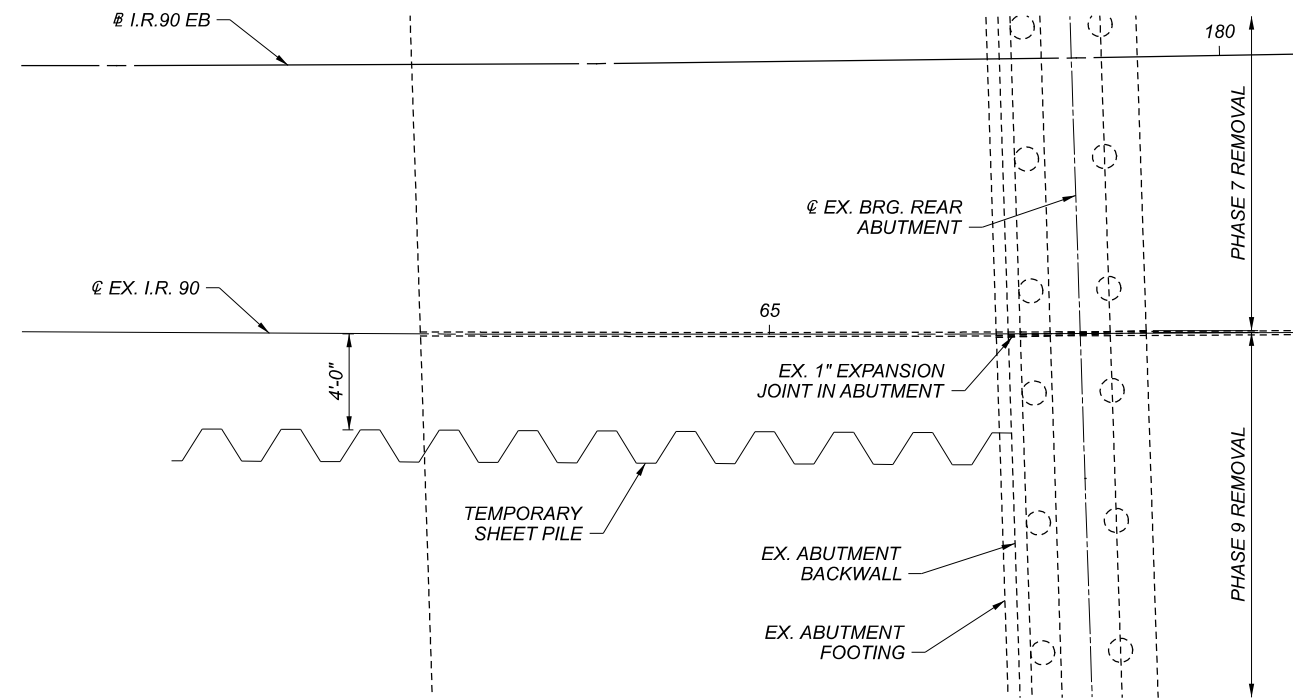
1. THE EXISTING PIER COLUMN AND FOOTING REMOVAL LIMITS SHOWN REPRESENT THE LIMITS REQUIRED TO CONSTRUCT THE PROPOSED LIGHTWEIGHT FILL. THE CONTRACTOR SHALL VERIFY THESE LIMITS AND MAY ADJUST THEM, AT NO ADDITIONAL COST TO THE PROJECT, TO ACCOMMODATE THE CONSTRUCTION OF THE PROPOSED LIGHTWEIGHT FILL.



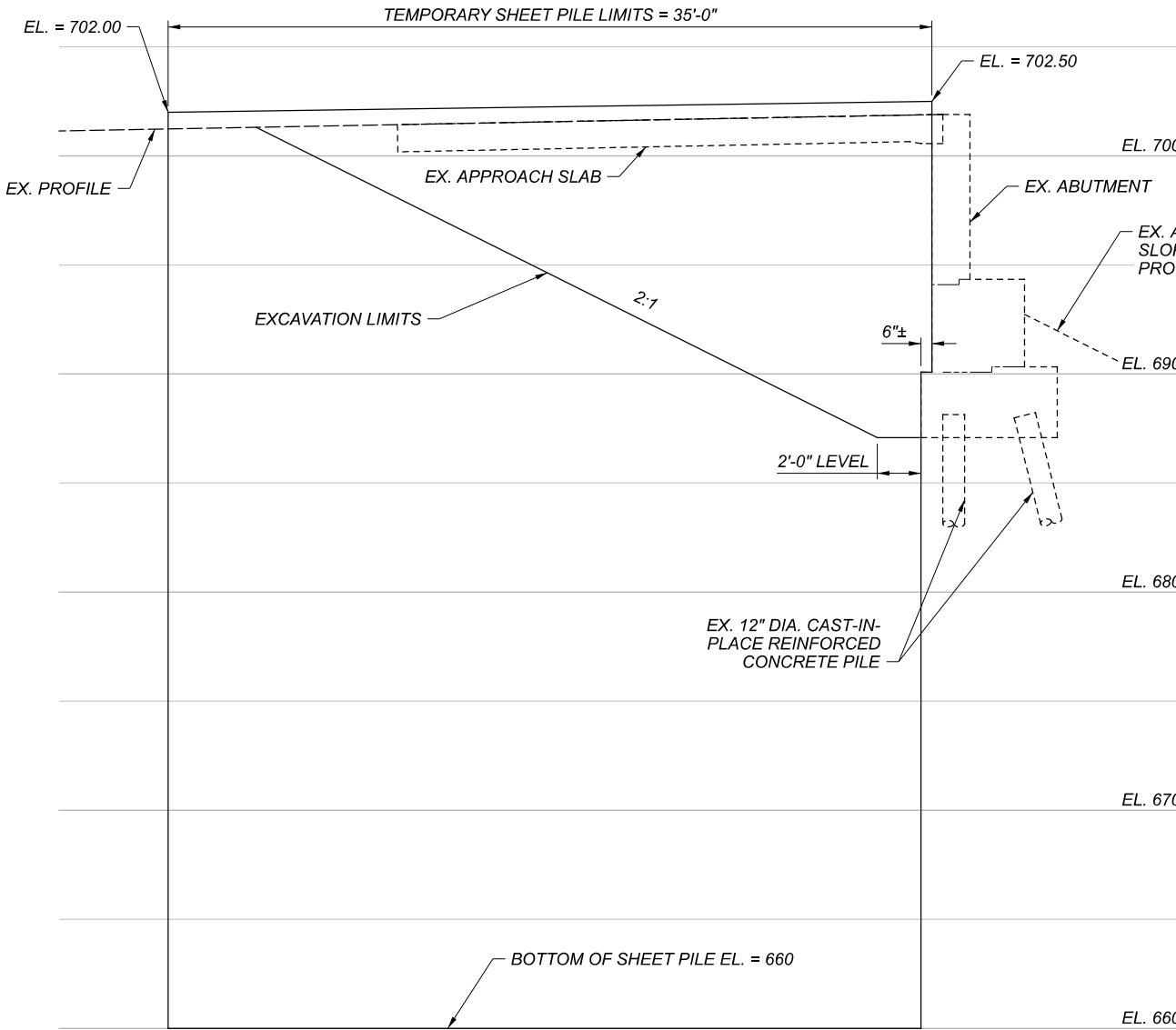
TYPICAL PIER SECTION

SFN	1807773
DESIGN AGENCY	
DESIGNER	KMA
CHECKER	JAA
REVIEWER	DWL
DATE	06/17/22
PROJECT ID	82382
SUBSET	4
TOTAL	7
SHEET	1959
TOTAL	2339

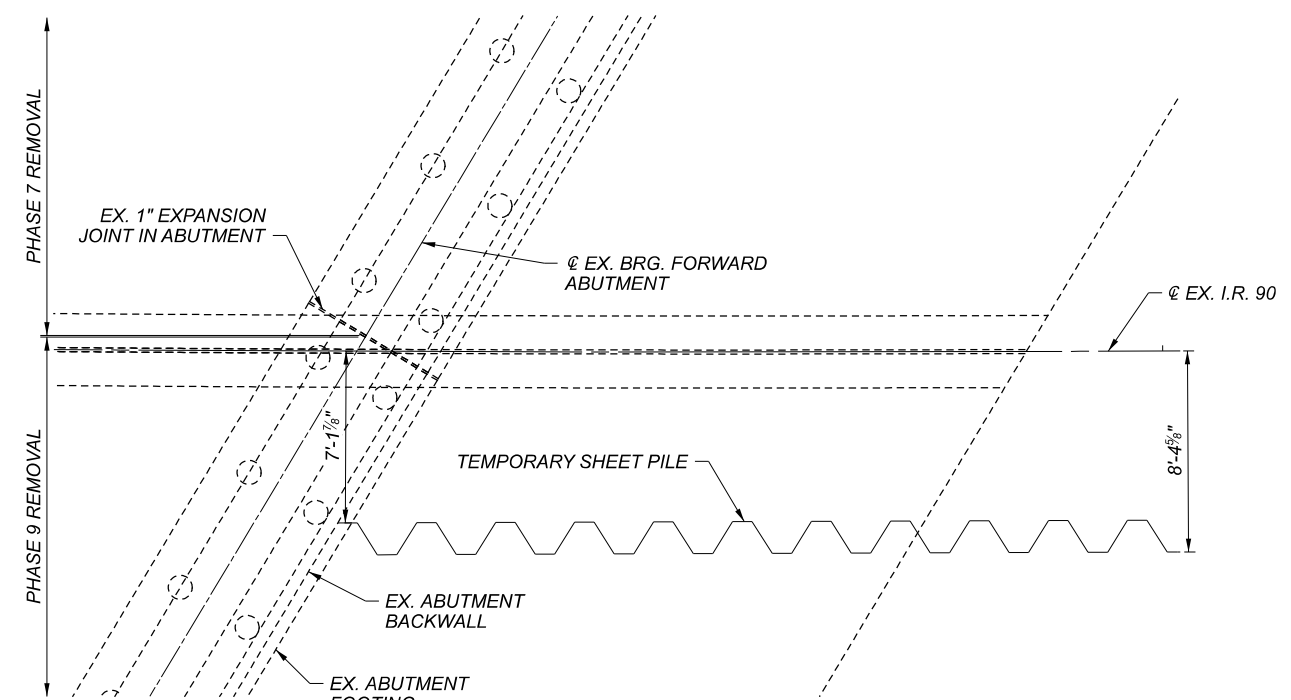
BURGESS & NIPLE
 100 WEST ERIE STREET
 PARANVILLE, OHIO 44077



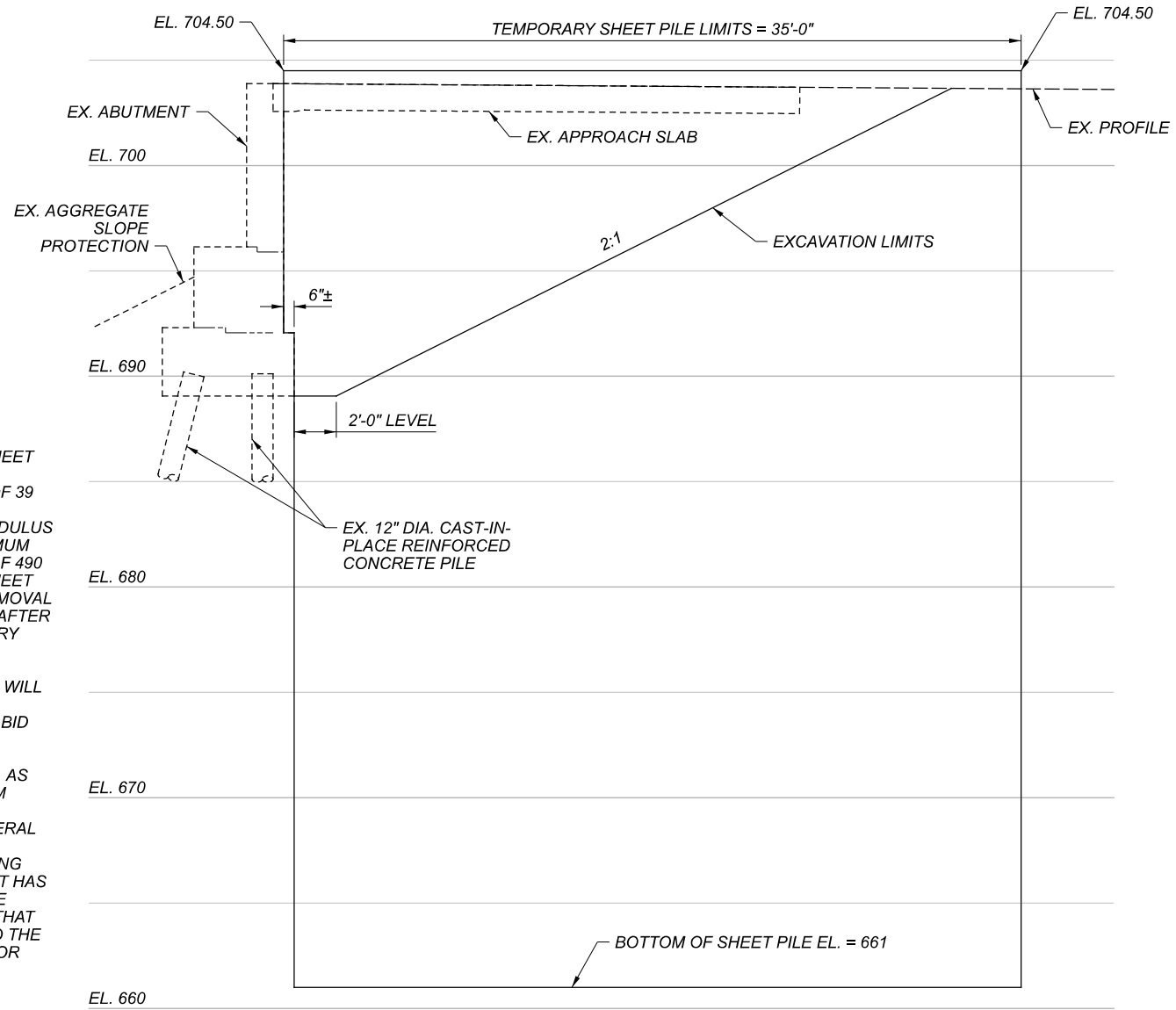
REAR ABUTMENT PLAN



REAR ABUTMENT ELEVATION



FORWARD ABUTMENT PLAN



FORWARD ABUTMENT ELEVATION

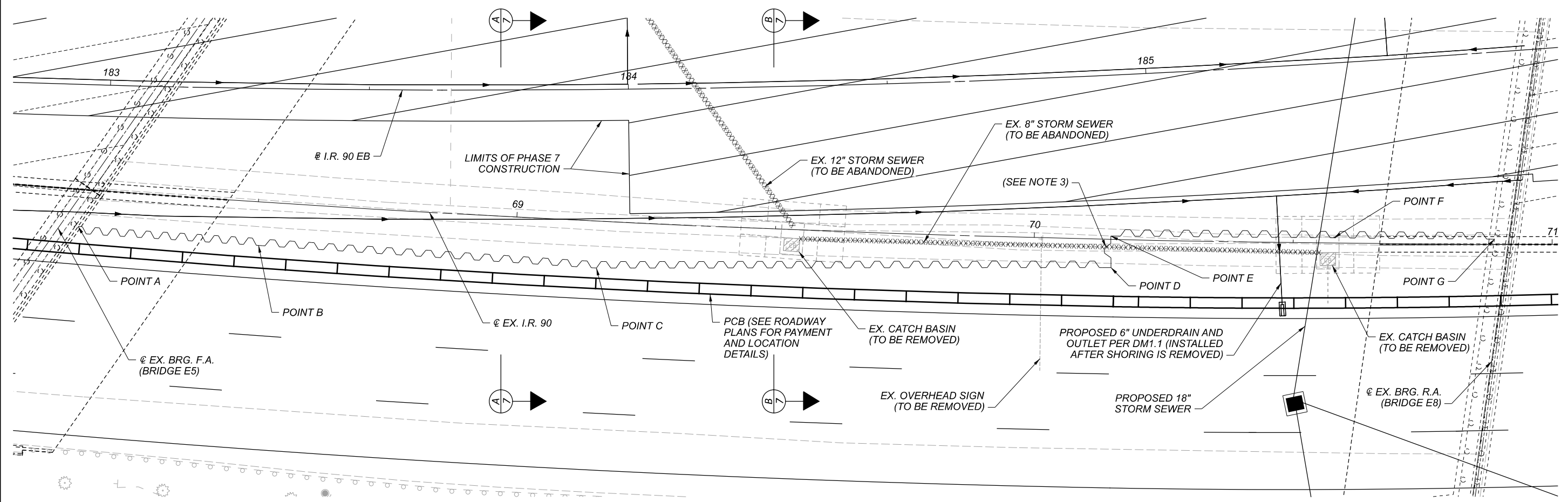
NOTES:

1. TEMPORARY STEEL SHEET PILING SHALL HAVE A MINIMUM STRENGTH OF 39 KSI AND SHALL HAVE A MINIMUM SECTION MODULUS OF 60 IN³ AND A MINIMUM MOMENT OF INERTIA OF 490 IN⁴. PAYMENT FOR SHEET PILING, INCLUDING REMOVAL OF ALL COMPONENTS AFTER NO LONGER NECESSARY AND ALL OTHER ITEMS ASSOCIATED WITH TEMPORARY SHORING WILL BE INCLUDED IN THE CONTRACT LUMP SUM BID PRICE FOR ITEM 503 - COFFERDAMS AND EXCAVATION BRACING, AS PER PLAN. A LUMP SUM QUANTITY HAS BEEN CARRIED TO THE GENERAL SUMMARY. THE WORK REQUIRED FOR SHORING SHOWN ON THIS SHEET HAS BEEN INCLUDED IN THE LUMP SUM QUANTITY THAT HAS BEEN CARRIED TO THE GENERAL SUMMARY FOR EXISTING BRIDGE E5.
2. SEE SHEET 6/7 FOR SHORING LOCATION AND OTHER DETAILS.

SFN	1807773
DESIGN AGENCY	
BURGESS & NIPLE	
100 WEST ERIE STREET PARANVILLE, OHIO 44077	
DESIGNER	CHECKER
KMA	JAA
REVIEWER	
DWL	06/17/22
PROJECT ID	82382
SUBSET	TOTAL
5	7
SHEET	TOTAL
1960	2339

CUY-90-16.28 (CCG3A)

MODEL: Sheet PAPER: 17x11 (in.) DATE: 6/22/2022 TIME: 8:38:39 PM USER: Mala.Gallagher
 p:\mb-us-pw\beniley.com\mb-us-pw-03\Documents\Cleveland_OH101_Projects\ODOT\District12\232382400-Engineering\Structures\SFN_1807773_Sheets\82382_SFN_1807773_SH002.dgn

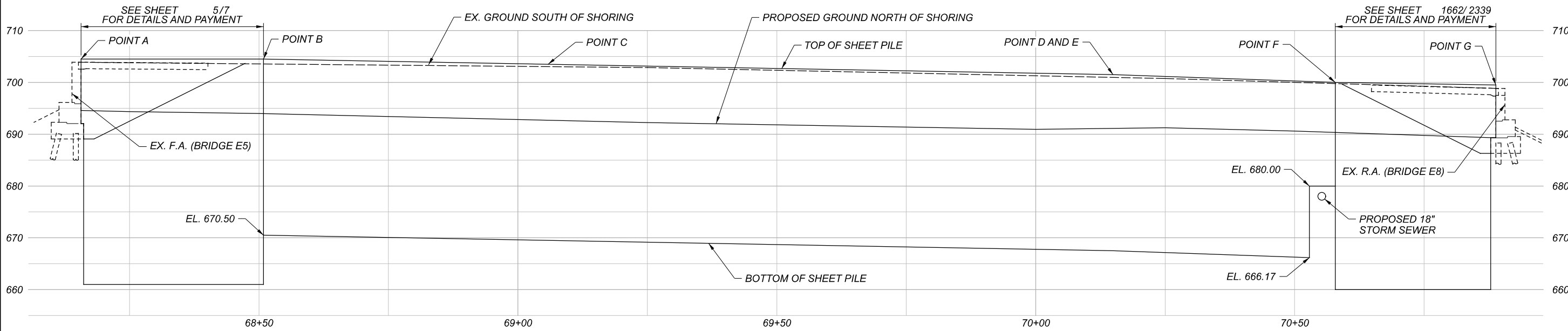


TEMPORARY SHORING INFORMATION						
LOCATION POINT	SHORING TYPE	ALIGNMENT	STATION	OFFSET	TOP OF SHORING EL.	BOTTOM OF SHORING EL.
A	STEEL SHEET PILE	CL EX. I.R. 90	68+15.64	7.16' RT	704.50	661.00
B	STEEL SHEET PILE	CL EX. I.R. 90	68+50.88	8.38' RT	704.50	661.00 / 670.50
C	STEEL SHEET PILE	CL EX. I.R. 90	69+15.82	9.04' RT	703.50	669.50
D	STEEL SHEET PILE	CL EX. I.R. 90	70+14.93	5.42' RT	701.50	667.50
E	STEEL SHEET PILE	CL EX. I.R. 90	70+14.77	0.66' LT	701.50	667.50
F	STEEL SHEET PILE	CL EX. I.R. 90	70+57.84	1.00' LT	700.00	680.00 / 660.00
G	STEEL SHEET PILE	CL EX. I.R. 90	70+88.86	1.00' LT	699.50	660.00

TEMPORARY SHORING PLAN

NOTES:

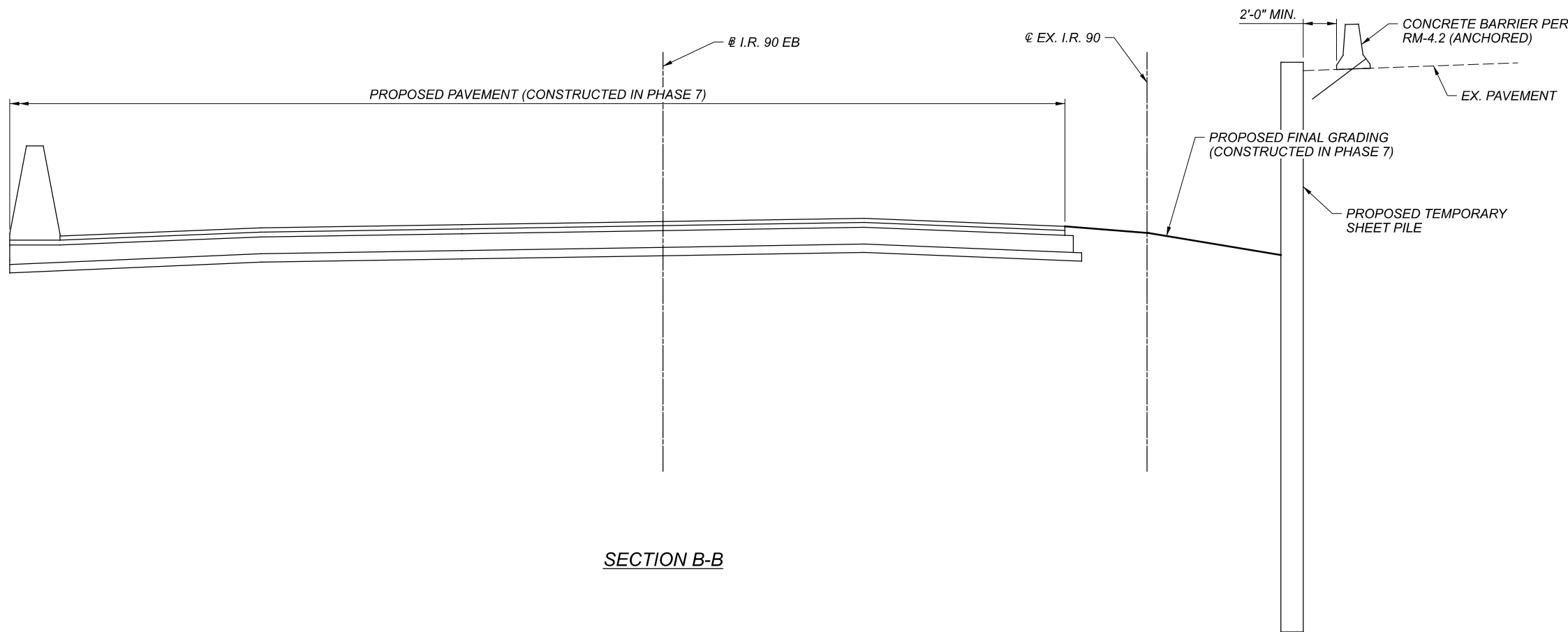
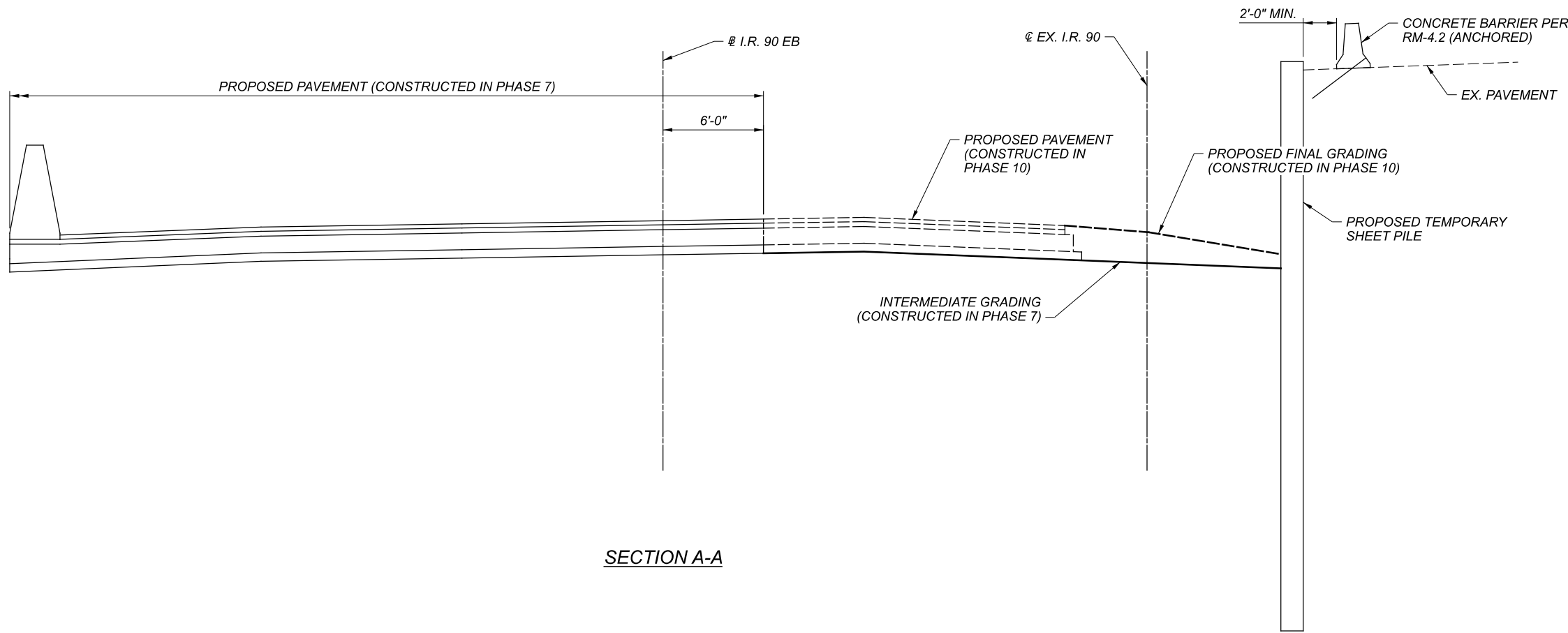
- TEMPORARY STEEL SHEET PILING SEGMENTS BETWEEN POINT B-F SHALL HAVE A MINIMUM STRENGTH OF 39 KSI AND SHALL HAVE A MINIMUM SECTION MODULUS OF 48 IN³ AND A MINIMUM MOMENT OF INERTIA OF 361 IN⁴.
- PAYMENT FOR SHEET PILING, INCLUDING REMOVAL OF ALL COMPONENTS AFTER NO LONGER NECESSARY AND ALL OTHER ITEMS ASSOCIATED WITH TEMPORARY SHORING WILL BE INCLUDED IN THE CONTRACT LUMP SUM BID PRICE FOR ITEM 503 - COFFERDAMS AND EXCAVATION BRACING, AS PER PLAN. THE WORK REQUIRED FOR SHORING SEGMENTS BETWEEN POINTS B-F HAS BEEN INCLUDED IN THE LUMP SUM QUANTITY THAT HAS BEEN CARRIED TO THE GENERAL SUMMARY FOR EXISTING BRIDGE E5.
- REMOVE PORTION OF EX. 8" STORM SEWER IN CONFLICT WITH SHORING AS NECESSARY.
- TEMPORARY SHORING SHOWN SHALL BE INSTALLED IN PHASE 7 AND REMOVED IN PHASE 9.



TEMPORARY SHORING ELEVATION ALONG CL EX. I.R. 90

I.R. 90 MEDIAN TEMPORARY SHORING PLAN AND ELEVATION
 CUY-90-1640 (BRIDGE E5)
 I.R. 90 OVER I.R. 77 SB RAMP

SFN	1807773
DESIGN AGENCY	BURGESS & NIPLE 100 WEST EBE STREET PARADESVILLE, OHIO 44077
DESIGNER/CHECKER	KMA / JAA
REVIEWER	DWL 06/17/22
PROJECT ID	82382
SUBSET	6
TOTAL	7
SHEET	1961
TOTAL	2339

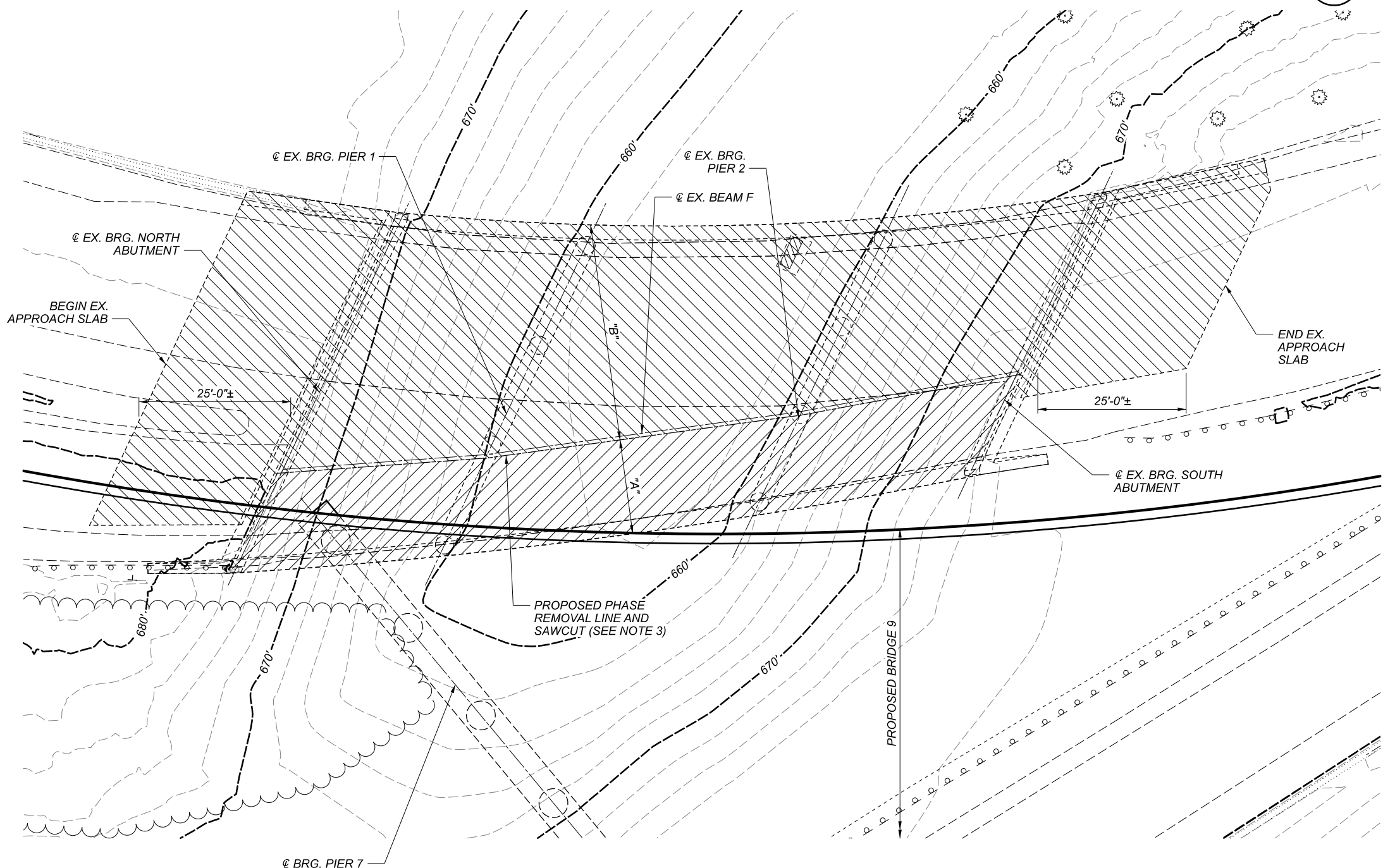


NOTES:

1. SEE SHEET 6/7 FOR LOCATION OF SECTIONS A-A AND B-B.
2. PAYMENT FOR SHEET PILING, INCLUDING REMOVAL OF ALL COMPONENTS AFTER NO LONGER NECESSARY AND ALL OTHER ITEMS ASSOCIATED WITH TEMPORARY SHORING WILL BE INCLUDED IN THE CONTRACT LUMP SUM BID PRICE FOR ITEM 503 - COFFERDAMS AND EXCAVATION BRACING, AS PER PLAN. THE WORK REQUIRED FOR SHORING SHOWN ON THIS SHEET HAS BEEN INCLUDED IN THE LUMP SUM QUANTITY THAT HAS BEEN CARRIED TO THE GENERAL SUMMARY FOR EXISTING BRIDGE E5.

I.R. 90 MEDIAN TEMPORARY SHORING DETAILS
 CUY-90-1640 (BRIDGE E5)
 I.R. 90 OVER I.R. 77 SB RAMPS

SFN	
1807773	
DESIGN AGENCY	
BURGESS & NIPLE 100 WEST ERIE STREET PARANVILLE, OHIO 44277	
DESIGNER	CHECKER
KMA	JAA
REVIEWER	
DWL 06/17/22	
PROJECT ID	
82382	
SUBSET	TOTAL
7	7
SHEET	TOTAL
1962	2339



REMOVAL PLAN

STRUCTURE GENERAL NOTES:

MAINTENANCE OF TRAFFIC:
 SEE THE ROADWAY PLANS FOR MAINTENANCE OF TRAFFIC REQUIREMENTS.

EXISTING STRUCTURE VERIFICATION:
 DETAILS AND DIMENSIONS SHOWN ON THESE PLANS PERTAINING TO THE EXISTING STRUCTURE HAVE BEEN OBTAINED FROM PLANS OF THE EXISTING STRUCTURE AND/OR FIELD MEASUREMENTS. THEY ARE INDICATIVE OF THE EXISTING STRUCTURE AND PROPOSED WORK, BUT THEY SHALL BE CONSIDERED TENTATIVE AND APPROXIMATE. THE CONTRACTOR IS REFERRED TO CMS SECTION 102.05, 105.02 AND 513.04. BASE CONTRACT BID PRICES UPON A RECOGNITION OF THE UNCERTAINTIES DESCRIBED ABOVE AND UPON A PREBID EXAMINATION OF THE EXISTING STRUCTURES. HOWEVER, THE DEPARTMENT WILL PAY FOR ALL PROJECT WORK BASED UPON ACTUAL DETAILS AND DIMENSIONS THAT HAVE BEEN VERIFIED IN THE FIELD.

EXISTING STRUCTURE PLANS:
 CONSTRUCTION PLANS FOR EXISTING STRUCTURES ARE ON FILE AT THE DEPARTMENT OF TRANSPORTATION DISTRICT 12 OFFICE, 5500 E. 98TH ST., GARFIELD HEIGHTS, OHIO AND ARE AVAILABLE FOR REFERENCE.

SEQUENCE OF CONSTRUCTION:
 SEE MOT NOTES IN ROADWAY PLANS.

PORTIONS OF STRUCTURE REMOVED, OVER 20 FOOT SPAN, AS PER PLAN:
 THIS ITEM SHALL INCLUDE THE ELEMENTS INDICATED IN THE PLANS AND GENERAL NOTES AND THAT ARE NOT SEPARATELY LISTED FOR PAYMENT. LIMITS OF REMOVAL SHALL BE AS SHOWN ON THE PLANS FOR BRIDGE E6 OR AS DIRECTED BY THE ENGINEER. ITEMS TO BE REMOVED INCLUDE THE SUBSTRUCTURE FOUNDATION PILES THAT INTERFERE WITH NEW CONSTRUCTION AND MISCELLANEOUS ITEMS THAT ARE NOT SHOWN TO BE INCORPORATED INTO THE FINAL CONSTRUCTION AND ARE DIRECTED TO BE REMOVED BY THE ENGINEER. SUBMIT WORKING DRAWINGS AND CALCULATIONS IN ACCORDANCE WITH CMS 501.55.

ALL CONCRETE, REINFORCING STEEL, ASPHALT, ETC. REMOVED FROM THE STRUCTURE AND NOT REUSED SHALL, UNLESS OTHERWISE SPECIFIED, BECOME THE PROPERTY OF THE CONTRACTOR AND SHALL BE REMOVED BY HIM/HER FROM THE SITE. THE MATERIALS SHALL NOT BE PERMITTED TO REMAIN ON SITE, WITHIN THE RIGHT-OF-WAY OR ELSEWHERE UNLESS SPECIFIED BY THE ENGINEER.

THE USE OF EXPLOSIVES AND HEADACHE BALLS WILL NOT BE PERMITTED. THE METHOD OF REMOVAL AND THE WEIGHT OF HAMMER SHALL BE APPROVED BY THE ENGINEER. PERFORM ALL WORK IN A MANNER THAT WILL NOT CUT, ELONGATE, OR DAMAGE THE EXISTING REINFORCING STEEL TO BE PRESERVED.

A LUMP SUM QUANTITY HAS BEEN CARRIED TO THE GENERAL SUMMARY FOR ITEM 202 - PORTIONS OF STRUCTURE REMOVED, OVER 20 FOOT SPAN, AS PER PLAN.

EXISTING STRUCTURE

TYPE: CONTINUOUS STEEL BEAM WITH REINFORCED CONCRETE DECK AND SUBSTRUCTURE	
SPANS: 31'-0 ³ / ₈ "±, 48'-2 ¹ / ₄ "±, 34'-1"± c/c BEARINGS MEASURED ALONG EX. ROADWAY: VARIES	
LOADING: CF - 2000 ADEQUATE FOR A.A.S.H.O. ALTERNATE LOADING	
SKEW: VARIES	
WEARING SURFACE: 1 ¹ / ₂ "± CONCRETE OVERLAY	
APPROACH SLABS: AS-1-54 (25 FEET LONG)	
ALIGNMENT: 14°30'00" CURVE LEFT	
CROWN: 0.08 FT PER FT (SUPERELEVATED)	
STRUCTURE FILE NUMBER: 1806939	
DATE BUILT: 1962, REHABILITATIONS	
DISPOSITION: TO BE REMOVED	
SFN	1806939
DESIGN AGENCY	BURGESS & NIPLE 100 WEST ERIE STREET PARMA, OHIO 44137
DESIGNER	CHECKER
KMA	JAA
REVIEWER	DWL
PROJECT ID	82382
SUBSET	TOTAL
1	3
SHEET	TOTAL
1963	2339

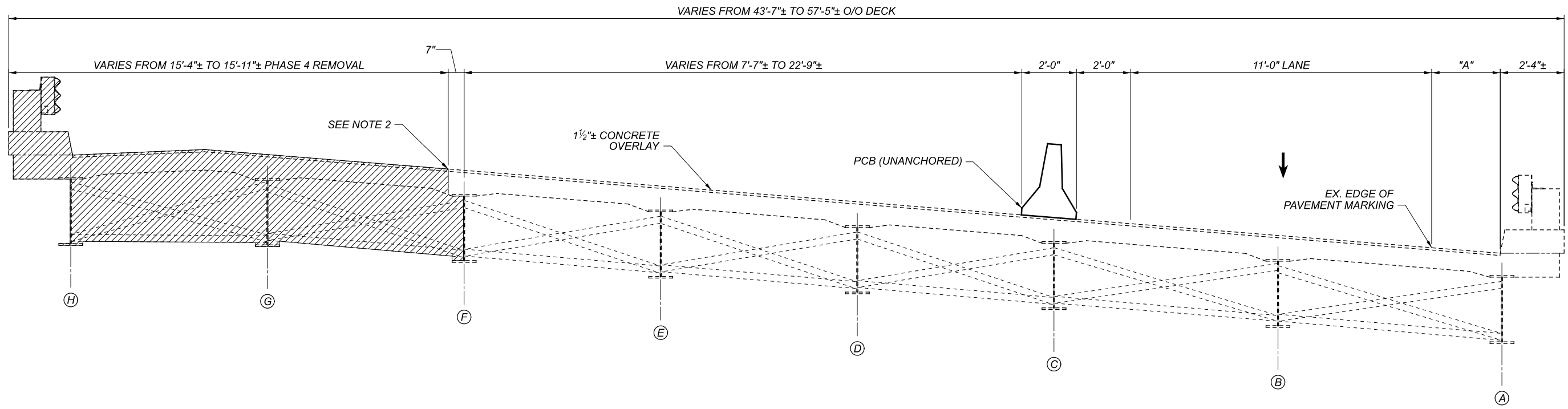
LEGEND:

- = PHASE 4 REMOVAL
- = PHASE 5 REMOVAL
- "A" = VARIES FROM 15'-4"± TO 15'-11"± PHASE 4 REMOVAL
- "B" = VARIES FROM 27'-1"± TO 43'-2"± PHASE 5 REMOVAL

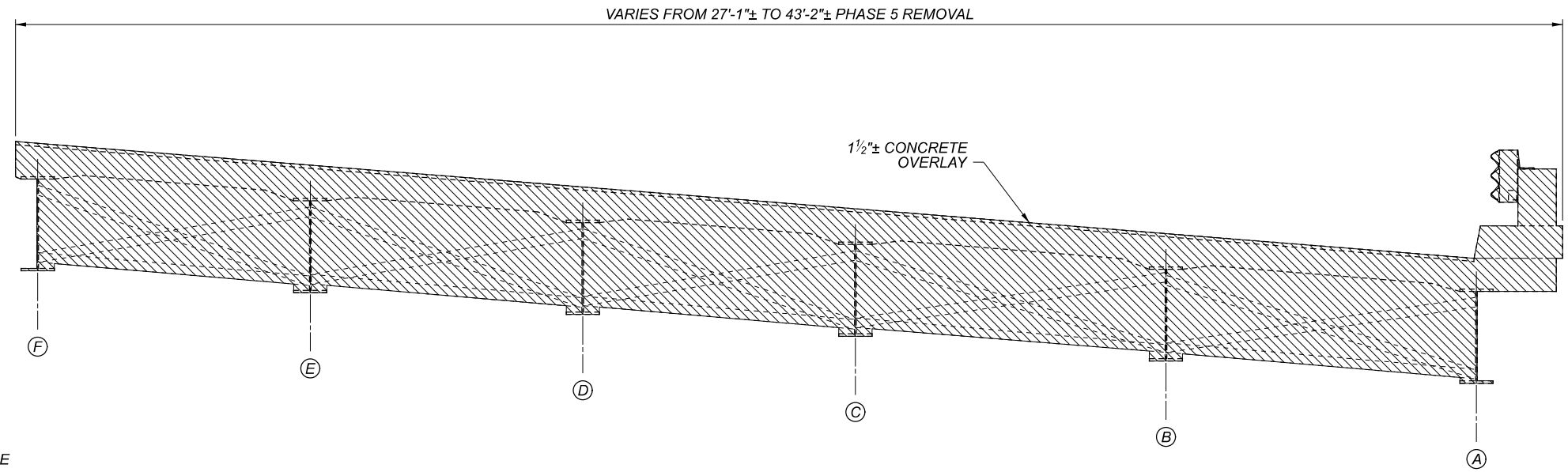
NOTES:

1. SEE SHEET 2/3 FOR PHASED MOT AND REMOVAL DETAILS.
2. SEE SHEET 3/3 FOR ABUTMENT AND PIER REMOVAL DETAILS.
3. FULL DEPTH SAWCUT SHALL FOLLOW EX. BEAM F AT AN OFFSET FROM THE © OF 7" TO THE WEST FOR THE FULL LENGTH OF BRIDGE.
4. SEE SHEET 2/3 FOR PCB LOCATION.

REMOVAL PLAN
CUY-77-1593L (BRIDGE E6)
RAMP I.R. 90 WB TO I.R. 77 SB OVER ABANDONED RAMP E8



PHASE 4 REMOVAL AND MOT



PHASE 5 REMOVAL

LEGEND:

- = PHASE 4 REMOVAL
- = PHASE 5 REMOVAL
- (A) = EXISTING BEAM LETTER
- "A" = VARIES FROM 1'-7"± TO 2'-6"±

NOTES:

1. SECTIONS SHOWN ON THIS SHEET ARE CUT PERPENDICULAR TO THE SUPERSTRUCTURE AND ARE LOOKING NORTH.
2. FULL DEPTH SAWCUT SHALL FOLLOW EX. BEAM F AT AN OFFSET FROM THE ϕ OF 7" TO THE WEST FOR THE FULL LENGTH OF BRIDGE.

SFN
1806939

DESIGN AGENCY

BURGESS & NIPLE
 100 WEST ERIE STREET
 PARANVILLE, OHIO 44077

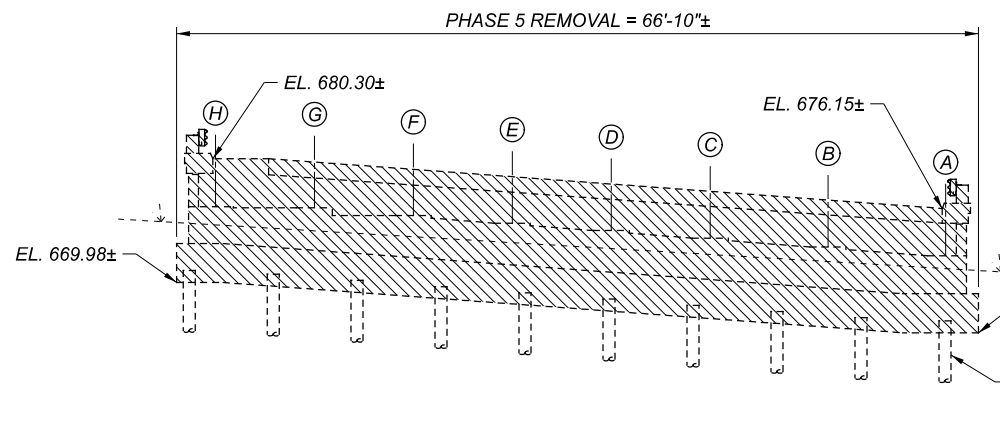
DESIGNER CHECKER
 KMA JAA

REVIEWER
 DWL 06/17/22

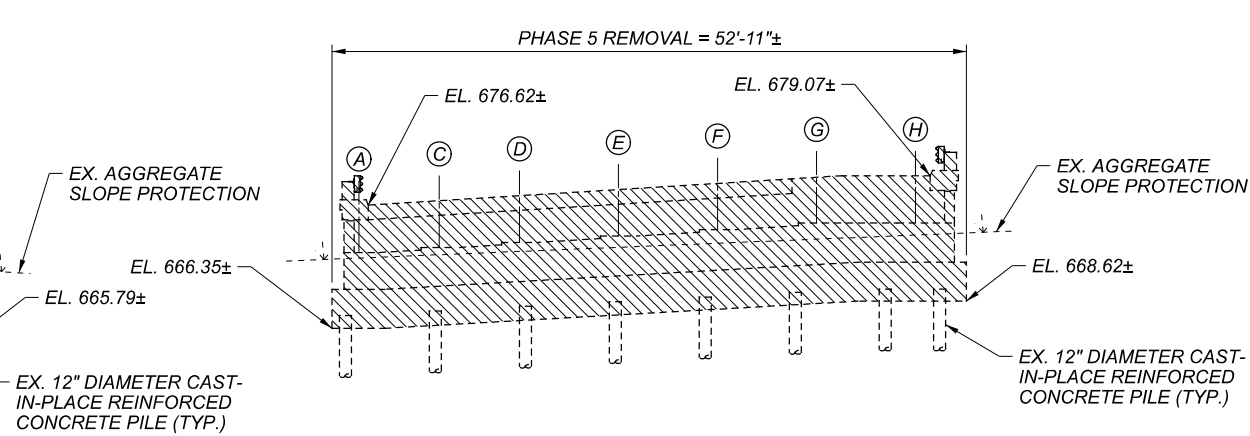
PROJECT ID
 82382

SUBSET	TOTAL
2	3

SHEET	TOTAL
1964	2339



NORTH ABUTMENT REMOVAL ELEVATION (LOOKING NORTH)



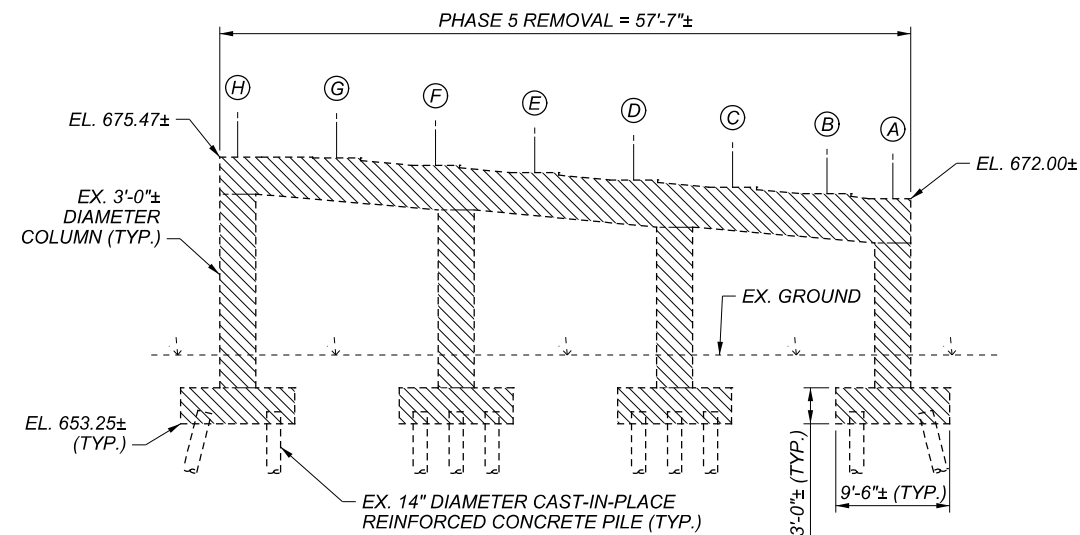
SOUTH ABUTMENT REMOVAL ELEVATION (LOOKING SOUTH)

LEGEND:

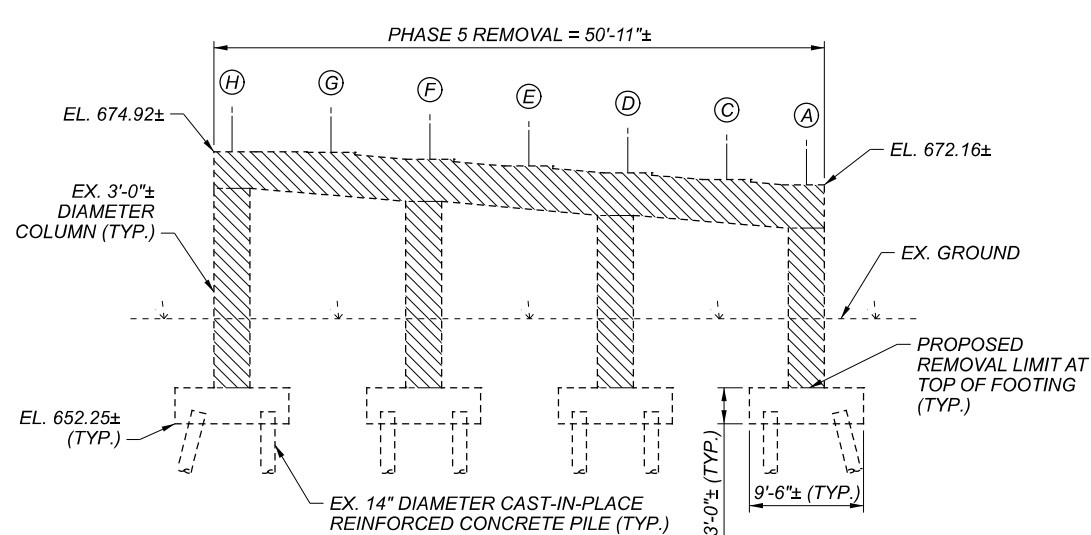
- = PHASE 5 REMOVAL
- = EXISTING BEAM LETTER

NOTES:

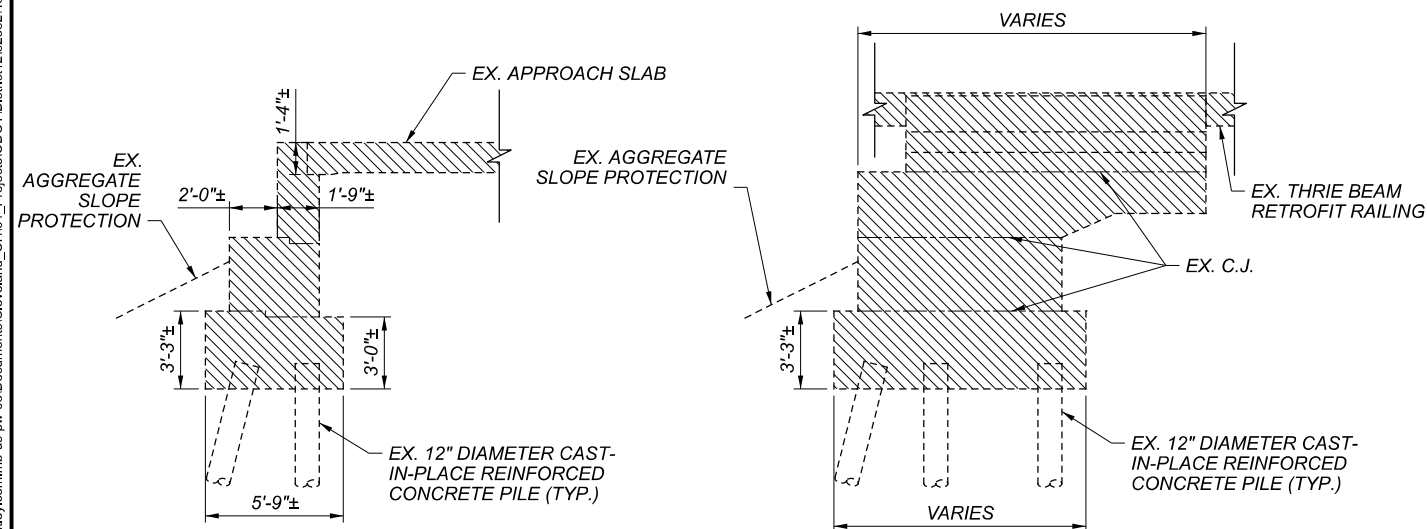
1. CONTRACTOR MAY ADJUST REMOVAL LIMITS TO ACCOMMODATE LIGHTWEIGHT FILL LIMITS AND INSTALLATION.



PIER 1 REMOVAL ELEVATION (LOOKING NORTH)

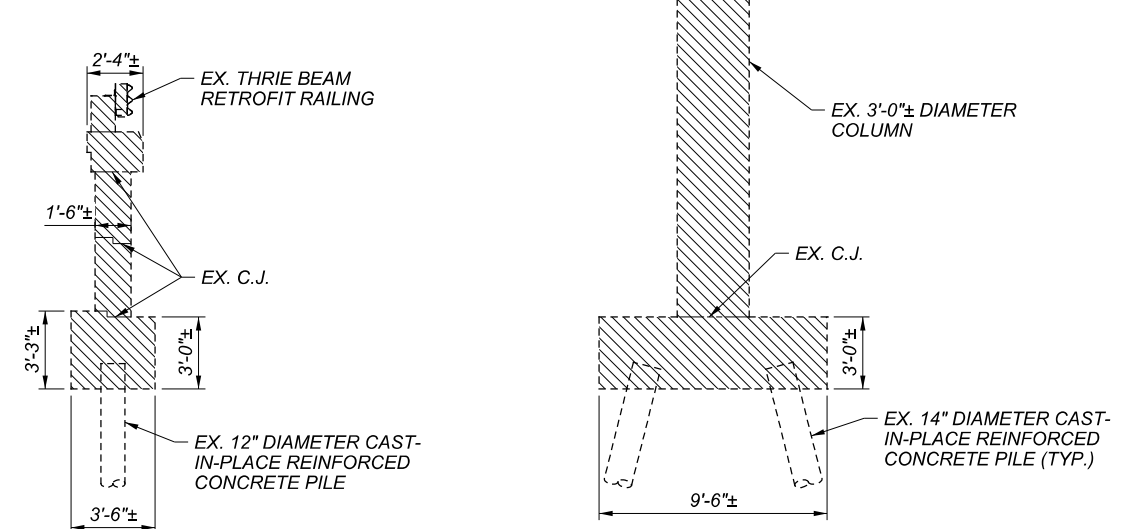


PIER 2 REMOVAL ELEVATION (LOOKING NORTH)



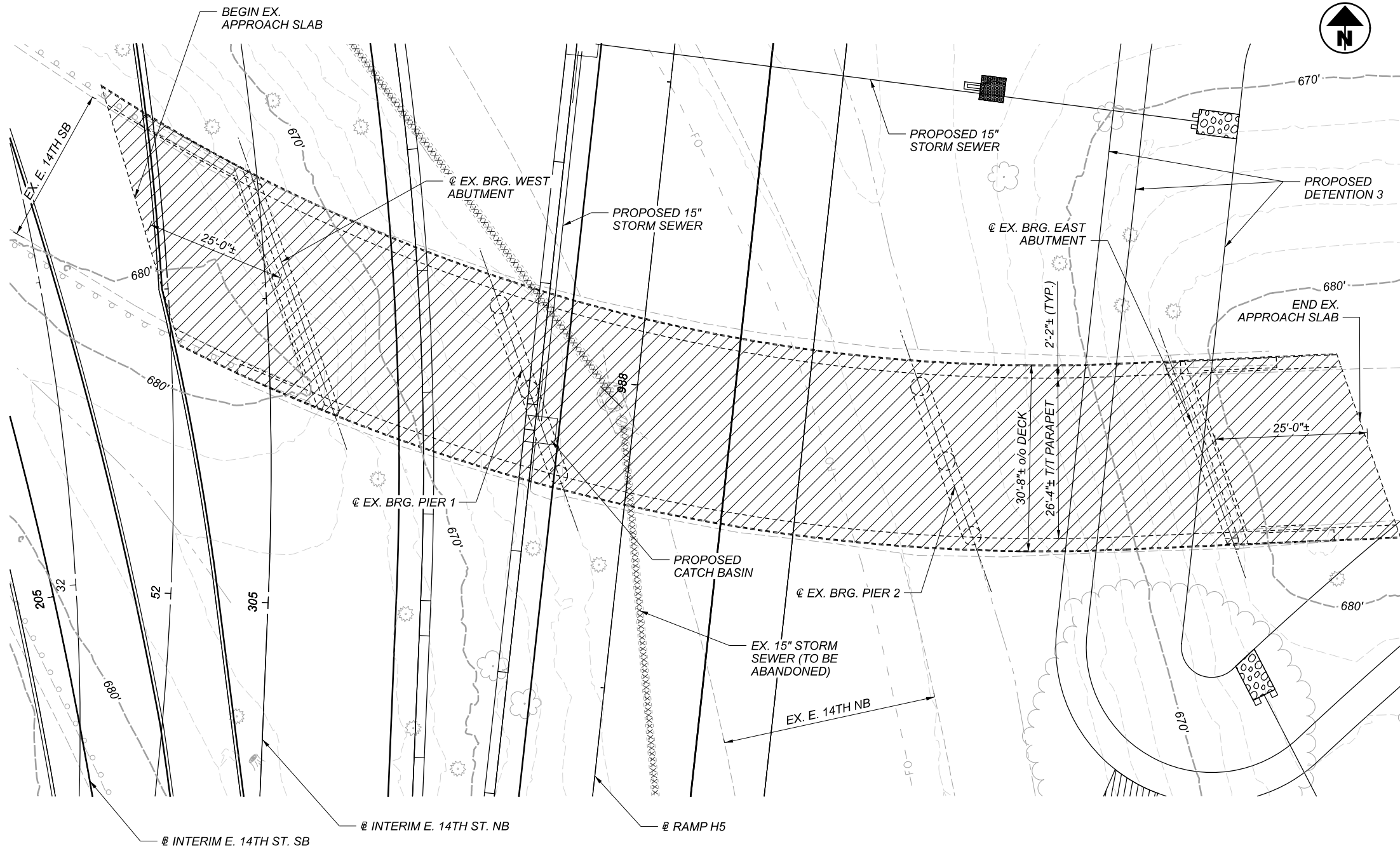
TYPICAL ABUTMENT SECTION

TYPICAL WINGWALL ELEVATION



TYPICAL WINGWALL SECTION

TYPICAL PIER SECTION



STRUCTURE GENERAL NOTES:

MAINTENANCE OF TRAFFIC:
 SEE THE ROADWAY PLANS FOR MAINTENANCE OF TRAFFIC REQUIREMENTS.

EXISTING STRUCTURE VERIFICATION:
 DETAILS AND DIMENSIONS SHOWN ON THESE PLANS PERTAINING TO THE EXISTING STRUCTURE HAVE BEEN OBTAINED FROM PLANS OF THE EXISTING STRUCTURE AND/OR FIELD MEASUREMENTS. THEY ARE INDICATIVE OF THE EXISTING STRUCTURE AND PROPOSED WORK, BUT THEY SHALL BE CONSIDERED TENTATIVE AND APPROXIMATE. THE CONTRACTOR IS REFERRED TO CMS SECTION 102.05, 105.02 AND 513.04. BASE CONTRACT BID PRICES UPON A RECOGNITION OF THE UNCERTAINTIES DESCRIBED ABOVE AND UPON A PREBID EXAMINATION OF THE EXISTING STRUCTURES. HOWEVER, THE DEPARTMENT WILL PAY FOR ALL PROJECT WORK BASED UPON ACTUAL DETAILS AND DIMENSIONS THAT HAVE BEEN VERIFIED IN THE FIELD.

EXISTING STRUCTURE PLANS:
 CONSTRUCTION PLANS FOR EXISTING STRUCTURES ARE ON FILE AT THE DEPARTMENT OF TRANSPORTATION DISTRICT 12 OFFICE, 5500 E. 98TH ST., GARFIELD HEIGHTS, OHIO AND ARE AVAILABLE FOR REFERENCE.

SEQUENCE OF CONSTRUCTION:
 SEE MOT NOTES IN ROADWAY PLANS.

PORTIONS OF STRUCTURE REMOVED, OVER 20 FOOT SPAN, AS PER PLAN:
 THIS ITEM SHALL INCLUDE THE ELEMENTS INDICATED IN THE PLANS AND GENERAL NOTES AND THAT ARE NOT SEPARATELY LISTED FOR PAYMENT. LIMITS OF REMOVAL SHALL BE AS SHOWN ON THE PLANS FOR BRIDGE E10 OR AS DIRECTED BY THE ENGINEER. ITEMS TO BE REMOVED INCLUDE THE SUBSTRUCTURE FOUNDATION PILES THAT INTERFERE WITH NEW CONSTRUCTION, TIMBER SUBDECK, AND MISCELLANEOUS ITEMS THAT ARE NOT SHOWN TO BE INCORPORATED INTO THE FINAL CONSTRUCTION AND ARE DIRECTED TO BE REMOVED BY THE ENGINEER. SUBMIT WORKING DRAWINGS AND CALCULATIONS IN ACCORDANCE WITH CMS 501.55.

ALL CONCRETE, REINFORCING STEEL, TIMBER SUBDECK, ASPHALT, ETC. REMOVED FROM THE STRUCTURE AND NOT REUSED SHALL, UNLESS OTHERWISE SPECIFIED, BECOME THE PROPERTY OF THE CONTRACTOR AND SHALL BE REMOVED BY HIM/HER FROM THE SITE. THE MATERIALS SHALL NOT BE PERMITTED TO REMAIN ON SITE, WITHIN THE RIGHT-OF-WAY OR ELSEWHERE UNLESS SPECIFIED BY THE ENGINEER.

THE USE OF EXPLOSIVES AND HEADACHE BALLS WILL NOT BE PERMITTED. THE METHOD OF REMOVAL AND THE WEIGHT OF HAMMER SHALL BE APPROVED BY THE ENGINEER.

A LUMP SUM QUANTITY HAS BEEN CARRIED TO THE GENERAL SUMMARY FOR ITEM 202 - PORTIONS OF STRUCTURE REMOVED, OVER 20 FOOT SPAN, AS PER PLAN.

REMOVAL PLAN

LEGEND:

= PHASE 1 REMOVAL

NOTES:

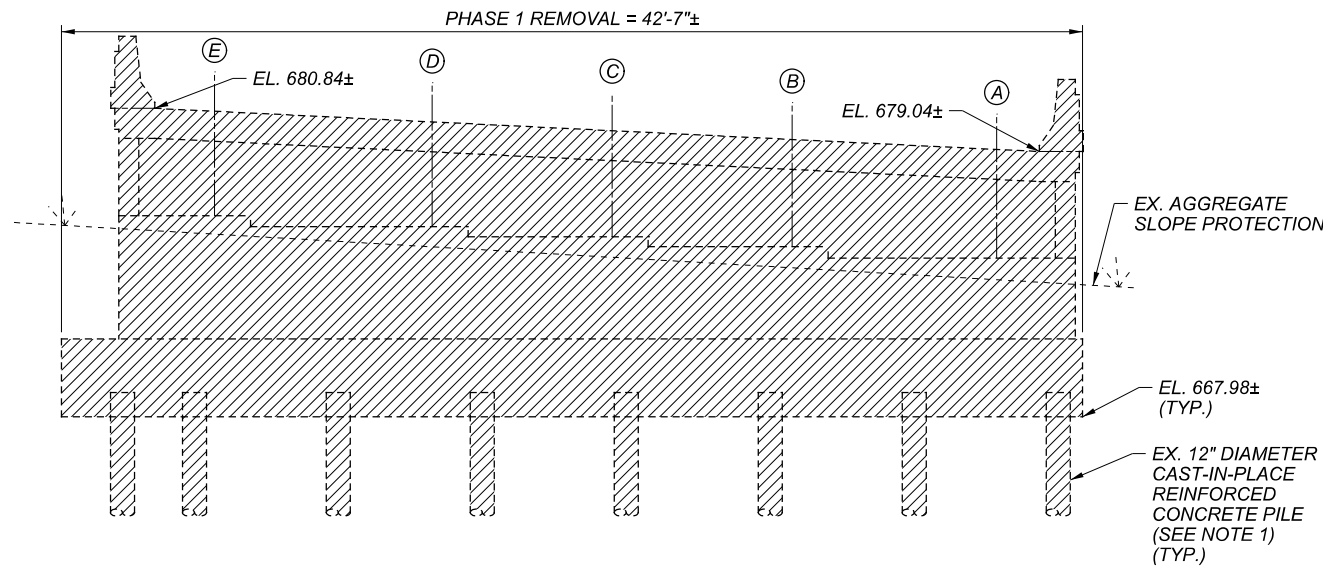
1. SEE SHEET 2/2 FOR ABUTMENT AND PIER REMOVAL DETAILS.

EXISTING STRUCTURE

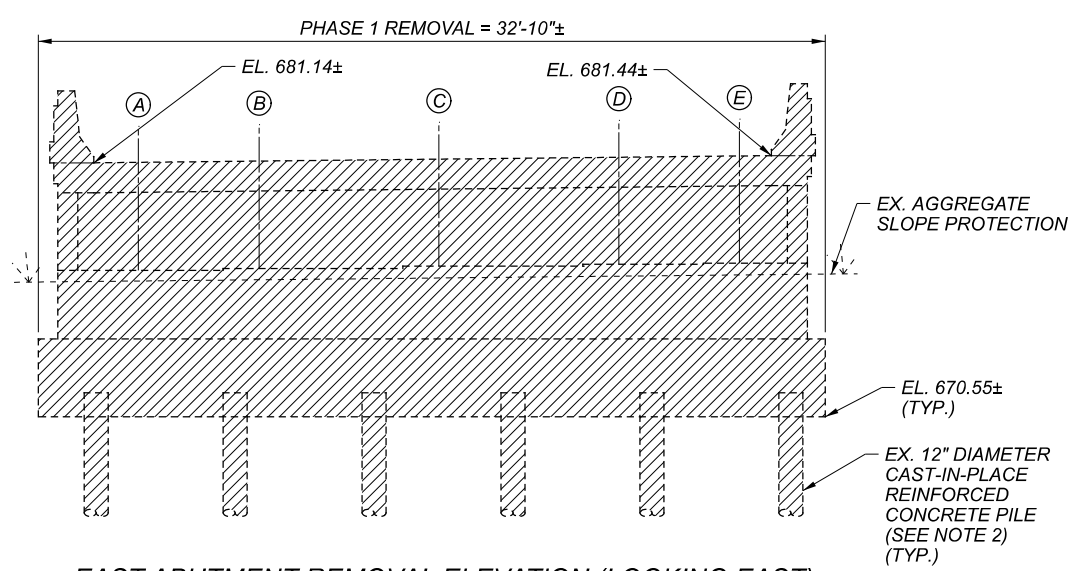
TYPE: CONTINUOUS STEEL BEAM WITH REINFORCED CONCRETE DECK AND SUBSTRUCTURE	
SPANS: 42'-1 ¹⁵ / ₁₆ "±, 70'-7 ¹ / ₁₆ "±, 42'-6 ¹ / ₂ "± c/c BEARINGS MEASURED ALONG EX. #	
ROADWAY: 26'-4"± T/T PARAPETS	
LOADING: CF - 2000 ADEQUATE FOR A.A.S.H.O. ALTERNATE LOADING	
SKEW: VARIES	
WEARING SURFACE: 1 1/2"± CONCRETE OVERLAY	
APPROACH SLABS: AS-1-54 (25 FEET LONG)	
ALIGNMENT: 20°00'00" CURVE LEFT	
CROWN: VARIES (SUPERELEVATED)	
STRUCTURE FILE NUMBER: 1806912	
DATE BUILT: 1960, REHABILITATIONS	
DISPOSITION: TO BE REMOVED	

REMOVAL PLAN
CUY-E14TH-0002SN (BRIDGE E10)
EAST 14TH ST. SB OVER EAST 14TH ST. NB

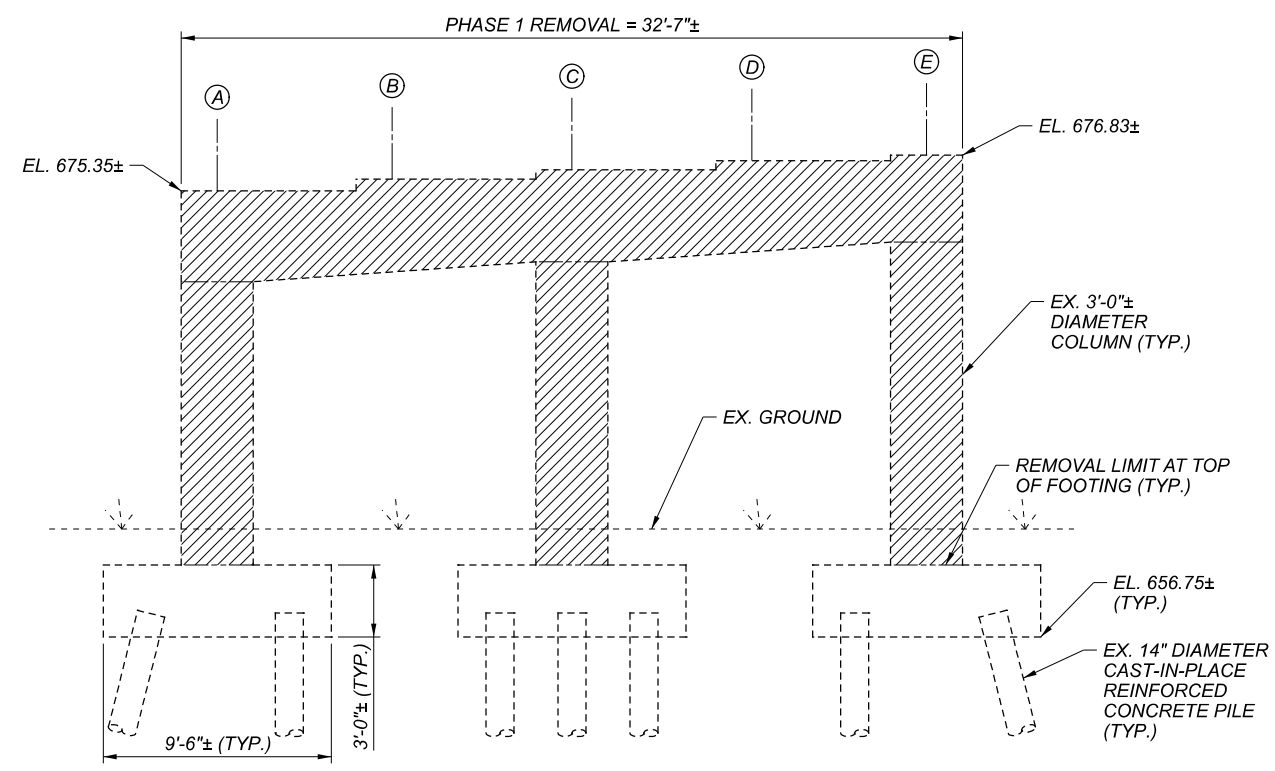
SFN	1806912
DESIGN AGENCY	BURGESS & NIPLE 100 WEST ERIE STREET, PARMA, OHIO 44137
DESIGNER	KMA
CHECKER	JAA
REVIEWER	DWL
PROJECT ID	82382
SUBSET	TOTAL
1	2
SHEET	TOTAL
1966	2339



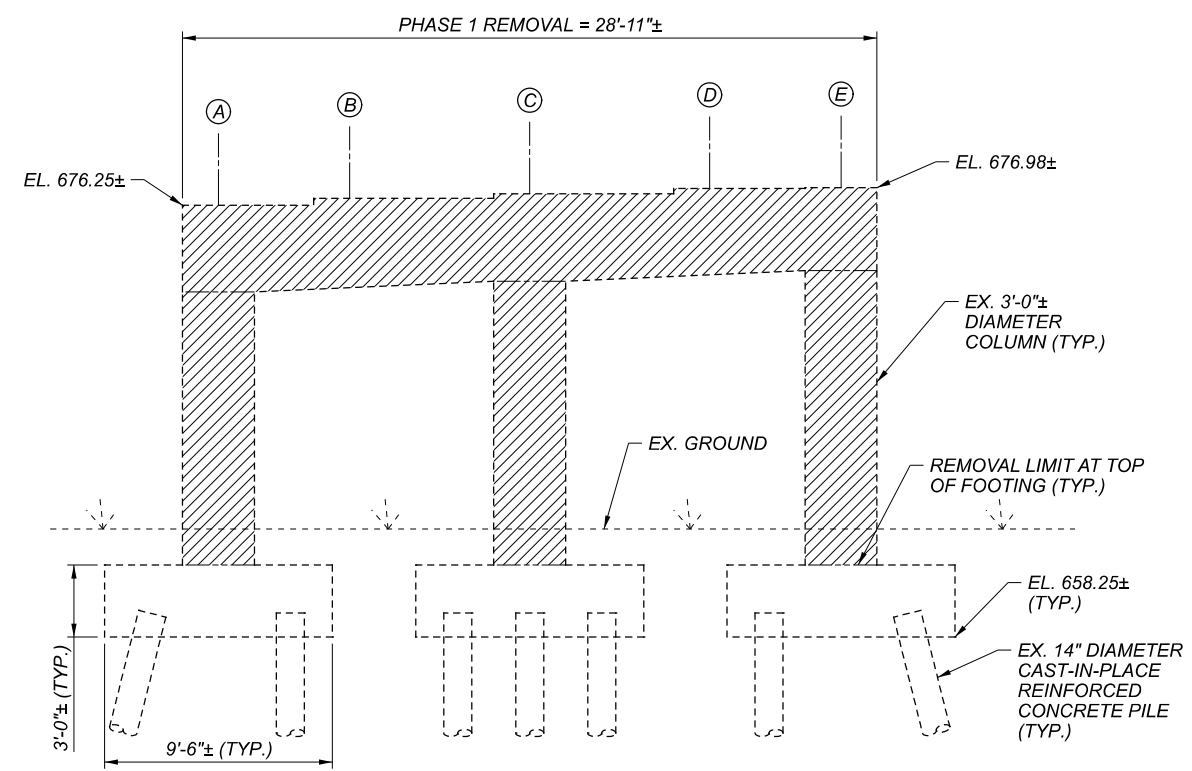
WEST ABUTMENT REMOVAL ELEVATION (LOOKING WEST)



EAST ABUTMENT REMOVAL ELEVATION (LOOKING EAST)



PIER 1 REMOVAL ELEVATION (LOOKING EAST)



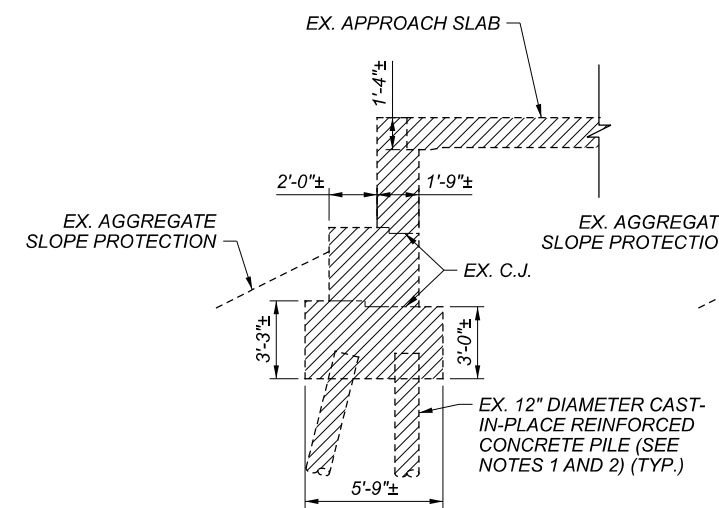
PIER 2 REMOVAL ELEVATION (LOOKING EAST)

LEGEND:

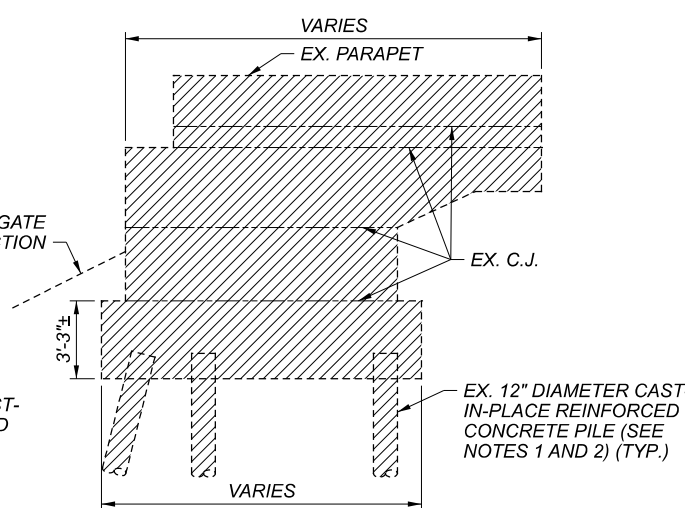
- = PHASE 1 REMOVAL
- = EXISTING BEAM LETTER

NOTES:

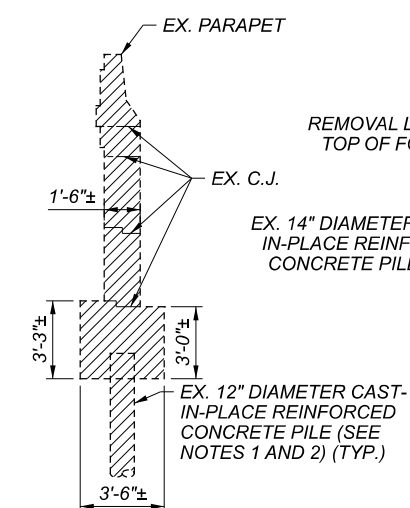
1. REMOVE ALL WEST ABUTMENT AND WINGWALL 14" CAST-IN-PLACE REINFORCED CONCRETE PILES TO EL. 661.00.
2. REMOVE ALL EAST ABUTMENT AND WINGWALL 14" CAST-IN-PLACE REINFORCED CONCRETE PILES TO EL. 656.50.



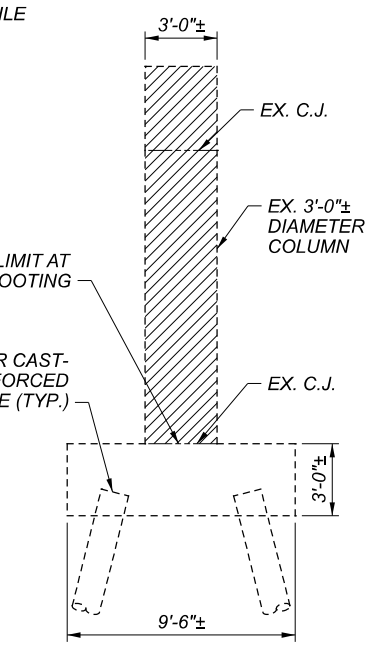
TYPICAL ABUTMENT SECTION



TYPICAL WINGWALL ELEVATION



TYPICAL WINGWALL SECTION



TYPICAL PIER SECTION

SFN	1806912
DESIGN AGENCY	
BURGESS & NIPLE 100 WEST ERIE STREET PARANVILLE, OHIO 44077	
DESIGNER	CHECKER
KMA	JAA
DWL	06/17/22
PROJECT ID	82382
SUBSET	TOTAL
2	2
SHEET	TOTAL
1967	2339