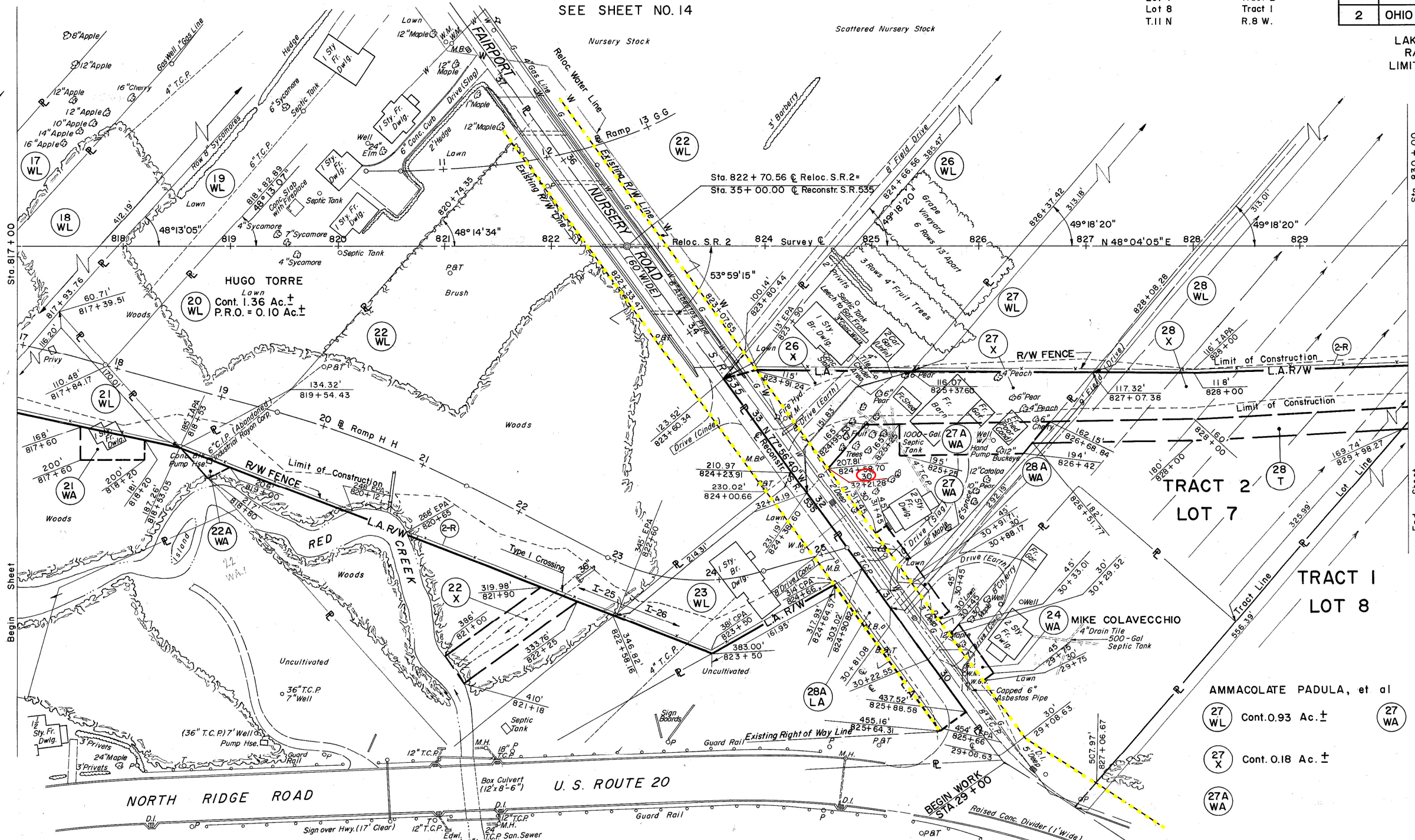


SEE SHEET NO. 14



E-10 REMOVAL OF BUILDINGS		
Parcel	Code	Description
21 WL	1	1 Sty. Frame Dwelling
22 WL	1	Privy
23 WL	1	Conc. Blk. Pump House
26 WL	1	1 Sty. Brick Dwelling
26 WL	1	1 Sty. Brick Dwelling
26 WL	1	2 Car Garage
27 X	2	Frame Sheds
27 X	1	Frame Barn
27 X	1	Frame Garage

(R) ROADWAY

REF. NO.	STATION		SIDE	I-10 DUMPED ROCK CH. PROT.	I-25 FENCE TYPE 39	I-26 FENCE CHAIN LINK
	FROM	TO				
2-R	817+00	830+00	Rt.	5	535	1015

ALBERT E. & EMMA J. ORIS  
 (17 WL) Cont. 0.52 Ac. ±

ROBERT C. CAIRNS  
 (21 WL) Cont. 0.23 Ac. ±

CHARLES & CATHERINE PADULA  
 (23 WL) Cont. 0.35 Ac. ±  
 P.R.O. = 0.08 Ac. ±

JOSEPH F. & RUTH N. TANKOVICH  
 (18 WL) Cont. 0.73 Ac. ±

INDUSTRIAL RAYON CORPORATION  
 (22 WL) Cont. 6.13 Ac. ±  
 P.R.O. = 0.64 Ac. ±

ALFRED N. & DOLORES PADULA  
 (26 WL) Cont. 1.00 Ac. ±  
 P.R.O. = 0.006 Ac. ±

ROYAL E. & MARY JANE FRIES  
 (19 WL) Cont. 0.67 Ac. ±  
 P.R.O. = 0.05 Ac. ±

(22 X) Cont. 0.09 Ac. ±

(26 X) Cont. 0.16 Ac. ±

LOUIS COLAVECCHIO  
 (28 WL) Cont. 1.80 Ac. ± (28 T) Cont. 0.16 Ac. ±  
 (28 X) Cont. 0.33 Ac. ± (28A LA) P.R.O. = 0.12 Ac. ±  
 (28A WA)

Rev. 4-27-64 Parcels 19WD & 20WD Changed to 19WL & 20WL  
 Rev. 12-12-63 Extended Frontage Road "A"

R/W PLAN, STA. 817+00 TO STA. 830+00