

CURVE DATA

LEFT		±	RIGHT		
EDGE	WIDTH	STATION	GRADE	WIDTH	EDGE
1022.68	15.00	37+55.90	10.23.03	15.00	1022.68
22.36		+80.90	22.36		22.11
22.05		38+00	21.82		21.61
21.92		+05.90	21.67		21.46
21.61		+30.90	21.07		20.86
21.31		+55.90	20.52		20.31
21.03		+80.90	20.04		19.83
20.93		39+00	19.70		19.49
20.89		+05.90	19.60		19.33
20.60		+25	19.31		19.10
20.26		+50	18.97		18.76
19.98		+75	18.69		18.48
19.78		40+00	18.47		18.26
19.59		+25	18.30		18.09
19.48		+50	18.19		17.93
19.42		+75	18.13		17.92
19.41		41+00	18.12		17.91
19.46		+25	18.17		17.96
19.56		+50	18.27		18.06
19.73		+75	18.44		18.23
19.94		42+00	18.65		18.44
20.22		+25	18.93		18.72
20.54		+50	19.25		19.04
20.73		+62.57	19.44		19.23
20.88		+87.57	19.84		19.63
20.99		43+00	20.07		19.86
21.10		+12.57	20.31		20.10
21.37		+37.57	20.83		20.62
21.69		+62.57	21.40		21.19
22.01		+87.57	21.97		21.76
22.18		44+00	22.26		22.05
1022.34	15.00	+12.57	1022.55	15.00	1022.34

NO EXTRA PAVEMENT

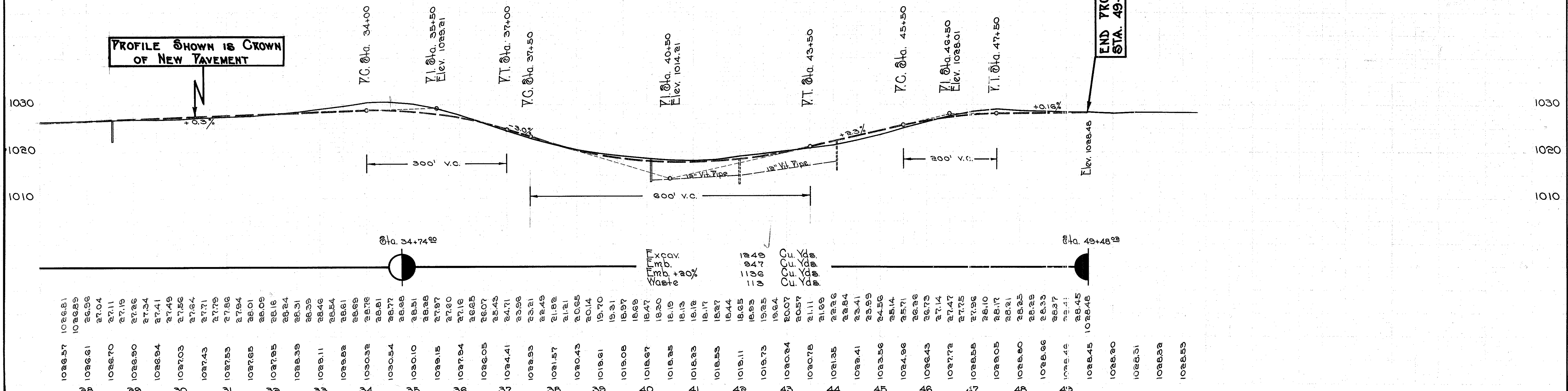
NEW CURVE
 R = 18'-16" Kt.
 Δ = 4°-00'
 L = 1432.39'
 P.T. Sta. 43+12.97
 E = 230.29'
 Δ = 456.27'
 E = 18.39'

OLD CURVE
 R = 18'-16" Kt.
 Δ = 19°-00'
 L = 301.56'
 P.T. Sta. 43+12.97
 E = 48.70'
 Δ = 96.14'
 E = 2.81'

CURVE DATA
 R = 3°-01' Lt.
 Δ = 1°-30'
 L = 2819.83'
 P.T. Sta. 49+48.92
 E = 201.11'
 Δ = 132'

old CFN 280430040
 new CFN 1826683
 SLM 0.40, 12" VCP
 SEE SHEET 8

old CFN 280430018
 new CFN 1880924
 SLM 0.18, 24" VCP
 SEE SHEET 8



PLAN & PROFILE STA. 28+00 TO 49+48.92