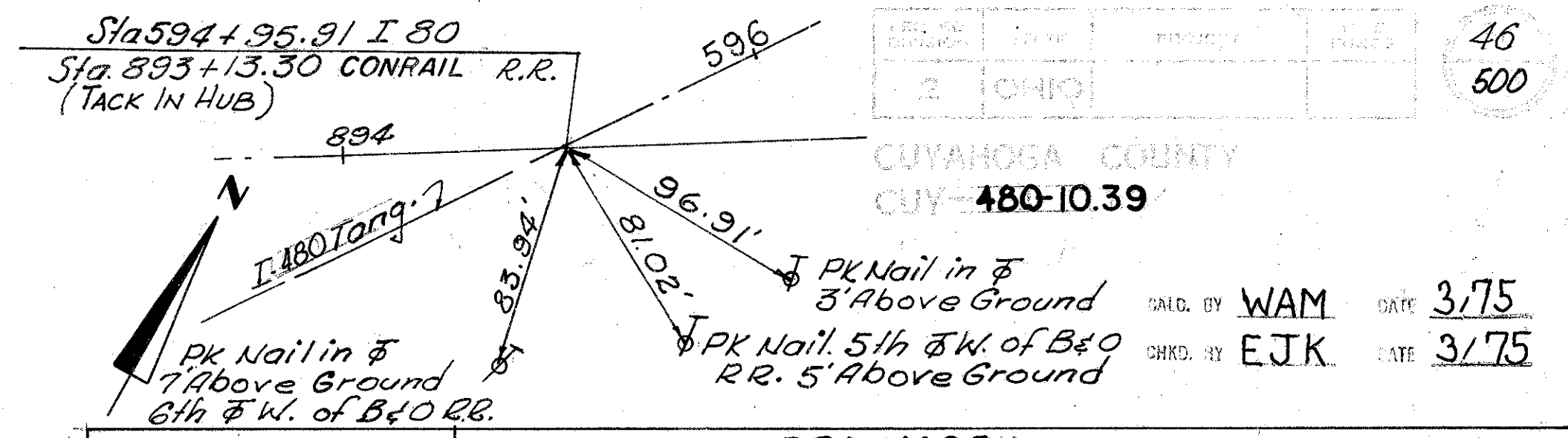


CUYAHOGA COUNTY
CUY-480-10.39

CHKD. BY WAM DATE 3/75
CHKD. BY EJK DATE 3/75



		DRAINAGE											
ESTIMATED QUANTITIES		602	603		604	601	605	660		668			
		Concrete	Masonry	Type "F" 70705	Type "C" 70602	Type "C" 70602	Type "C" 70602	Type "C" 70602	Type "C" 70602	Type "C" 70602	Type "C" 70602	Exc.	Exc.
35P	Rt			205									
36P	Rt				210								
37P	Rt					245	45						
38P	Rt					30	118						
39P	Rt			85	32								
10	Rt											52	906
2D	Lt		0.27	94									
1U	Lt										180	52	1
2U	Med										331	65	1
3U	Lt			10							442	64	2
4U	Med										313		
5U	Rt		28								116	60	3
TOTALS TO GEN. SUM		0.96	38.94	205	210	85.32	275	163	1	1	1	3	1382 241

Sheet No.	CROSS REFERENCE ITEM
58	W-2 Plan & Profile
59	W-3 Plan & Profile
84	W-2 Pav't. Detail
84	W-3 Pav't. Detail
332	Structure
41	SUPERELEVATION TABLES

TREE REMOVAL
590+00 TO 600+00

SIZE	N ^o
18"	0

		ROADWAY		
Estimated Quantities		606	202	
		GUARD RAIL Type # 6	BRIDGE TERMINAL ASSEMBLY TYPE A	PIPE REMOVED 24" F. UNDER
REF. No.	Side	Location	L.F.	L.F.
1G	RT	593+04.76-594+83	184	1
2G	LT	595+23.76-600+00	477	1
3G	RT	597+91.76-599+63	172	2
IR	Rt	599+44±		41
TOTAL			833	4 41

PROPOSED STRUCTURE - N^o CUY-80-1078
 TYPE: Continuous steel girder with reinforced concrete deck and substructure.
 SPANS: 91'-0" - 121'-0" - 91'-0" Brqs. on I-480
 ROADWAY: Width varies. Parapets. Average width = 169'-0". BR-1 Railing and cong. barrier median.
 LOADING: HS 20-44 Case I and the Alternate Military Loading
 WEARING SURFACE: 1 1/4" Latex Modified Concrete
 SKEW: 59°-41'-15" Right Fwd. with respect to Ref. Line
 ALIGNMENT: 1°-15'-00" Curve and Tangent
 APPROACH SLABS: 45'-1'-81" (25' long)
 SUPERELEVATION: Varies (0.05 ft. per ft. max.)

* FOR QUANTITIES ON 40P SEE SHEET No. 47.

Excavation	1,100 C.Y.
Embankment	236,646 C.Y.
Seeding	21,699 S.Y.

