

SLM 5.99, 12"
SEE SHEET 183

FOR DETAILS ON BIG CREEK
PARKWAY SEE SHEETS 45 & 46

FOR PAVEMENT DETAILS
SEE SHEET 165

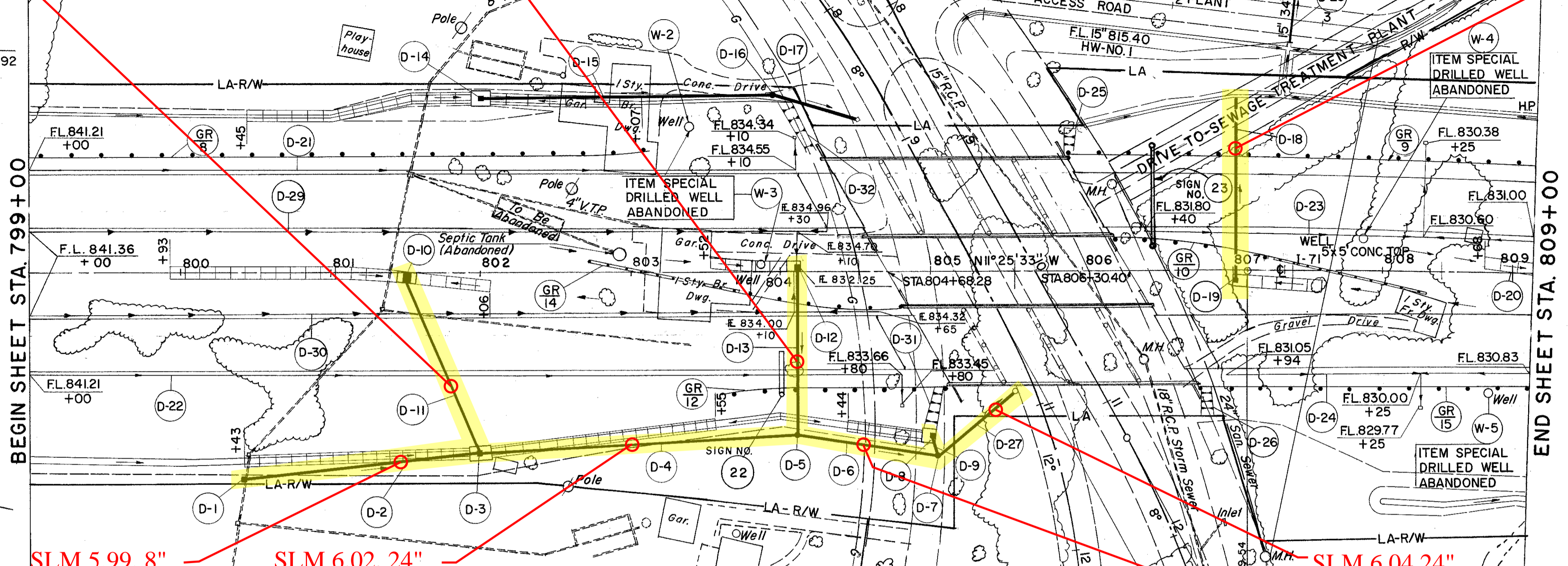
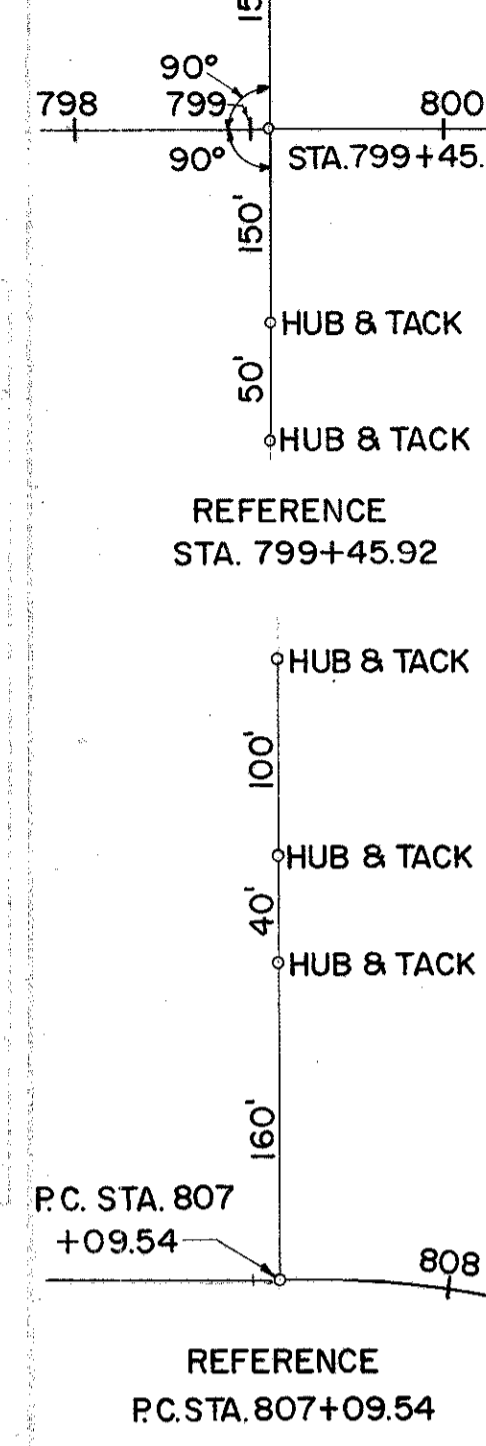
SLM 6.02, 12"
SEE SHEET 183

FOR DETAILS ON
STRUCTURE NO. CUY-1-71-603
SEE SHEETS 271 & 282

SLM 6.08, 12"
SEE SHEET 183

FED. RD. DIVISION 2	STATE OHIO	PROJECT	FISCAL YEAR 25 353
------------------------	---------------	---------	--------------------------

CUYAHOGA COUNTY
CUY-71-5.72



SLM 5.99, 8"
SEE SHEET 183

SLM 6.02, 24"
SEE SHEET 183

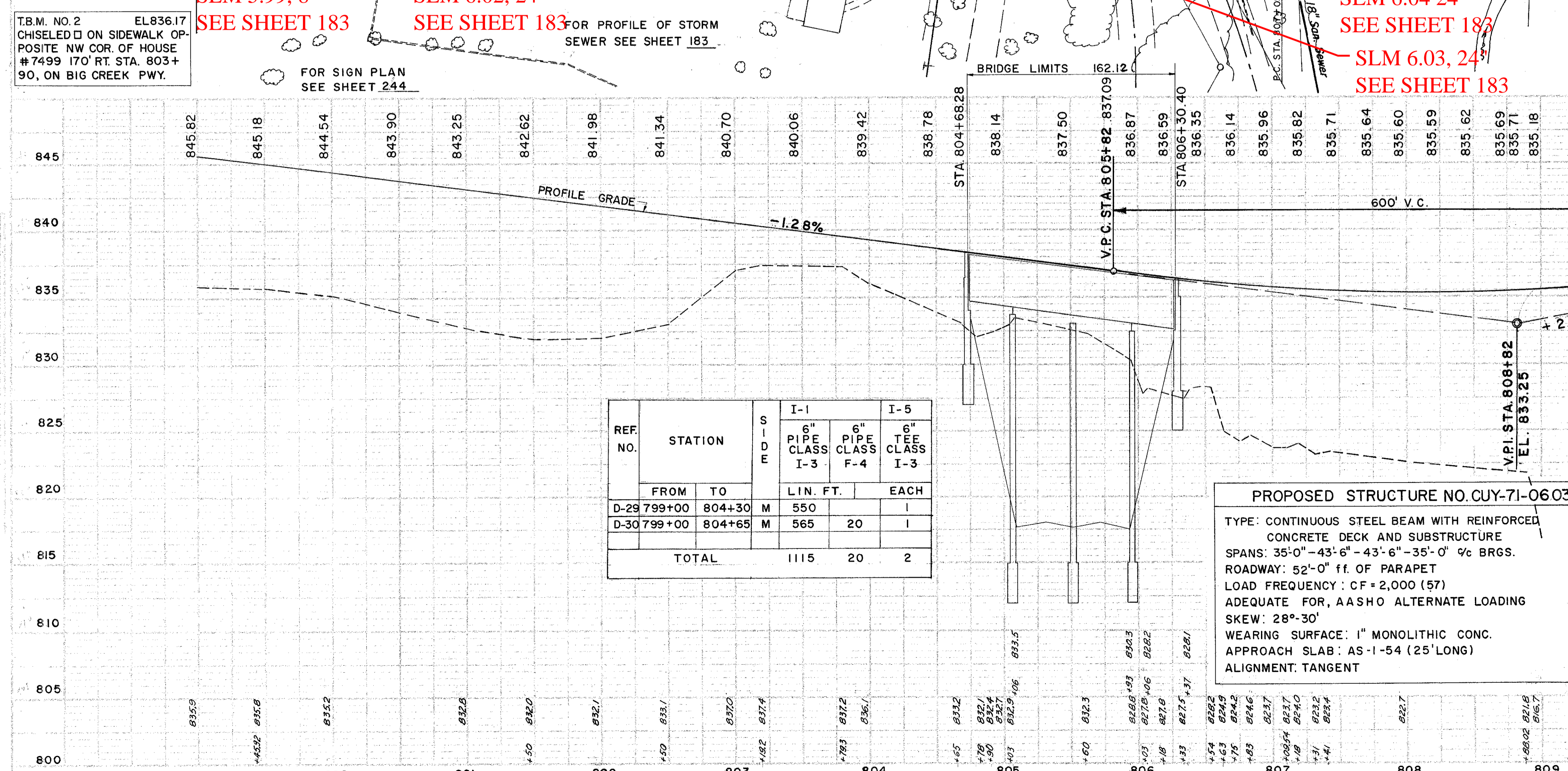
SLM 6.04 24"
SEE SHEET 183

SLM 6.03, 24"
SEE SHEET 183

D DRAINAGE

REF. NO.	STATION	SIDE	I-1					I-2	I-5					
			8" PIPE CLASS I	12" PIPE CLASS I	12" PIPE CLASS J	12" PIPE CLASS F4	15" PIPE CLASS E-1			24" PIPE CLASS F-4	MASONRY	12" x 25" BEND CLASS F-4		
			LIN. FT.					C.Y.	EACH					
D-2	800+43	802+00	RT.	158										
D-4	802+00	804+10	RT.					210						
D-6	804+10	805+05	RT.					95						
D-9	805+00	805+05	RT.		14									
D-11	801+50	802+00	RT.				124							
D-13	804+10	804+10	RT.				112							
D-15	802+00	803+95	LT.					195						
D-17	803+95	E.8+74	LT.					58						
D-18	807+00	807+00	LT&RT			93	31			0.23	2			
D-27	805+05	805+57	RT.						66					
D-28	2+80	S.D.P. ACCESS ROAD							34	3.40				
TOTAL				158	14	329	31	195	58	34	305	66	3.63	2

REF. NO.	STATION	SIDE	6" PIPE CLASS J-1		6" PIPE CLASS I-3		6" PIPE CLASS F-4		I-5		
			CLASS J-1	CLASS I-3	CLASS F-4	6" x 90° BEND CLASS I-3	6" x 6" TEE CLASS I-3				
			LIN. FT.		LIN. FT.		EACH		EACH		
D-21	799+00	804+10	LT.		520	10	1				
D-22	799+00	804+80	RT.		590	20	1				
D-23	806+36	809+00	LT.	42	276	10			1		
D-24	806+94	809+00	RT.		219	10			1		
TOTAL				42	1605	50	2	2			



REF. NO.	STATION	SIDE	I-1		I-5	
			6" PIPE CLASS I-3	6" PIPE CLASS F-4	6" TEE CLASS I-3	6" TEE CLASS I-3
			LIN. FT.		EACH	
D-29	799+00	804+30	M	550		1
D-30	799+00	804+65	M	565	20	1
TOTAL				1115	20	2

PROPOSED STRUCTURE NO. CUY-71-0603
TYPE: CONTINUOUS STEEL BEAM WITH REINFORCED CONCRETE DECK AND SUBSTRUCTURE
SPANS: 35'-0" - 43'-6" - 43'-6" - 35'-0" 1/2 BRGS.
ROADWAY: 52'-0" ff. OF PARAPET
LOAD FREQUENCY: CF = 2,000 (57)
ADEQUATE FOR, AASHTO ALTERNATE LOADING
SKEW: 28°-30'
WEARING SURFACE: 1" MONOLITHIC CONC.
APPROACH SLAB: AS-1-54 (25' LONG)
ALIGNMENT: TANGENT

REF. NO.	STATION	SIDE	I-8				L-120	L-10	I-8	
			STD. NO. 1 MANHOLE	STD. NO. 4 CATCH BASIN	STD. NO. 5 CATCH BASIN	STD. NO. 8 CATCH BASIN				JUTE MATTING
			EACH				S.Y.	S.Y.	EACH	
D-1	800+43	36' RT.							1	
D-3	800+43	803+55	RT.			1			256	
D-5	804+10	109' RT.			1					
D-7	805+05	22' RT.			1					
D-8	804+44	805+00	RT.			1			43	
D-10	799+98	802+06	C			1			170	
D-12	803+52	804+10	C				1		43	
D-14	800+45	803+07	LT.				1		208	
D-16	803+95	118' LT.			1					
D-19	807+00	807+58	C				1		43	
D-20	808+68	809+00	C						27	
D-25	805+91	LT.								13
D-26	806+80	RT.								23
D-31	805+05	RT.								20
D-32	804+10	LT.								30
TOTAL				3	1	3	2	790	86	1

ROADWAY				DRAINAGE			
ITEM NO.	STATION	SIDE	LIN. FT.	REF. NO.	LOCATION	E.A.	
GR-8	799+00	803+095	LT.	409.5	W-2	803+32, 105' LT.	1
GR-9	805+91.5	809+00	LT.	311	W-3	803+89, 4' LT.	1
GR-10	806+135	808+85	M.	112.5	W-4	807+76, 24' LT.	1
GR-12	803+33	805+08	RT.	175	W-5	808+75, 80' RT.	1
GR-14	802+74	804+865	M.	112.5	TOTAL		4
GR-15	806+73	809+00	RT.	225			
TOTAL				1170.5	175	200	

PLAN & PROFILE STA. 799+00 TO STA. 809+00

* AS PER PLAN