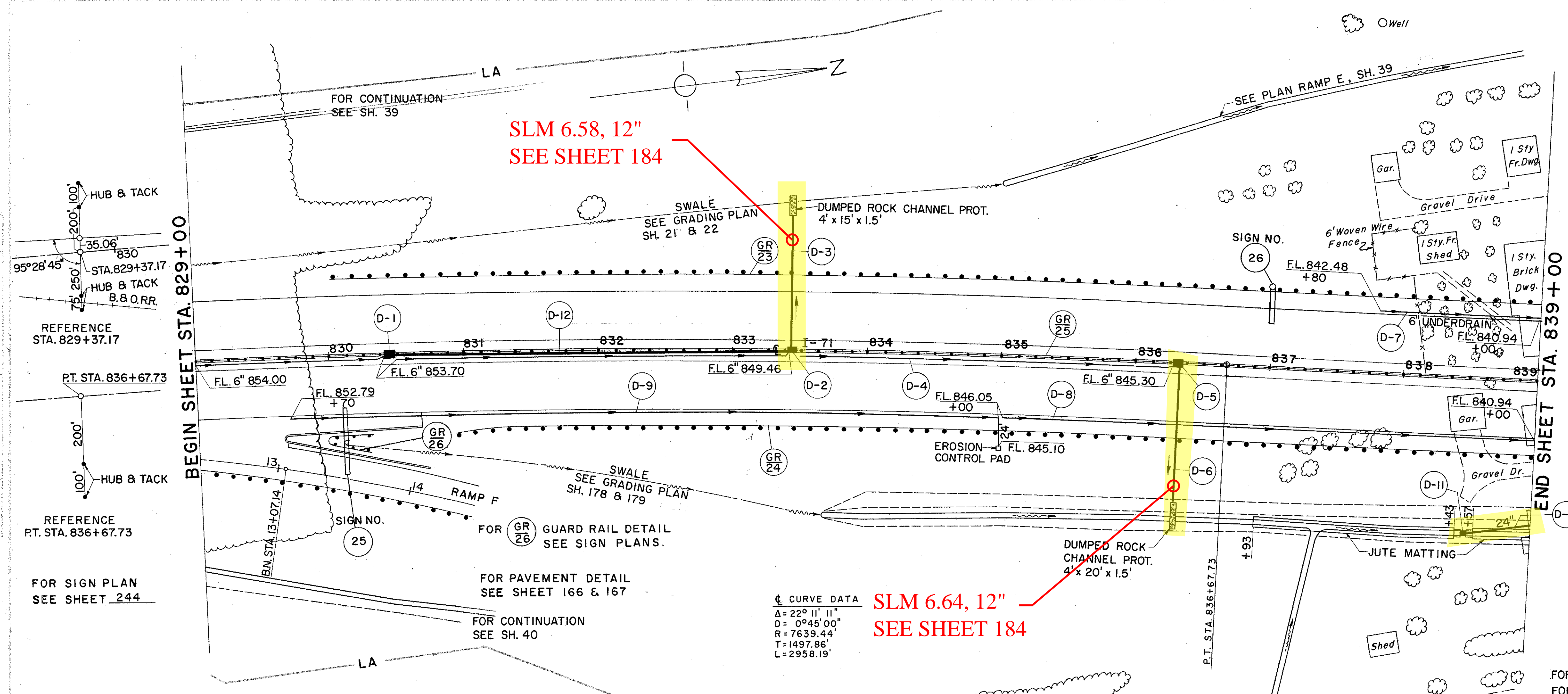


CUYAHOGA COUNTY
CUY - 71-5.72



D DRAINAGE

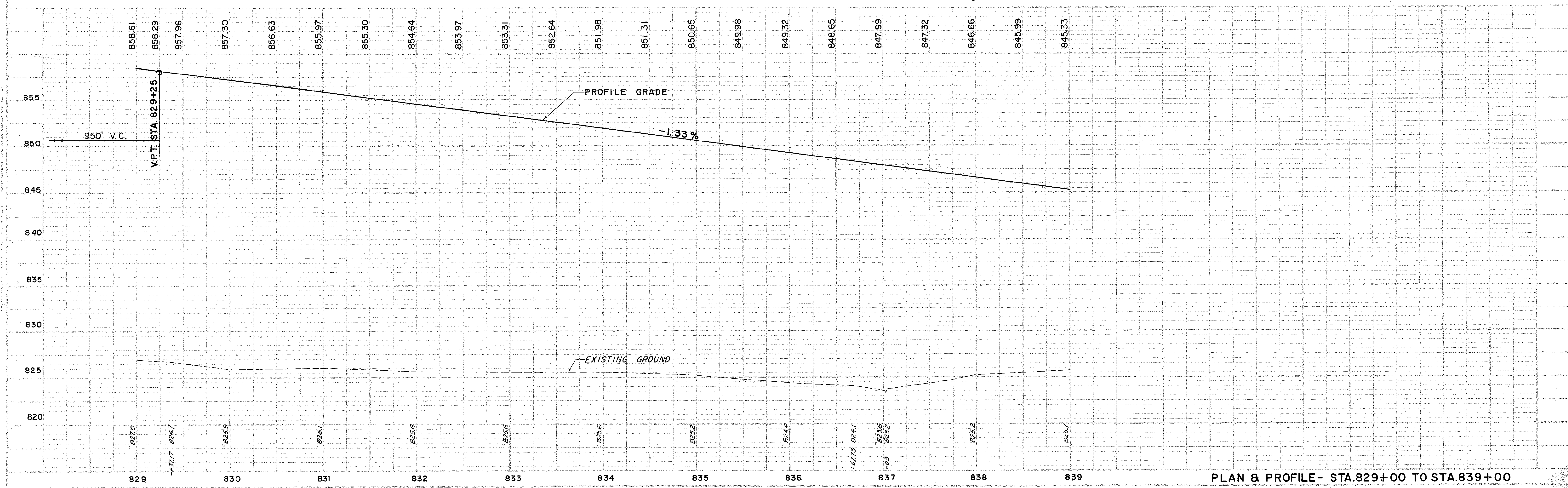
REF. NO.	STATION	FROM	TO	ITEM I-1																			
				6\"/>																			
D-1	830+45																						
D-2	833+45																						
D-3	833+45	DITCH	LT.																				
D-4	829+00	836+45																					
D-5	836+45																						
D-6	836+45	DITCH	RT.																				
D-7	837+80	839+00	RT.																				
D-8	835+00	839+00	RT.																				
D-9	829+70	835+00	RT.																				
D-10	838+50	839+00	RT.																				
D-11	838+50	118'	RT.																				
D-12	830+45	833+45																					
TOTALS				100	1683	20	120	81	50	0.6	300	1	4	1	1	2	7.9	3.0	153				

ROADWAY

REF. NO.	STATION	FROM	TO	ITEM I-15	GUARD RAIL LIN. FT.		
					STEEL BEAM (DEEP)	STANDARD # BARRIER	
GR-23	830+04	839+00	LT.		902		
GR-24	830+98.5	839+00	RT.		797.5		
GR-25	829+00	839+00	M			1000	
GR-26	830+03	830+28	RT.		50		
TOTAL					1699.0	50	1000

* AS PER PLAN

FOR DETAILS OF D-3 AND D-6 SEE SH. 184
FOR DETAILS OF D-10 SEE SH. 193



PLAN & PROFILE - STA. 829+00 TO STA. 839+00