

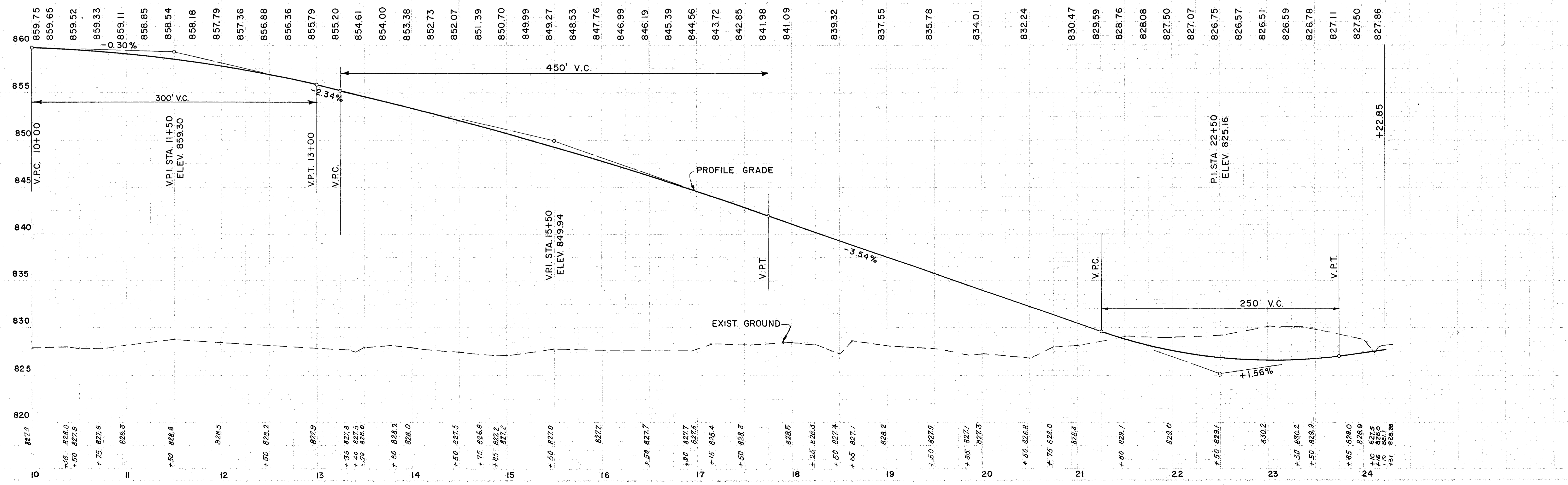
CFN 180710662
SLM 6.62, 24"
SEE SHEET 206

FOR DETAILS ON CULVERT D-3
SEE SHEET 206

FOR PAVEMENT DETAILS
SEE SHEET 167

REF. NO.	STATION	SIDE	DRAINAGE									
			6" PIPE CLASS I-3	6" PIPE CLASS F-4	24" PIPE CLASS A1 SEC. M6.6(a) OR M-6.8(b)	6" 60° BEND CLASS I-3	6" 90° BEND CLASS I-3	6" WYE CLASS I-3	MASONRY	SODDING	CHANNEL EXCAV.	JUTE MATTING
	FROM	TO	L.F.	L.F.	L.F.	EA.	EA.	EA.	C.Y.	S.Y.	C.Y.	S.Y.
D-1	12+44	18+00	RT.	564	10							
D-2	18+00	20+55	LT.	272	10							
D-3	20+65	RT & LT.				68			6.6	7	89	
D-4	20+50	21+25	RT.				2					
D-5	20+70	23+65	LT.	284	20							125
D-6	21+94	23+50	LT.									125
D-7	21+94	23+40	RT.									
				1120	40	68	2	1	6.6	83	89	250

REF. NO.	ITEM	STATION	ROADWAY			
			GUARD RAIL	STEEL BEAM (DEEP)	LIN. FT.	
		FROM	TO	SIDE	STANDARD	BARRIER
GR-21	I-15	10+01	20+04	RT.	1000	
GR-22	I-15	15+25	19+00	LT.	375	
			TOTAL		1375	



PLAN PROFILE RAMP "F"