

CUYAHOGA COUNTY
CUY — 71 — 5.72

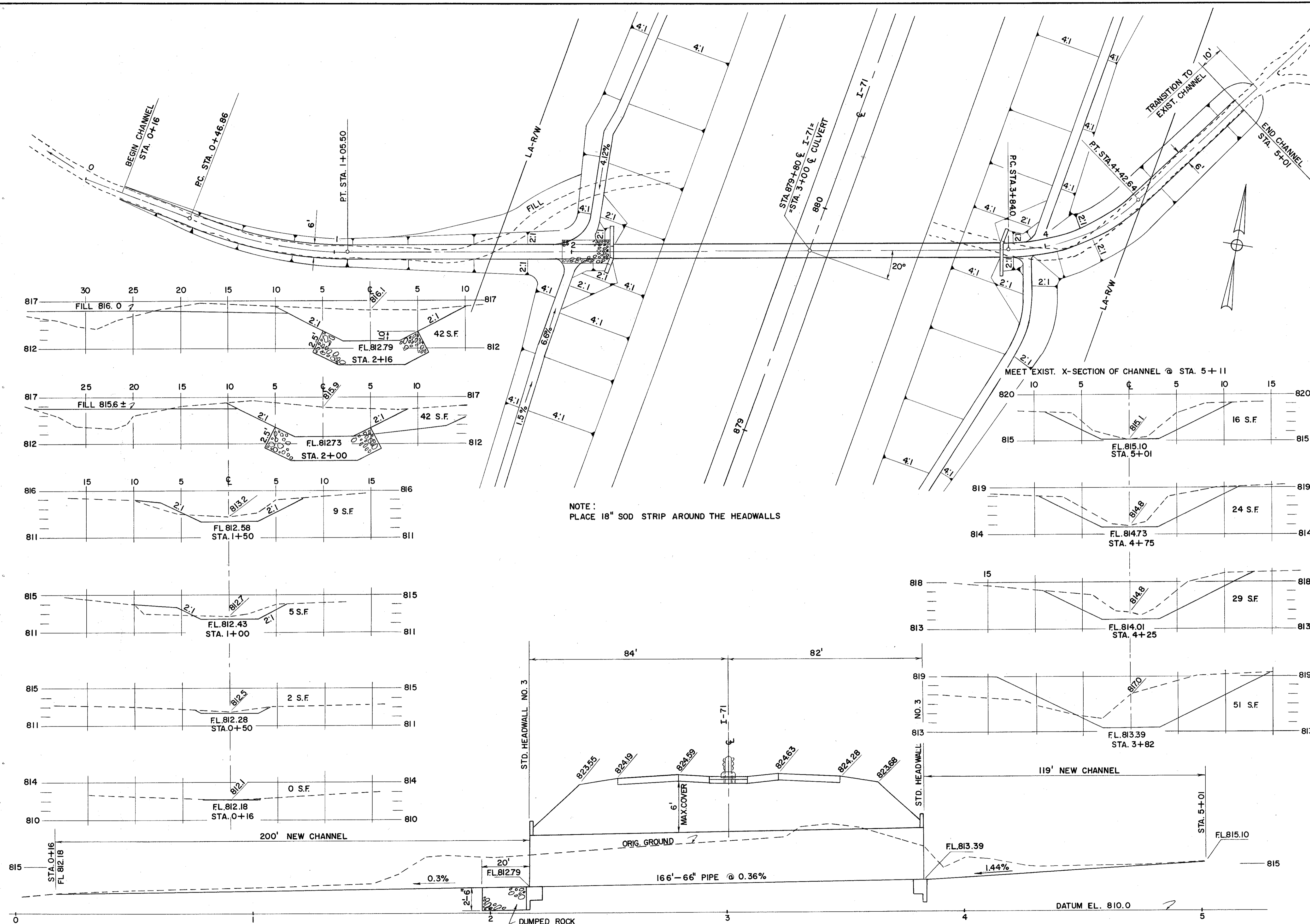
AREA: 148 ACRES
Q 50 178 C.F.S.

CULVERT DATA

TYPE: I-1 PIPE CLASS A-1 SEC. M-6.6 (a)
W/STD. NO. 3 HEADWALLS TYPE "B"
SIZE: 66"

ESTIMATED QUANTITIES

E-3	CHANNEL EXCAVATION	203 C.Y.
I-1	PIPE	166 L.F.
I-2	MASONRY	30 C.Y.
I-10	DUMPED ROCK CHANNEL PROTECTION	22 C.Y.
L-10	SODDING	15 S.Y.



NOTE: PLACE 18" SOD STRIP AROUND THE HEADWALLS

CFN 180710742
SLM 7.45, 66"
SEE SHEET 33

PACE ASSOCIATES OF OHIO
4500 EUCLID AVE. CLEVELAND 3, OHIO

MEDINA FREEWAY I 71
CULVERT DETAILS
STA. 879+80

SCALE	DATE
DESIGNED	DRAWN
TRACED	CHECKED
REVIEWED	DATE
REVISION	

SCALE: HOR. 1" = 20'
VERT. 1" = 5'