

STATE OF OHIO
DEPARTMENT OF HIGHWAYS

CUYAHOGA COUNTY
CUY-90-0.00

CUY-90-0.00
RELOCATED BASSETT ROAD
CUYAHOGA COUNTY

CITIES OF BAY VILLAGE & WESTLAKE

LIMITED ACCESS

THIS IMPROVEMENT IS ESPECIALLY DESIGNED FOR THROUGH TRAFFIC AND HAS BEEN DECLARED A LIMITED ACCESS HIGHWAY OR FREEWAY BY ACTION OF THE DIRECTOR OF HIGHWAYS IN ACCORDANCE WITH THE PROVISIONS OF SECTION 5511.02, REVISED CODE OF OHIO.

1969 SPECIFICATIONS

THE STANDARD SPECIFICATIONS OF THE STATE OF OHIO, DEPARTMENT OF HIGHWAYS, INCLUDING CHANGES AND SUPPLEMENTAL SPECIFICATIONS LISTED IN THE PROPOSAL SHALL GOVERN THIS IMPROVEMENT.

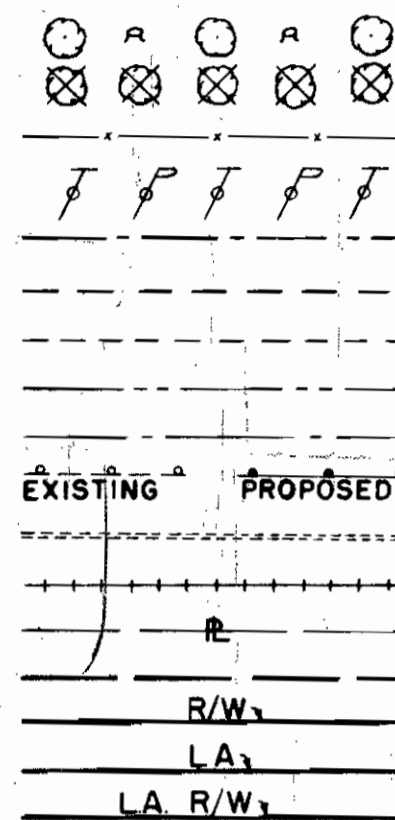
THE RIGHT-OF-WAY FOR THIS IMPROVEMENT WILL BE PROVIDED BY THE STATE OF OHIO.

I HEREBY APPROVE THESE PLANS AND DECLARE THAT THE MAKING OF THIS IMPROVEMENT WILL NOT REQUIRE THE CLOSING OF THE HIGHWAY TO TRAFFIC AND THAT PROVISIONS FOR THE MAINTENANCE AND SAFETY OF TRAFFIC WILL BE AS SET FORTH ON THE PLANS AND ESTIMATES.

- APPROVED: Charles W. Hysick
DATE: 4-18-69 DIVISION DEPUTY DIRECTOR
- APPROVED: C. H. Altstetter
DATE: 3-20-70 ENGINEER OF BRIDGES
- APPROVED: R. C. Battles CEH
DATE: 3-24-70 ENGINEER OF LOCATION & DESIGN
- APPROVED: George J. Thomsen
DATE: 3-24-70 DEPUTY DIRECTOR OF DESIGN & CONSTRUCTION
- APPROVED: T. H. Brown
DATE: 4-29-70 DEPUTY DIRECTOR OF RIGHT-OF-WAY
- APPROVED: Thomas M. Major
DATE: 4-29-70 DEPUTY DIRECTOR OF PLANNING & PROGRAMMING
- APPROVED: _____
DATE: _____ FIRST ASSISTANT DIRECTOR
- APPROVED: _____
DATE: _____ DIRECTOR OF HIGHWAYS

CONVENTIONAL SIGNS

- TREES AND STUMPS (EXISTING)
- TREES (TO BE REMOVED IN NON - L.A. R/W)
- FENCE LINE
- POLE LINE
- COUNTY LINE
- TOWNSHIP LINE
- SECTION LINE
- CORPORATION LINE
- CENTER LINE
- GUARD RAIL
- DRAIN PIPE
- RAILROAD
- PROPERTY LINE
- EXISTING RIGHT OF WAY
- PROPOSED RIGHT OF WAY
- PROPOSED LIMITED ACCESS RIGHT OF WAY
- PROPOSED LIMITED ACCESS AND RIGHT OF WAY



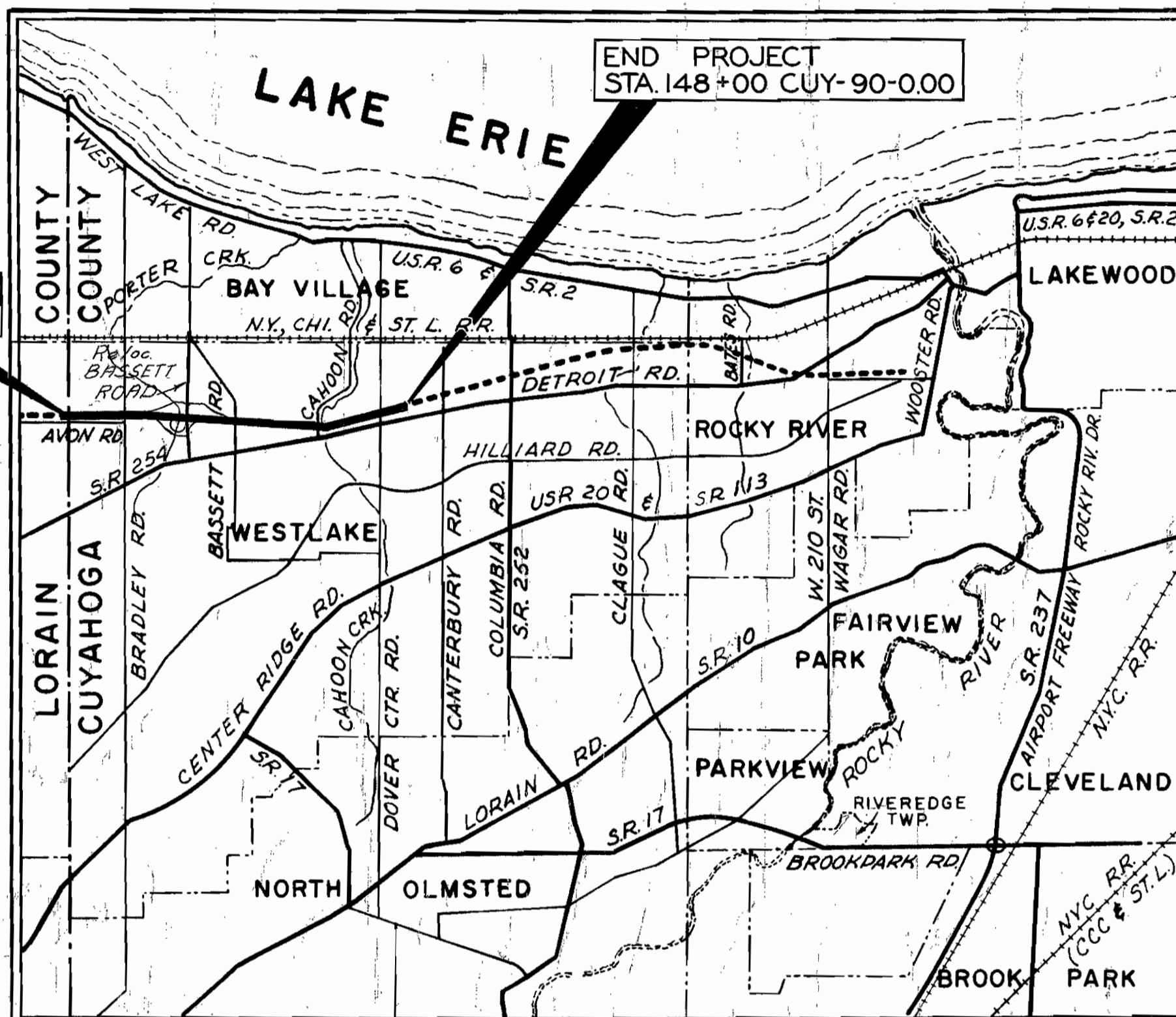
INDEX OF SHEETS

TITLE SHEET	1
DESIGN DESIGNATION	2
SCHEMATIC LAYOUT PLAN	2-4
TYPICAL SECTIONS	5-13
GENERAL NOTES	14-15
GENERAL SUMMARY	16-19
CALCULATIONS	20-21
SUMMARY OF TABLES	22-27
SPECIAL CONSTRUCTION DETAILS	28-34
PLAN AND PROFILES	35-50
CROSS SECTIONS	51-80
BASSETT ROAD INTERCHANGE	81-83
RAMP AND TAPER DETAILS	84-121
LOCAL ROADS	122-206
SUPERELEVATION TABLES	207-209
STRUCTURES 20' SPAN AND UNDER	210-224, 314, 315, 316 & 317
SANITARY AND WATER LINES	225-240 & 239A
LIGHTING DETAILS	241-247
TRAFFIC CONTROL DEVICES	248-271
STRUCTURES OVER 20' SPAN	285-313
RIGHT OF WAY & FENCE	318-348

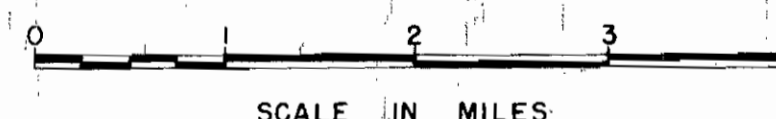
NOTE: SHEETS 272 THRU 284 NOT USED

BEGIN PROJECT STA. 0+00 CUY-90-0.00

END PROJECT STA. 148+00 CUY-90-0.00



LOCATION MAP

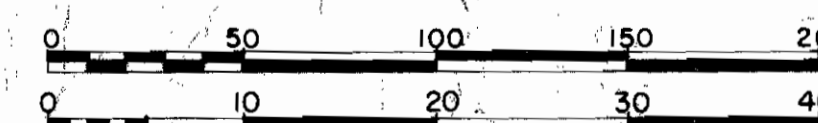


PORTION TO BE IMPROVED
STATE HIGHWAYS
OTHER ROADS

SCALES

PLAN 1" = 50'
PROFILE - HORIZONTAL 1" = 50'
PROFILE - VERTICAL 1" = 5'
CROSS SECTIONS 1" = 10'

GRAPHIC SCALES



I-90-1(68)10 LINE DATA

BEGIN PROJECT STA. 0+00
END PROJECT STA. 148+00
NET LENGTH OF PROJECT: 14,800.00 LIN. FT. OR 2.803 MILES
ADD FOR APPROACHES:

SEE SHEET NO. 2: 11,309.40 LIN. FT.

NET LENGTH OF WORK: 26,109.40 LIN. FT. OR 4.944 MILES

SU-1557(2)

RELOCATED BASSETT ROAD
BEGIN PROJECT STA. 145+00
END PROJECT STA. 159+50

NET LENGTH OF PROJECT: 1,450.00 LIN. FT. OR 0.274 MILES
ADD FOR APPROACHES

SEE SHEET NO. 2: 3462.57 LIN. FT.

NET LENGTH OF WORK: 4912.57 LIN. FT. OR 0.930 MILES

TOTAL LENGTH OF PROJECT: 16,250.00 LF
OR 3.077 MILES

TOTAL LENGTH OF WORK: 31,021.97 LF
OR 5.875 MILES

00295

FILE NO. CUY-90-0.00
DATE OF LETTING _____
CONTRACT NO. _____

STANDARD DRAWINGS

BP-1	6-1-65	CB-6	6-1-65	GR-5	1-15-68	HL-1	11-1-65
BP-2	12-1-69	CB-8	9-1-69	GR-6	7-15-68	HL-2	11-1-65
BP-3	12-1-68			HW-3	6-1-65	HL-3	11-1-65
BP-4	12-1-68	F-1	3-10-69	HW-E	6-1-65	HL-4	1-1-66
BP-5	6-1-65	F-6	10-1-66	L-1	6-1-65	SP-53	6-30-61
BP-7	1-1-66	F-3	3-10-69	MC-1	6-13-69	AS-1-67	6-12-69
CB 2+2-A & B	6-1-65	F-5	3-10-69	MC+3	6-20-69	SD-1-65	11-8-65
CB 2-3 & 2-4	6-1-65	FACI-1	9-15-67	MC-4	6-13-69	BR-1-65	11-24-65
CB-3	6-1-65	FACI-2	6-1-65	MC-5	6-1-65	RB-1-55	2-2-59
CB-3A	6-1-65	MC-6	6-1-65	MC-7	10-1-68	BR-2-67	8-17-69
CB-4	9-1-69	BP-6	6-1-65	MH-1	10-1-68	MC-8	12-1-67
CB-5	9-1-69	GR-2B	2-15-68	MH-1A	10-1-68	BR-1-67	2-1-68

SUPPLEMENTAL SPECIFICATIONS

801	1-1-69
808	11-14-69
811	1-1-69
815	1-1-69
816	1-1-69
836	6-17-69
806	1-1-69
1001	1-1-69
938	8-12-69

PREPARED AND RECOMMENDED BY
SHAFFER, PARRETT AND ASSOCIATES
CONSULTING ENGINEERS
MANSFIELD OHIO WOOSTER

DEPARTMENT OF TRANSPORTATION
FEDERAL HIGHWAY ADMINISTRATION
BUREAU OF PUBLIC ROADS

APPROVED

DIVISION ENGINEER

DATE

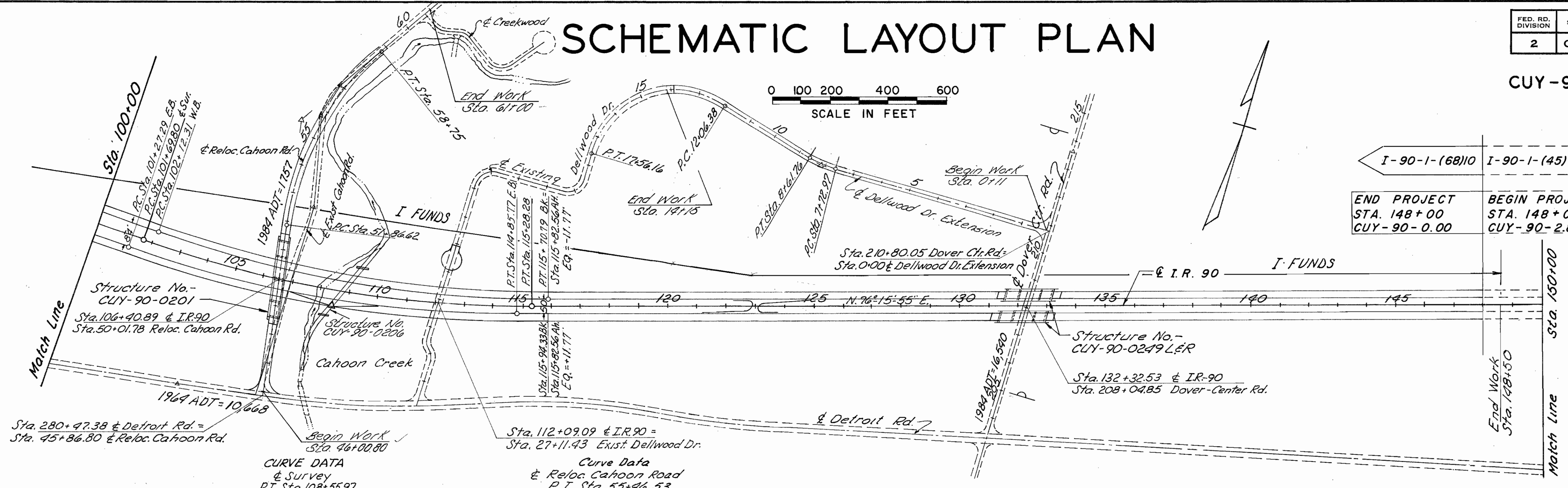
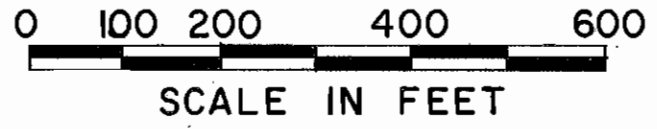
MICROFILMED
JUL 1 0 1984

SCHEMATIC LAYOUT PLAN

FED. RD. DIVISION	STATE	PROJECT
2	OHIO	

4
348

CUY-90-0.00



I-90-1-(68)10	I-90-1-(45)12
END PROJECT STA. 148+00 CUY-90-0.00	BEGIN PROJECT STA. 148+00 CUY-90-2.80

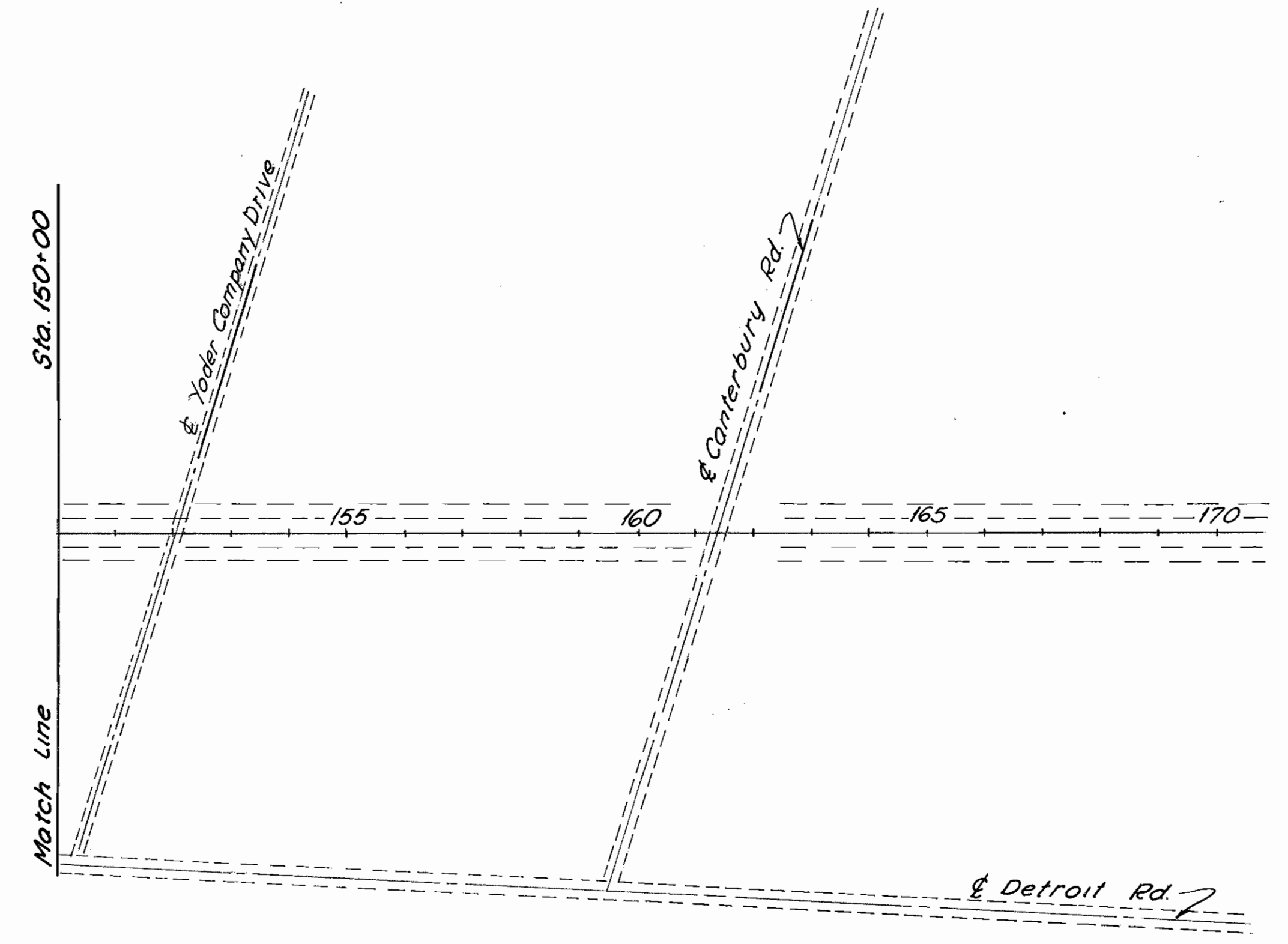
CURVE DATA
& Survey
P.I. Sta. 108+55.97
Δ = 19°55'28"
D = 1°28'
R = 3906.53'
L = 1358.48'
T = 686.17'
E = 59.80'

Curve Data
& Reloc. Cahoon Road
P.I. Sta. 55+46.53
Δ = 41°18'10"
D = 6°00'
R = 954.93'
L = 638.38'
T = 359.91'
E = 65.58'

Curve Data
& Dellwood Dr. Extension
P.I. Sta. 8+17.65
Δ = 15°58'58"
D = 18°00'
R = 318.31'
L = 88.79'
P.I. Sta. 15+97.35
Δ = 105°00'
D = 19°05'55"
R = 300'
L = 522.78'
E = 192.81'

CITY OF WESTLAKE

— F&C Sign Locations



CUY-90-0.00

± SURVEY - I.R. 90
CURVE DATA
 P.I. Sta 108+55.97
 $\Delta = 19^{\circ}55'28''$
 $D = 1^{\circ}28'$
 $R = 3906.53'$
 $L = 1358.48'$
 $T = 686.17'$
 Superelev. = .035'/ft

ESTIMATED QUANTITIES

603	Conduit Type A	707.03	216 Lin. Ft.
	Gauge 5-3		32.8 Cu. Yds.
602	Concrete Masonry Class-C		387 Cu. Yds.
601	Concrete Rock Channel Protection		

Note: For headwall details see sheet No. 220
 Note: See Channel Sections Sheet No. 215 & 216 For Channel Excavation
 Note: Earthwork & Seeding for Reloc. Cahoon Creek is Added To Cahoon Road Plan & Profile Shf. No. 183

NEAREST UPSTREAM STRUCTURES

LOCATION: 213 ft. upstream at Nursery Drive
 TYPE: Concrete Arch
 SIZE: 12'x13'x40' (130 S.F. opening)

LOCATION: 278 ft. upstream at Detroit Road
 TYPE: Conc. Box Culvert (Inlet Elev 653.00)
 SIZE: 14'x7'x117' (98 S.F. opening)

NEAREST DOWNSTREAM STRUCTURES

LOCATION: 0.2 Mi. downstream at Creekwood Ln.
 TYPE: Concrete Box Culvert
 SIZE: 15'x6.5'x12' (97.5 S.F. opening)

LOCATION: 1.0 Mi. downstream at Nickel Plate R.R.
 TYPE: Concrete Arch
 SIZE: 10'x11' (93 S.F. opening)

PROPOSED STRUCTURE

TYPE: Sectional corrugated metal structure

SIZE: 16'7" x 10'-1"

SKEW: 30°00' L.F.

LENGTH: 216'

SLOPE: -0.48%

HEIGHT OF FILL: 5'±

DRAINAGE AREA: 6.8 sq miles

Q50: 1285 c.f.s.

HIGHEST KNOWN H.W.: 659.2 (1959)

OUTLET VELOCITY: 11.4 ft/sec

FOUNDATION INVESTIGATION LEGEND

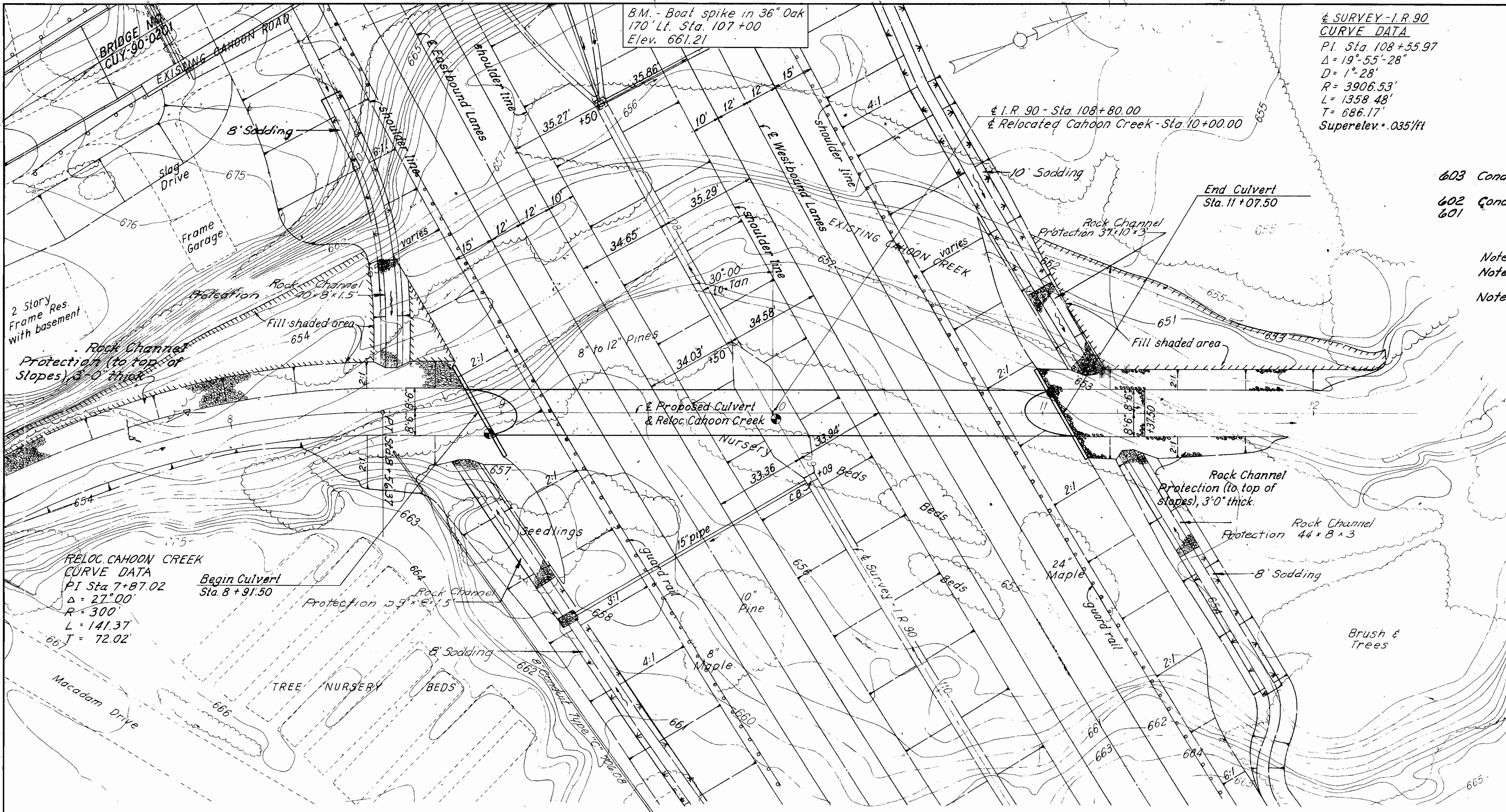
● - Indicates core boring location
 ○ - Indicates rod sounding location

SHAFFER, PARRETT AND ASSOCIATES
 Consulting Engineers
 MANSFIELD, OHIO.

STRUCTURE NO. CUY-90-0206
OVER CAHOON CREEK
 CUYAHOGA COUNTY I.R. 90
 STA. 108 + 80.00

DESIGNED	DRAWN	TRACED	CHECKED	REVIEWED	DATE	REVISED
RAK	Bob	UL				

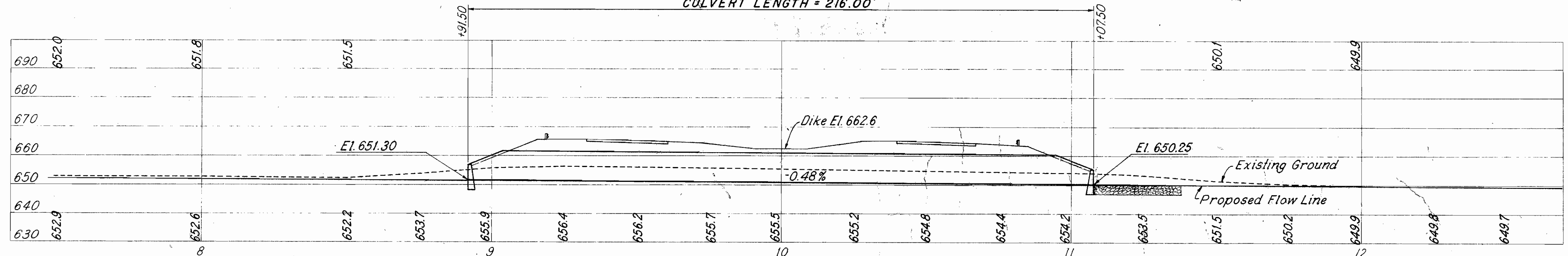
PIPE CULVERT DETAILS



RELOC. CAHOON CREEK
CURVE DATA
 P.I. Sta 7+87.02
 $\Delta = 27^{\circ}00'$
 $R = 300'$
 $L = 141.37'$
 $T = 72.02'$

B.M. - Boat spike in 36" Oak
 170' Lt. Sta. 107+00
 Elev. 661.21

SCALE
 1" = 20'
 CULVERT LENGTH = 216.00'



MICROFILMED
 JUL 1 01964

F.R.H. 1-12-66
 U.L. 1-13-66