

MILES ROAD

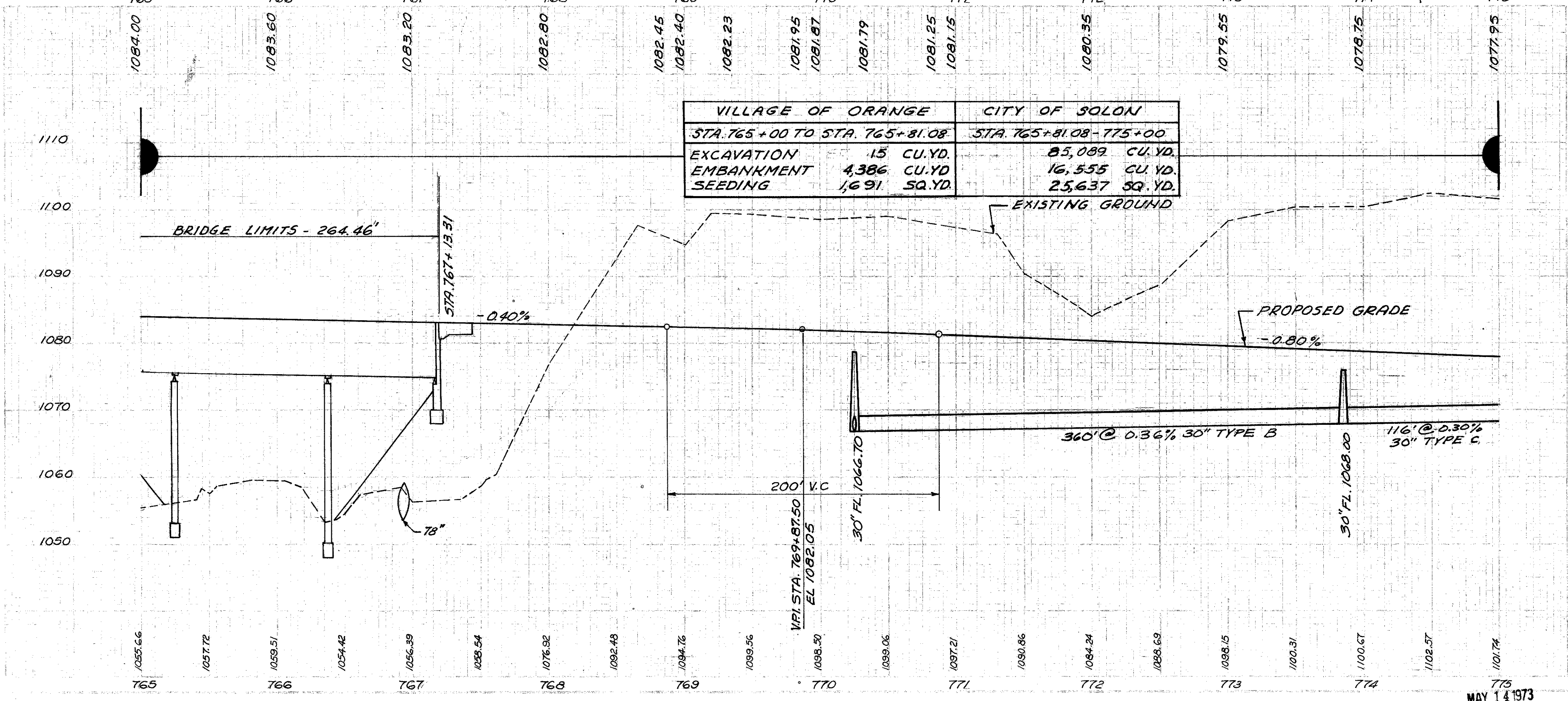
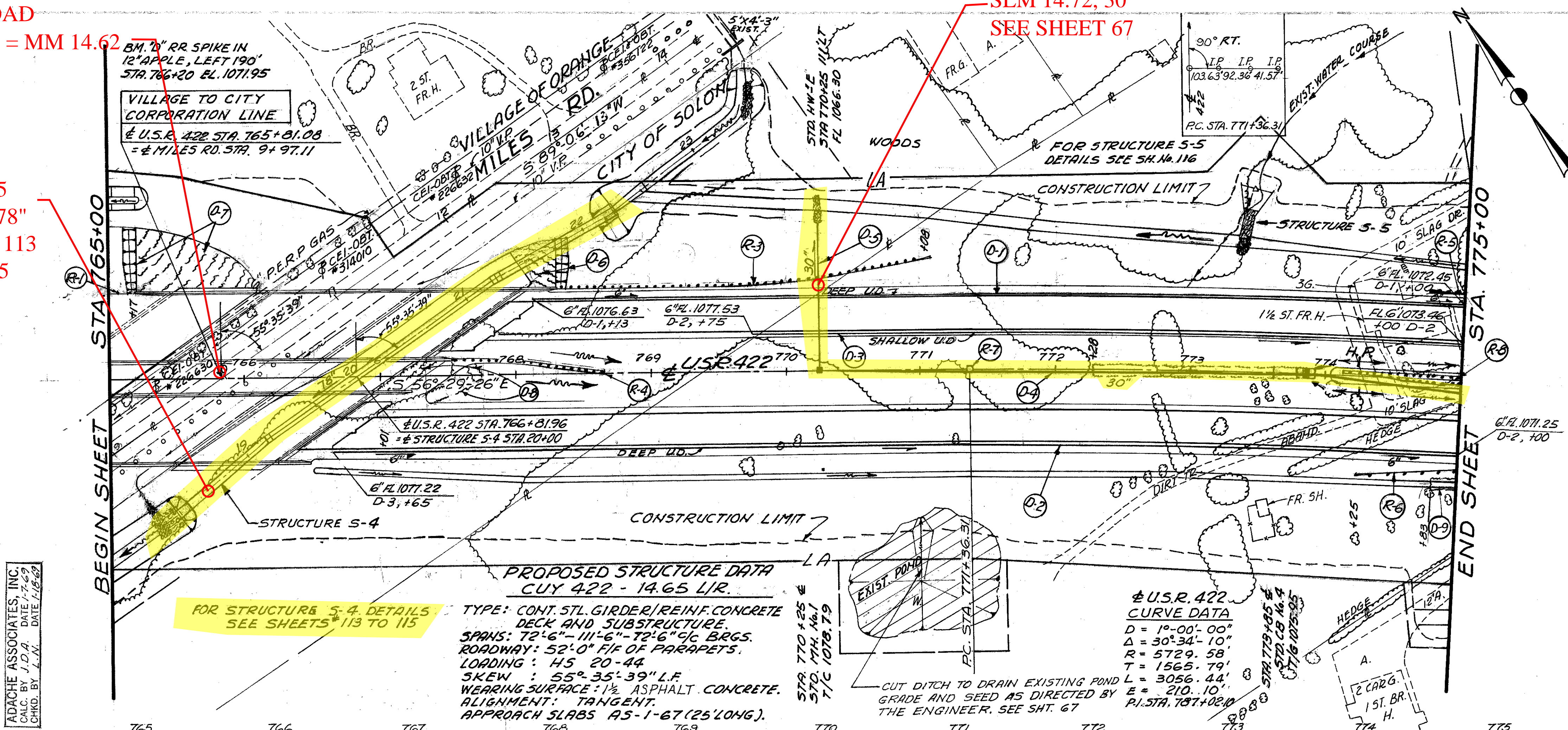
SLM 14.62 = MM 14.62

SLM 14.72, 30"  
SEE SHEET 67

CUYAHOGA COUNTY  
CUY. 422-13.96

FED. RD. DIST. NO.	STATE	PROJECT	25
2	OHIO	U-468(B)	292

SFN 1814835  
SLM 14.71, 78"  
SEE SHEET 113  
114 AND 115



ESTIMATED QUANTITIES

ITEM	QTY	UNIT	PRICE	TOTAL
601 602 ROCK CONC. & REF. STD. CURBS IN VILLAGE OF ORANGE	1	EA	17	17
604 CIP. MASONRY MONUM. R-2B	1	EA	17	17
605 PIPE UNDERDRIN TYPE B	1	LF	17	17
606 GLASS RAIL TYPE S	1	LF	17	17
607 SPERM JUTE SLOPE PROTECT. MATING	1	SQ. YD.	17	17
608 1/2 ST. FR. H.	1	EA	17	17
609 10' SLAG DE.	1	EA	17	17
610 6" FL. 1072.45 D-1	1	EA	17	17
611 10' SLAG DE.	1	EA	17	17
612 1/2 ST. FR. H.	1	EA	17	17
613 6" FL. 1073.46 D-2	1	EA	17	17
614 10' SLAG DE.	1	EA </tr		

ADACHE ASSOCIATES, INC.  
CALC. BY J.O.A. DATE 1-7-73  
CHKD. BY E.N. DATE 1-15-73

FOR STRUCTURE S-4 DETAILS  
SEE SHEETS 113 TO 115

PROPOSED STRUCTURE DATA  
CUY 422 - 14.65 L/R.

TYPE: CONT. STL GIRDER/REINF. CONCRETE  
DECK AND SUBSTRUCTURE

SPANS: 72'-6" - 111'-6" - 72'-6" GL BRGS.

ROADWAY: 52'-0" F/F OF PARAPETS.

LOADING: HS 20-44

SKEW: 55° 35' 39" L.F.

WEARING SURFACE: 1 1/2" ASPHALT CONCRETE.

ALIGNMENT: TANGENT.

APPROACH SLABS AS-1-67 (25' LONG).

U.S.R. 422  
CURVE DATA

D = 1°-00'-00"

Δ = 30°-34'-10"

R = 5729.58

T = 1565.79

L = 3056.44

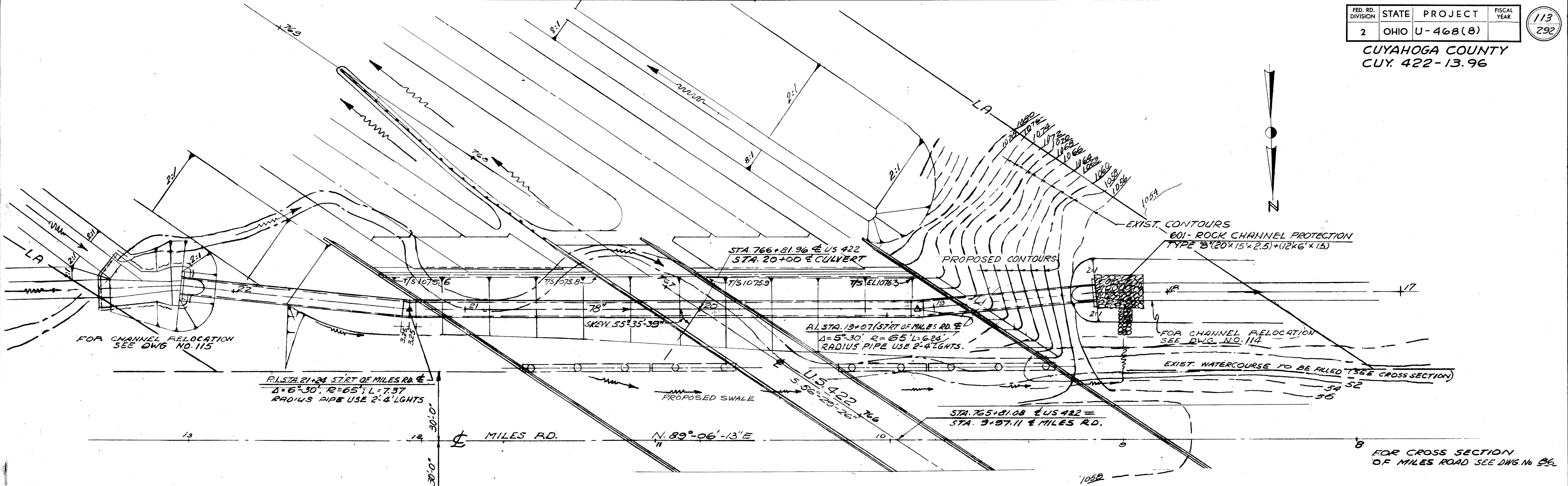
E = 210.10'

P.I. STA. 787+02.10

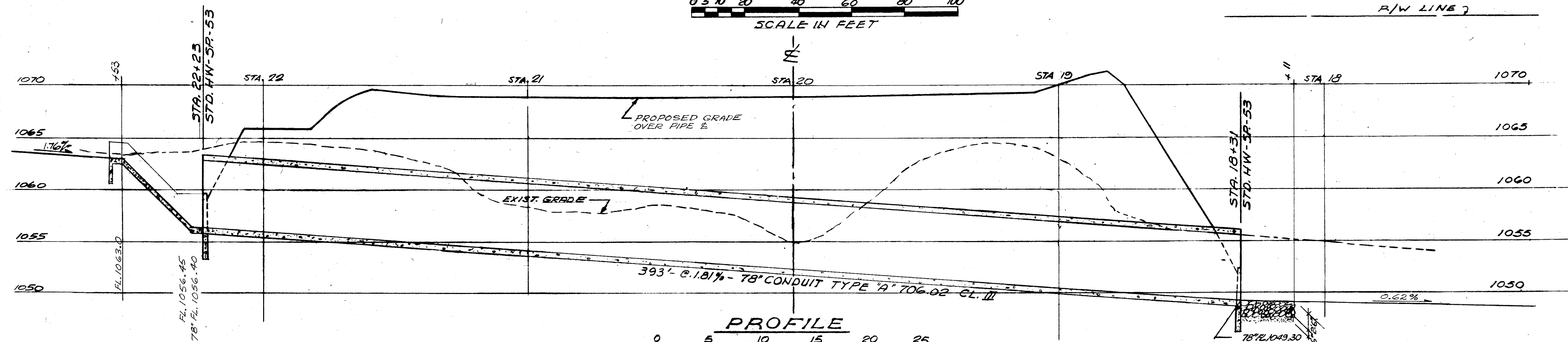
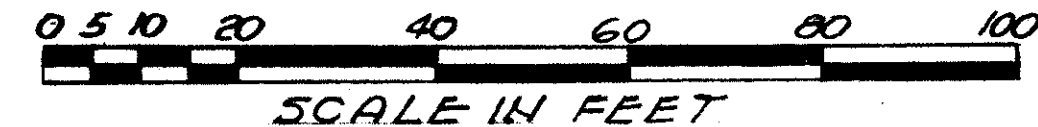
CUT DITCH TO DRAIN EXISTING POND  
GRADE AND SEED AS DIRECTED BY  
THE ENGINEER. SEE SHT. 67

MAY 14 1973

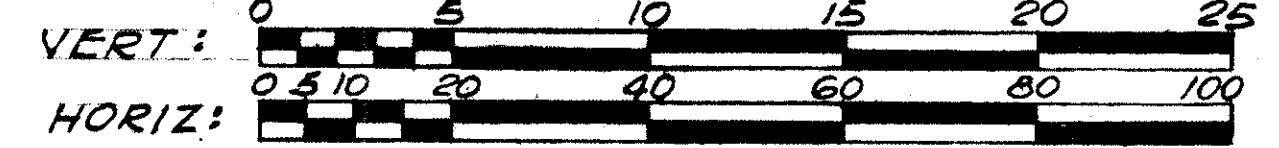
PLAN & PROFILE STA. 765+00 TO STA. 775+00



PLAN



PROFILE



DRAINAGE AREA = 277 ACRES  
DISCHARGE Q<sub>25</sub> = 400 C.F.S.

ESTIMATED QUANTITIES FOR SHEETS No 106, 107, 108

- |  |             |
|--|-------------|
| 603 - 78" R.C. CONDUIT TYPE "A" 706.02 CLASS III                     | - 377 L.F.  |
| 603 - 78" R.C. RADIUS CONDUIT TYPE "A" 706.02 CLASS III (65' RADIUS) | - 16 L.F.   |
| 602 - CONCRETE MASONRY   | - 6 T.C.Y.  |
| 601 - ROCK CHANNEL PROTECTION TYPE "B"                               | - 90 C.Y.   |
| 601 - RIP RAP USING 6" R.C. SLAB                                     | - 70 S.Y.   |
| 203 - EMBANKMENT   | - 883 C.Y.  |
| 203 - EXCAVATION NOT INCLUDING EMBANKMENT CONSTRUCTION               | - 1351 C.Y. |
| 660 - SODDING  | - 14 S.Y.   |

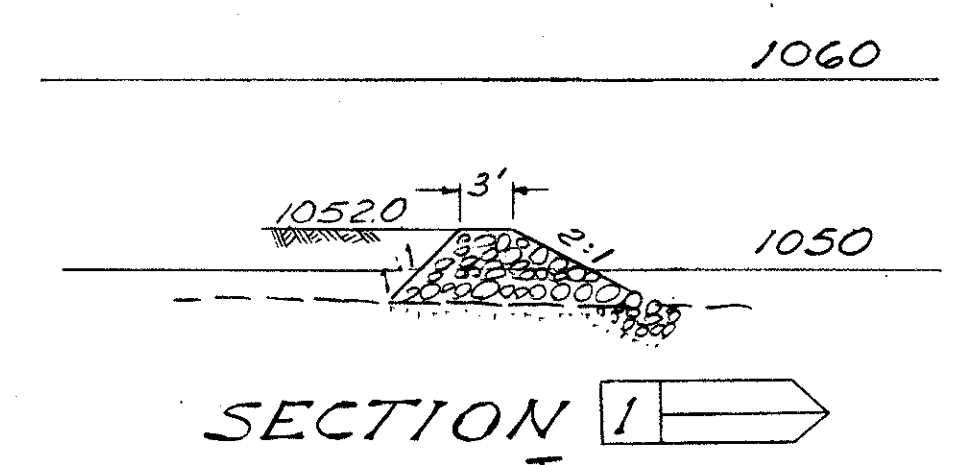
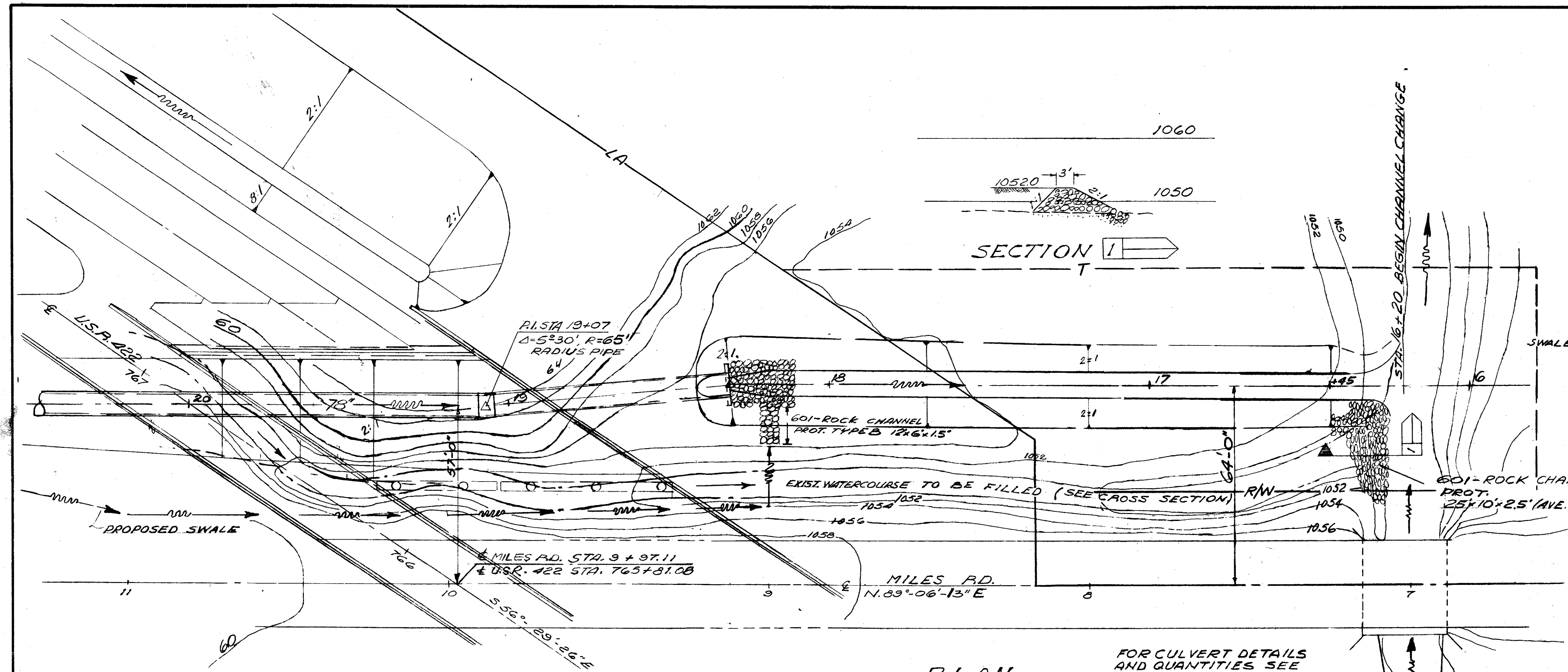
ADACHE ASSOCIATES, INC.  
CALC. BY L.N. DATE 2-1-77  
CHKD. BY R.W.H. DATE 12/17/76

ADACHE ASSOCIATES, INC., ENGINEERS  
CLEVELAND 42, OHIO

STRUCTURE S-4  
U.S.R. 422  
CULVERT DETAILS  
STA. 766+81.96 ±

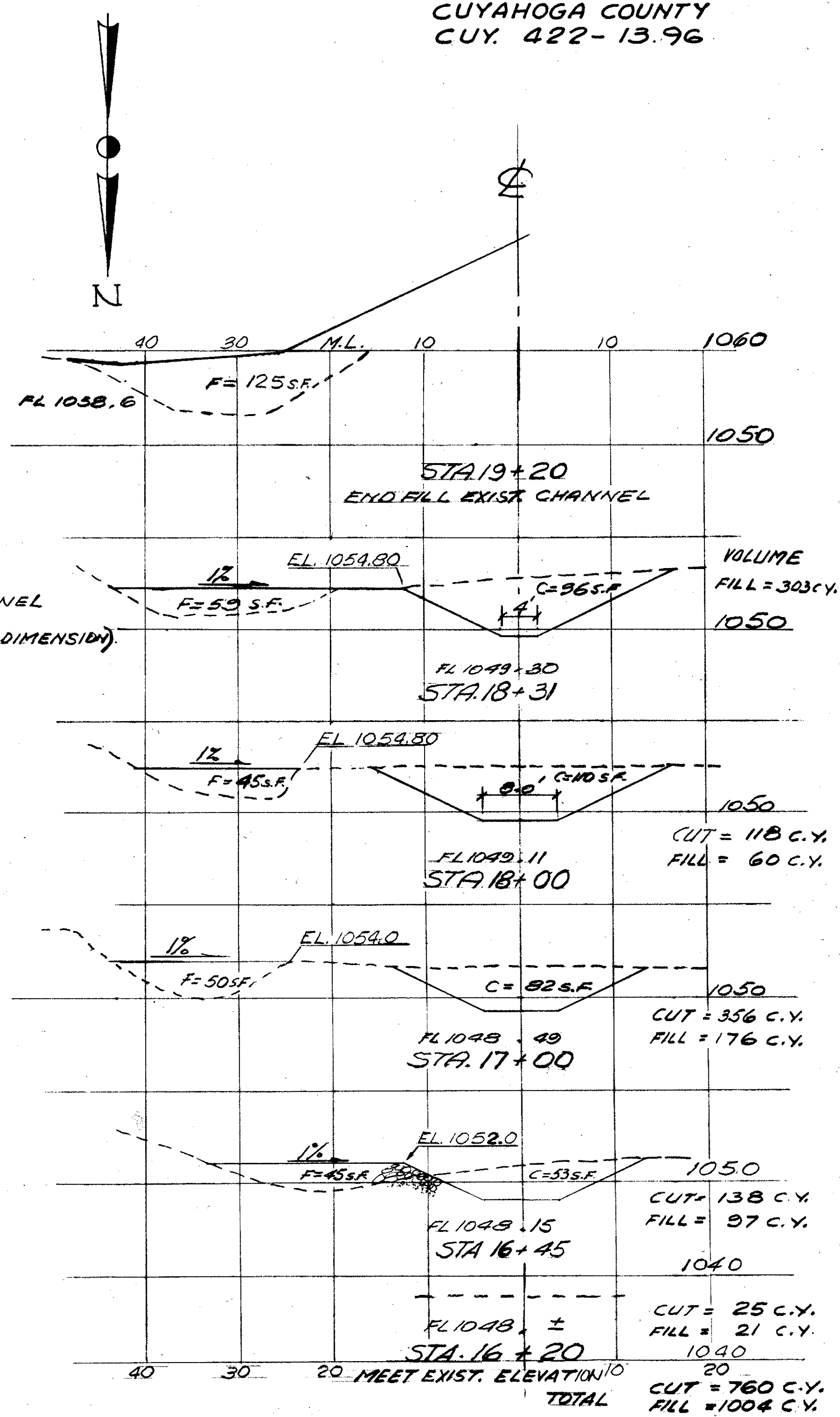
DESIGNED	DRAWN	CHECKED	REVISED	DATE
L.N.	J.M.	R.W.H.		

MAY 14 1973

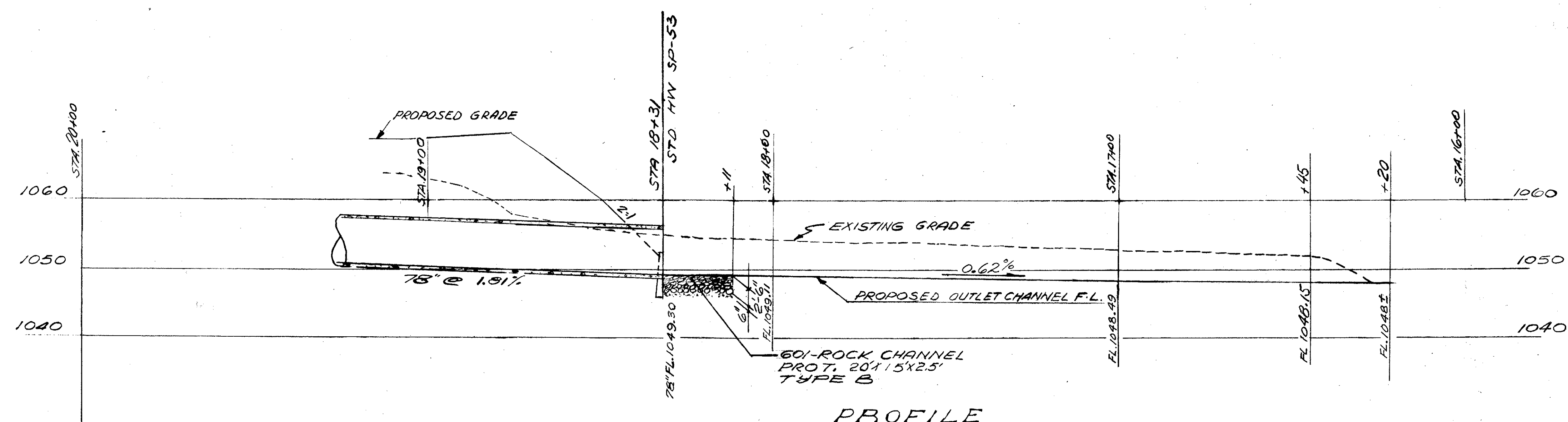


FOR CULVERT DETAILS AND QUANTITIES SEE DWG No. 113

PLAN  
SCALE IN FEET



CHANNEL CROSS SECTIONS  
SCALE IN FEET



PROFILE

HORIZ. : 0 5 10 20 40 60 80 100  
VERT. : 0 5 10 20 30 40 50  
SCALE IN FEET

ADACHE ASSOCIATES, INC.  
CALC. BY L.N. DATE 2-1-67  
CHKD. BY R.W.H. DATE 12-17-68

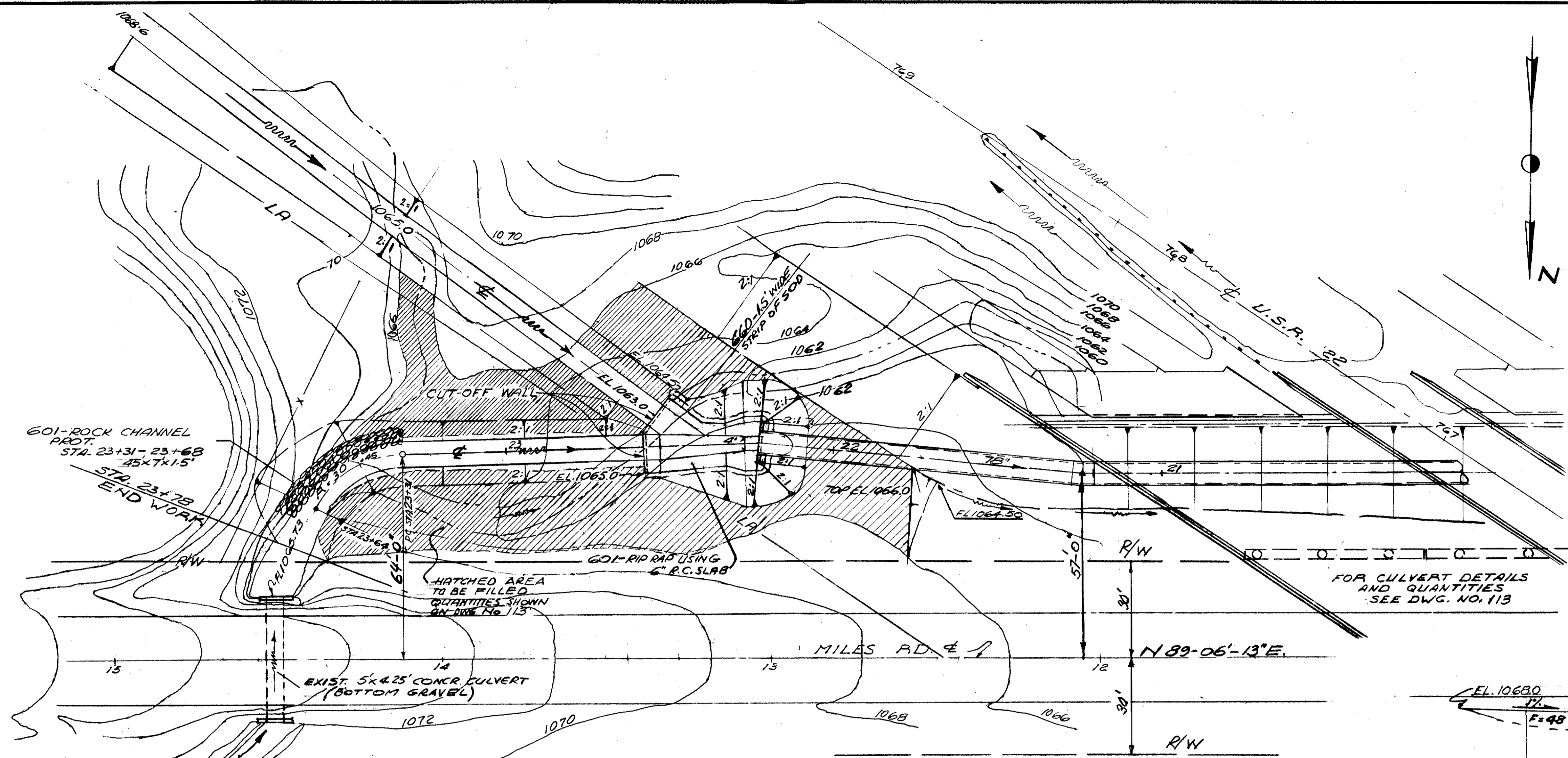
MAY 14 1973

ADACHE ASSOCIATES INC., ENGINEERS  
CLEVELAND 42, OHIO

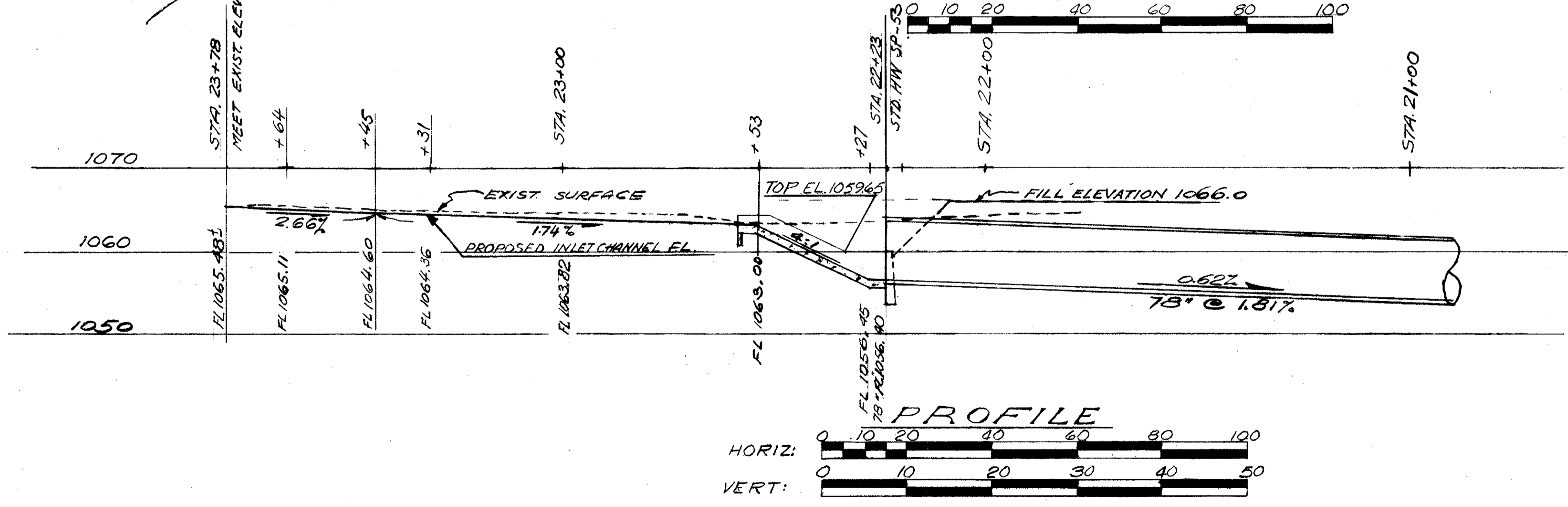
U.S.R. 422  
CHANNEL RELOCATION  
AT MILES RD.  
OUTLET CHANNEL  
STA. 16+20 TO 18+31

DESIGNED	DRAWN	CHECKED	REVISED	DATE
L.N.	J.K.			

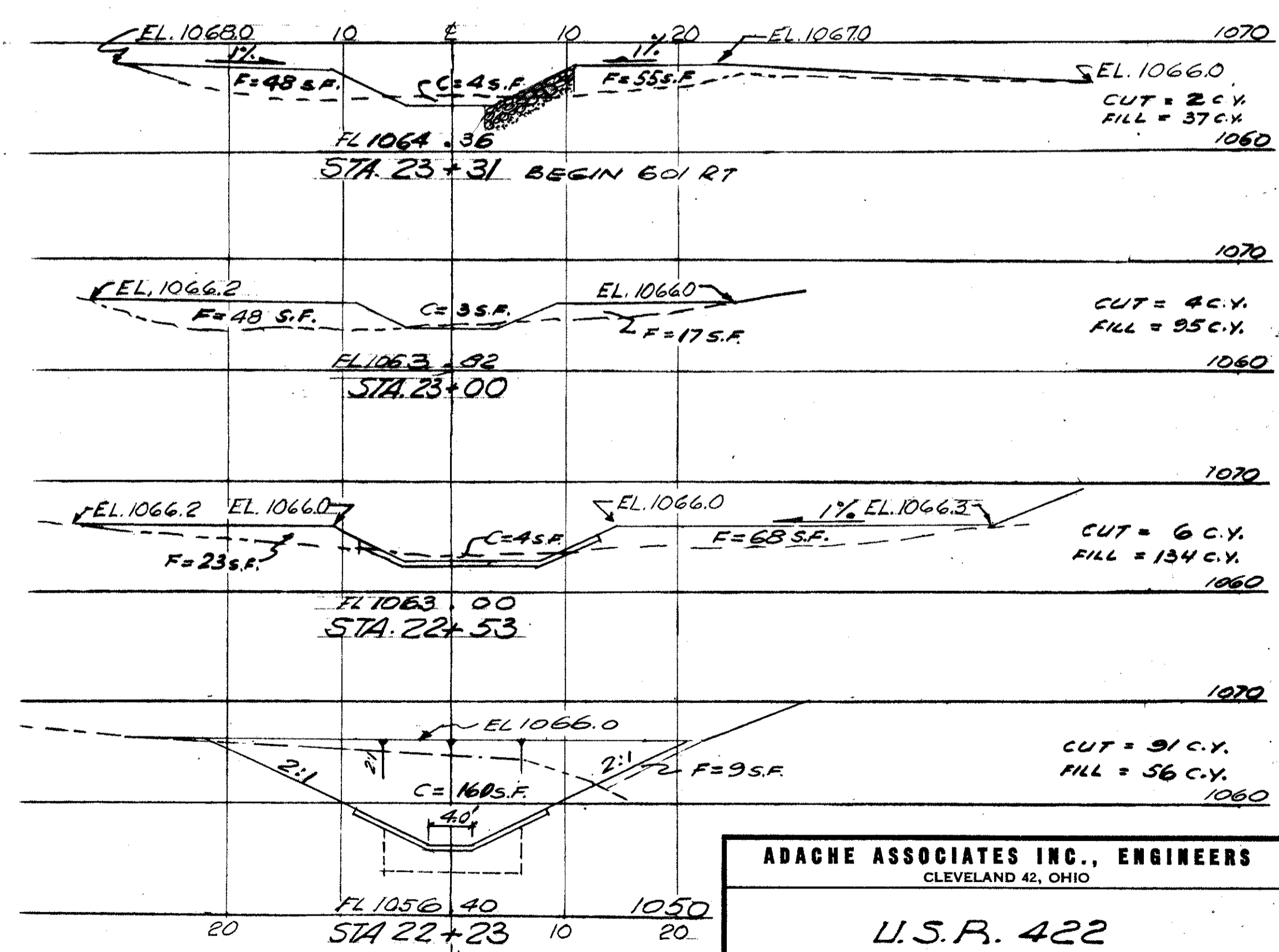
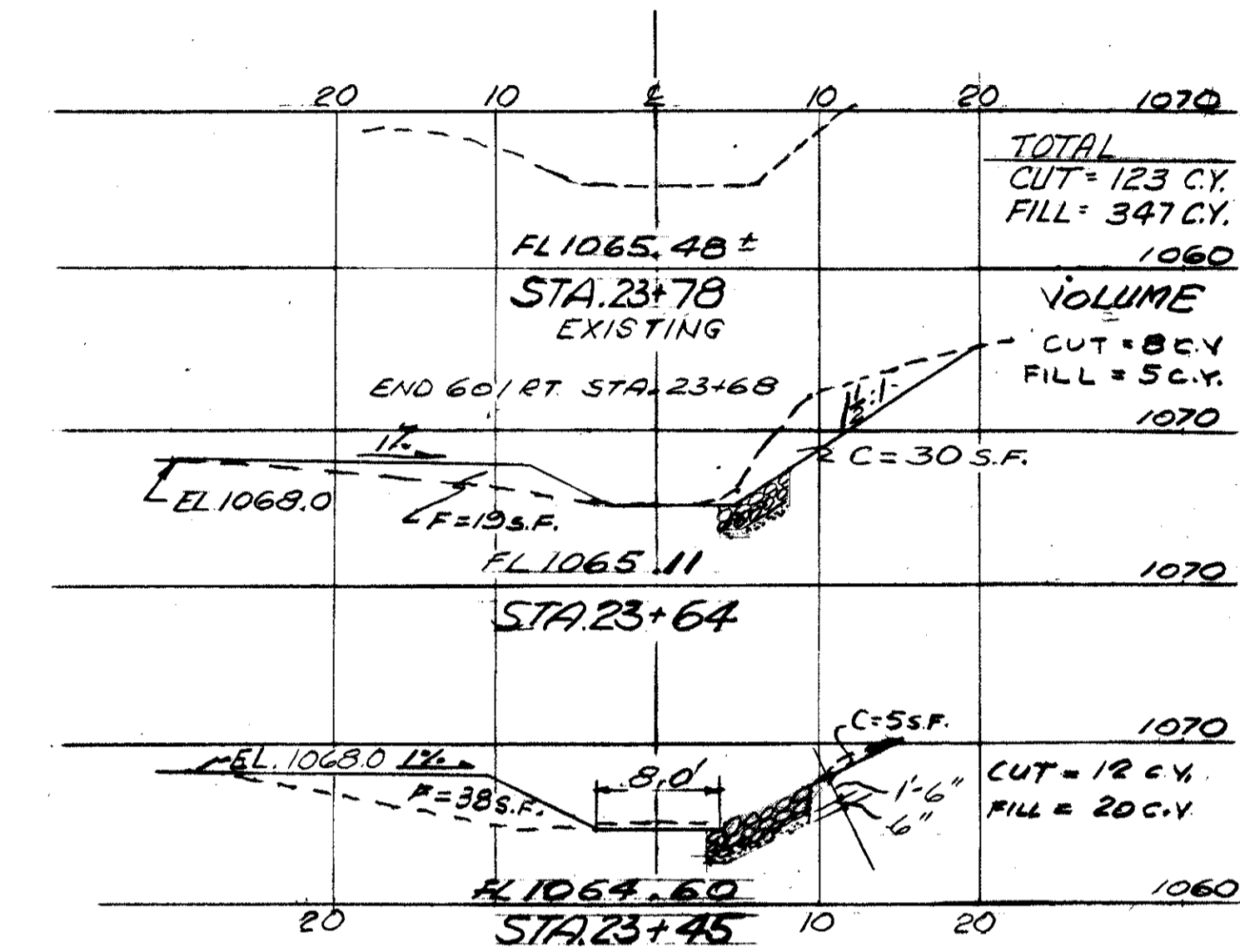
CUYAHOGA COUNTY  
C.U.Y. 422-13.96



PLAN



PROFILE



CHANNEL CROSS SECTIONS

ADACHE ASSOCIATES INC., ENGINEERS  
CLEVELAND 42, OHIO

U.S.R. 422  
CHANNEL RELOCATION  
AT MILES R.D.  
INLET CHANNEL  
STA. 22+23 TO STA. 23+78

MAY 14 1973

ADACHE ASSOCIATES, INC.  
CALC. BY L.N. DATE 2-1-67  
CHRG. BY R.W.H. DATE 12-1-68

DESIGNED	DRAWN	CHECKED	REVISED	DATE
L.N.	J.K.	R.W.H.		