

Problem Statement

Rear-end crashes are common on U.S. 422 when eastbound and westbound vehicles crash into vehicles queued during a red signal phase or queued waiting to make a left turn. This queueing resulted in 13 rear end crashes and 6 injuries between 2019 and 2021.

Proposed Countermeasures

Construct an eastbound and westbound left turn lane on U.S. 422 to reduce queueing on the eastbound and westbound approaches.

Reconstruct the traffic signal on mast arms.

Implement Flashing Yellow Arrow signal operation.

Crash History

16 Crashes – 2019 to 2021

13 Rear-End (all on U.S. 422)
Injuries (all Rear-End Crashes)

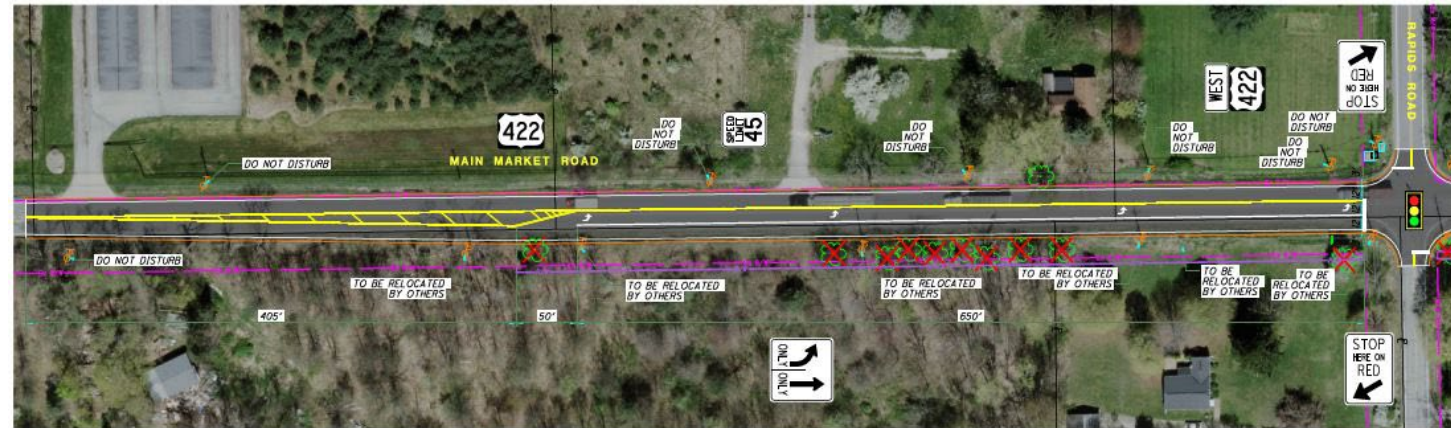
Contributing Factors

Following Too Closely & ACDA

Safety Benefit

Benefit Cost	
Total Project Cost	\$1,172,016
Expected Crash Reduction	\$1,143,785
Safety Benefit	3.23
Benefit/Cost	0.98

Proposed Improvements



Crash Diagram

