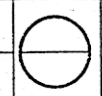


# COUNTY OF CUYAHOGA

## WEST 28th STREET

### CITY OF CLEVELAND

DATE		OHIO	
DATE		FHWA	
DATE		REGION 5	

CUYAHOGA COUNTY

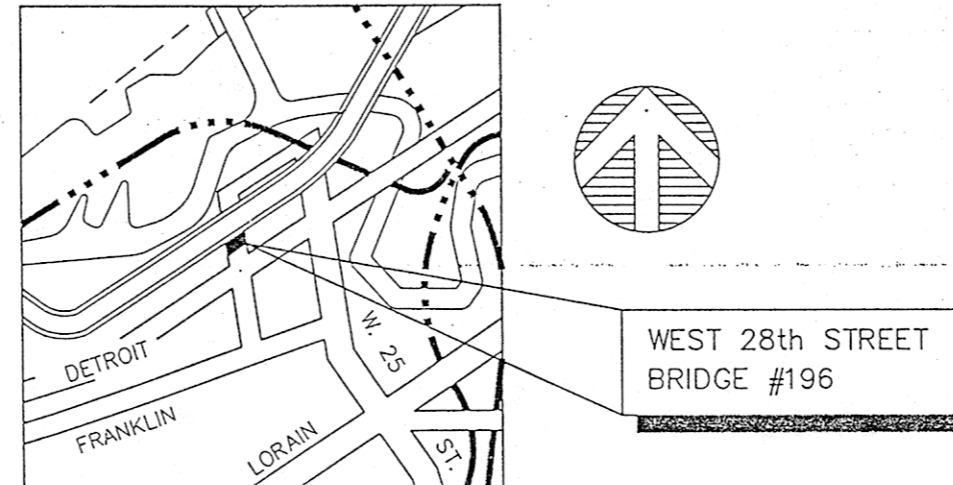
#### SPECIFICATION

THE STANDARD CONSTRUCTION AND MATERIALS SPECIFICATIONS OF THE STATE OF OHIO, DEPARTMENT OF HIGHWAYS, DATED JANUARY 1, 1991 INCLUDING ALL CHANGES AND SUPPLEMENTAL SPECIFICATIONS OF CUYAHOGA COUNTY, ARE A PART OF THE TERMS OF THE CONTRACT FOR THIS IMPROVEMENT AND SHALL APPLY TO ALL CONSTRUCTION AS CALLED FOR ON THE PLANS, OR IN THE PROPOSAL.

THE NUMBER OF CALENDER DAYS STIPULATED IN THE CONTRACT FOR THE COMPLETION OF THE PROJECT SHALL BE EFFECTIVE FROM THE DATE OF THE COUNTY ENGINEER'S WRITTEN NOTICE TO THE CONTRACTOR TO START CONSTRUCTION. ANY SUBSEQUENT LOSS OF TIME OCCASIONED BY A WRITTEN NOTICE FROM THE COUNTY ENGINEER TO SUSPEND OPERATIONS, BY REASON OF PREVAILING UNSATISFACTORY WEATHER CONDITIONS, SHALL NOT BE INCLUDED IN THE TIME STIPULATED FOR THE COMPLETION OF THE PROJECT.

THE STATIONS SHOWN ON THE PLANS ARE FOR CONSTRUCTION PURPOSES ONLY AND ARE NOT TO BE USED FOR RECORD.

THE CONTRACTOR SHALL COOPERATE WITH THE ENGINEER IN PROTECTING AND PRESERVING CORNERSTONES AND MONUMENTS THAT ARE WITHIN THE HIGHWAY AS REQUIRED BY SECTION 5519.05 OF THE REVISED CODE OF OHIO.



LOCATION PLAN

#### EXISTING BRIDGE DATA

DETAILS OF THE EXISTING STRUCTURE(S) ARE ON FILE IN THE OFFICES OF THE CUYAHOGA COUNTY ENGINEER, ROOM 1926, STANDARD BUILDING, CLEVELAND, OHIO.

#### STANDARD DRAWINGS

GR-1.1	DATED	5-6-91
GR-1.2	DATED	5-6-91
GR-2.1	DATED	5-6-91
GR-3.2	DATED	5-6-91
GR-4.2	DATED	5-6-91
F-1	DATED	11-10-83

#### INDEX OF DRAWINGS

TITLE SHEET	1
PARAPET DETAILS	2
MISCELLANEOUS DETAILS	3
ESTIMATED QUANTITIES	
MISCELLANEOUS DETAILS	4
GUARDRAIL	
LOCATION PLANS	5 - 7

CUYAHOGA COUNTY ENGINEER  
CLEVELAND OHIO

**WEST 28th STREET**  
CITY OF CLEVELAND  
MAIN AVENUE SUBWAY

#### TITLE SHEET

BRIDGE NO. 196 REPORT NO. 7185 DATE 8/22/91

NO. B-136

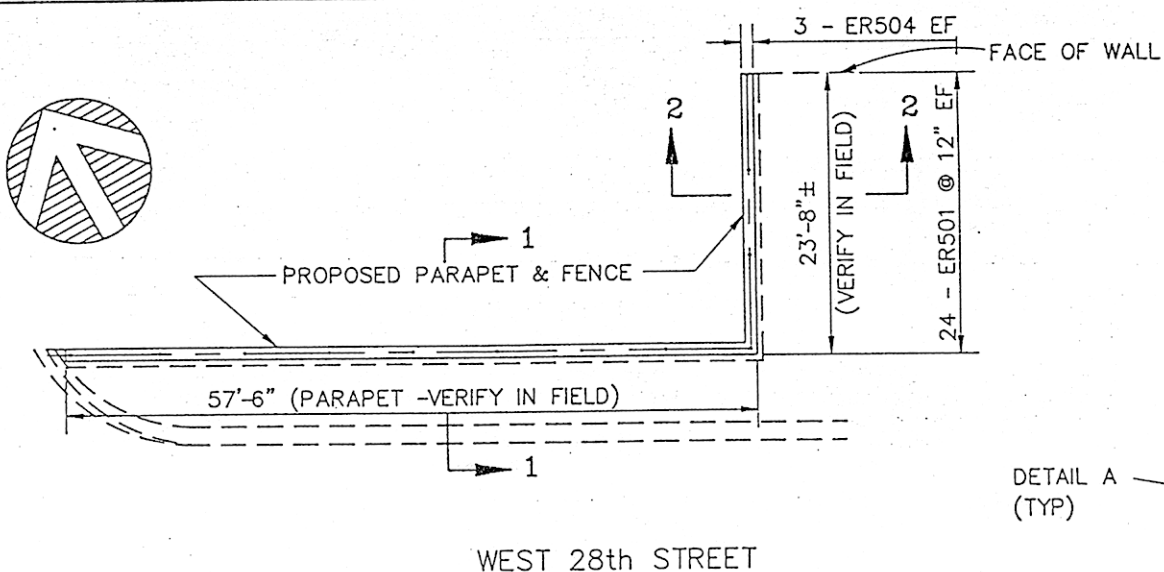
W28.DWG

1/7

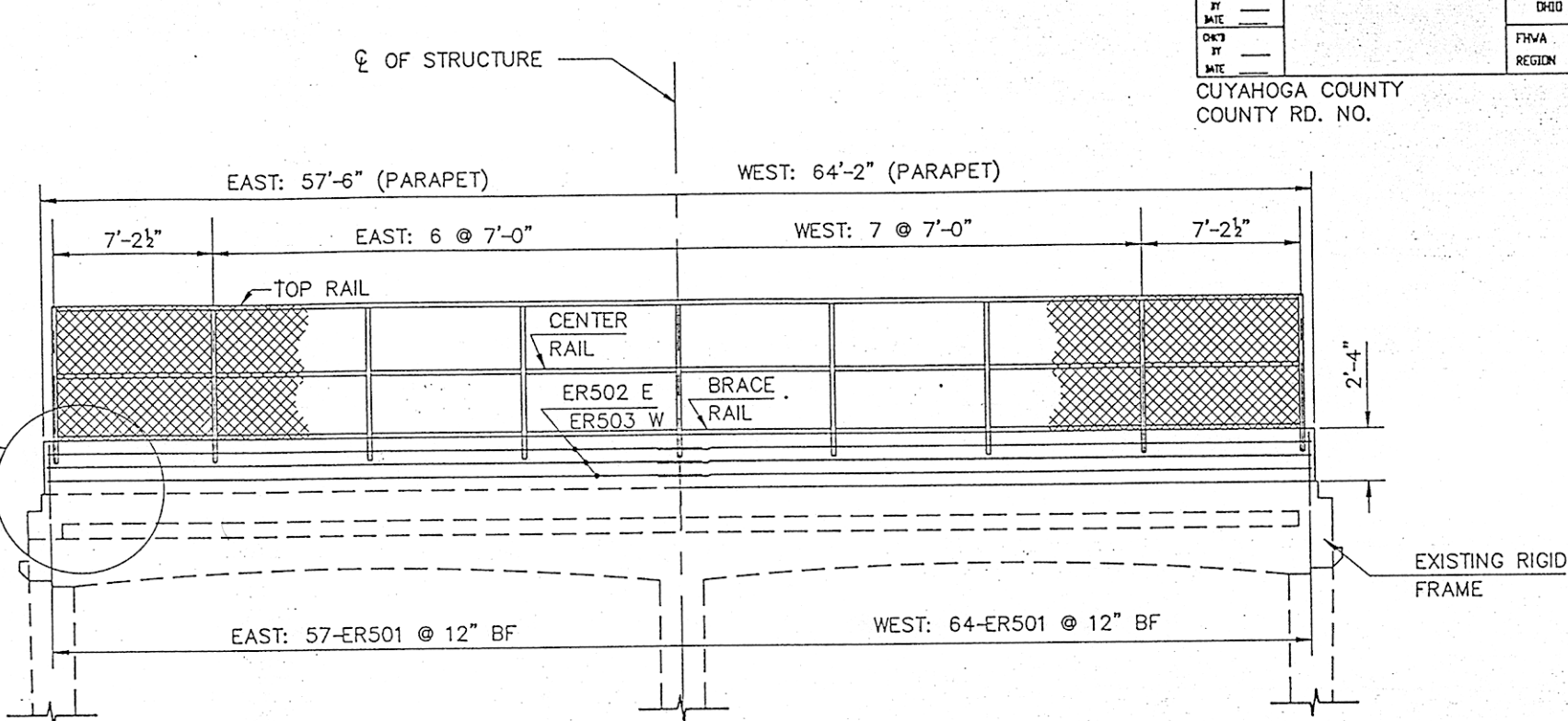
DESIGN PTA	DRAWN PTA	CHECKED	REVISED TO AS BUILT
---------------	--------------	---------	---------------------

*BR #196*

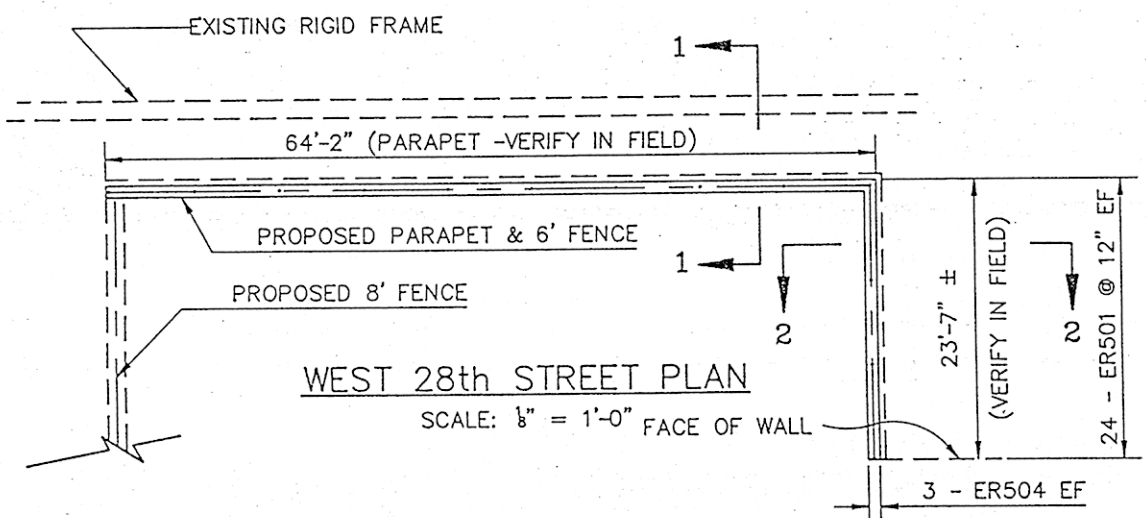
CUYAHOGA COUNTY  
COUNTY RD. NO.



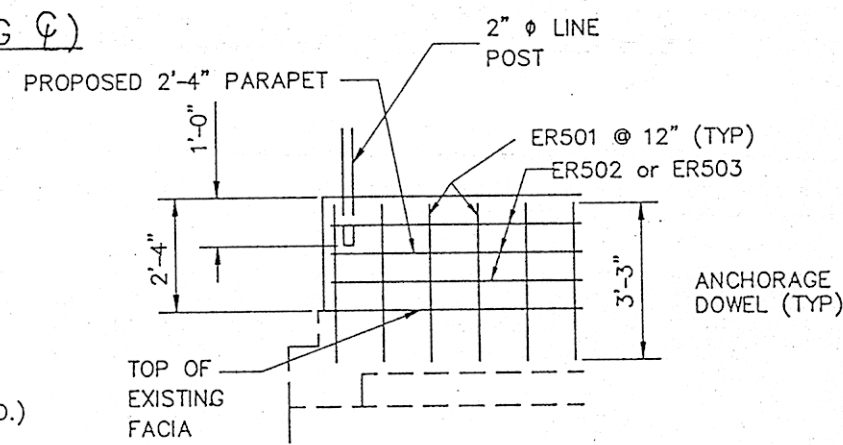
WEST 28th STREET



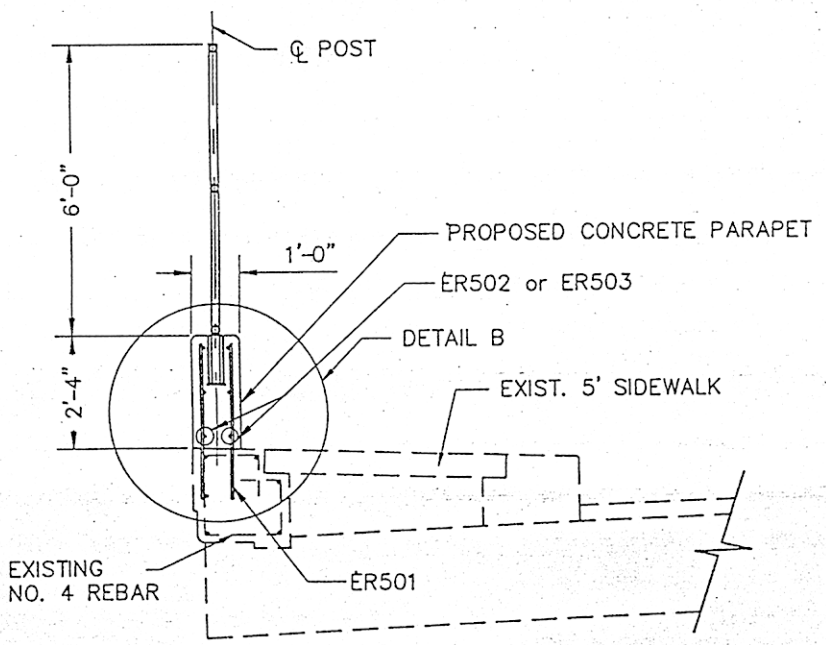
W. 28th ST. ELEVATION (ALONG  $\phi$ )  
(SCALE:  $\frac{1}{4}'' = 1'$ )



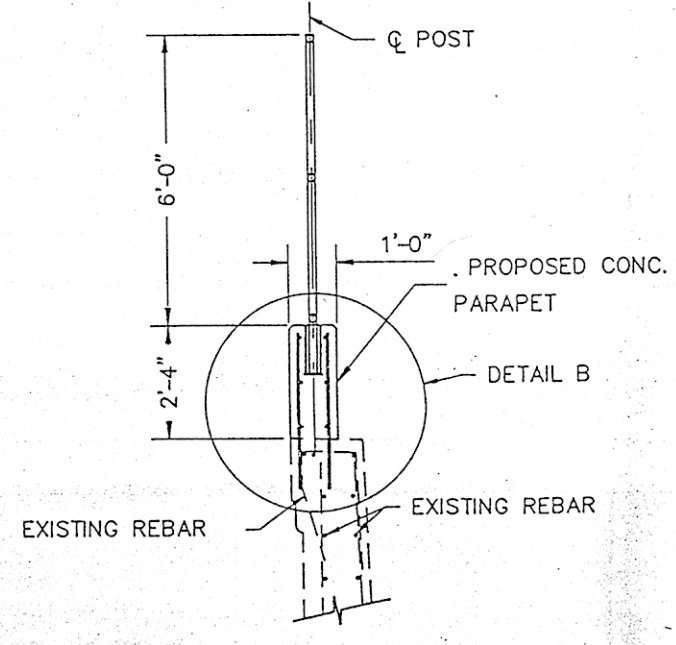
WEST 28th STREET PLAN  
SCALE:  $\frac{1}{8}'' = 1'-0''$  FACE OF WALL



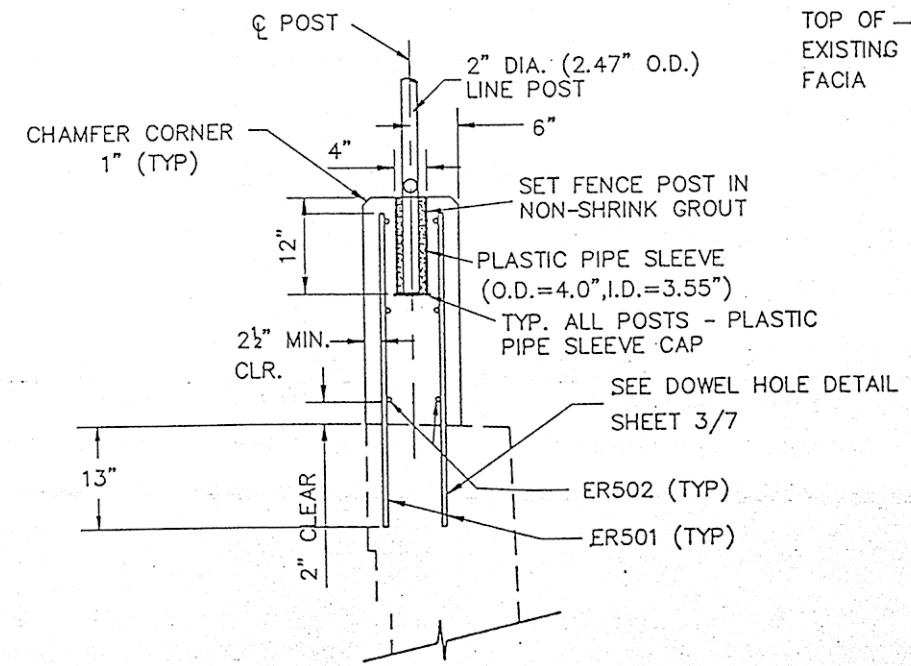
DETAIL A  
(SCALE:  $\frac{1}{2}'' = 1'$ )



SECTION 1-1 (ON BRIDGE)  
(SCALE:  $\frac{1}{2}'' = 1'$ )



SECTION 2-2 (ON SOUTH EAST & SOUTH WEST CORNER)  
(SCALE:  $\frac{1}{2}'' = 1'$ )

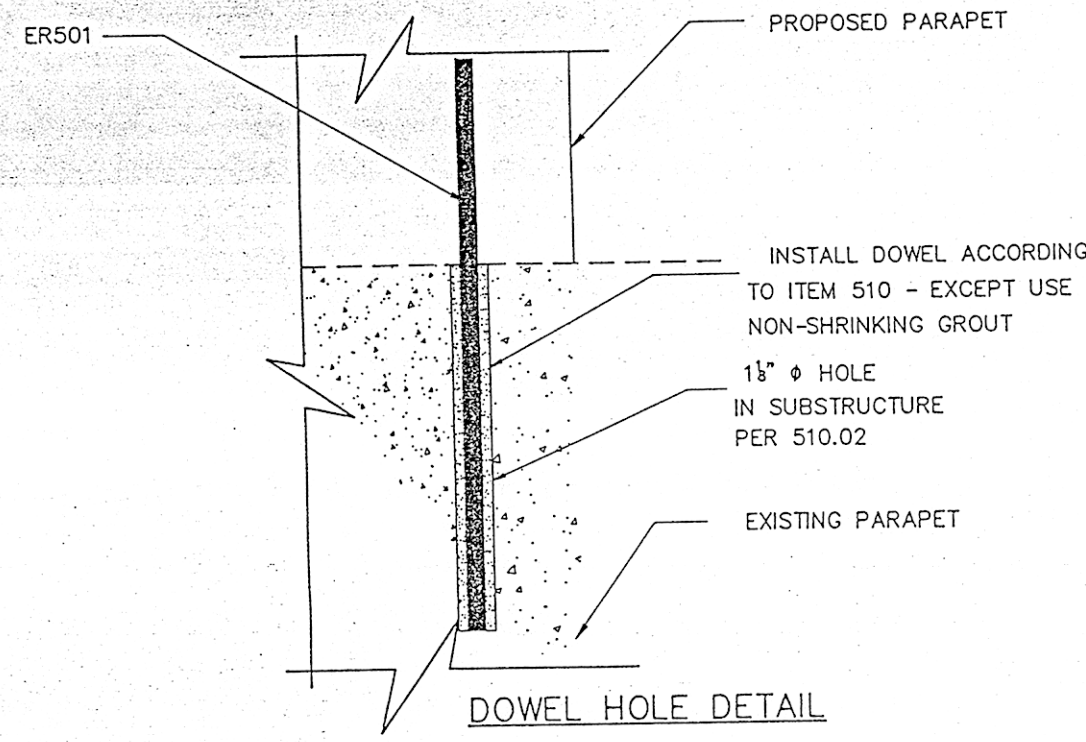


DETAIL B  
(SCALE:  $1'' = 1'$ ) (ON BRIDGE, SOUTHEAST & SOUTHWEST CORNERS)

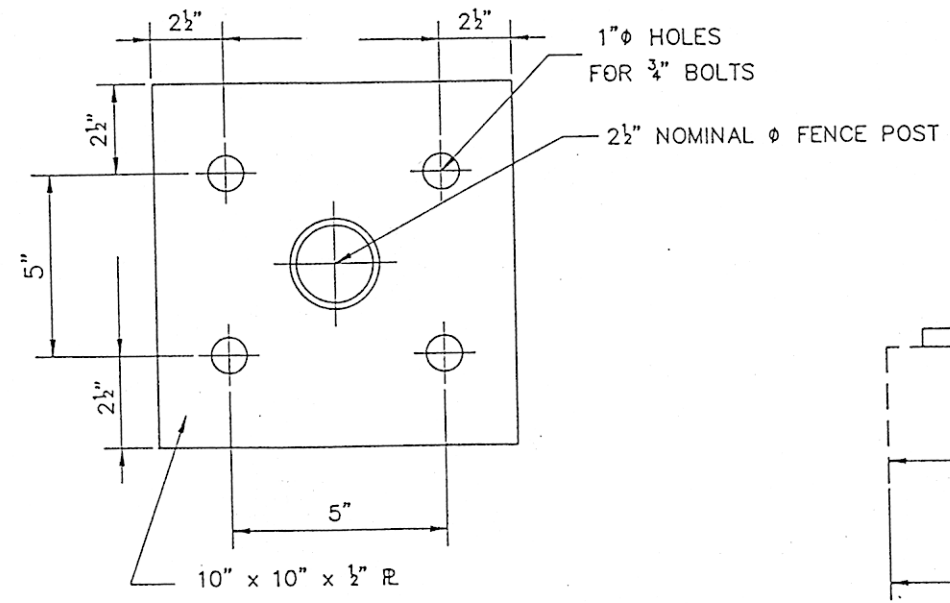
CUYAHOGA COUNTY ENGINEER CLEVELAND OHIO			
WEST 28th STREET CITY OF CLEVELAND BRIDGE OVER MAIN AVE. SUBWAY			
PARAPET DETAILS			
BRIDGE NO. 196	REPORT NO. 7185	DATE	
NO. B-136			2/7
DESIGN DMM/PTA	DRAWN DMM/PTA	CHECKED	REVISED TO AS BUILT



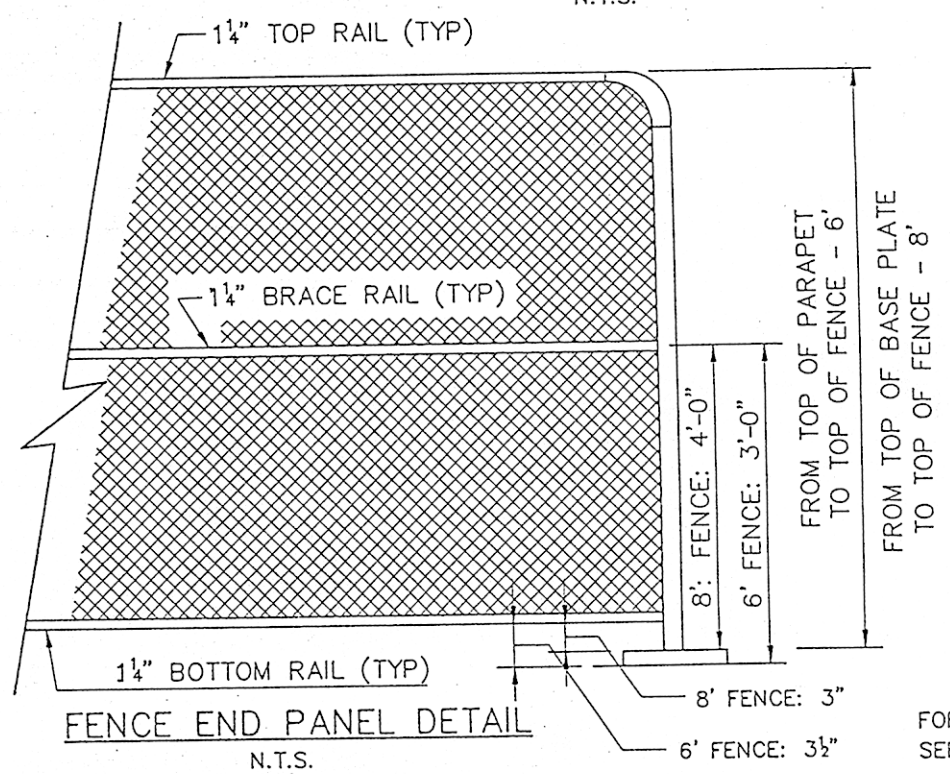
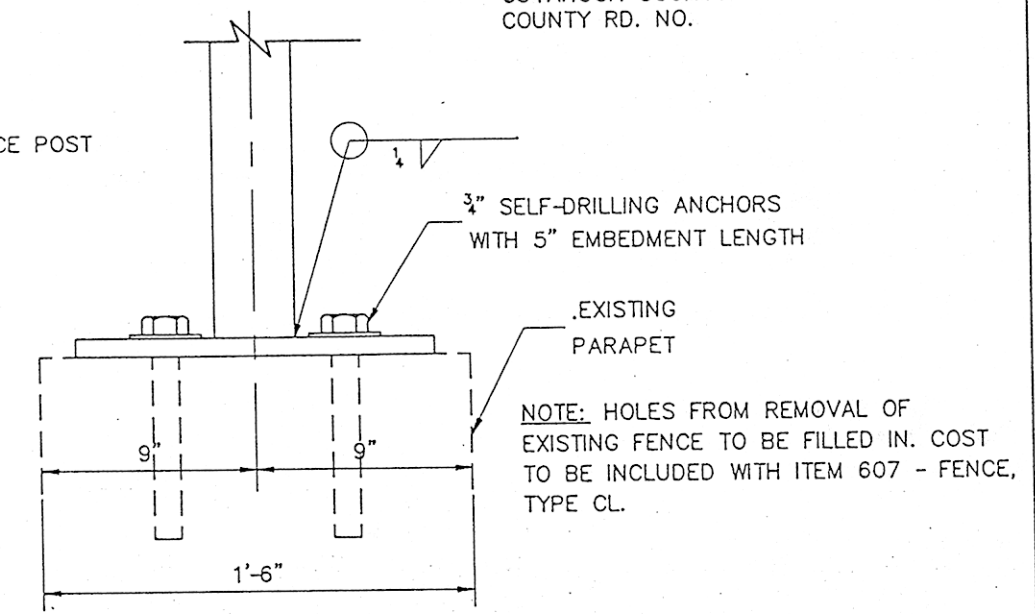
CUYAHOGA COUNTY  
COUNTY RD. NO.



**DOWEL HOLE DETAIL**  
N.T.S.



**FENCE POST BRACKET, 8' CL FENCE**  
SCALE: 3/8" = 1'-0"



**FENCE END PANEL DETAIL**  
N.T.S.

**FENCE, CHAIN LINK, AS PER PLAN**

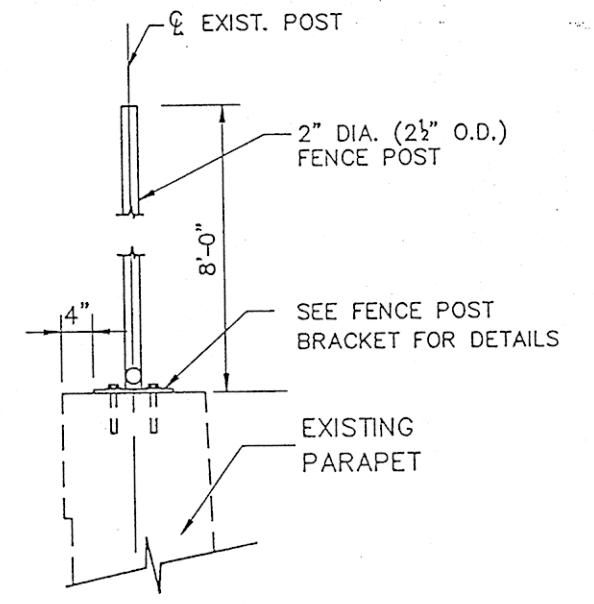
INCLUDED IN THIS ITEM IS THE FURNISHING OF ALL MATERIALS, LABOR, EQUIPMENT, AND INCIDENTALS NECESSARY TO COMPLETE THE FENCING. CHAIN LINK FENCE SHALL CONFORM TO THE CONSTRUCTION AND SPECIFICATION 710.03. FENCE POSTS AND RAILS SHALL BE OF NOMINAL PIPE DIAMETER, STANDARD WEIGHT AND WALL THICKNESS FOR SCHEDULE 40 ALUMINUM ALLOY PIPE, PER TABLE 710.3-2. CHAIN LINK FABRIC, STRETCHER BARS AND OTHER MISCELLANEOUS HARDWARE SHALL BE ALUMINUM ALLOY AS PER 710.03 AND SHALL COMPLY WITH INDUSTRY STANDARDS. TENSION BANDS SHALL BE A MINIMUM OF 12 GAUGE ALUMINUM BY 3/8 INCH WIDE ASSEMBLED WITH 5/8 INCH DIAMETER BY 1 1/4 INCH BOLTS. ONE TENSION BAND SHALL BE PROVIDED FOR EACH FOOT OF FABRIC HEIGHT. FIELD WELDING SHALL NOT BE PERMITTED.

ITEM 517 - RAILING, CONCRETE PARAPET WITH CHAIN LINK FENCE, PER LIN. FT.  
ITEM 607 - FENCE, TYPE CL, WITH 8' FABRIC WIDTH, PER LIN. FT.

FOR ADDITIONAL FENCE DETAILS,  
SEE STANDARD SHEET F-1, DATED 11-10-83

**FENCE REMOVAL**

THIS ITEM TO INCLUDE REMOVAL OF ALL 6' AND 8' CHAIN LINK FENCE ON BRIDGE AND PARAPET, AS PER PLAN. WORK TO INCLUDE REMOVING ALL BASE PLATES, BOLTS, ETC. PAYMENT IS INCLUDED AS LUMP SUM IN ITEM 202 - PORTION OF STRUCTURE REMOVED, FENCE, CL.



**SECTION 3-3**  
(SCALE: 1" = 1")  
(ON NORTH EAST & NORTH WEST CORNERS)

**ESTIMATED STRUCTURE QUANTITIES**

REF. NO.	ITEM	ITEM EXTEN.	ESTIMATED QUANTITIES	UNIT	DESCRIPTION
	202	11201	LUMP	SUM	PORTIONS OF STRUCTURE REMOVED - FENCE, TYPE CL, (INCLUDING BASE PLATES, BOLTS, ETC.)
	510	11101	338	EA	DOWEL HOLES
	517	75301	170	LF	RAILING, CONCRETE PARAPET WITH CHAIN LINK FENCE
	606	13001	35	LF	GUARDRAIL, TYPE 5A, AS PER PLAN
	606	13501	1	EA	BRIDGE TERMINAL ASSEMBLY, TYPE 2, AS PER PLAN
	606	26501	1	EA	BRIDGE TERMINAL ASSEMBLY, TYPE 1, AS PER PLAN
	607	20001	750	LF	FENCE, TYPE CL, WITH 8' FABRIC WIDTH (INCL. BASE PLATES, BOLTS, ETC.)

MARK	NO. REQ'D.	LENGTH	TYPE	DIMENSIONS				SERIES INCR.	WEIGHT LBS.
				A	B	C	D		
ALL PARAPET BARS ARE EPOXY COATED									
ER501	338	3'-3"	ST						1146
ER502	12	29'-6"	ST						370
ER503	12	32'-9"	ST						410
ER504	12	22'-6"	ST						282
TOTAL REINFORCING STEEL = 2208#									
NOTE: ALL REINFORCING STEEL, INCLUDED FOR PAYMENT IN ITEM 517, PER LIN. FT.									

BAR SIZE IS INDICATED IN THE BAR MARK, THE FIRST DIGIT WHERE THREE DIGITS ARE USED, AND THE FIRST TWO WHERE FOUR ARE USED, INDICATE THE BAR SIZE NUMBER. FOR EXAMPLE, A700 IS A NO. 7 SIZE BAR AND A1014 IS A NO. 10 SIZE BAR. BARS PREFIXED WITH 'E' ARE EPOXY COATED. FOR EXAMPLE, ER501.

CUYAHOGA COUNTY ENGINEER  
CLEVELAND OHIO

**WEST 28th STREET**  
CITY OF CLEVELAND  
BRIDGE OVER MAIN AVE. SUBWAY

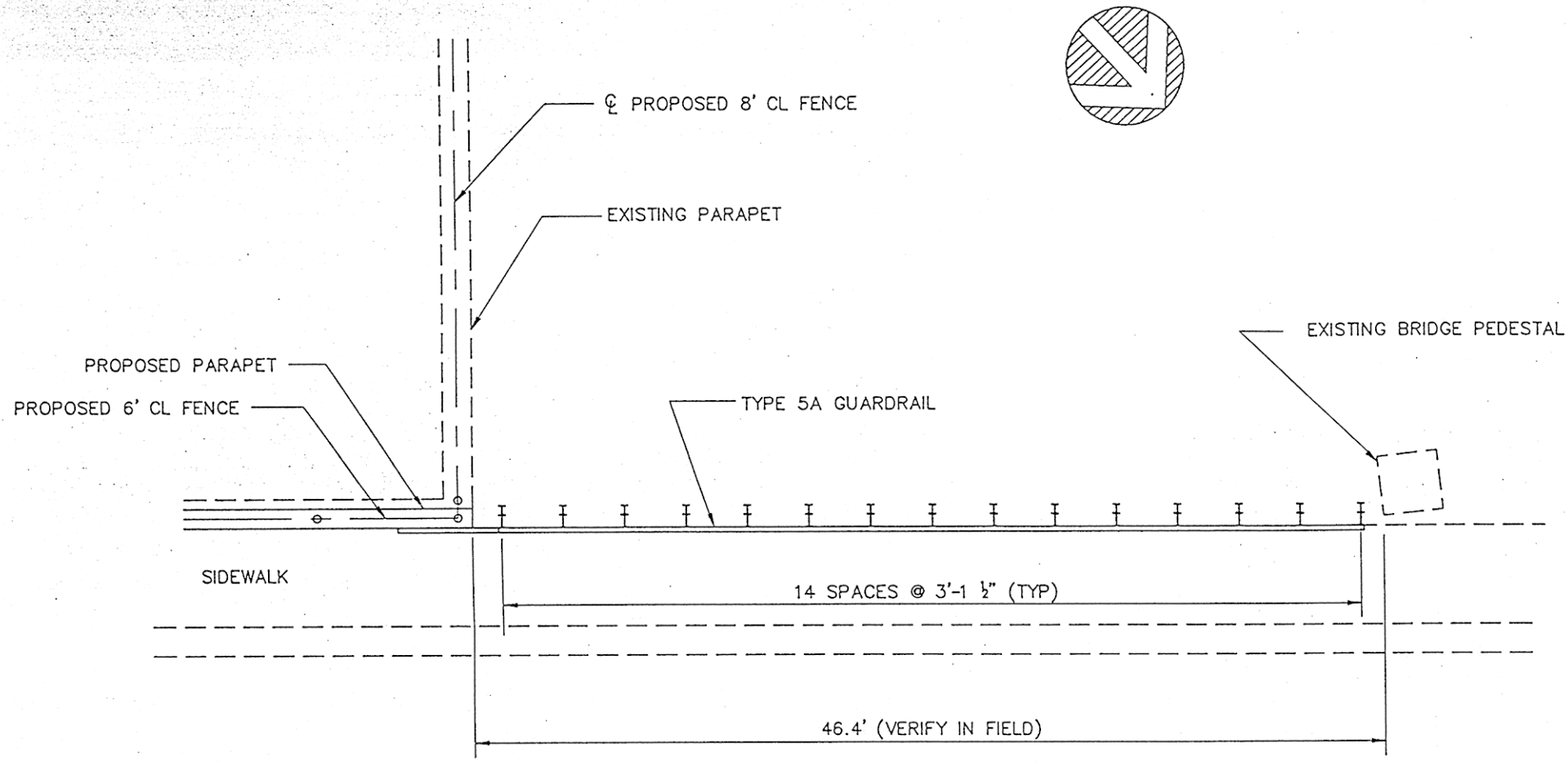
MISCELLANEOUS DETAILS  
ESTIMATED QUANTITIES

BRIDGE NO. 196 REPORT NO. 7185 DATE 8/22/91

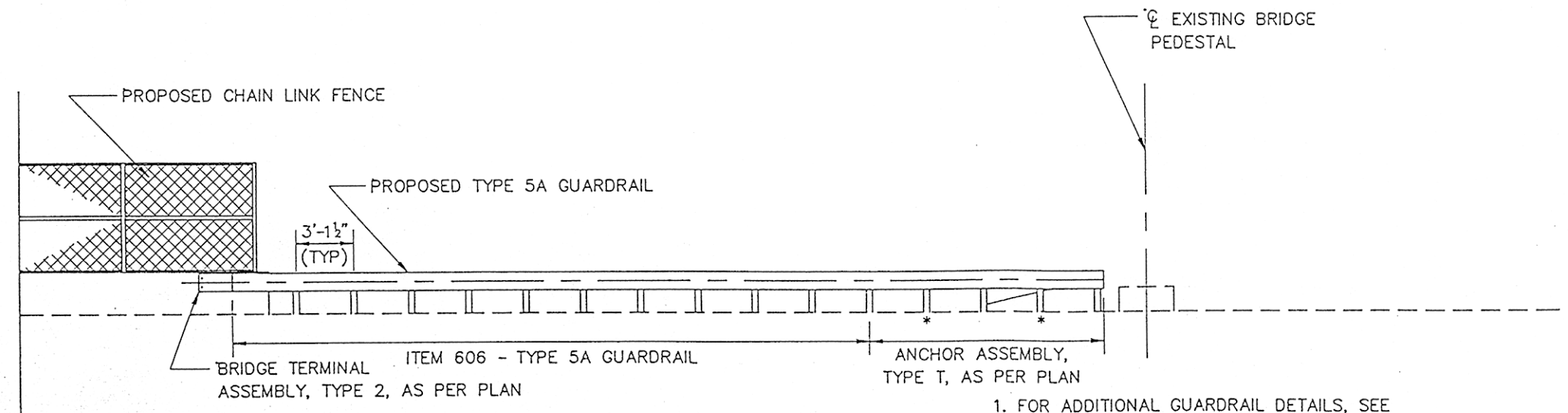
**NO. B-136**

DESIGN DMM/PTA DRAWN PTA CHECKED REVISED TO AS BUILT

W28-2.DWG 3/7



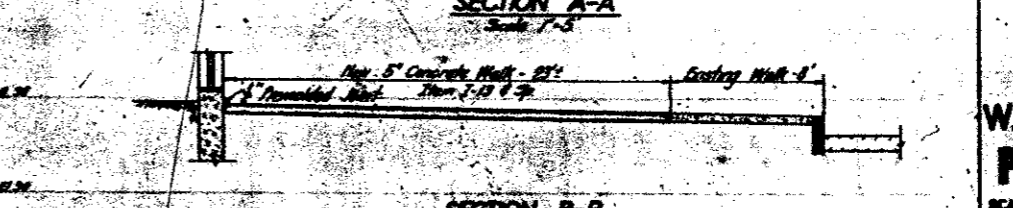
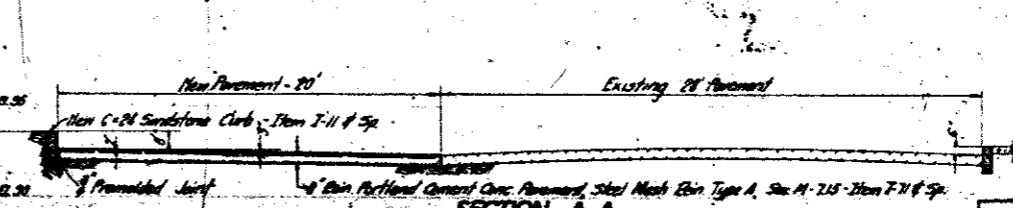
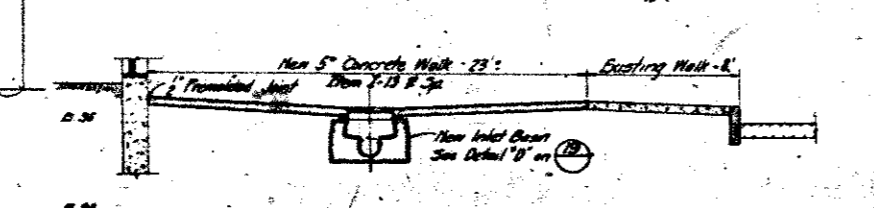
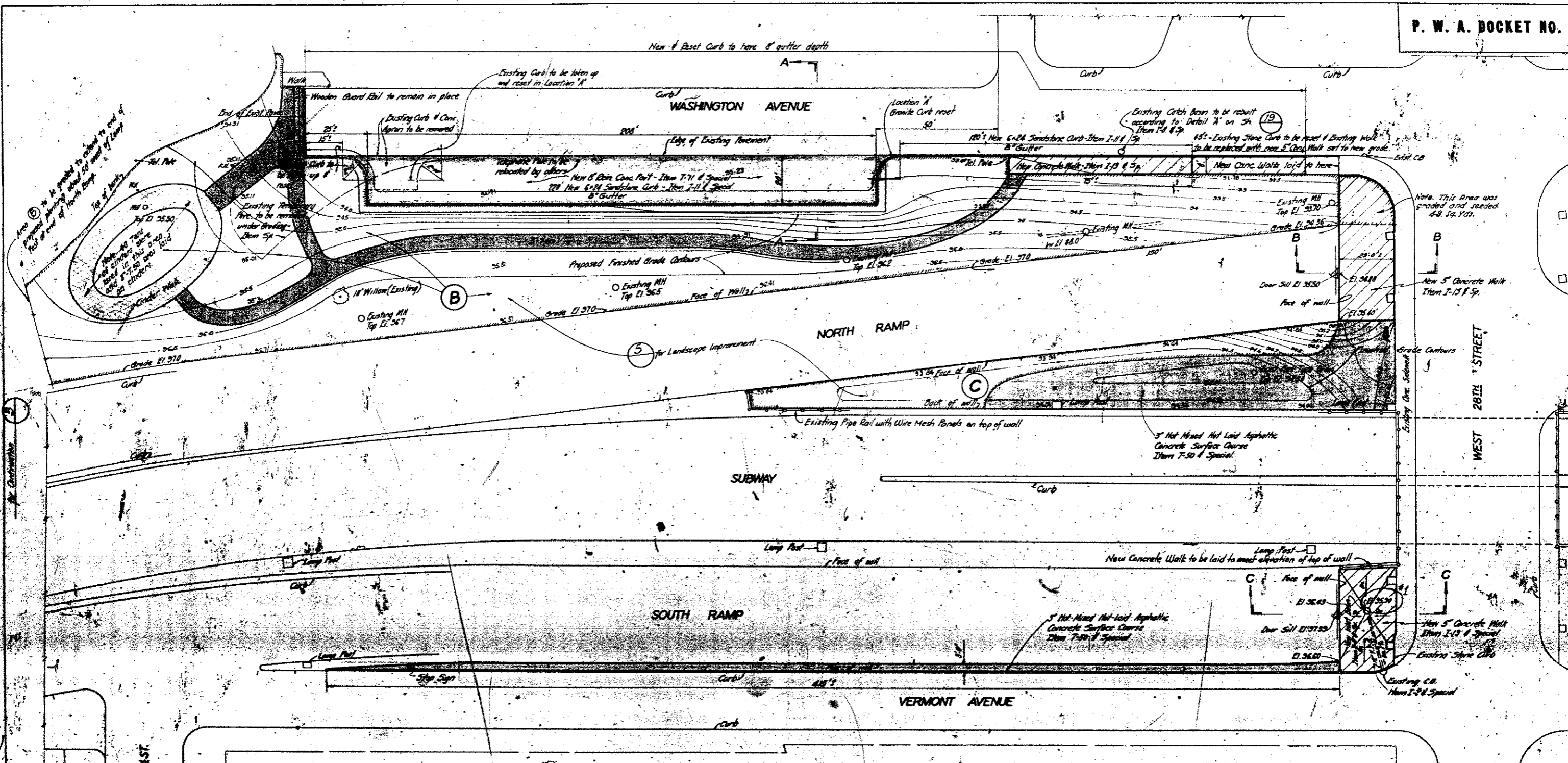
**TYPE 5A GUARDRAIL PLAN**  
SCALE: 1/4" = 1'-0"



**TYPE 5A GUARDRAIL ELEVATION**  
SCALE: 1/4" = 1'-0"

1. FOR ADDITIONAL GUARDRAIL DETAILS, SEE STANDARD SHEET GR-2.1, DATED 5-6-91.
2. SEE SHEET 5/7 FOR LOCATION OF TYPE 5A GUARDRAIL.
3. FOR ADDITIONAL BRIDGE TERMINAL ASSEMBLY DETAILS, SEE STANDARD SHEET GR-3.2, DATED 5/6/91.

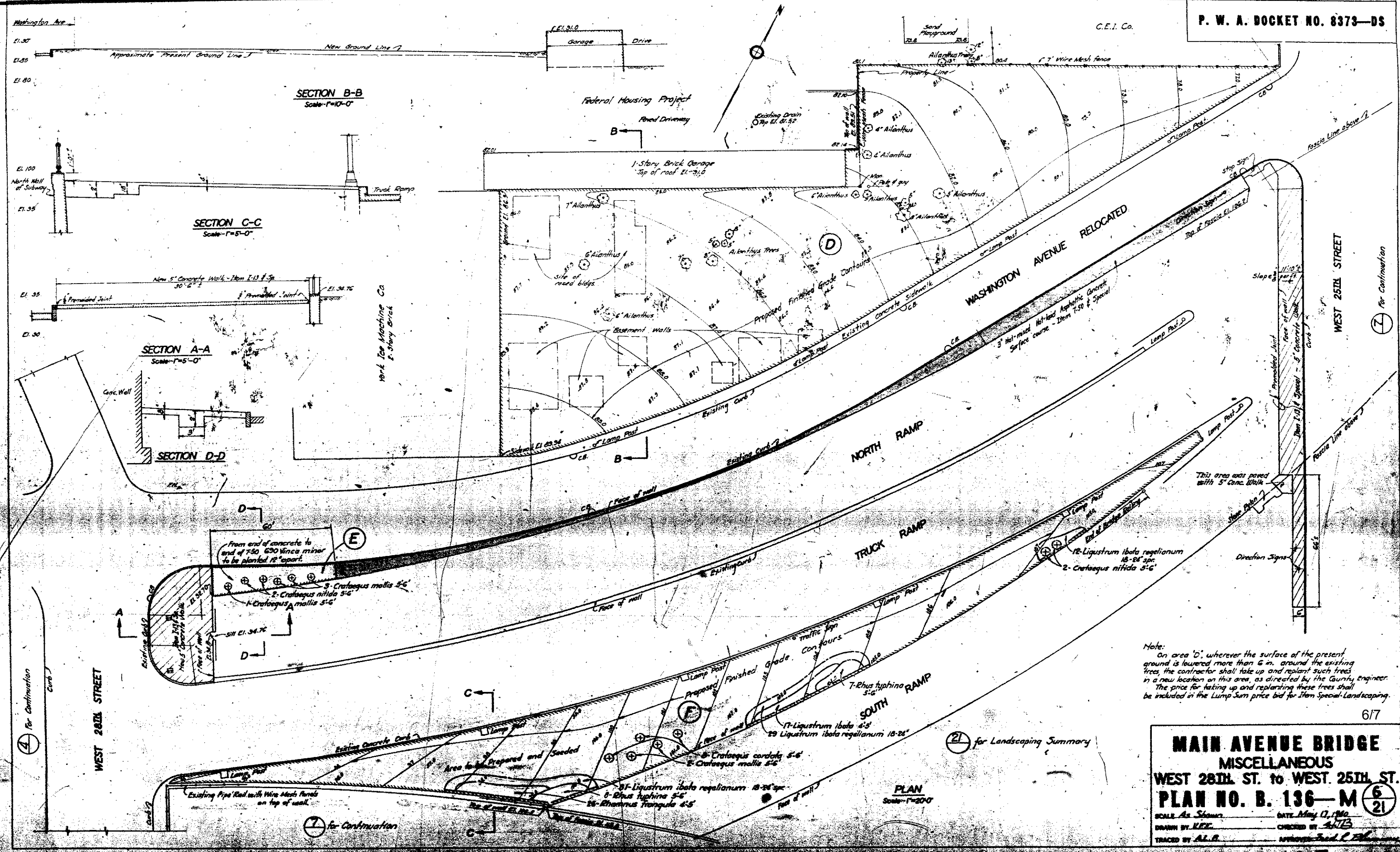
CUYAHOGA COUNTY ENGINEER CLEVELAND OHIO			
WEST 28th STREET CITY OF CLEVELAND BRIDGE OVER MAIN AVE. SUBWAY			
MISCELLANEOUS DETAILS GUARDRAIL			
BRIDGE NO. 196	REPORT NO. 7185	DATE	
NO. B-136			4 7
DESIGN PTA	DRAWN PTA	CHECKED	REVISED TO AS BUILT



**MAIN AVENUE BRIDGE**  
MISCELLANEOUS  
W. 29TH ST. to W. 28TH ST. - GENERAL  
**PLAN NO. B. 136-M**  $\frac{1}{21}$

SCALE As Shown DATE May 17, 1940  
DRAWN BY Y.C.E. CHECKED BY H.T.B.  
TRACED BY Y.C.E. APPROVED Fred P. Pl...

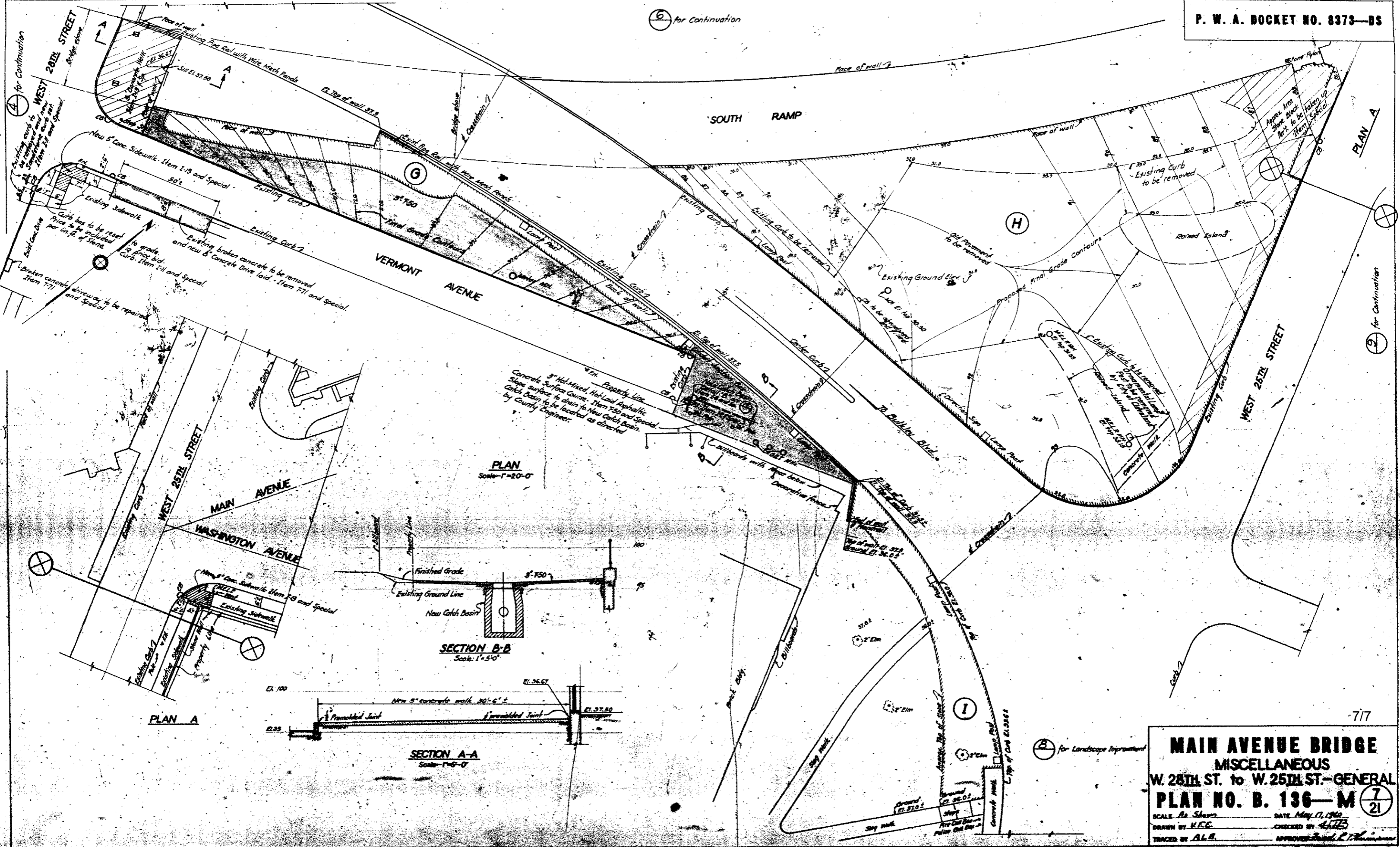




Note:  
 On area 'D', wherever the surface of the present ground is lowered more than 6 in. around the existing trees, the contractor shall take up and replant such trees in a new location on this area, as directed by the Gurney Engineer. The price for taking up and replanting these trees shall be included in the Lump Sum price bid for Item Special-Landscaping.

**MAIN AVENUE BRIDGE**  
 MISCELLANEOUS  
 WEST 28th ST. to WEST 25th ST.  
**PLAN NO. B. 136-M** (6/21)  
 SCALE As Shown DATE May 17, 1960  
 DRAWN BY KEE CHECKED BY AFB  
 TRACED BY A.L.S. APPROVED Fred L. Blum

6 for Continuation



**MAIN AVENUE BRIDGE**  
**MISCELLANEOUS**  
**W. 28TH ST. to W. 25TH ST. - GENERAL**  
**PLAN NO. B. 136-M** 7/21

SCALE As Shown DATE May 17, 1962  
 DRAWN BY N.E.C. CHECKED BY A.L.B.  
 TRACED BY A.L.B. APPROVED [Signature]