

I.R. 90 WESTBOUND I.R. 90 EASTBOUND

P.I. STA. 251+65.88
Delta = 6° 33' 24" (LT)
Dc = 1° 00' 00"
R = 5,729.58'
T = 328.20'
L = 655.68'
E = 9.39'
P.C. STA. 248+37.68
P.C.C. STA. 254+93.36
e_max = 0.027
V_95 = 60 MPH
WIDENING = N/A

P.I. STA. 262+85.88
Delta = 8° 38' 07" (RT)
Dc = 0° 32' 45"
R = 10,496.94'
T = 792.51'
L = 1,582.03'
E = 29.87'
P.C.C. STA. 254+93.36
C.S. STA. 270+75.39
e_max = NC
V_95 = 60 MPH
WIDENING = N/A

P.I. STA. 273+10.70
Ls = 375.00'
theta_s = 8° 31' 24"
LT = 235.31'
ST = 140.30'
x = 374.06'
y = 20.79'
k = 187.36'
p = 3.53'

P.I. STA. 281+54.63
Delta = 52° 21' 44" (RT)
Dc = 4° 00' 00"
R = 1,432.39'
T = 704.24'
L = 1,309.05'
E = 163.76'
S.C. STA. 274+50.39
C.S. STA. 287+59.44
e_max = 0.060
V_95 = 60 MPH
WIDENING = 1' /LANE

P.I. STA. 288+84.65
Ls = 375.00'
theta_s = 7° 30' 00"
LT = 250.22'
ST = 125.20'
x = 374.36'
y = 16.34'
k = 187.39'
p = 4.09'

P.I. STA. 297+93.48
Delta = 1° 02' 30" (LT)
Dc = 0° 30' 00"
R = 11,459.16'
T = 104.17'
L = 208.33'
E = 0.47'
P.C. STA. 296+89.32
P.T. STA. 298+97.64
e_max = NC
V_95 = 60 MPH
WIDENING = N/A

RAMP D1

P.I. STA. 1301+23.91
Delta = 1° 14' 20" (RT)
Dc = 0° 30' 00"
R = 11,459.16'
T = 123.91'
L = 247.80'
E = 0.67'
P.C. STA. 1300+00.00
P.T. STA. 1302+47.80
e_max = NC
V_95 = 60 MPH
WIDENING = N/A

P.I. STA. 1309+83.51
Delta = 5° 10' 41" (LT)
Dc = 0° 40' 00"
R = 8,594.37'
T = 388.63'
L = 776.73'
E = 8.78'
P.C. STA. 1305+94.88
P.T. STA. 1313+71.61
e_max = NC
V_95 = 50 MPH
WIDENING = N/A

RAMP D2

P.I. STA. 1508+49.77
Delta = 163° 12' 40" (RT)
Dc = 7° 44' 08"
R = 81.00'
T = 548.90'
L = 230.73'
E = 473.84'
P.C. STA. 1503+00.87
P.T. STA. 1505+31.60
e_max = 0.060
V_95 = 20 MPH
WIDENING = N/A

P.I. STA. 559+24.91
Delta = 5° 18' 47" (RT)
Dc = 0° 47' 00"
R = 7,314.35'
T = 339.37'
L = 678.26'
E = 7.87'
P.C. STA. 555+85.54
P.T. STA. 562+63.80
e_max = NC
V_95 = 50 MPH
WIDENING = N/A

RAMP D3

P.I. STA. 401+90.45
Delta = 10° 10' 53" (LT)
Dc = 0° 32' 41"
R = 10,520.94'
T = 200.30'
L = 400.55'
E = 1.91'
P.R.C. STA. 399+90.15
P.R.C. STA. 403+90.70
e_max = NC
V_95 = 60 MPH
WIDENING = N/A

P.I. STA. 406+78.18
Delta = 18° 31' 23" (RT)
Dc = 3° 15' 00"
R = 1,762.95'
T = 287.48'
L = 569.94'
E = 23.29'

P.R.C. STA. 403+90.70
P.T. STA. 409+60.64
e_max = 0.047
V_95 = 50 MPH
WIDENING = N/A

P.I. STA. 287+07.31
Ls = 375.00'
theta_s = 7° 39' 23"
LT = 250.23'
ST = 125.21'
x = 374.33'
y = 16.68'
k = 187.39'
p = 4.17'

STATE ROUTE 2

P.I. STA. 59+27.81
Delta = 11° 58' 15" (RT)
Dc = 2° 00' 00"
R = 2,864.79'
T = 300.36'
L = 598.54'
E = 15.70'
P.C. STA. 56+27.45
P.T. STA. 62+25.99
e_max = NC
V_95 = 60 MPH
WIDENING = N/A

STATE ROUTE 2 (CONTINUED)

P.I. STA. 81+39.98
Delta = 3° 05' 35" (LT)
Dc = 0° 39' 00"
R = 8,814.74'
T = 237.99'
L = 475.87'
E = 3.21'
P.C. STA. 79+01.99
P.T. STA. 83+77.86
e_max = NC
V_95 = 55 MPH
WIDENING = N/A

P.I. STA. 502+04.65
Delta = 46° 39' 16" (LT)
Dc = 9° 00' 00"
R = 954.93'
T = 204.65'
L = 403.20'
E = 21.68'
P.C. STA. 500+00.00
C.S. STA. 504+03.20
e_max = 0.059
V_95 = 50 MPH
WIDENING = 2' /LANE

RAMP E1

P.I. STA. 505+29.84
Ls = 200.00'
theta_s = 38° 30' 00"
LT = 126.65'
ST = 80.48'
x = 189.64'
y = 50.10'
k = 98.51'
p = 7.63'

P.I. STA. 514+02.48
Delta = 155° 07' 24" (RT)
Dc = 32° 30' 00"
R = 176.29'
T = 799.28'
L = 477.30'
E = 642.20'

P.I. STA. 513+80.03
Delta = 0° 34' 41" (RT)
Dc = 3° 49' 12"
R = 1499.89'
T = 7.57'
L = 15.14'
E = 0.02'
P.C. STA. 513+72.46
P.T. STA. 513+87.60
e_max = 0.056
V_95 = 55 MPH
WIDENING = N/A

P.I. STA. 605+49.05
Delta = 8° 22' 22" (RT)
Dc = 1° 30' 00"
R = 3,819.72'
T = 279.59'
L = 558.19'
E = 10.22'
P.C. STA. 602+81.08
P.T. STA. 607+88.35
e_max = 0.060
V_95 = 45 MPH
WIDENING = 2' /LANE

RAMP E2

P.I. STA. 612+37.66
Delta = 31° 00' 31" (RT)
Dc = 9° 00' 00"
R = 636.62'
Delta = 31° 00' 31" (RT)
Dc = 9° 00' 00"
R = 636.62'
LT = 126.65'
ST = 80.48'
x = 189.64'
y = 50.10'
k = 98.51'
p = 7.63'

P.I. STA. 614+05.60
Delta = 155° 07' 24" (RT)
Dc = 32° 30' 00"
R = 176.29'
T = 799.28'
L = 477.30'
E = 642.20'

P.I. STA. 614+05.60
Delta = 155° 07' 24" (RT)
Dc = 32° 30' 00"
R = 176.29'
T = 799.28'
L = 477.30'
E = 642.20'

P.I. STA. 402+79.59
Delta = 8° 22' 22" (RT)
Dc = 1° 30' 00"
R = 3,819.72'
T = 279.59'
L = 558.19'
E = 10.22'
P.C. STA. 400+00.00
P.T. STA. 405+58.19
e_max = 0.028
V_95 = 50 MPH
WIDENING = N/A

RAMP F3 CONTINUED

P.I. STA. 421+17.73
Delta = 27° 54' 40" (RT)
Dc = 6° 45' 00"
R = 848.83'
T = 210.94'
L = 413.50'
E = 25.82'
S.C. STA. 419+06.79
C.S. STA. 423+20.29
e_max = 0.060
V_95 = 50 MPH
WIDENING = 1.875' /LANE

P.I. STA. 411+30.51
Delta = 18° 55' 40" (LT)
Dc = 6° 00' 00"
R = 954.93'
T = 159.18'
L = 315.46'
E = 13.18'

P.I. STA. 413+93.74
Ls = 320.00'
theta_s = 9° 36' 00"
LT = 213.65'
ST = 106.95'
x = 319.10'
y = 17.84'
k = 159.85'
p = 4.46'

P.I. STA. 421+17.73
Delta = 27° 54' 40" (RT)
Dc = 6° 45' 00"
R = 848.83'
T = 210.94'
L = 413.50'
E = 25.82'
S.C. STA. 419+06.79
C.S. STA. 423+20.29
e_max = 0.060
V_95 = 50 MPH
WIDENING = 1.875' /LANE

RAMP F3 CONTINUED

P.I. STA. 421+17.73
Delta = 27° 54' 40" (RT)
Dc = 6° 45' 00"
R = 848.83'
T = 210.94'
L = 413.50'
E = 25.82'
S.C. STA. 419+06.79
C.S. STA. 423+20.29
e_max = 0.060
V_95 = 50 MPH
WIDENING = 1.875' /LANE

P.I. STA. 411+30.51
Delta = 18° 55' 40" (LT)
Dc = 6° 00' 00"
R = 954.93'
T = 159.18'
L = 315.46'
E = 13.18'

P.I. STA. 413+93.74
Ls = 320.00'
theta_s = 9° 36' 00"
LT = 213.65'
ST = 106.95'
x = 319.10'
y = 17.84'
k = 159.85'
p = 4.46'

P.I. STA. 711+93.56
Ls = 200.00'
theta_s = 21° 15' 00"
LT = 122.67'
ST = 79.46'
x = 196.73'
y = 28.80'
k = 99.54'
p = 3.99'

RAMP F4

P.I. STA. 424+20.59
Ls = 300.00'
theta_s = 10° 07' 30"
LT = 200.33'
ST = 116.06'
C.S. STA. 418+07.12
P.C. STA. 424+20.59
e_max = 0.060
V_95 = 45 MPH
WIDENING = N/A

P.I. STA. 418+07.12
Ls = 300.00'
theta_s = 10° 07' 30"
LT = 200.33'
ST = 116.06'
C.S. STA. 418+07.12
P.C. STA. 424+20.59
e_max = 0.060
V_95 = 45 MPH
WIDENING = N/A

P.I. STA. 418+07.12
Ls = 300.00'
theta_s = 10° 07' 30"
LT = 200.33'
ST = 116.06'
C.S. STA. 418+07.12
P.C. STA. 424+20.59
e_max = 0.060
V_95 = 45 MPH
WIDENING = N/A

P.I. STA. 804+98.62
Delta = 11° 21' 51" (RT)
Dc = 2° 45' 00"
R = 2,083.48'
T = 207.30'
L = 413.24'
E = 10.24'
P.C.C. STA. 802+91.32
P.T. STA. 807+04.56
e_max = 0.032
V_95 = 40 MPH
WIDENING = N/A

RAMP G5

P.I. STA. 715+59.77
Delta = 18° 16' 07" (LT)
Dc = 3° 45' 00"
R = 1,527.89'
T = 245.67'
L = 487.16'
E = 19.62'

P.I. STA. 715+20.47
Delta = 151° 04' 52" (LT)
Dc = 17° 30' 00"
R = 327.40'
T = 1,269.69'
L = 863.32'
E = 983.82'

P.I. STA. 801+49.40
Delta = 31° 19' 01" (RT)
Dc = 10° 45' 00"
R = 532.98'
T = 149.40'
L = 291.32'
E = 20.54'

P.I. STA. 903+10.93
Delta = 42° 03' 54" (RT)
Dc = 45° 50' 12"
R = 125.00'
T = 48.06'
L = 91.77'
E = 8.92'
P.C. STA. 902+62.87
C.S. STA. 903+54.64
e_max = 0.055
V_95 = 20 MPH
WIDENING = N/A

RAMP G6

P.I. STA. 811+83.78
Delta = 35° 54' 53" (LT)
Dc = 16° 00' 00"
R = 358.10'
T = 116.06'
S.C. STA. 811+83.78
P.C. STA. 810+67.72
P.T. STA. 812+92.19
e_max = 0.060
V_95 = 35 MPH
WIDENING = N/A

P.I. STA. 901+97.23
Delta = 90° 01' 06" (RT)
Dc = 49° 49' 21"
R = 115.00'
T = 115.04'
L = 180.68'
E = 47.66'

P.I. STA. 801+49.40
Delta = 31° 19' 01" (RT)
Dc = 10° 45' 00"
R = 532.98'
T = 149.40'
L = 291.32'
E = 20.54'

P.I. STA. 38+08.28
Delta = 64° 54' 30" (LT)
Dc = 6° 15' 00"
R = 916.73'
T = 582.99'
L = 1,038.53'
E = 169.67'
P.C. STA. 32+25.29
P.T. STA. 42+63.82
e_max = NC
V_95 = 40 MPH
WIDENING = 1.313' /LANE

NORTH MARGINAL CONTINUED

P.I. STA. 47+73.74
Delta = 38° 23' 37" (RT)
Dc = 5° 20' 00"
R = 1,074.30'
T = 374.04'
L = 719.88'
E = 63.25'

P.I. STA. 56+24.63
Delta = 9° 25' 44" (LT)
Dc = 1° 30' 00"
R = 1,091.35'
T = 315.00'
L = 3,819.72'
E = 12.97'

P.I. STA. 19+08.28
Delta = 17° 28' 27" (RT)
Dc = 4° 00' 00"
R = 1,432.39'
T = 220.14'
L = 436.85'
E = 16.82'

P.I. STA. 19+39.81
Delta = 7° 38' 04" (LT)
Dc = 11° 00' 00"
R = 520.87'
T = 34.75'
L = 69.40'
E = 1.16'
P.C. STA. 19+05.05
P.T. STA. 19+74.46
e_max = NC
V_95 = 30 MPH

AIRPORT ACCESS ROAD

P.I. STA. 26+82.75
Delta = 64° 54' 30" (LT)
Dc = 6° 30' 00"
R = 881.47'
T = 560.57'
L = 998.59'
E = 163.15'
P.C. STA. 21+22.18
P.T. STA. 31+20.77
e_max = NC
V_95 = 30 MPH

P.I. STA. 36+33.78
Delta = 38° 23' 37" (RT)
Dc = 5° 15' 00"
R = 1,091.35'
T = 379.98'
L = 731.31'
E = 64.26'

P.I. STA. 19+08.28
Delta = 17° 28' 27" (RT)
Dc = 4° 00' 00"
R = 1,432.39'
T = 220.14'
L = 436.85'
E = 16.82'

CLEVELAND INNERBELT PLAN OHIO DEPARTMENT OF TRANSPORTATION
CONTRACT GROUP 4
PLAN SHEET 2
APRIL 1, 2010
DRAFT

AIRPORT ACCESS ROAD CONTINUED
SOUTH MARGINAL CONTINUED
MUNICIPAL LOT ROADWAY

P.I. STA. 45+05.08
Delta = 12° 49' 03" (LT)
Dc = 2° 00' 00"
R = 2,864.79'
T = 321.78'
L = 640.88'
E = 18.01'

P.I. STA. 34+27.01
Delta = 45° 29' 48" (LT)
Dc = 9° 00' 00"
R = 1,091.35'
T = 315.00'
L = 3,819.72'
E = 12.97'

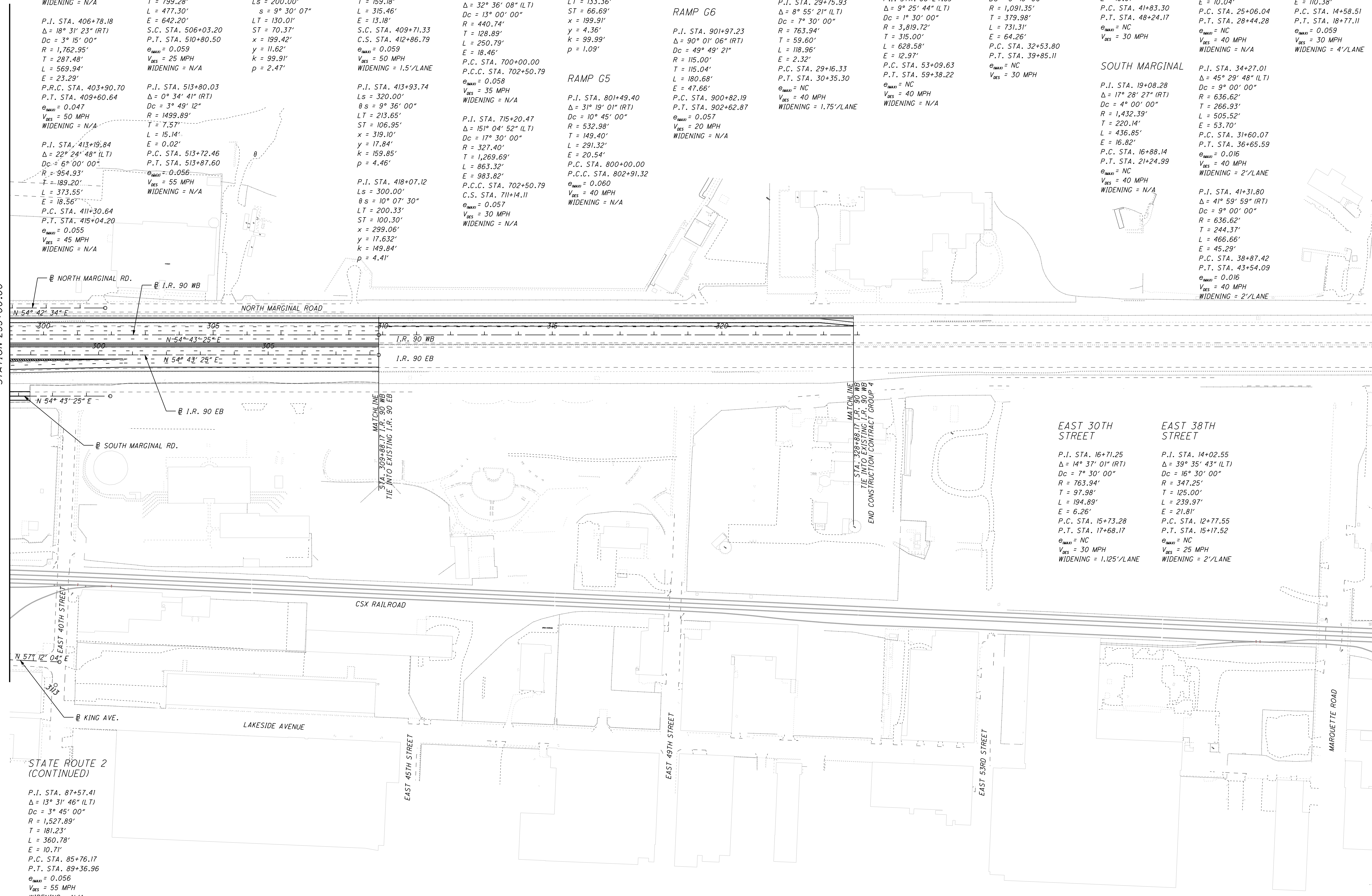
P.I. STA. 19+08.28
Delta = 17° 28' 27" (RT)
Dc = 4° 00' 00"
R = 1,432.39'
T = 220.14'
L = 436.85'
E = 16.82'

EAST 30TH STREET
P.I. STA. 16+71.25
Delta = 14° 37' 01" (RT)
Dc = 7° 30' 00"
R = 763.94'
T = 97.98'
L = 194.89'
E = 21.81'

EAST 38TH STREET
P.I. STA. 14+02.55
Delta = 39° 35' 43" (LT)
Dc = 16° 30' 00"
R = 347.25'
T = 125.00'
L = 239.97'
E = 21.81'

EAST 45TH STREET
P.I. STA. 87+57.41
Delta = 13° 31' 46" (LT)
Dc = 3° 45' 00"
R = 1,527.89'
T = 181.23'
L = 360.78'
E = 10.71'

MATCHLINE I.R. 90 WB STATION 299+00.00



STATE ROUTE 2 (CONTINUED)

P.I. STA. 87+57.41
Delta = 13° 31' 46" (LT)
Dc = 3° 45' 00"
R = 1,527.89'
T = 181.23'
L = 360.78'
E = 10.71'

MATCHLINE
STA. 309+88.17 I.R. 90 WB
TIE INTO EXISTING I.R. 90 WB
END CONSTRUCTION CONTRACT GROUP 4