



## Defect Listing

<b>Pipe Segment Reference</b> CSO099A0010A-CSO099A0010	<b>City</b> CLEVELAND	<b>Street</b> E 38TH ST	<b>Material</b> Reinforced Concrete Pipe		<b>Location Code</b> <small>Local road streets with light traffic, town and city back.</small>	<b>Sewer Use</b> Combined Pipe
<b>Upstream MH</b> CSO099A0010A	Total Length 89.9	Year Laid	<b>Shape</b> Circular		Location Details E 38TH	
<b>Downstream MH</b> CSO099A0010	Length surveyed 89.9	Year Renewed	<b>Height</b> 36	<b>Width</b>	Pipe Joint Length	

SPR	20	MPR	0	PO Number	<b>Customer</b> HDR
SPRI	2	MPRI	0	Work Order	<b>Purpose</b> Routine Assessment
QSR	2A00	QMR	0000		
OPR	20	<b>Surveyed By</b> Shawn_Dunnell	<b>Direction</b> Downstream	<b>Date</b> 11/01/2022	Media label
OPRI	2	<b>Certificate Number</b> 07001437	<b>Pre-Cleaning</b> Light Cleaning	<b>Time</b> 08:43	<b>Weather</b> Light Rain
		Date Cleaned		<b>End Time</b> 09:23	Additional Info

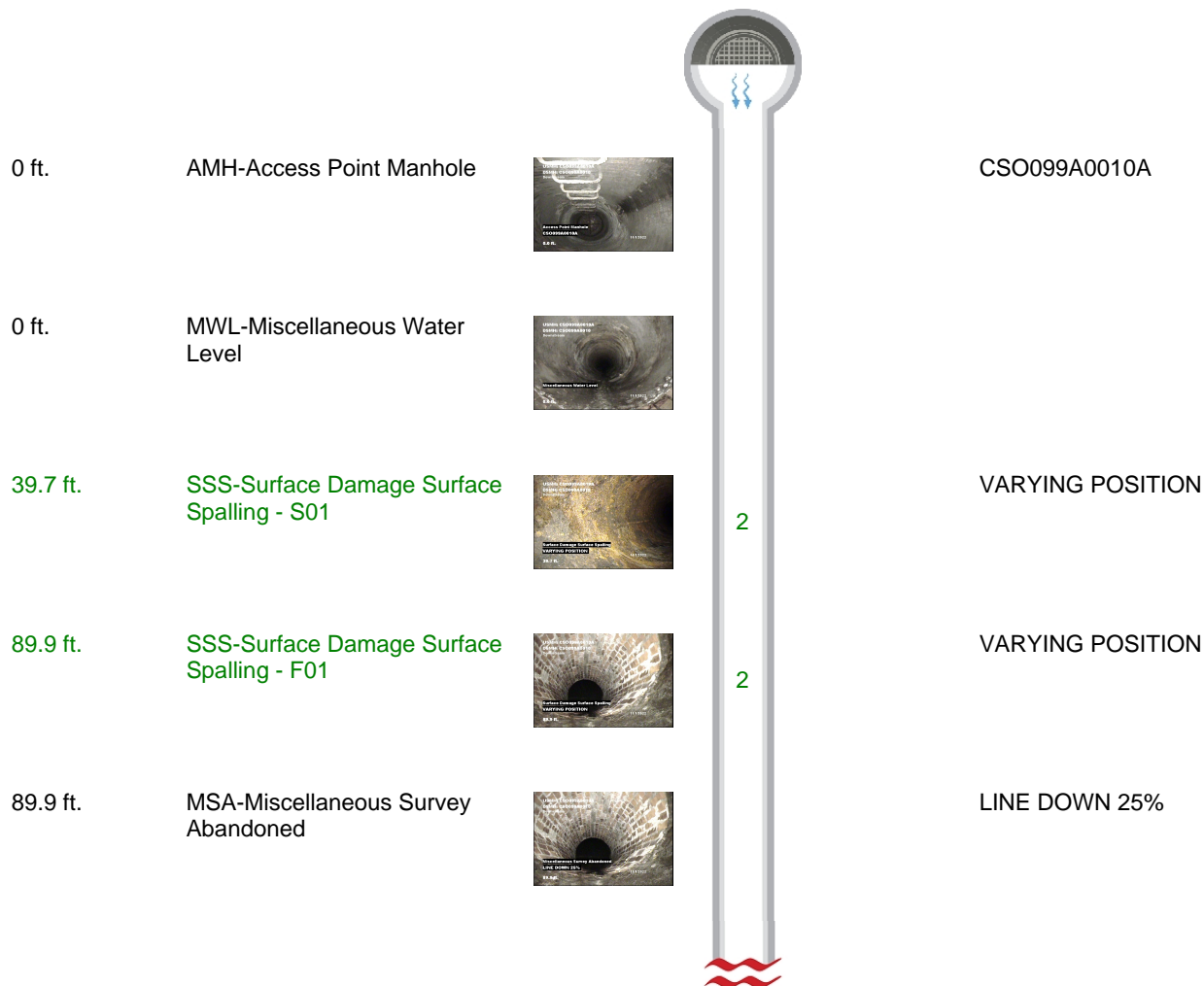
Distance	Condition	Cont. Dfct.	Values			Joint	Clock Position		Grade
			1st	2nd	%		At/From	To	
0	AMH-Access Point Manhole					<input type="checkbox"/>			
<b>Remarks:</b> CSO099A0010A									
0	MWL-Miscellaneous Water Level				5	<input type="checkbox"/>			
39.7	SSS-Surface Damage Surface Spalling	S01				<input type="checkbox"/>	8	4	2
<b>Remarks:</b> VARYING POSITION									
89.9	SSS-Surface Damage Surface Spalling	F01				<input type="checkbox"/>	8	4	2
<b>Remarks:</b> VARYING POSITION									
89.9	MSA-Miscellaneous Survey Abandoned					<input type="checkbox"/>			
<b>Remarks:</b> LINE DOWN 25%									



## Defect Listing Plot

<b>Pipe Segment Reference</b> CSO099A0010A-CSO099A0010	<b>City</b> CLEVELAND	<b>Street</b> E 38TH ST	<b>Material</b> Reinforced Concrete Pipe		<b>Location Code</b> <small>Local road streets with light traffic, town and city back</small>	<b>Sewer Use</b> Combined Pipe
<b>Upstream MH</b> CSO099A0010A	Total Length <b>89.9</b>	Year Laid	<b>Shape</b> Circular		Location Details <b>E 38TH</b>	
<b>Downstream MH</b> CSO099A0010	Length surveyed <b>89.9</b>	Year Renewed	<b>Height</b> 36	<b>Width</b>	Pipe Joint Length	

SPR	<b>20</b>	MPR	<b>0</b>	PO Number	<b>Customer</b> HDR
SPRI	<b>2</b>	MPRI	<b>0</b>	Work Order	<b>Purpose</b> Routine Assessment
QSR	<b>2A00</b>	QMR	<b>0000</b>		
OPR	<b>20</b>	<b>Surveyed By</b> Shawn_Dunnell	<b>Direction</b> Downstream	<b>Date</b> 11/01/2022	Media label
OPRI	<b>2</b>	<b>Certificate Number</b> 07001437	<b>Pre-Cleaning</b> Light Cleaning	<b>Time</b> 08:43	<b>Weather</b> Light Rain
		Date Cleaned		<b>End Time</b> 09:23	Additional Info





### 4 Image Report

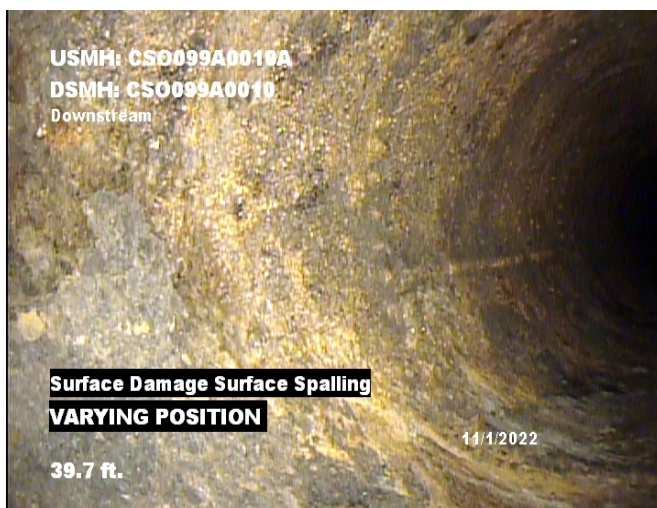
Pipe Segment Reference	City	Street	Material	Location Code	Sewer Use
CSO099A0010A-CSO099A0010	CLEVELAND	E 38TH ST	Reinforced Concrete Pipe	Local road areas with light traffic, town and city back	Combined Pipe
Upstream MH CSO099A0010A	Total Length 89.9	Year Laid	Shape Circular	Location Details E 38TH	
Downstream MH CSO099A0010	Length surveyed 89.9	Year Renewed	Height 36	Width	Pipe Joint Length



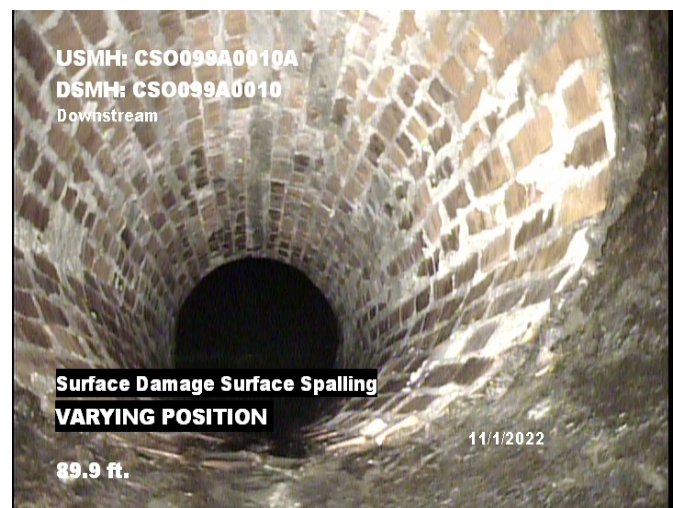
Distance: 0.0 ft.      Grade: 0  
 Condition: AMH-Access Point Manhole  
 Remarks: CSO099A0010A



Distance: 0.0 ft.      Grade: 0  
 Condition: MWL-Miscellaneous Water Level  
 Remarks: N/A



Distance: 39.7 ft.      Grade: 2  
 Condition: SSS-Surface Damage Surface Spalling  
 Remarks: VARYING POSITION

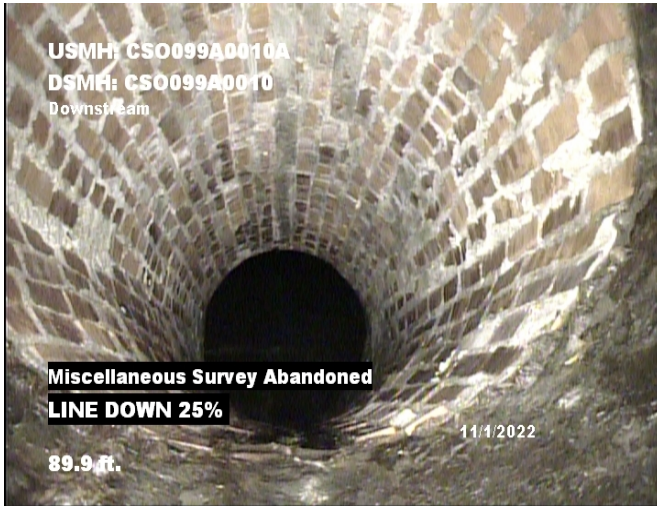


Distance: 89.9 ft.      Grade: 2  
 Condition: SSS-Surface Damage Surface Spalling  
 Remarks: VARYING POSITION



### 4 Image Report

Pipe Segment Reference	City	Street	Material	Location Code	Sewer Use
CSO099A0010A-CSO099A0010	CLEVELAND	E 38TH ST	Reinforced Concrete Pipe	Local road areas with light traffic, town and city back	Combined Pipe
Upstream MH CSO099A0010A	Total Length 89.9	Year Laid	Shape Circular	Location Details E 38TH	
Downstream MH CSO099A0010	Length surveyed 89.9	Year Renewed	Height 36	Width	Pipe Joint Length



Distance:	89.9 ft.	Grade:	0
Condition:	MSA-Miscellaneous Survey Abandoned		
Remarks:	LINE DOWN 25%		