



Defect Listing

Pipe Segment Reference CSO200A0003-CSO200A0000	City CLEVELAND	Street MARGINAL	Material Corrugated Metal Pipe		Location Code Airport	Sewer Use Combined Pipe
Upstream MH CSO200A0003	Total Length 230.3	Year Laid	Shape Arched		Location Details BURKE AIRPORT	
Downstream MH CSO200A0000	Length surveyed 230.3	Year Renewed	Height 93	Width 150	Pipe Joint Length	

SPR 276	MPR 2	PO Number		Customer HDR	
SPRI 3	MPRI 2	Work Order		Purpose Routine Assessment	
QSR 3Q00	QMR 2100				
OPR 278	Surveyed By Shawn_Dunnell	Direction Downstream	Date 11/04/2022		Media label
OPRI 3	Certificate Number 07001437	Pre-Cleaning No Pre-Cleaning	Time 12:27		Weather Dry
Date Cleaned			End Time 12:40		Additional Info

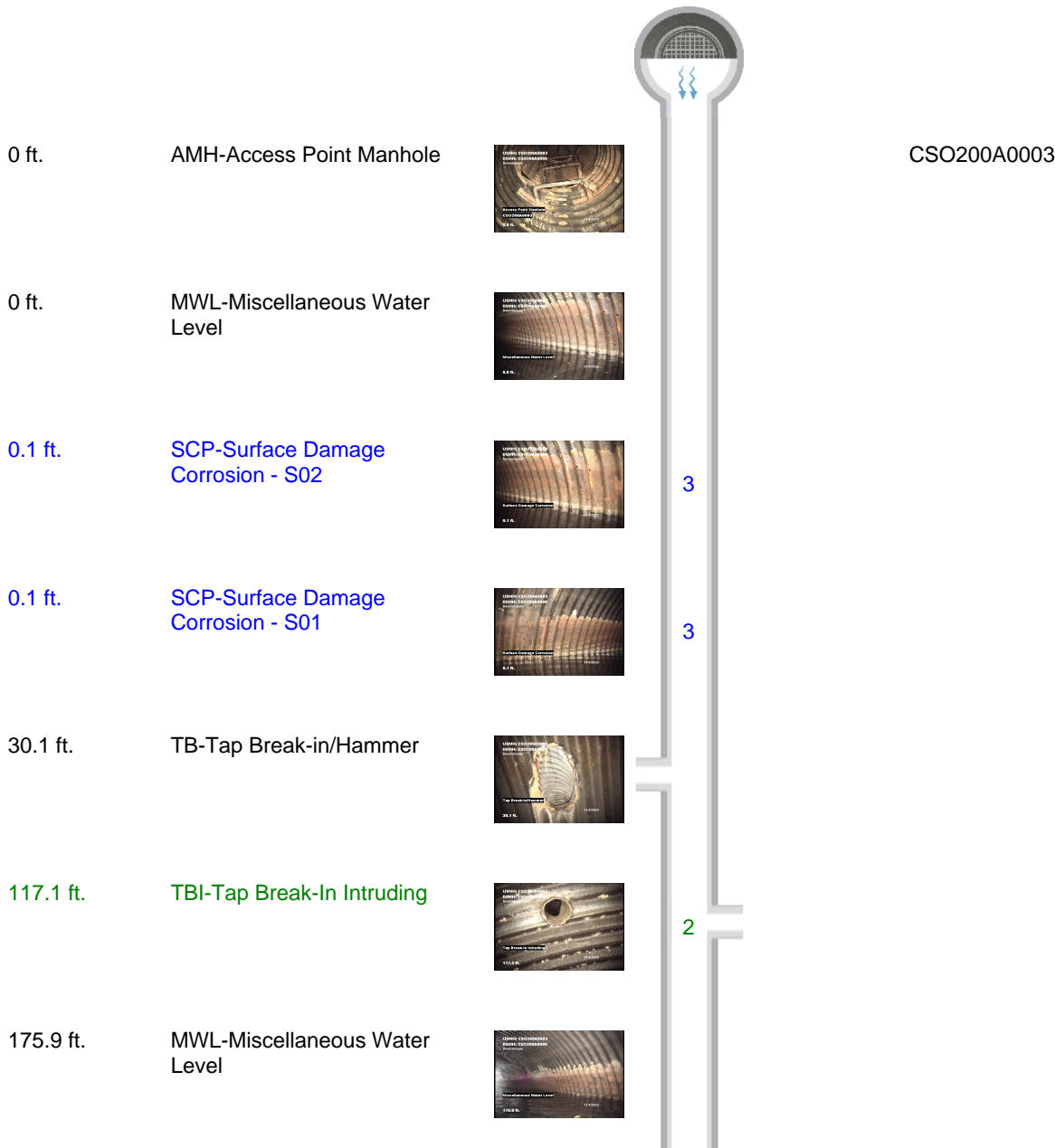
Distance	Condition	Cont. Dfct.	Values			Joint	Clock Position		Grade
			1st	2nd	%		At/From	To	
0	AMH-Access Point Manhole					<input type="checkbox"/>			
Remarks: CSO200A0003									
0	MWL-Miscellaneous Water Level				15	<input type="checkbox"/>			
0.1	SCP-Surface Damage Corrosion	S02				<input type="checkbox"/>	3	5	3
0.1	SCP-Surface Damage Corrosion	S01				<input type="checkbox"/>	7	9	3
30.1	TB-Tap Break-in/Hammer		12			<input type="checkbox"/>	2		
117.1	TBI-Tap Break-In Intruding		6	4		<input type="checkbox"/>	12		2
175.9	MWL-Miscellaneous Water Level				20	<input type="checkbox"/>			
230.3	SCP-Surface Damage Corrosion	F01				<input type="checkbox"/>	7	9	3
230.3	SCP-Surface Damage Corrosion	F02				<input type="checkbox"/>	3	5	3
230.3	MSA-Miscellaneous Survey Abandoned					<input type="checkbox"/>			
Remarks: MWL 30%									



Defect Listing Plot

Pipe Segment Reference CSO200A0003-CSO200A0000	City CLEVELAND	Street MARGINAL	Material Corrugated Metal Pipe		Location Code Airport	Sewer Use Combined Pipe
Upstream MH CSO200A0003	Total Length 230.3	Year Laid	Shape Arched		Location Details BURKE AIRPORT	
Downstream MH CSO200A0000	Length surveyed 230.3	Year Renewed	Height 93	Width 150	Pipe Joint Length	

SPR	276	MPR	2	PO Number	Customer HDR
SPRI	3	MPRI	2	Work Order	Purpose Routine Assessment
QSR	3Q00	QMR	2100		
OPR	278	Surveyed By Shawn_Dunnell		Direction Downstream	Date 11/04/2022
OPRI	3	Certificate Number 07001437		Pre-Cleaning No Pre-Cleaning	Time 12:27
		Date Cleaned		End Time 12:40	Weather Dry
					Additional Info

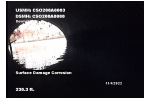




Defect Listing Plot

Pipe Segment Reference	City	Street	Material		Location Code	Sewer Use
CSO200A0003-CSO200A0000	CLEVELAND	MARGINAL	Corrugated Metal Pipe		Airport	Combined Pipe
Upstream MH CSO200A0003	Total Length 230.3	Year Laid	Shape Arched		Location Details BURKE AIRPORT	
Downstream MH CSO200A0000	Length surveyed 230.3	Year Renewed	Height 93	Width 150	Pipe Joint Length	

230.3 ft. SCP-Surface Damage Corrosion - F01



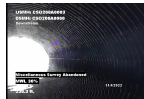
3

230.3 ft. SCP-Surface Damage Corrosion - F02



3

230.3 ft. MSA-Miscellaneous Survey Abandoned



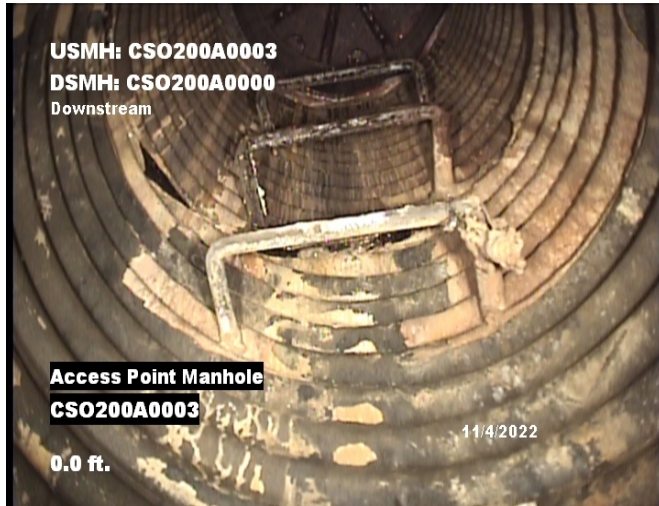
MWL 30%





4 Image Report

Pipe Segment Reference	City	Street	Material	Location Code	Sewer Use
CSO200A0003-CSO200A0000	CLEVELAND	MARGINAL	Corrugated Metal Pipe	Airport	Combined Pipe
Upstream MH CSO200A0003	Total Length 230.3	Year Laid	Shape Arched	Location Details BURKE AIRPORT	
Downstream MH CSO200A0000	Length surveyed 230.3	Year Renewed	Height 93	Width 150	Pipe Joint Length



Distance: 0.0 ft. Grade: 0
 Condition: AMH-Access Point Manhole
 Remarks: CSO200A0003



Distance: 0.0 ft. Grade: 0
 Condition: MWL-Miscellaneous Water Level
 Remarks: N/A



Distance: 0.1 ft. Grade: 3
 Condition: SCP-Surface Damage Corrosion
 Remarks: N/A



Distance: 0.1 ft. Grade: 3
 Condition: SCP-Surface Damage Corrosion
 Remarks: N/A



4 Image Report

Pipe Segment Reference	City	Street	Material	Location Code	Sewer Use
CSO200A0003-CSO200A0000	CLEVELAND	MARGINAL	Corrugated Metal Pipe	Airport	Combined Pipe
Upstream MH CSO200A0003	Total Length 230.3	Year Laid	Shape Arched	Location Details BURKE AIRPORT	
Downstream MH CSO200A0000	Length surveyed 230.3	Year Renewed	Height 93	Width 150	Pipe Joint Length



Distance: 30.1 ft. Grade: 0
Condition: TB-Tap Break-in/Hammer
Remarks: N/A



Distance: 117.1 ft. Grade: 2
Condition: TBI-Tap Break-In Intruding
Remarks: N/A



Distance: 175.9 ft. Grade: 0
Condition: MWL-Miscellaneous Water Level
Remarks: N/A



Distance: 230.3 ft. Grade: 3
Condition: SCP-Surface Damage Corrosion
Remarks: N/A

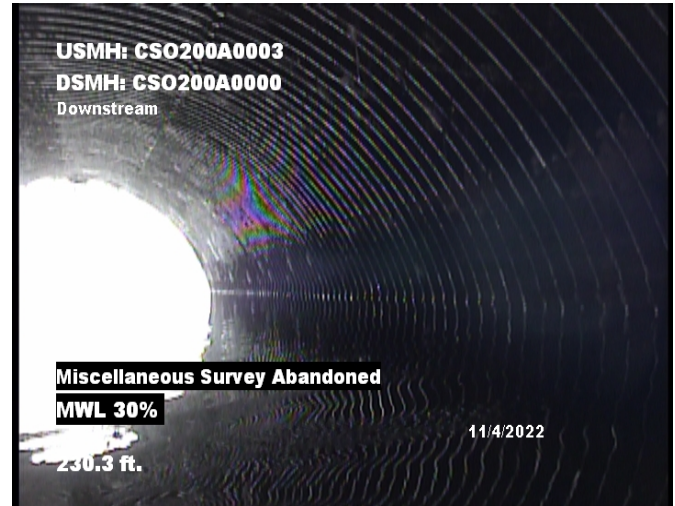


4 Image Report

Pipe Segment Reference	City	Street	Material	Location Code	Sewer Use
CSO200A0003-CSO200A0000	CLEVELAND	MARGINAL	Corrugated Metal Pipe	Airport	Combined Pipe
Upstream MH CSO200A0003	Total Length 230.3	Year Laid	Shape Arched	Location Details BURKE AIRPORT	
Downstream MH CSO200A0000	Length surveyed 230.3	Year Renewed	Height 93	Width 150	Pipe Joint Length



Distance: 230.3 ft. Grade: 3
 Condition: SCP-Surface Damage Corrosion
 Remarks: N/A



Distance: 230.3 ft. Grade: 0
 Condition: MSA-Miscellaneous Survey Abandoned
 Remarks: MWL 30%