



## Defect Listing

<b>Pipe Segment Reference</b> CSO200A0004-CSO200A0003	<b>City</b> CLEVELAND	<b>Street</b> MARGINAL	<b>Material</b> Corrugated Metal Pipe		<b>Location Code</b> Airport	<b>Sewer Use</b> Combined Pipe
<b>Upstream MH</b> CSO200A0004	Total Length 297.7	Year Laid	<b>Shape</b> Arched		Location Details BURKE AIRPORT	
<b>Downstream MH</b> CSO200A0003	Length surveyed 297.7	Year Renewed	<b>Height</b> 93	<b>Width</b> 150	Pipe Joint Length	

SPR	351	MPR	6	PO Number	<b>Customer</b> HDR
SPRI	3	MPRI	3	Work Order	<b>Purpose</b> Routine Assessment
QSR	3V00	QMR	4121		
OPR	357	<b>Surveyed By</b> Shawn_Dunnell		<b>Direction</b> Downstream	<b>Date</b> 11/04/2022
OPRI	3	<b>Certificate Number</b> 07001437		<b>Pre-Cleaning</b> No Pre-Cleaning	<b>Time</b> 12:08
		Date Cleaned		<b>End Time</b> 12:25	<b>Weather</b> Dry
					Additional Info

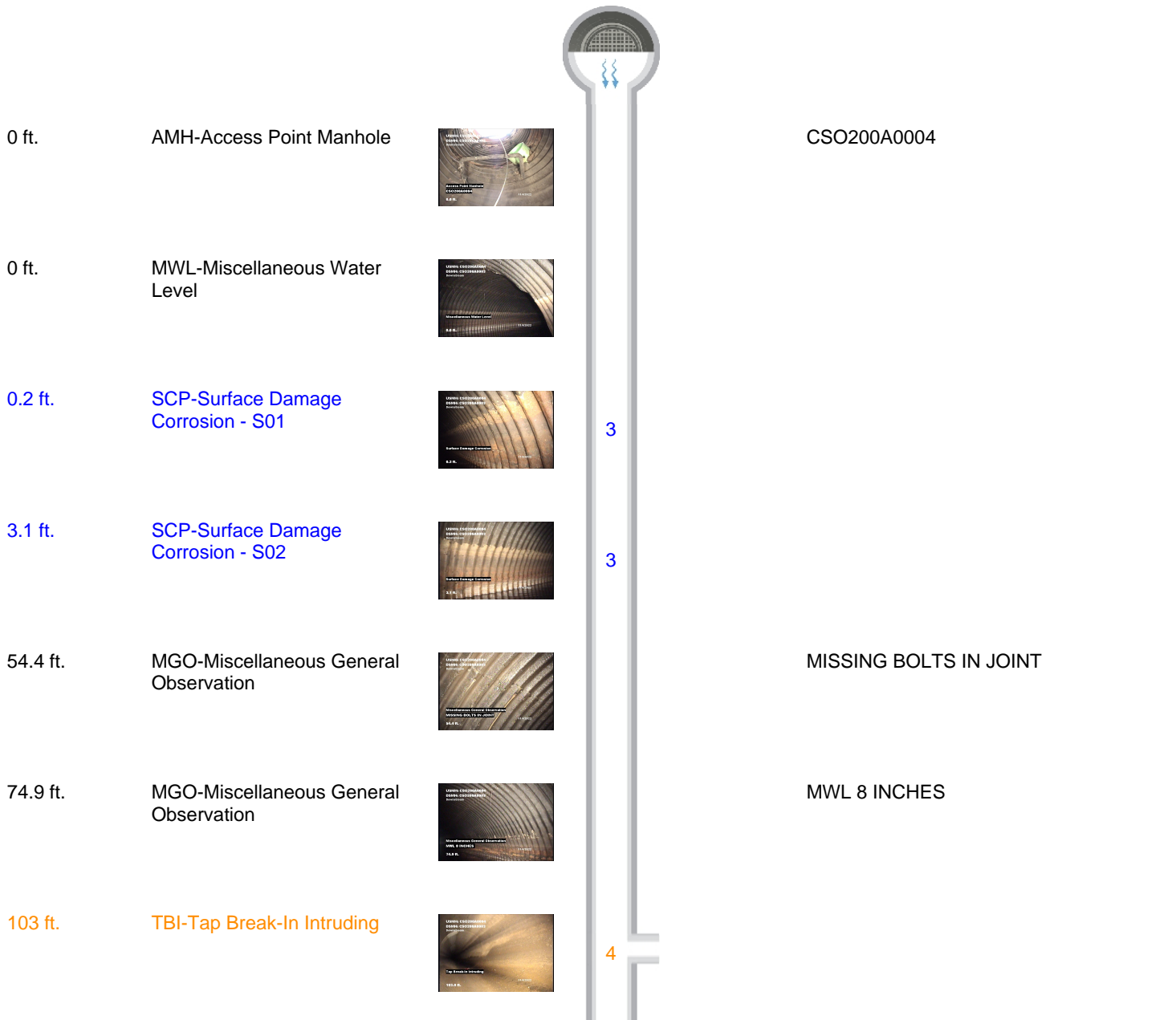
Distance	Condition	Cont. Dfct.	Values			Joint	Clock Position		Grade
			1st	2nd	%		At/From	To	
0	AMH-Access Point Manhole					<input type="checkbox"/>			
<b>Remarks:</b> CSO200A0004									
0	MWL-Miscellaneous Water Level				20	<input type="checkbox"/>			
0.2	SCP-Surface Damage Corrosion	S01				<input type="checkbox"/>	2	5	3
3.1	SCP-Surface Damage Corrosion	S02				<input type="checkbox"/>	7	10	3
54.4	MGO-Miscellaneous General Observation					<input type="checkbox"/>			
<b>Remarks:</b> MISSING BOLTS IN JOINT									
74.9	MGO-Miscellaneous General Observation					<input type="checkbox"/>			
<b>Remarks:</b> MWL 8 INCHES									
103	TBI-Tap Break-In Intruding		36	24		<input type="checkbox"/>	9		4
163.3	TB-Tap Break-in/Hammer		12			<input type="checkbox"/>	1		
174.9	MGO-Miscellaneous General Observation					<input type="checkbox"/>			
<b>Remarks:</b> 15 INCHES									
202.3	OBR-Obstruction Rocks				0	<input type="checkbox"/>	6		2
<b>Remarks:</b> LES THAN 5%									
293.3	SCP-Surface Damage Corrosion	F02				<input type="checkbox"/>	7	10	3
295.7	SCP-Surface Damage Corrosion	F01				<input type="checkbox"/>	2	5	3
297.7	AMH-Access Point Manhole					<input type="checkbox"/>			
<b>Remarks:</b> CSO200A0003									



## Defect Listing Plot

<b>Pipe Segment Reference</b> CSO200A0004-CSO200A0003	<b>City</b> CLEVELAND	<b>Street</b> MARGINAL	<b>Material</b> Corrugated Metal Pipe		<b>Location Code</b> Airport	<b>Sewer Use</b> Combined Pipe
<b>Upstream MH</b> CSO200A0004	Total Length 297.7	Year Laid	<b>Shape</b> Arched		Location Details BURKE AIRPORT	
<b>Downstream MH</b> CSO200A0003	Length surveyed 297.7	Year Renewed	<b>Height</b> 93	<b>Width</b> 150	Pipe Joint Length	

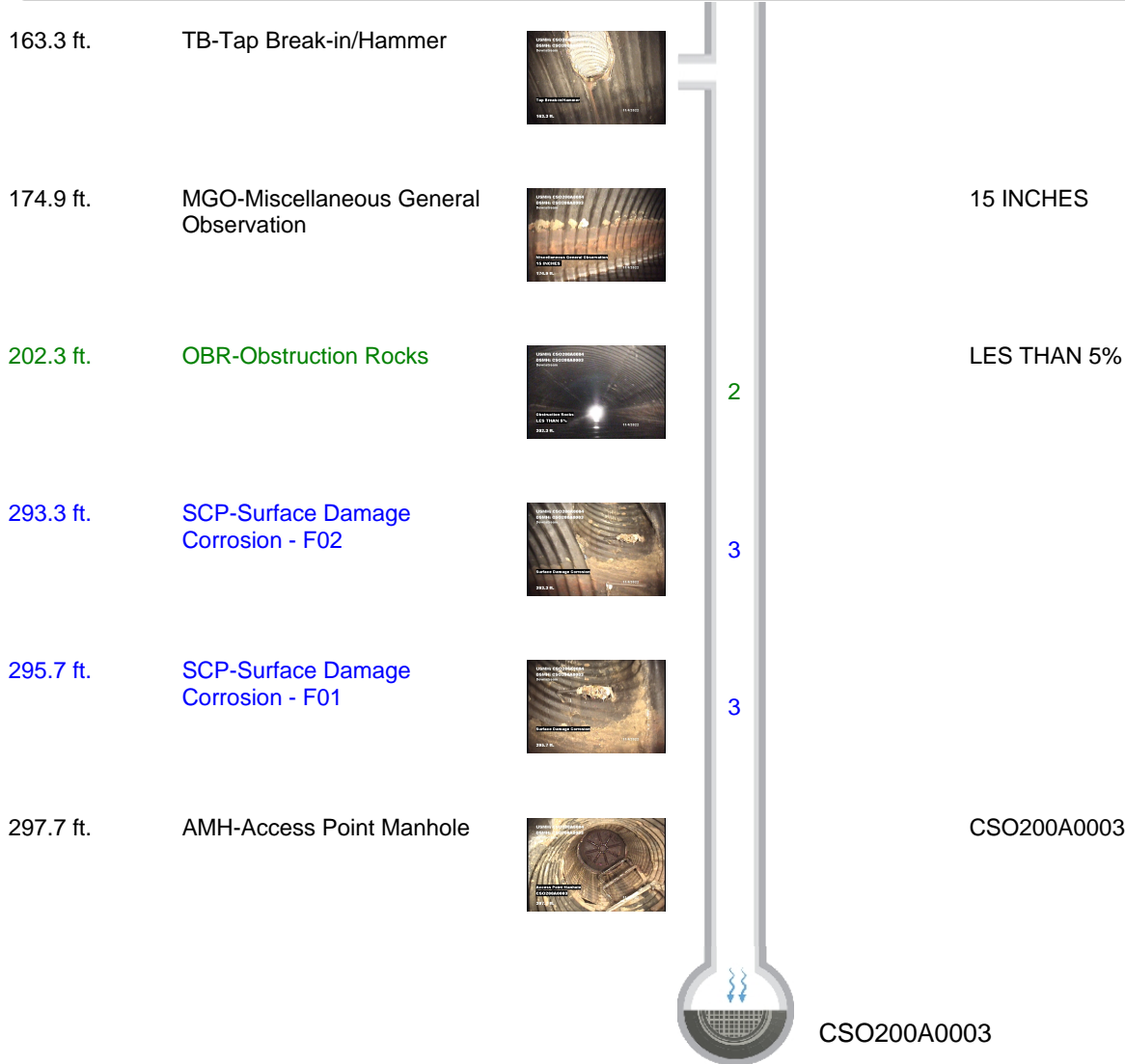
SPR	351	MPR	6	PO Number		Customer HDR	
SPRI	3	MPRI	3	Work Order		Purpose Routine Assessment	
QSR	3V00	QMR	4121			Media label	
OPR	357	<b>Surveyed By</b> Shawn_Dunnell		<b>Direction</b> Downstream	<b>Date</b> 11/04/2022		
OPRI	3	<b>Certificate Number</b> 07001437		<b>Pre-Cleaning</b> No Pre-Cleaning	<b>Time</b> 12:08	<b>Weather</b> Dry	
Date Cleaned					<b>End Time</b> 12:25	Additional Info	





### Defect Listing Plot

Pipe Segment Reference	City	Street	Material	Location Code	Sewer Use
CSO200A0004-CSO200A0003	CLEVELAND	MARGINAL	Corrugated Metal Pipe	Airport	Combined Pipe
Upstream MH CSO200A0004	Total Length 297.7	Year Laid	Shape Arched	Location Details BURKE AIRPORT	
Downstream MH CSO200A0003	Length surveyed 297.7	Year Renewed	Height 93	Width 150	Pipe Joint Length





### 4 Image Report

Pipe Segment Reference	City	Street	Material	Location Code	Sewer Use
CSO200A0004-CSO200A0003	CLEVELAND	MARGINAL	Corrugated Metal Pipe	Airport	Combined Pipe
Upstream MH CSO200A0004	Total Length 297.7	Year Laid	Shape Arched	Location Details BURKE AIRPORT	
Downstream MH CSO200A0003	Length surveyed 297.7	Year Renewed	Height 93	Width 150	Pipe Joint Length



Distance: 0.0 ft.      Grade: 0  
 Condition: AMH-Access Point Manhole  
 Remarks: CSO200A0004



Distance: 0.0 ft.      Grade: 0  
 Condition: MWL-Miscellaneous Water Level  
 Remarks: N/A



Distance: 0.2 ft.      Grade: 3  
 Condition: SCP-Surface Damage Corrosion  
 Remarks: N/A

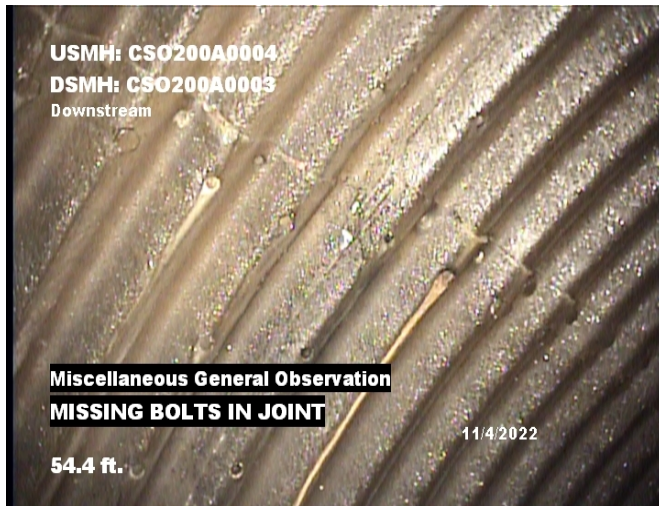


Distance: 3.1 ft.      Grade: 3  
 Condition: SCP-Surface Damage Corrosion  
 Remarks: N/A

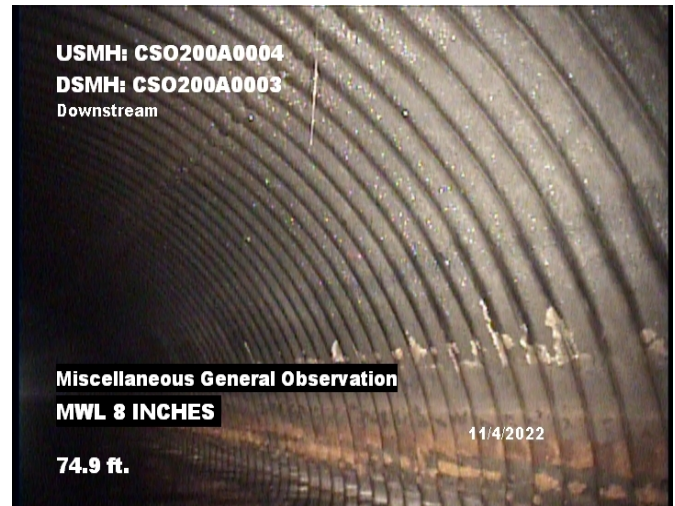


### 4 Image Report

Pipe Segment Reference	City	Street	Material	Location Code	Sewer Use
CSO200A0004-CSO200A0003	CLEVELAND	MARGINAL	Corrugated Metal Pipe	Airport	Combined Pipe
Upstream MH CSO200A0004	Total Length 297.7	Year Laid	Shape Arched	Location Details BURKE AIRPORT	
Downstream MH CSO200A0003	Length surveyed 297.7	Year Renewed	Height 93	Width 150	Pipe Joint Length



Distance: 54.4 ft.      Grade: 0  
Condition: MGO-Miscellaneous General Observation  
Remarks: MISSING BOLTS IN JOINT



Distance: 74.9 ft.      Grade: 0  
Condition: MGO-Miscellaneous General Observation  
Remarks: MWL 8 INCHES



Distance: 103.0 ft.      Grade: 4  
Condition: TBI-Tap Break-In Intruding  
Remarks: N/A



Distance: 163.3 ft.      Grade: 0  
Condition: TB-Tap Break-in/Hammer  
Remarks: N/A



### 4 Image Report

Pipe Segment Reference	City	Street	Material	Location Code	Sewer Use
CSO200A0004-CSO200A0003	CLEVELAND	MARGINAL	Corrugated Metal Pipe	Airport	Combined Pipe
Upstream MH CSO200A0004	Total Length 297.7	Year Laid	Shape Arched	Location Details BURKE AIRPORT	
Downstream MH CSO200A0003	Length surveyed 297.7	Year Renewed	Height 93	Width 150	Pipe Joint Length



Distance: 174.9 ft.      Grade: 0  
 Condition: MGO-Miscellaneous General Observation  
 Remarks: 15 INCHES



Distance: 202.3 ft.      Grade: 2  
 Condition: OBR-Obstruction Rocks  
 Remarks: LES THAN 5%



Distance: 293.3 ft.      Grade: 3  
 Condition: SCP-Surface Damage Corrosion  
 Remarks: N/A



Distance: 295.7 ft.      Grade: 3  
 Condition: SCP-Surface Damage Corrosion  
 Remarks: N/A



### 4 Image Report

Pipe Segment Reference	City	Street	Material	Location Code	Sewer Use
CSO200A0004-CSO200A0003	CLEVELAND	MARGINAL	Corrugated Metal Pipe	Airport	Combined Pipe
Upstream MH CSO200A0004	Total Length 297.7	Year Laid	Shape Arched	Location Details BURKE AIRPORT	
Downstream MH CSO200A0003	Length surveyed 297.7	Year Renewed	Height 93	Width 150	Pipe Joint Length



Distance: 297.7 ft.      Grade: 0  
 Condition: AMH-Access Point Manhole  
 Remarks: CSO200A0003