



Defect Listing

Pipe Segment Reference CSO200A0005-CSO200A0004	City CLEVELAND	Street MARGINAL	Material Corrugated Metal Pipe		Location Code Airport	Sewer Use Combined Pipe
Upstream MH CSO200A0005	Total Length 127.4	Year Laid	Shape Arched		Location Details BURKE AIRPORT	
Downstream MH CSO200A0004	Length surveyed 127.4	Year Renewed	Height 93	Width 150	Pipe Joint Length	

SPR 135	MPR 0	PO Number		Customer HDR	
SPRI 3	MPRI 0	Work Order		Purpose Routine Assessment	
QSR 3H00	QMR 0000				
OPR 135	Surveyed By Shawn_Dunnell	Direction Upstream	Date 11/04/2022		Media label
OPRI 3	Certificate Number 07001437	Pre-Cleaning No Pre-Cleaning	Time 11:50		Weather Dry
Date Cleaned			End Time 12:03		Additional Info

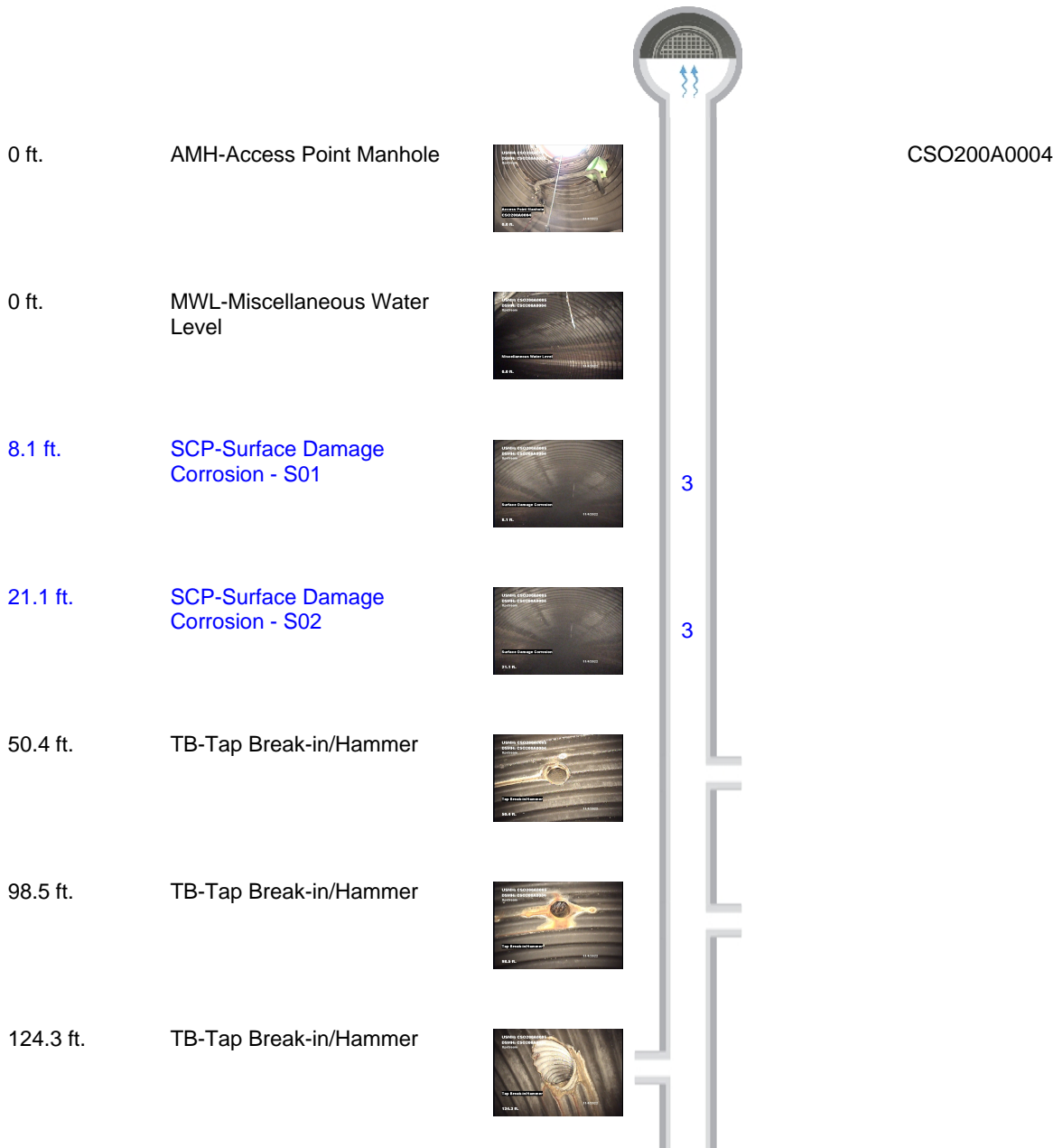
Distance	Condition	Cont. Dfct.	Values			Joint	Clock Position		Grade
			1st	2nd	%		At/From	To	
0	AMH-Access Point Manhole					<input type="checkbox"/>			
Remarks: CSO200A0004									
0	MWL-Miscellaneous Water Level				20	<input type="checkbox"/>			
8.1	SCP-Surface Damage Corrosion	S01				<input type="checkbox"/>	7	8	3
21.1	SCP-Surface Damage Corrosion	S02				<input type="checkbox"/>	2	5	3
50.4	TB-Tap Break-in/Hammer		6			<input type="checkbox"/>	12		
98.5	TB-Tap Break-in/Hammer		6			<input type="checkbox"/>	12		
124.3	TB-Tap Break-in/Hammer		12			<input type="checkbox"/>	2		
127.3	SCP-Surface Damage Corrosion	F02				<input type="checkbox"/>	2	5	3
127.3	SCP-Surface Damage Corrosion	F01				<input type="checkbox"/>	7	8	3
127.4	AMH-Access Point Manhole					<input type="checkbox"/>			
Remarks: CSO200A0005									



Defect Listing Plot

Pipe Segment Reference CSO200A0005-CSO200A0004	City CLEVELAND	Street MARGINAL	Material Corrugated Metal Pipe		Location Code Airport	Sewer Use Combined Pipe
Upstream MH CSO200A0005	Total Length 127.4	Year Laid	Shape Arched		Location Details BURKE AIRPORT	
Downstream MH CSO200A0004	Length surveyed 127.4	Year Renewed	Height 93	Width 150	Pipe Joint Length	

SPR	135	MPR	0	PO Number		Customer HDR	
SPRI	3	MPRI	0	Work Order		Purpose Routine Assessment	
QSR	3H00	QMR	0000				
OPR	135	Surveyed By Shawn_Dunnell		Direction Upstream	Date 11/04/2022	Media label	
OPRI	3	Certificate Number 07001437		Pre-Cleaning No Pre-Cleaning	Time 11:50	Weather Dry	
Date Cleaned					End Time 12:03	Additional Info	

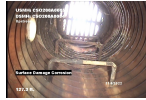




Defect Listing Plot

Pipe Segment Reference	City	Street	Material	Location Code	Sewer Use
CSO200A0005-CSO200A0004	CLEVELAND	MARGINAL	Corrugated Metal Pipe	Airport	Combined Pipe
Upstream MH CSO200A0005	Total Length 127.4	Year Laid	Shape Arched	Location Details BURKE AIRPORT	
Downstream MH CSO200A0004	Length surveyed 127.4	Year Renewed	Height 93	Width 150	Pipe Joint Length

127.3 ft. SCP-Surface Damage
Corrosion - F02



3

127.3 ft. SCP-Surface Damage
Corrosion - F01

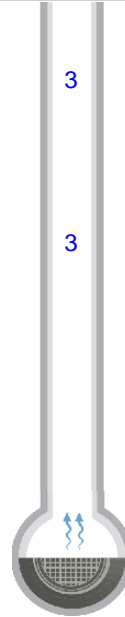


3

127.4 ft. AMH-Access Point Manhole



CSO200A0005



CSO200A0004



4 Image Report

Pipe Segment Reference	City	Street	Material	Location Code	Sewer Use
CSO200A0005-CSO200A0004	CLEVELAND	MARGINAL	Corrugated Metal Pipe	Airport	Combined Pipe
Upstream MH CSO200A0005	Total Length 127.4	Year Laid	Shape Arched	Location Details BURKE AIRPORT	
Downstream MH CSO200A0004	Length surveyed 127.4	Year Renewed	Height 93	Width 150	Pipe Joint Length



Distance: 0.0 ft. Grade: 0
 Condition: AMH-Access Point Manhole
 Remarks: CSO200A0004



Distance: 0.0 ft. Grade: 0
 Condition: MWL-Miscellaneous Water Level
 Remarks: N/A



Distance: 8.1 ft. Grade: 3
 Condition: SCP-Surface Damage Corrosion
 Remarks: N/A



Distance: 21.1 ft. Grade: 3
 Condition: SCP-Surface Damage Corrosion
 Remarks: N/A



4 Image Report

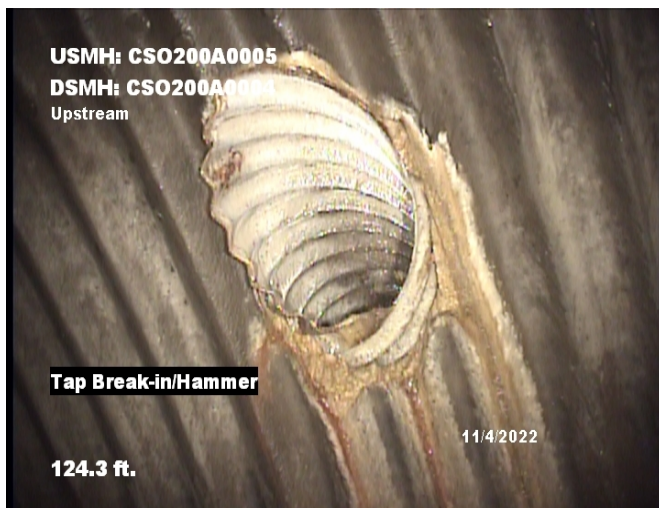
Pipe Segment Reference	City	Street	Material	Location Code	Sewer Use
CSO200A0005-CSO200A0004	CLEVELAND	MARGINAL	Corrugated Metal Pipe	Airport	Combined Pipe
Upstream MH CSO200A0005	Total Length 127.4	Year Laid	Shape Arched	Location Details BURKE AIRPORT	
Downstream MH CSO200A0004	Length surveyed 127.4	Year Renewed	Height 93	Width 150	Pipe Joint Length



Distance: 50.4 ft. Grade: 0
Condition: TB-Tap Break-in/Hammer
Remarks: N/A



Distance: 98.5 ft. Grade: 0
Condition: TB-Tap Break-in/Hammer
Remarks: N/A



Distance: 124.3 ft. Grade: 0
Condition: TB-Tap Break-in/Hammer
Remarks: N/A



Distance: 127.3 ft. Grade: 3
Condition: SCP-Surface Damage Corrosion
Remarks: N/A



4 Image Report

Pipe Segment Reference	City	Street	Material	Location Code	Sewer Use
CSO200A0005-CSO200A0004	CLEVELAND	MARGINAL	Corrugated Metal Pipe	Airport	Combined Pipe
Upstream MH CSO200A0005	Total Length 127.4	Year Laid	Shape Arched	Location Details BURKE AIRPORT	
Downstream MH CSO200A0004	Length surveyed 127.4	Year Renewed	Height 93	Width 150	Pipe Joint Length



Distance: 127.3 ft. Grade: 3
 Condition: SCP-Surface Damage Corrosion
 Remarks: N/A



Distance: 127.4 ft. Grade: 0
 Condition: AMH-Access Point Manhole
 Remarks: CSO200A0005