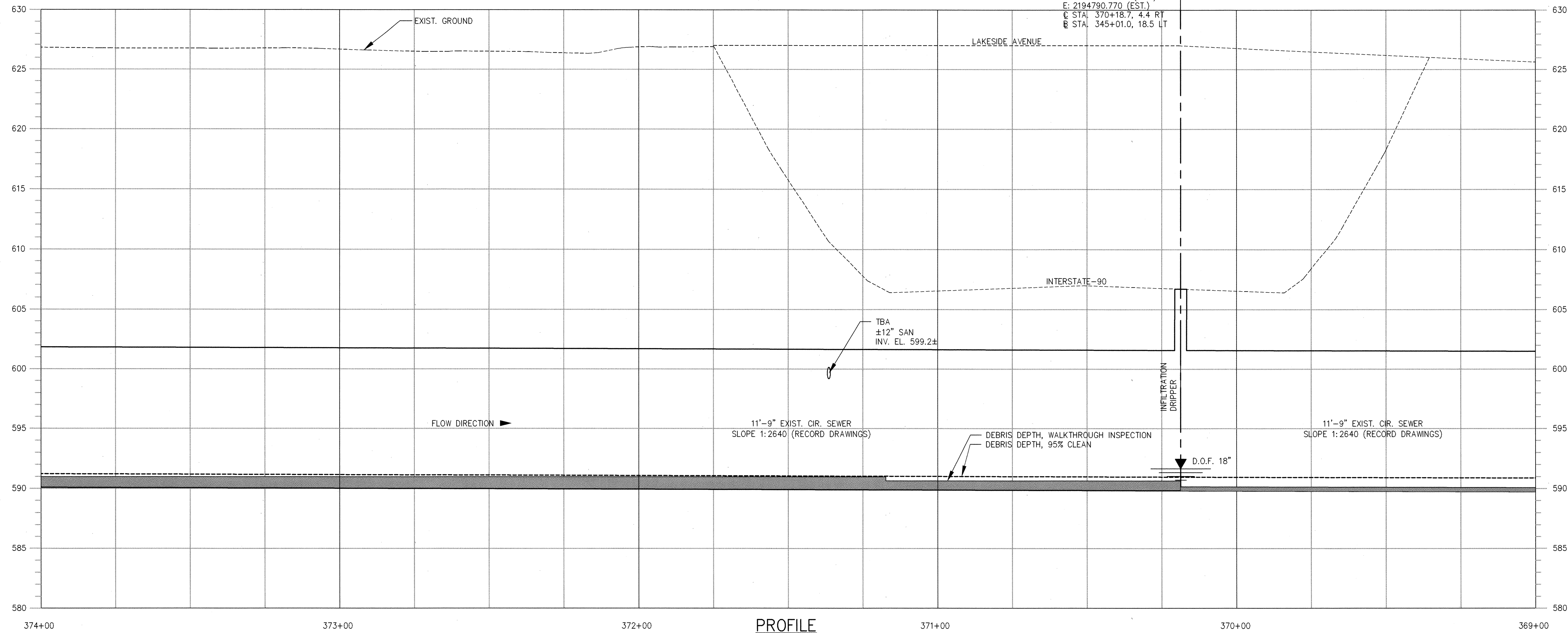




PLAN



PROFILE

MH EAA00320  
 RIM EL. 606.4±  
 INV. EL. 589.8±  
 N: 674352.0779 (EST.)  
 E: 2194790.770 (EST.)  
 C STA. 370+18.7, 4.4 RT  
 B STA. 345+01.0, 18.5 LT

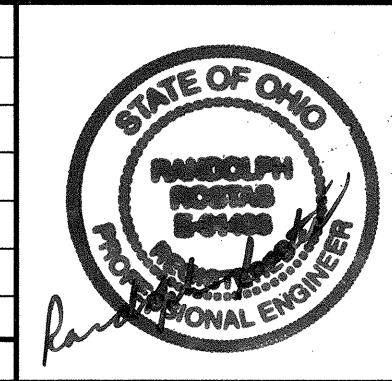
MH EAA00320 WAS NOT SURVEYED. ITS C  
 STATION, RIM ELEVATION, AND COORDINATES  
 WERE ESTIMATED USING THE AERIAL  
 PHOTOGRAPHY AND THE TOPOGRAPHY.

NOTE:  
 THESE BASELINE DRAWINGS REPRESENT THE EASTERLY  
 INTERCEPTOR AT THE TIME OF INSPECTIONS PERFORMED IN  
 2006 AND ARE FOR INFORMATIONAL PURPOSES ONLY.

P:\0003206-EHC\03206-EHC-FULL SET\CZEH019F.DWG  
 LAST UPDATE: Tuesday, April 17, 2007 10:59:48 AM  
 PLOT DATE: Wednesday, May 30, 2007 12:55:46 PM

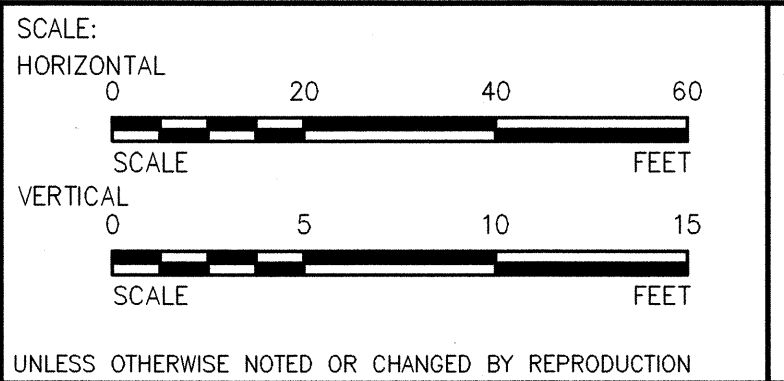
ANSI D - 3-8-05

NUMBER	DATE	MADE BY	CHECKED	DESCRIPTION



**Northeast Ohio Regional Sewer District**  
 Protecting Your Health and Environment  
**METCALF & EDDY | AECOM**

DESIGNED BY: JSC  
 DRAWN BY: WAG  
 DEPT. CHECK: RR  
 PROJ. CHECK: RR



NORTHEAST OHIO REGIONAL SEWER DISTRICT  
 EASTERLY INTERCEPTOR HYDRAULIC  
 IMPROVEMENTS CONTRACT (EIHC)  
**PLAN AND PROFILE**  
**STA. 374+00 TO 369+00**  
 NOT FOR CONSTRUCTION  
 06/01/2007

JOB: 60003206  
 FILE NO.: 60003206-EHC  
 CAD FILE: CZEH019F.dwg  
 SHEET: C-19