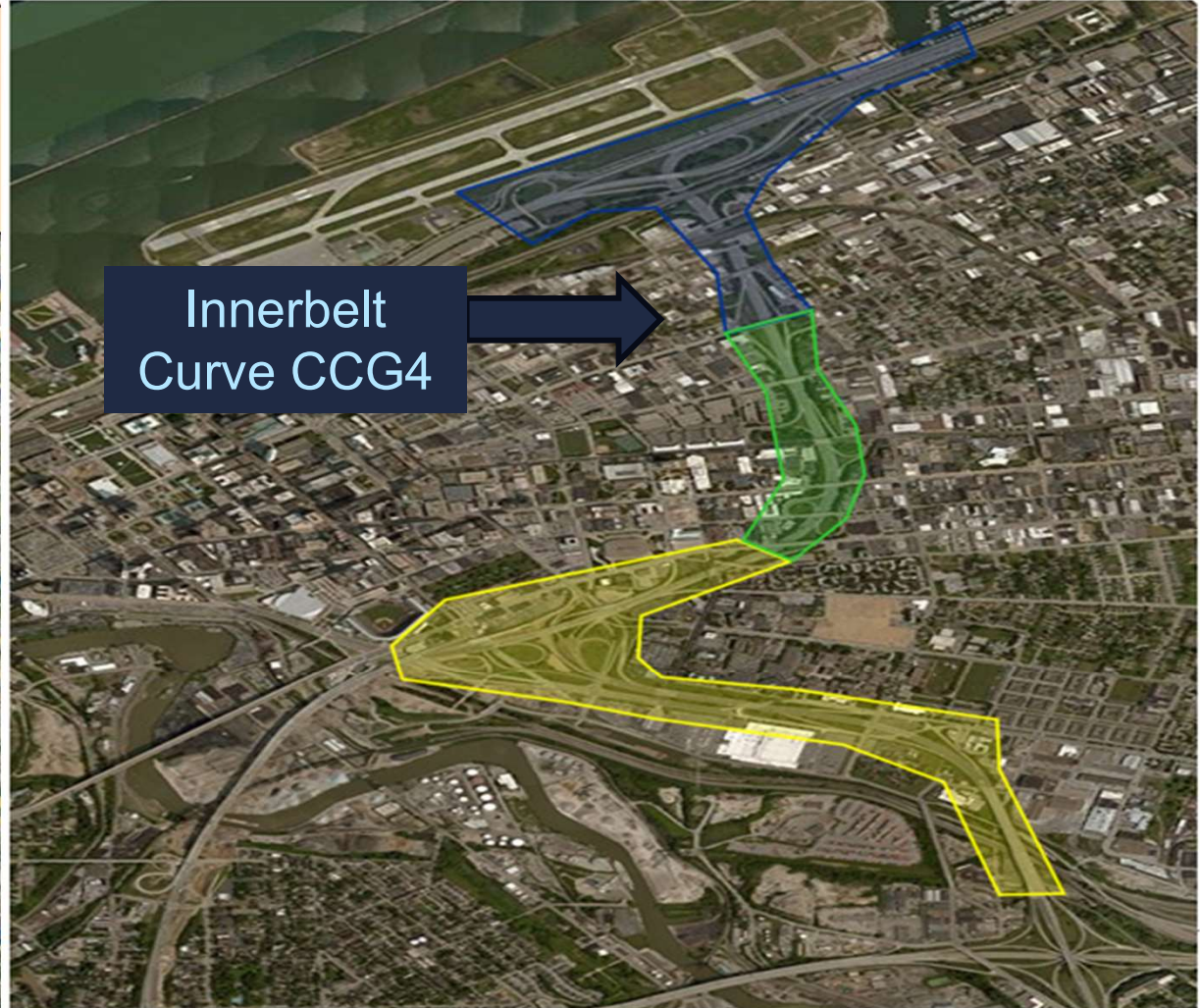
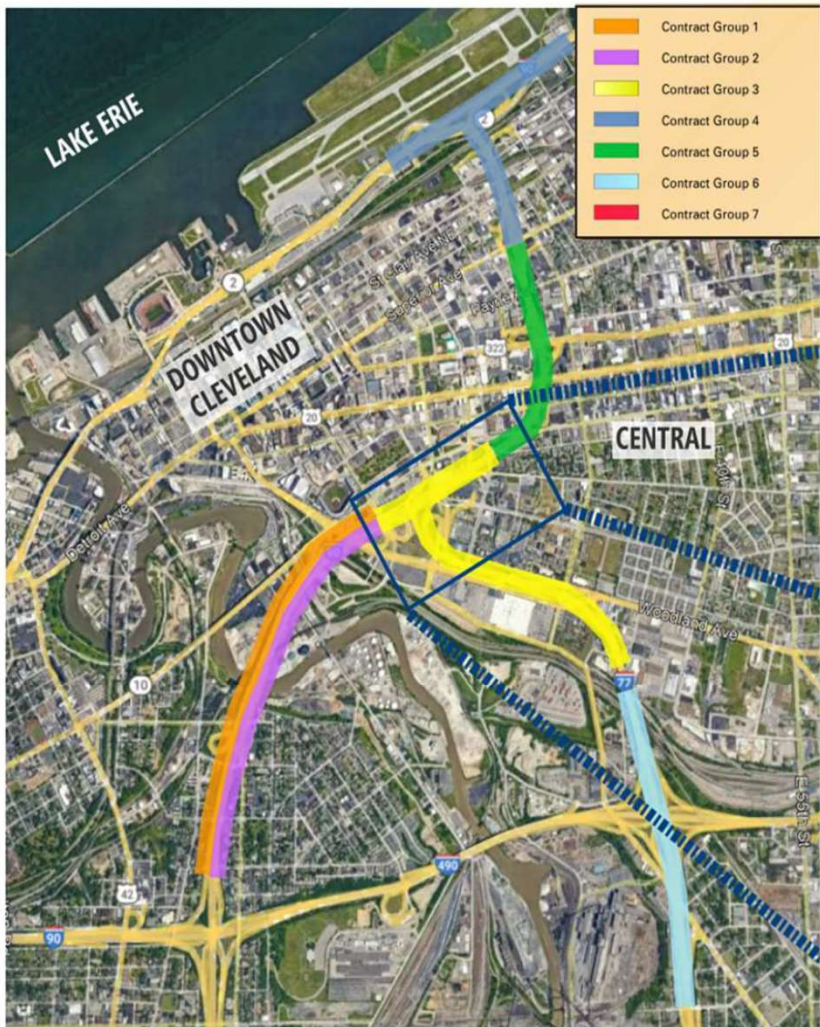




# CLEVELAND INNERBELT CUY-CCG4- INNERBELT CURVE PID 77413

Project Sponsor:  
Ohio Department of Transportation  
District 12  
September 20, 2023

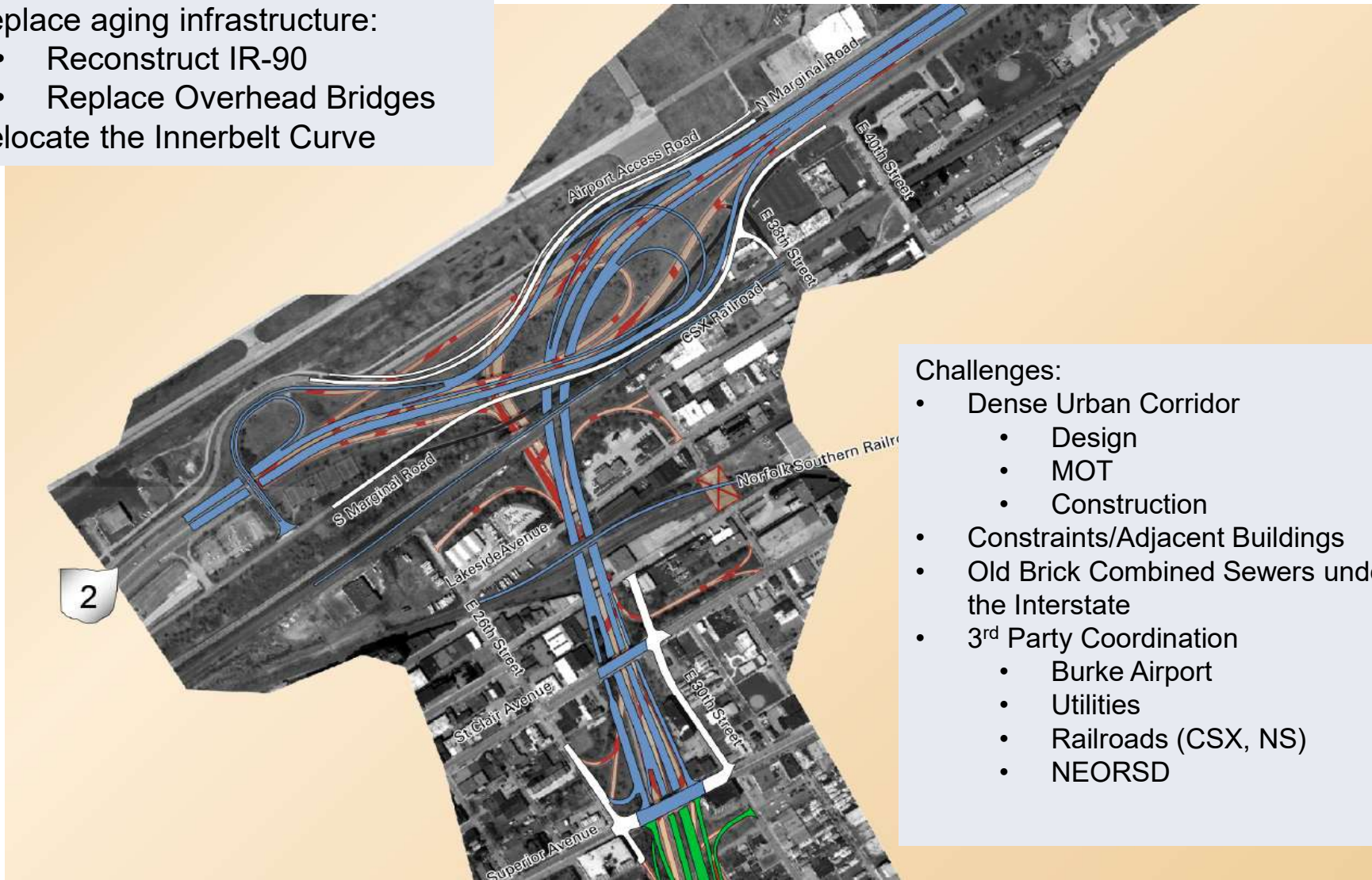
# CLEVELAND INNERBELT PLAN





# CCG4 INNERBELT CURVE: PROJECT OVERVIEW

- Replace aging infrastructure:
  - Reconstruct IR-90
  - Replace Overhead Bridges
- Relocate the Innerbelt Curve



## Challenges:

- Dense Urban Corridor
  - Design
  - MOT
  - Construction
- Constraints/Adjacent Buildings
- Old Brick Combined Sewers under the Interstate
- 3<sup>rd</sup> Party Coordination
  - Burke Airport
  - Utilities
  - Railroads (CSX, NS)
  - NEORSD

# CCG4 INNERBELT CURVE: IMPROVE CONDITION



Pavement reaching the end of its useful life



Nearing unacceptable Structure Ratings



# CCG4 INNERBELT CURVE: IMPROVE SAFETY



#102



Reduce Crashes



Improve Roadway Geometry



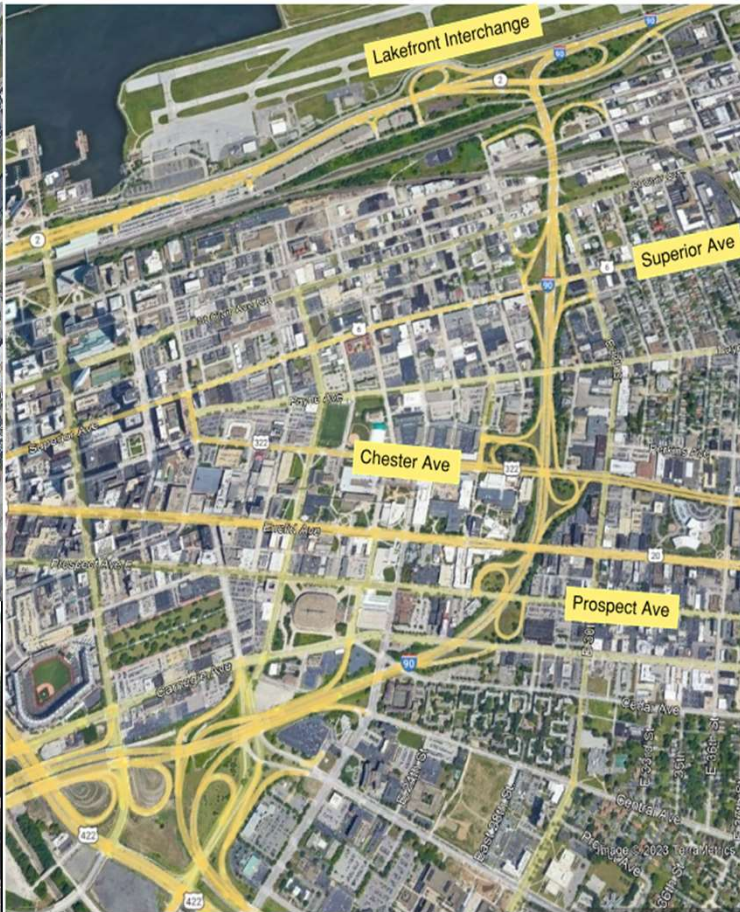
Reduce Congestion



# CCG4 INNERBELT CURVE: IMPROVE ROADWAY GEOMETRY



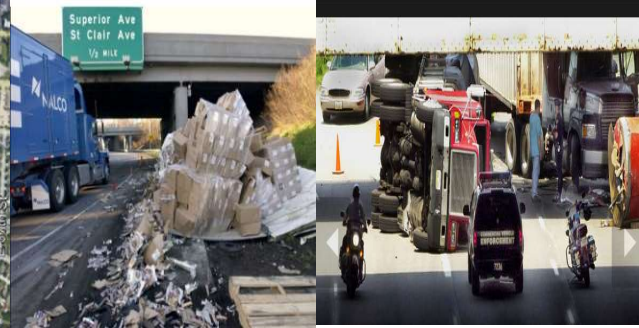
Insufficient lane reduction from 4 to 2



Closely spaced ramps/interchanges and weaves

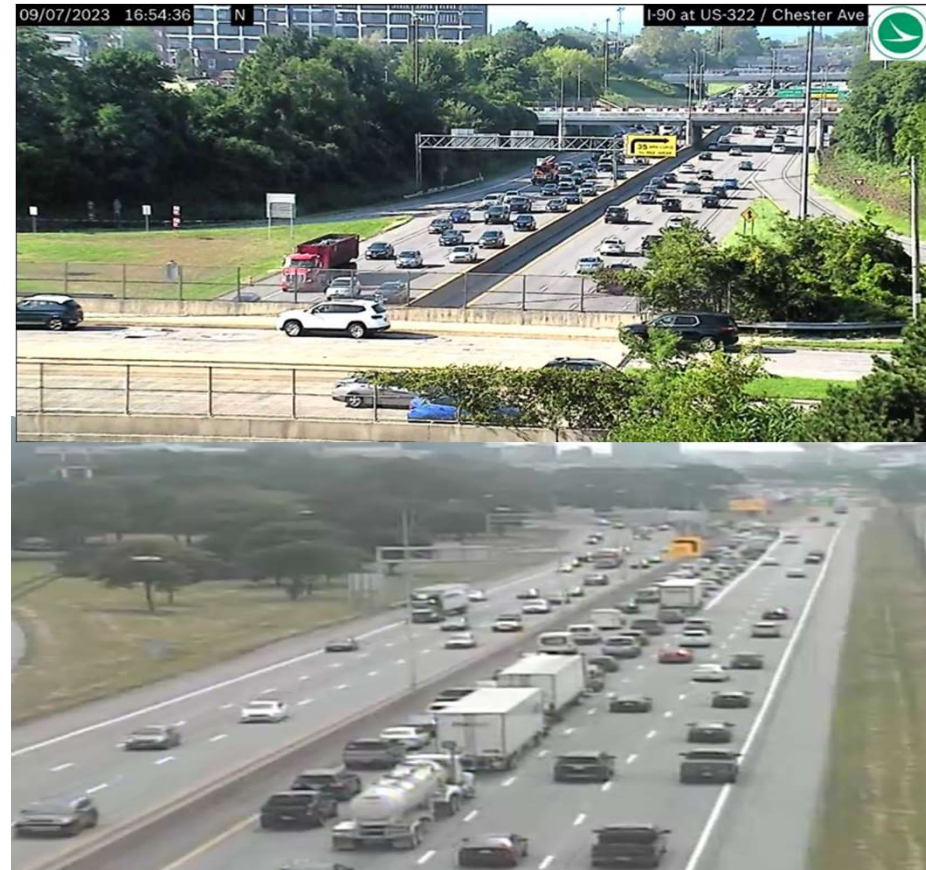
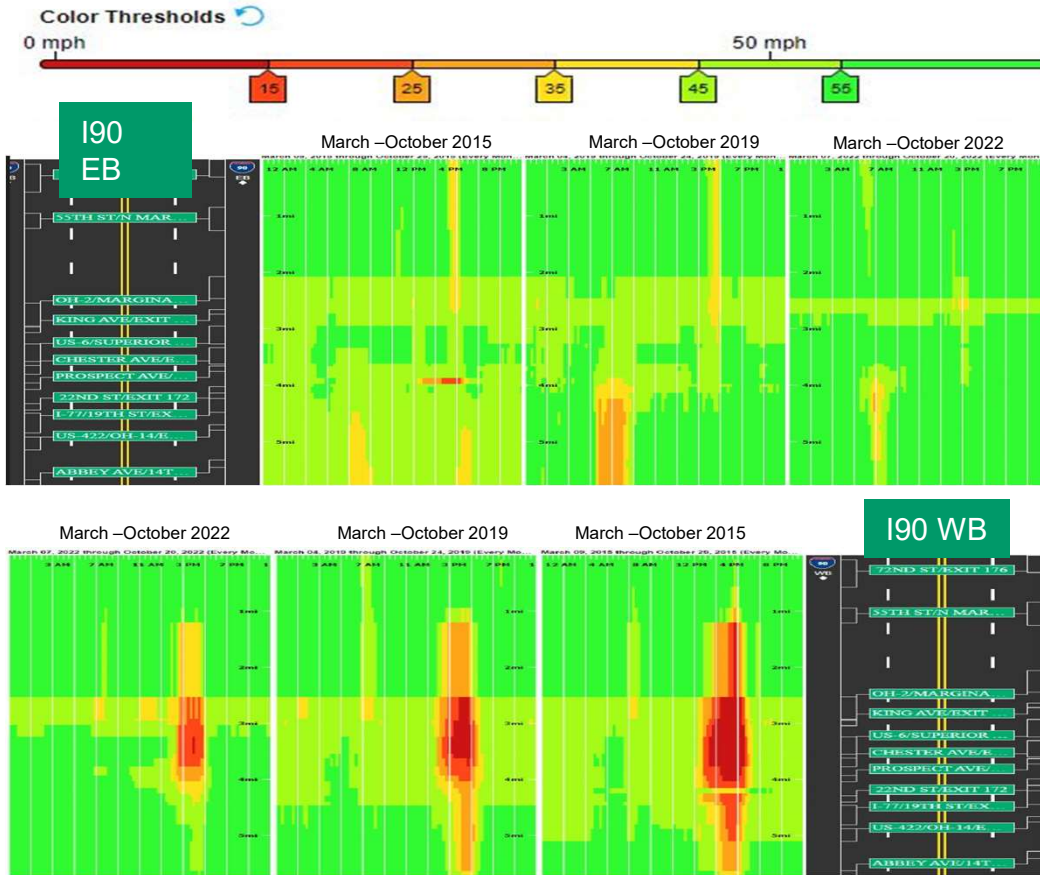


Horizontal Geometry of the curve





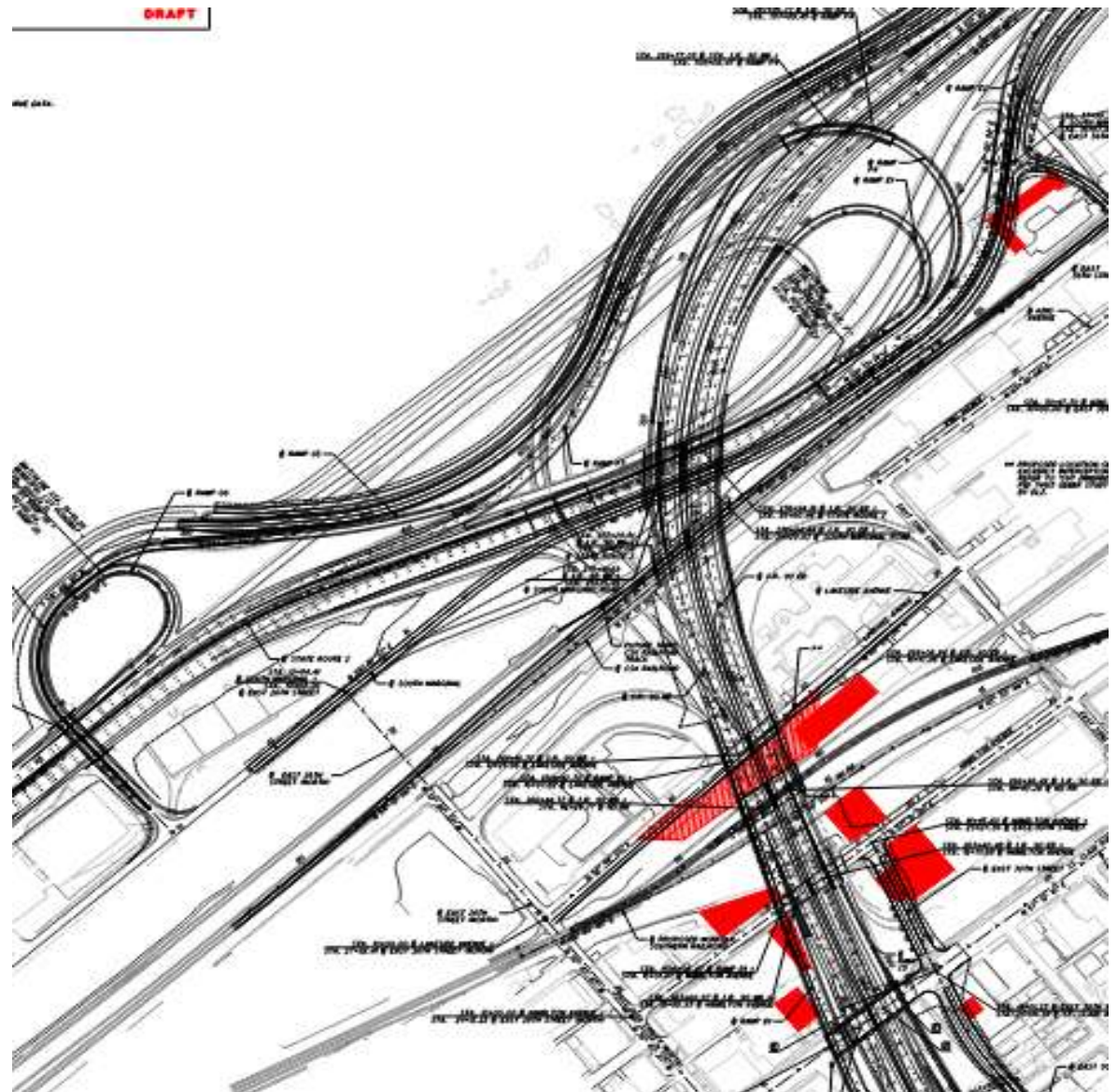
# CCG4 INNERBELT CURVE: REDUCE CONGESTION



Innerbelt Curve PM Peak

# CCG4 INNERBELT CURVE: FUNDING PHASES

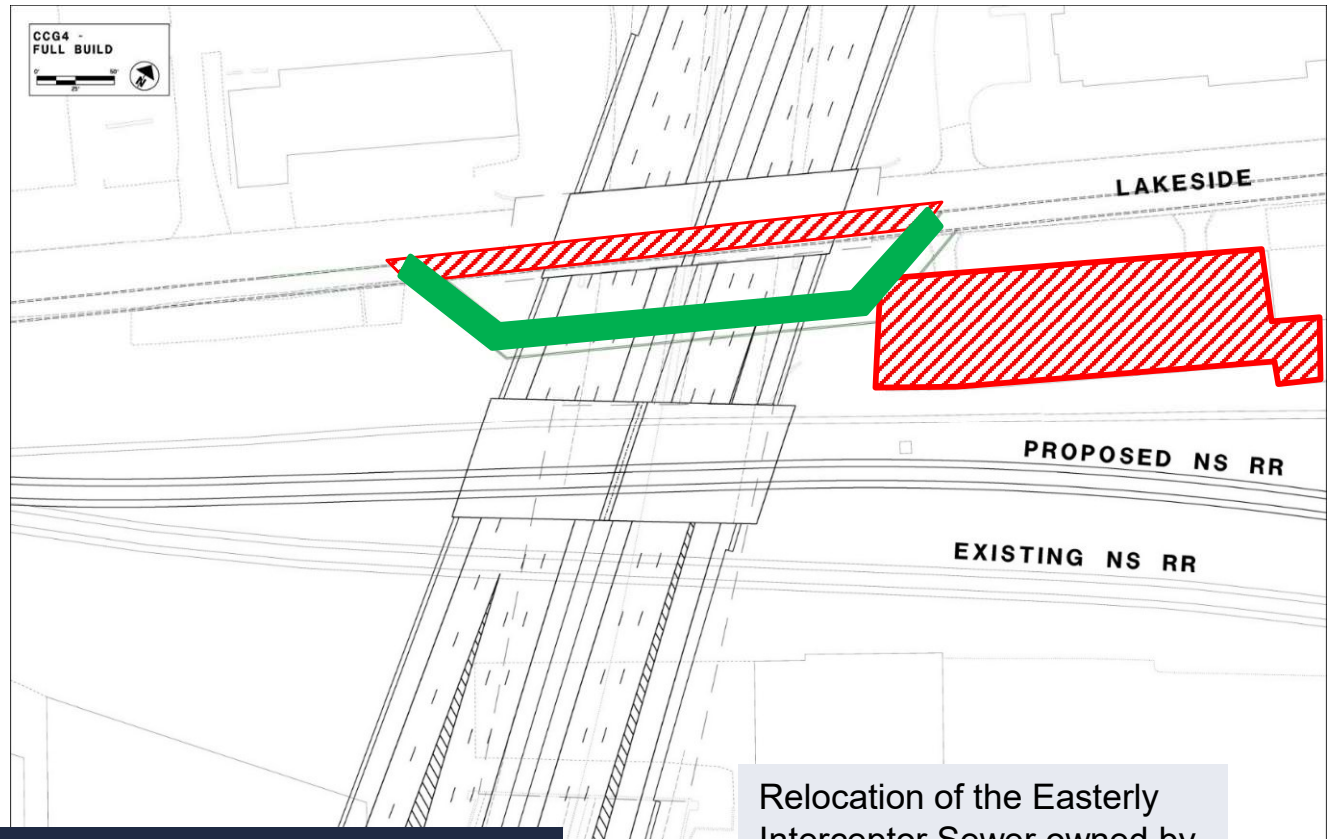
- *A-86745-Easterly Interceptor*
- *B-80408-CSX Bridge*
- *C-86744-NS Bridge*
- *D-82392-Overhead Bridges*
- *E-77413-Mainline Work*
- *F-77613-East 55<sup>th</sup> under CSX (Possible MOT help)*
- *T-PID TBD-Hard Shoulder Running*





# CCG4 INNERBELT CURVE: FUNDING PHASES

- *A-86745-Easterly Interceptor*
- *B-80408-CSX Bridge*
- *C-86744-NS Bridge*
- *D-82392-Overhead Bridges*
- *E-77413-Mainline Work*
- *F-77613-East 55<sup>th</sup> under CSX (Possible MOT help)*
- *T-PID TBD-Hard Shoulder Running*



**CCG4A (86745)  
Easterly Interceptor**

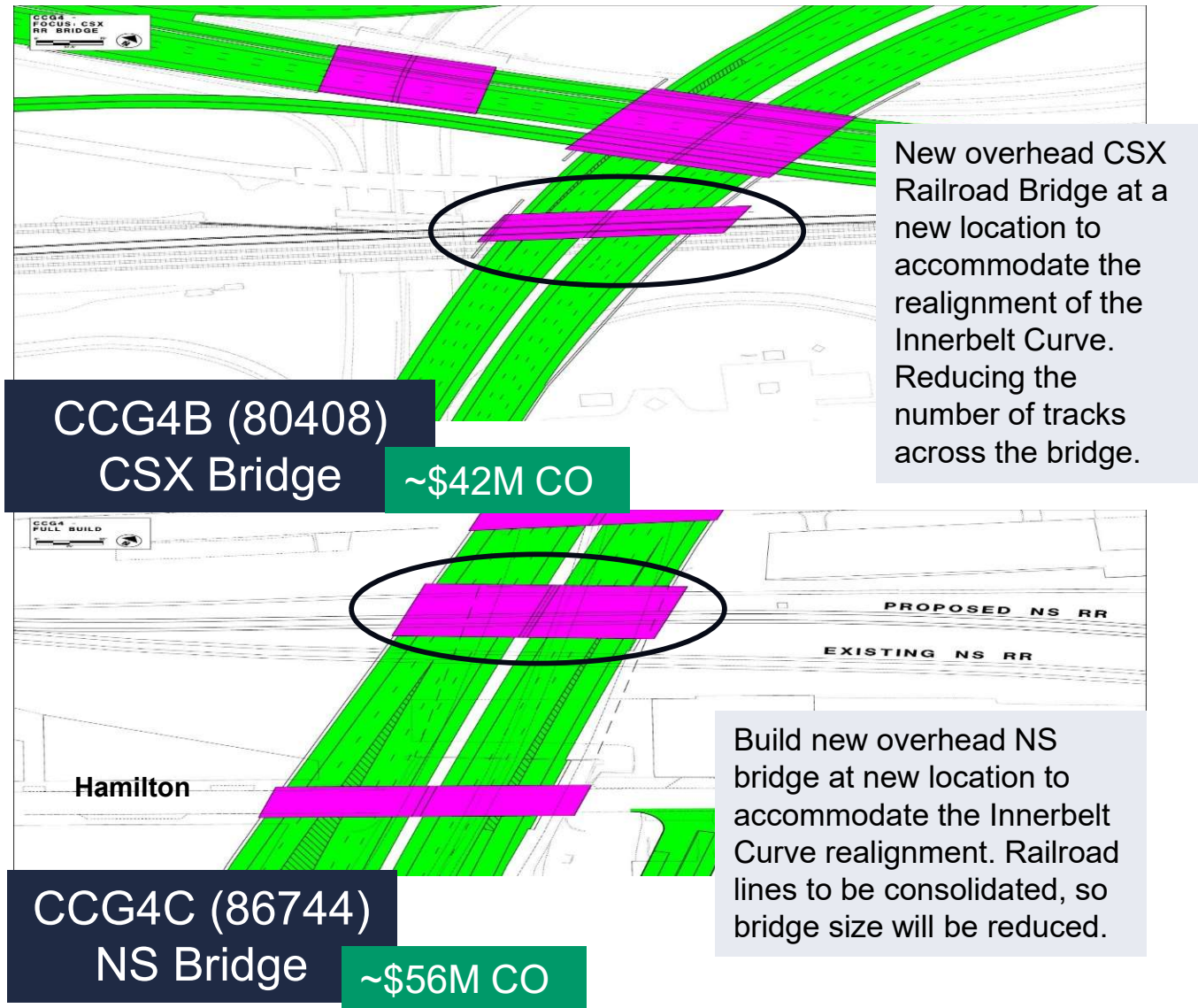
**~\$9M CO**

Relocation of the Easterly Interceptor Sewer owned by the NEORSD.



# CCG4 INNERBELT CURVE: FUNDING PHASES

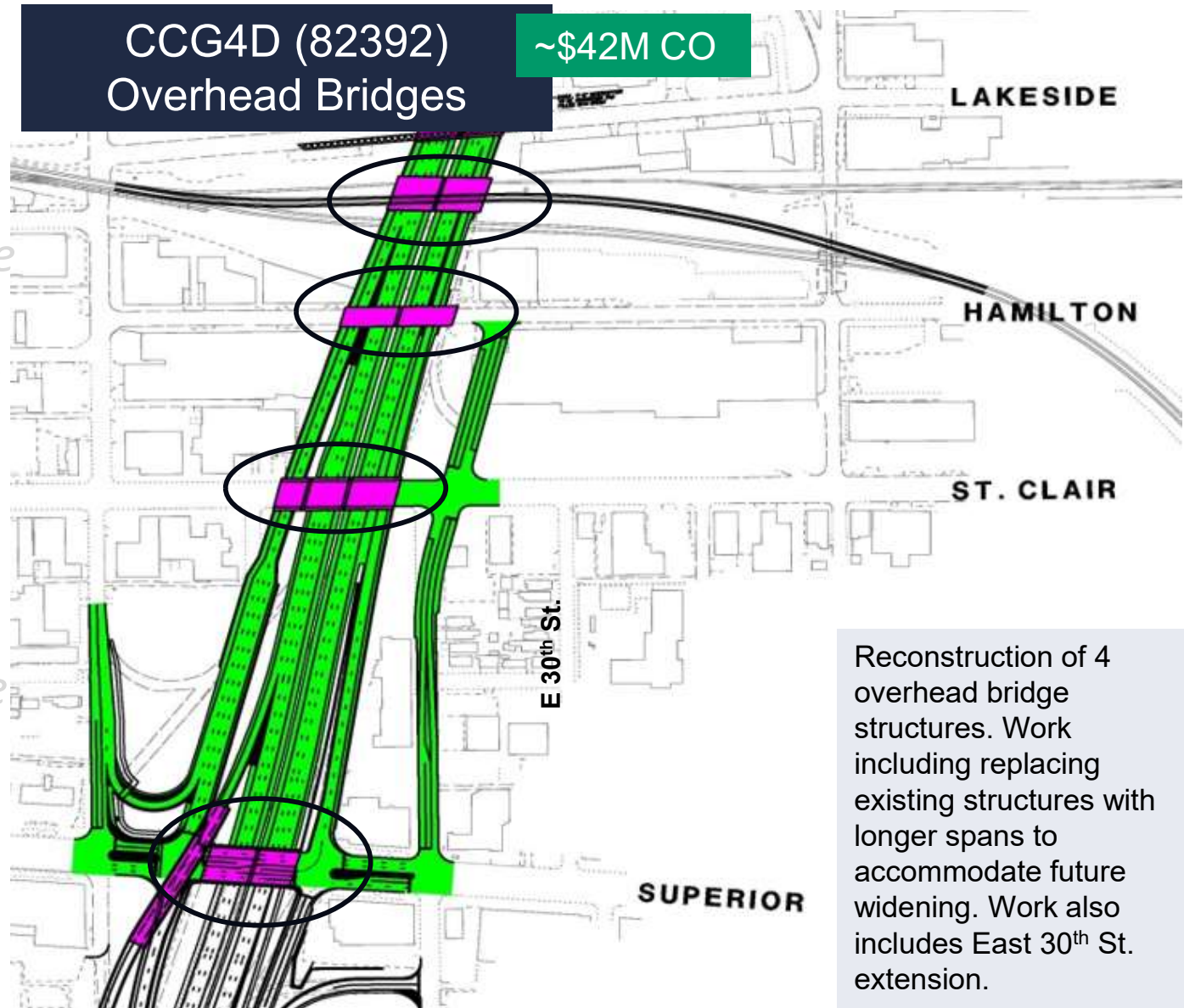
- *A-86745-Easterly Interceptor*
- *B-80408-CSX Bridge*
- *C-86744-NS Bridge*
- *D-82392-Overhead Bridges*
- *E-77413-Mainline Work*
- *F-77613-East 55<sup>th</sup> under CSX (Possible MOT help)*
- *T-PID TBD-Hard Shoulder Running*





# CCG4 INNERBELT CURVE: FUNDING PHASES

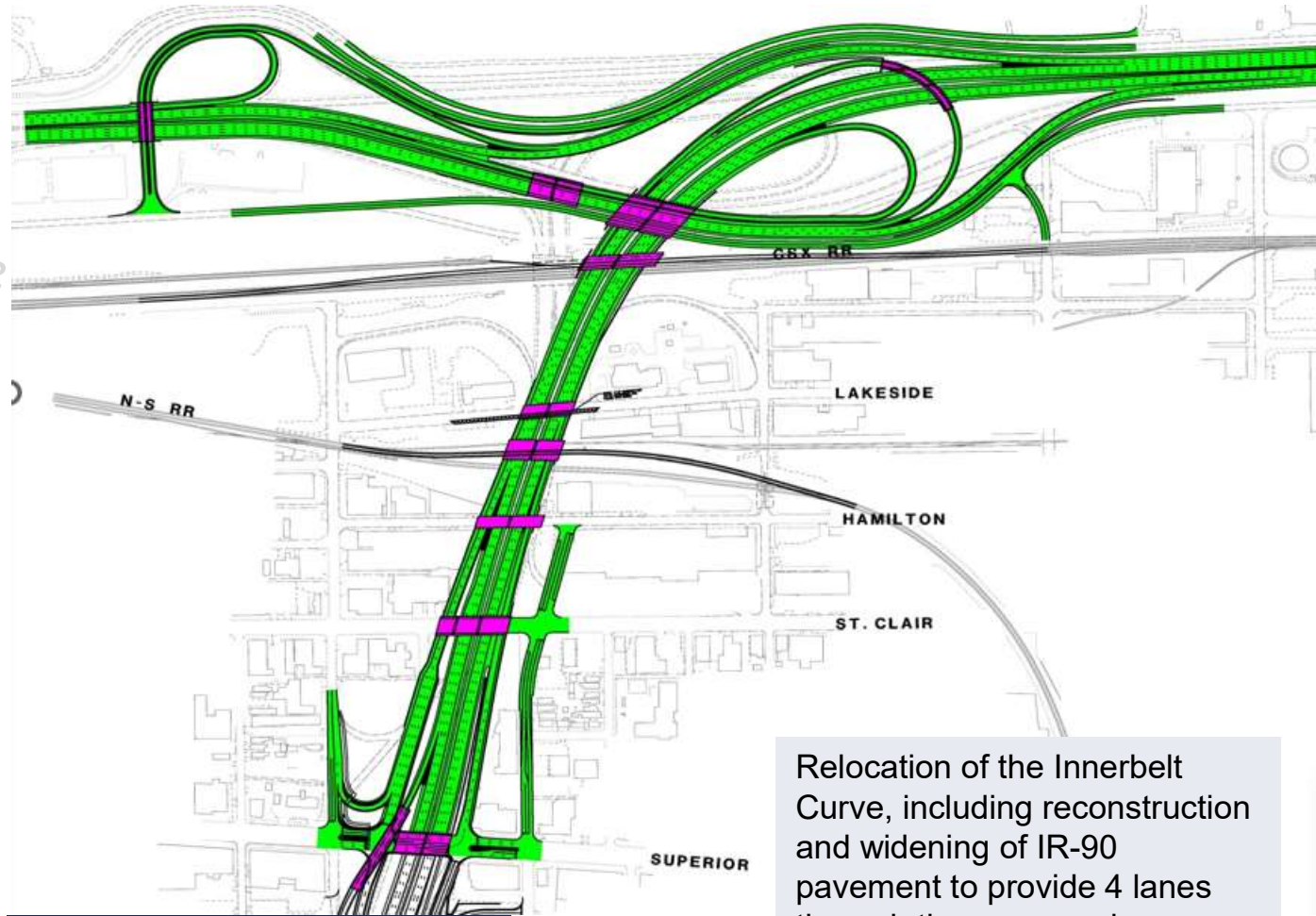
- *A-86745-Easterly Interceptor*
- *B-80408-CSX Bridge*
- *C-86744-NS Bridge*
- ***D-82392-Overhead Bridges***
- *E-77413-Mainline Work*
- *F-77613-East 55<sup>th</sup> under CSX (Possible MOT help)*
- *T-PID TBD-Hard Shoulder Running*





# CCG4 INNERBELT CURVE: FUNDING PHASES

- *A-86745-Easterly Interceptor*
- *B-80408-CSX Bridge*
- *C-86744-NS Bridge*
- *D-82392-Overhead Bridges*
- **E-77413-Mainline Work**
- *F-77613-East 55<sup>th</sup> under CSX (Possible MOT help)*
- *T-PID TBD-Hard Shoulder Running*



**CCG4E (77413)  
Mainline Work**

**~\$256M CO**

Relocation of the Innerbelt Curve, including reconstruction and widening of IR-90 pavement to provide 4 lanes through the curve and reconstructing the interchange ramps at SR 2 and Superior Ave.

# CCG4 INNERBELT CURVE: FUNDING PHASES

- *A-86745-Easterly Interceptor*
- *B-80408-CSX Bridge*
- *C-86744-NS Bridge*
- *D-82392-Overhead Bridges*
- *E-77413-Mainline Work*
- ***F-77613-East 55<sup>th</sup> under CSX (Possible MOT help)***
- *T-PID TBD-Hard Shoulder Running*



**CCG4F (77613)  
East 55<sup>th</sup> under  
CSX**

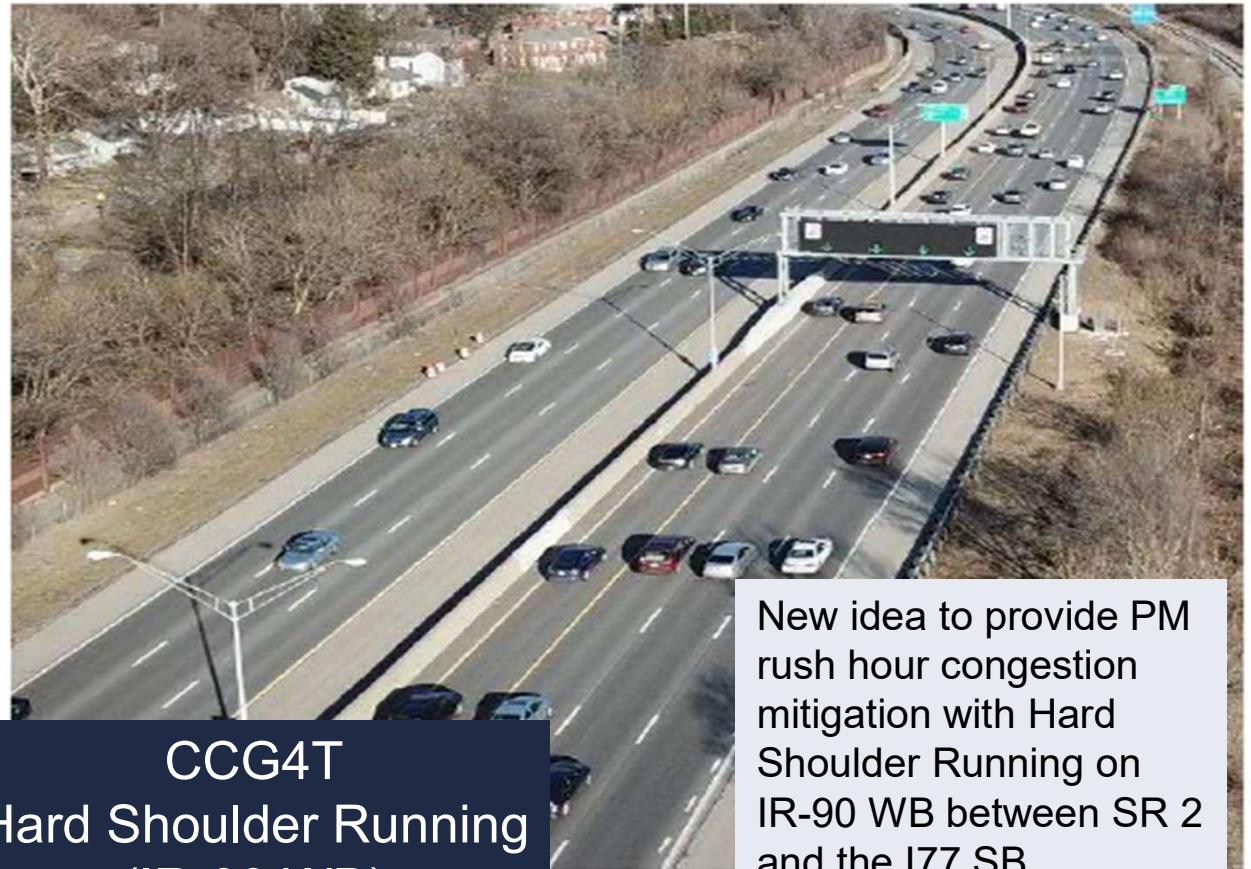
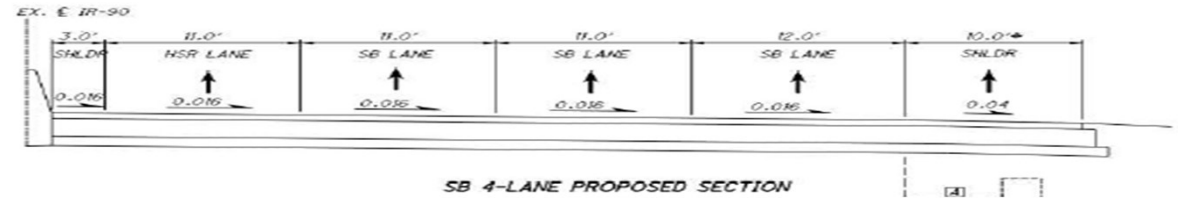
**~\$20M CO**

Replacement of the CSX Railroad Bridge over E.55<sup>th</sup> St. located just south of IR-90 to accommodate the widening of E.55<sup>th</sup> St. Advance MOT project for Innerbelt CCG4.



# CCG4 INNERBELT CURVE: FUNDING PHASES

- *A-86745-Easterly Interceptor*
- *B-80408-CSX Bridge*
- *C-86744-NS Bridge*
- *D-82392-Overhead Bridges*
- *E-77413-Mainline Work*
- *F-77613-East 55th under CSX (Possible MOT help)*
- ***T-PID TBD-Hard Shoulder Running***

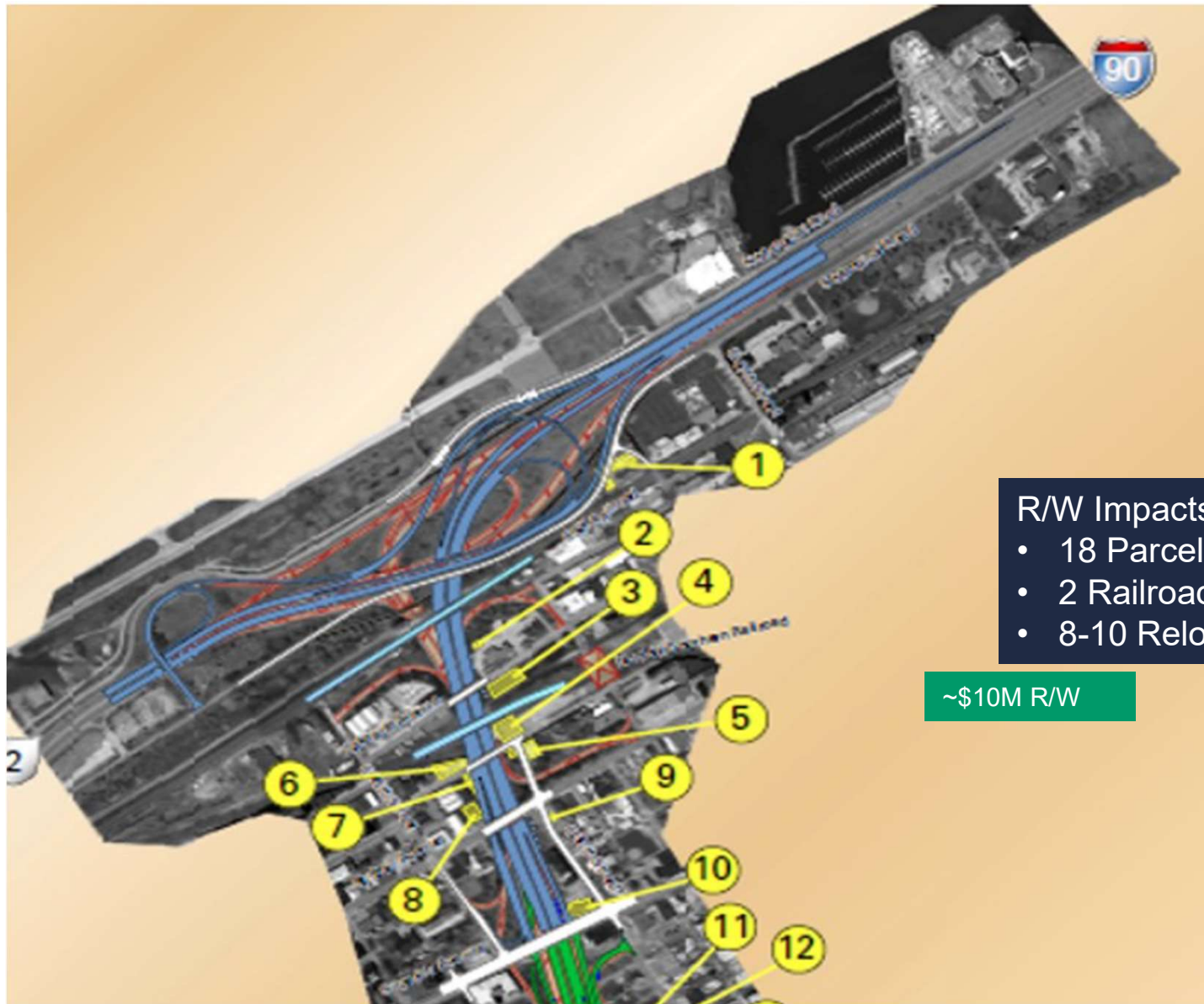


**CCG4T  
Hard Shoulder Running  
(IR-90 WB)**

**~\$19M CO**

New idea to provide PM rush hour congestion mitigation with Hard Shoulder Running on IR-90 WB between SR 2 and the I77 SB interchange.

# CCG4-INNERBELT CURVE - R/W IMPACTS

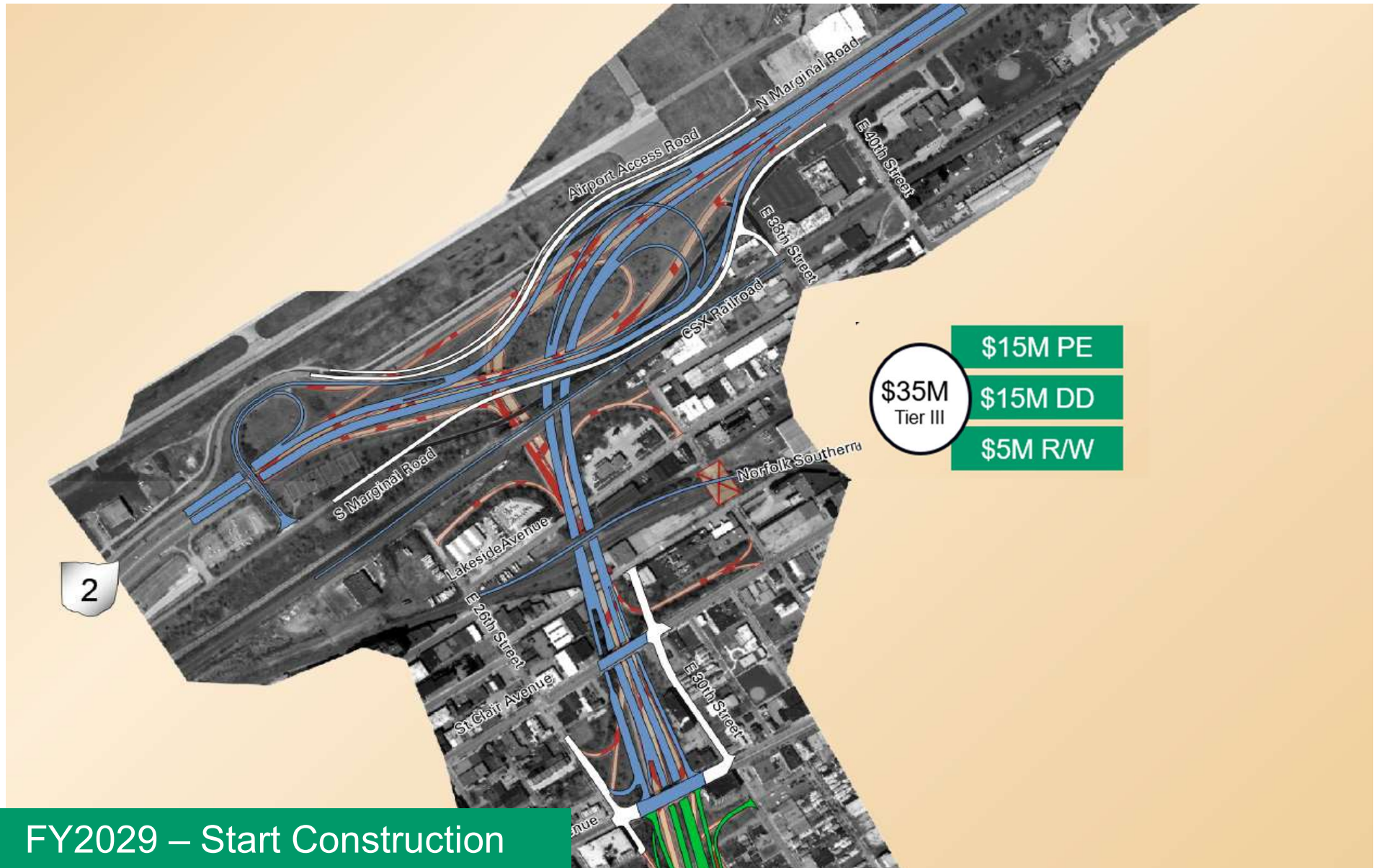


- R/W Impacts:
- 18 Parcels
  - 2 Railroads
  - 8-10 Relocations

~\$10M R/W



# CCG4 INNERBELT CURVE: APPLICATION REQUEST #2023-D12-03



FY2029 – Start Construction

Questions?