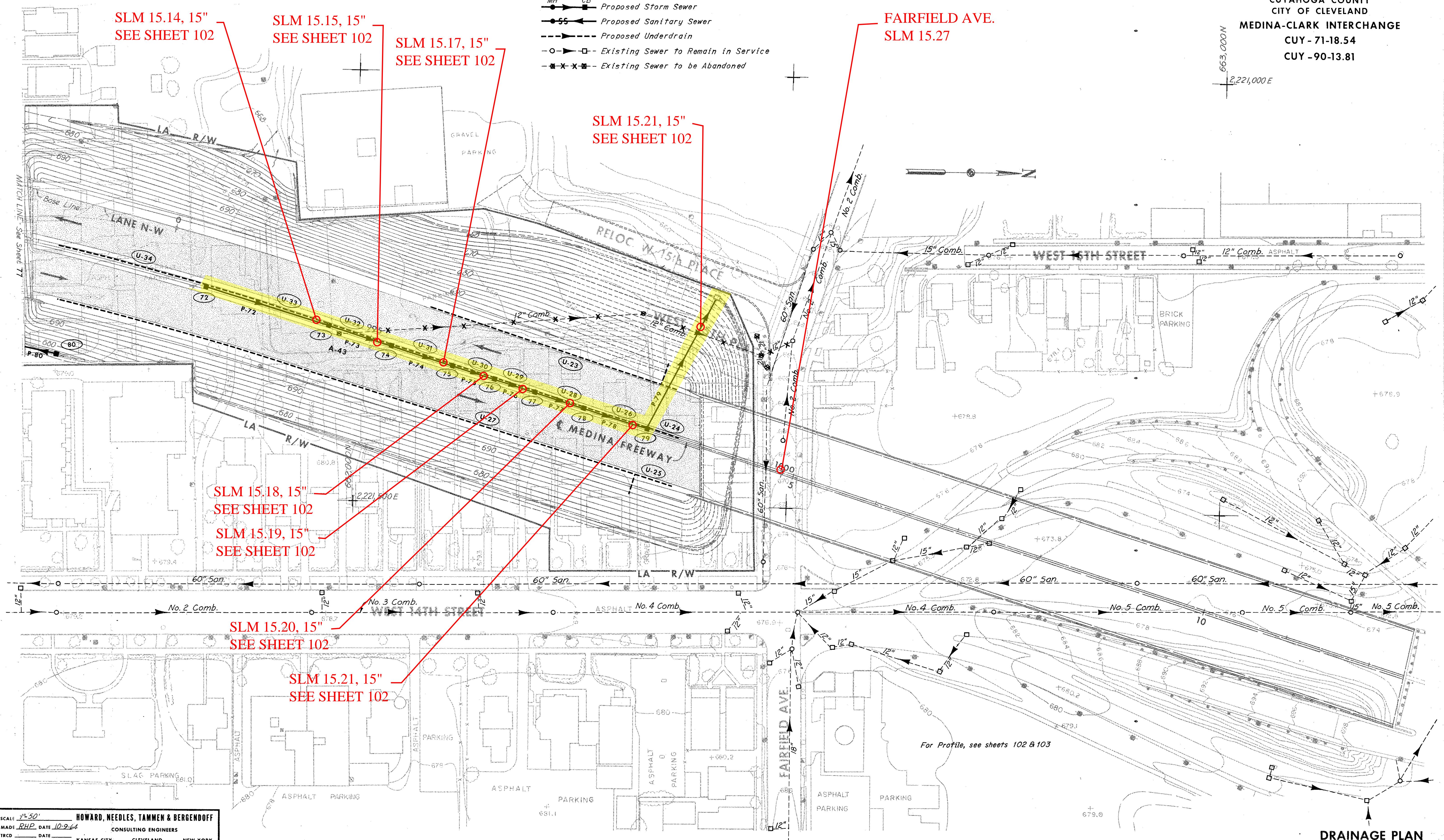


CUYAHOGA COUNTY  
CITY OF CLEVELAND  
MEDINA-CLARK INTERCHANGE  
CUY-71-18.54  
CUY-90-13.81

663,000 N  
2,221,000 E

LEGEND

- MH → CB Proposed Storm Sewer
- → Proposed Sanitary Sewer
- Proposed Underdrain
- Existing Sewer to Remain in Service
- x-x-x Existing Sewer to be Abandoned



SLM 15.14, 15"  
SEE SHEET 102

SLM 15.15, 15"  
SEE SHEET 102

SLM 15.17, 15"  
SEE SHEET 102

SLM 15.21, 15"  
SEE SHEET 102

FAIRFIELD AVE.  
SLM 15.27

SLM 15.18, 15"  
SEE SHEET 102

SLM 15.19, 15"  
SEE SHEET 102

SLM 15.20, 15"  
SEE SHEET 102

SLM 15.21, 15"  
SEE SHEET 102

For Profile, see sheets 102 & 103